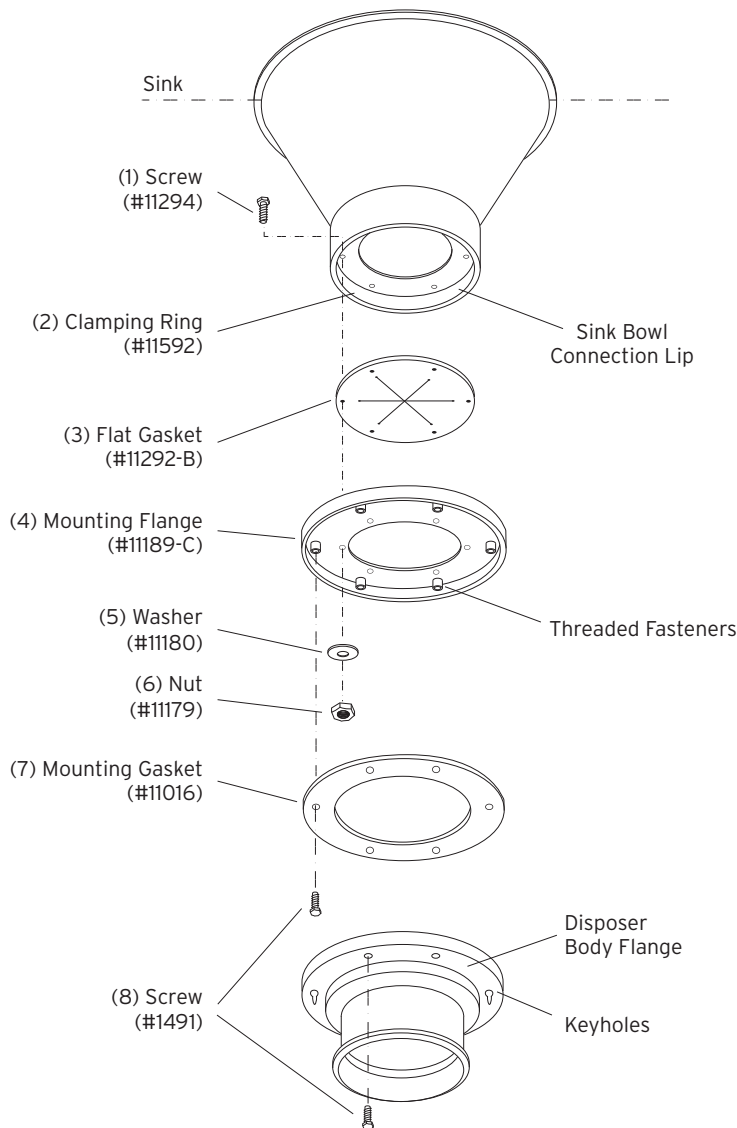


This adaptor will fit a sink opening of: 5" I.D. and 5-7/8" O.D.



## Installation Instructions

1. Place the clamping ring (2) down through the opening so that it rests on the sink bowl connection lip. If the opening has a small ridge on the inside above the lip, a slight force fit may be necessary to push the ring down to the lip.
2. Insert six screws (1) through the clamping ring (2), flat gasket (3) and mounting flange (4). With screws protruding through the mounting flange (4), attach six washers (5) and six nuts (6). Tighten all screws evenly.
3. Position the disposer for plumbing hookup and check the location of the keyhole slots in the disposer body flange.
4. Attach two screws (8) through opposite holes in the mounting gasket (7) and into the threaded fasteners in the mounting flange (4). The screws (8) should be protruding approximately 1/4 inch below the mounting gasket (7).
5. Position the disposer beneath the mounting gasket (7) and engage the two protruding screws in the keyhole slots in the disposer body flange. Assemble the remaining four screws (8). Tighten all screws evenly to secure the unit.