



44660/44668 PROGRAMMABLE THERMOSTAT INSTALLATION

This easy installation guide will walk you through the proper installation of your Hunter® thermostat. For questions or assistance you may contact our technical department at 1-888-830-1326 (CAN 1-866-268-1936) . Hours of operation are 7 a.m. to 7 p.m. Monday thru Friday and 8 a.m. to 5 p.m. on Saturday.

This thermostat is compatible with most oil, gas, electric, 2 wire hot water systems or single stage heats pumps. This thermostat will not control multi-stage heat pumps, line voltage, or 3 wire hot water systems.

CAUTIONS / WARNINGS

- Do not** disconnect the wires from your old thermostat until all wires have been properly labeled. **You must label all wiring accordingly**, wire color may not indicate the function of the wire.
- Most thermostats are low voltage, and present no threat to you during the uninstallation or installation process. As a precaution though, turn off the power to your Furnace by using the switch on the side or your breaker box.
- This thermostat is designed for use with 24 volt AC/ millivolt systems with a maximum of 1 amp.** Higher amp or line voltage systems will cause damage to your system and increase the risk of fire.

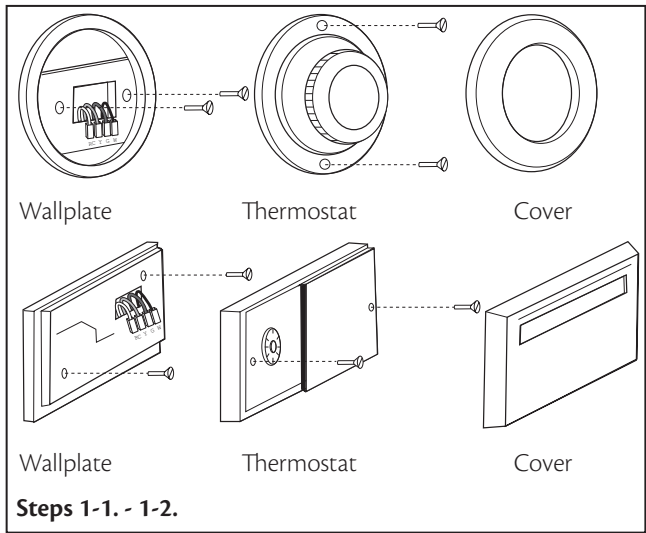
TOOLS

- Gather all tools necessary to complete your installation before removing the old thermostat.
- To install your thermostat you should have the following tools:
- Slotted Screwdriver
 - Phillips Screw Driver
 - Electric Drill and 3/16" drill bit
 - Hammer
 - Four 1.5v (AA) size alkaline batteries
- Unpack your new Hunter® thermostat and ensure all components are present in the Accessory Pack. This includes:
- 2 - #8 slotted screws
 - 2 - wall anchors for mounting
 - 1 - sheet of terminal labels
 - 1 - jumper wire
 - 1 - thermostat with mounting plate.

REMOVING THE OLD THERMOSTAT

- Turn off power to your furnace.
- Remove the existing cover. Some thermostats may have screws or other locking devices that must first be removed. Once the wallplate is exposed, locate the wire terminals. If the wire terminals are not visible, they may be connected to the back of the wallplate. Look for any additional screws, tabs, or locking devices to remove the wallplate.

Warning: Do not remove any wires from the existing thermostat until you have labeled all wires with the included terminal stickers.



LABELING WIRES

- Using the chart below, label the wires one at a time from your old thermostat with the included terminal stickers and remove them from the thermostat.
- To ensure wires do not fall back into the wall hole, you may tape them to the wall, or wrap them around a pencil.

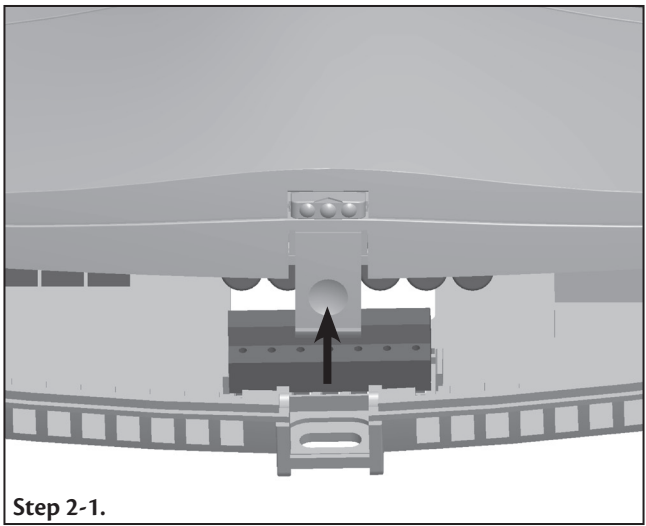
- *Often, 2 wire heat only systems do not have terminal labels. Connect 1 wire to the RH terminal and the other to W.
- *If both "O" and "B" are present, "B" may be a common wire. Contact our technical support department for wiring assistance.

OLD THERMOSTAT	→	NEW THERMOSTAT
W, W/b	→	W/B
Y, Y/O, Y1	→	Y/O
G, F	→	G
RH, R1	→	RH
RC, R	→	RC
O	→	O
Not Used	⊘	C

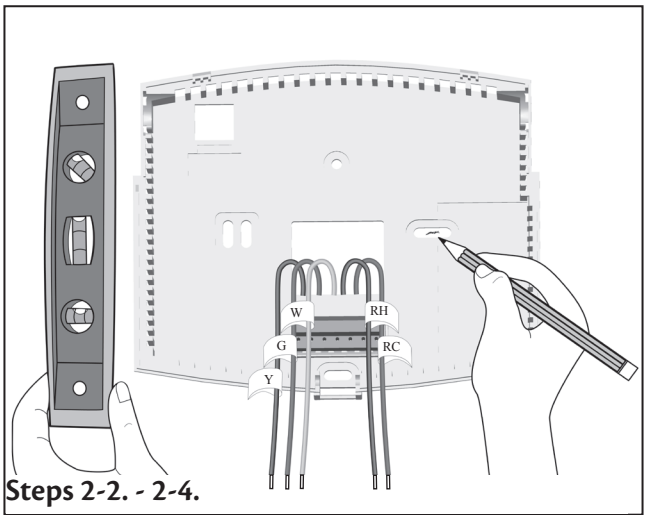
- Warning:** Many 2 wire heat only systems are line voltage. To determine this, check the size of the wire. If the wire is much larger than the jumper wire included with this thermostat do not connect to the thermostat.
- Note:** If you have any addition wires that do not match with the wiring diagrams in this manual, contact our technical support department for assistance.
- Warning:** Never connect a "common wire" to this thermostat, sometimes referred to as "C" or "B". Doing so could cause damage to the thermostat or your heating/cooling system. Contact our technical support department for wiring assistance.

INSTALLING THE MOUNTING PLATE

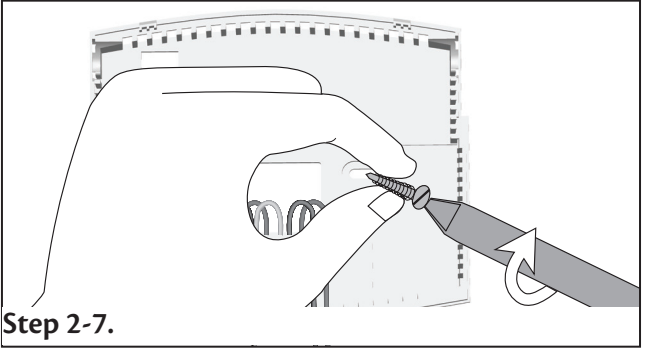
- Separate the wallplate from the thermostat by gripping the thermostat firmly on the top and bottom with one hand. With the other hand, press the release tab on the bottom of the thermostat. Pull firmly to release the two parts from each other.



- Position the wallplate on the wall and pull the wires through the opening on the mounting plate.
- Level the mounting plate for appearance.
- Mark holes for plastic anchors provided by using a pencil to place a mark on the wall if your existing holes do not line up with those on the Hunter wallplate.

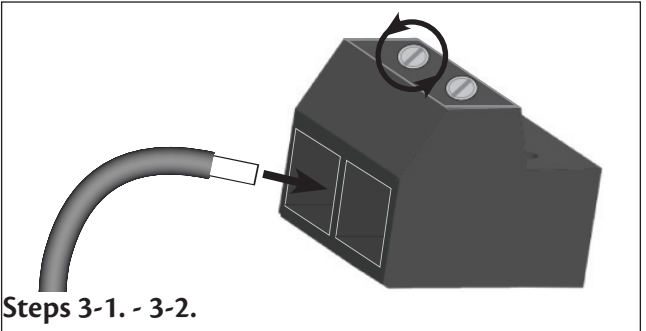


- Remove the wall plate and drill two 3/16" holes where marked.
- Note:** Do not let the terminal stickers come loose while removing the wallplate.
- Tap the plastic anchors into the holes with a hammer until they are flush with the wall.
- Reposition the wall plate on the wall, pulling the wires through the opening. Insert the mounting screws through the wall plate and into the anchors. Verify that the wall plate is visually level and securely tighten both screws.



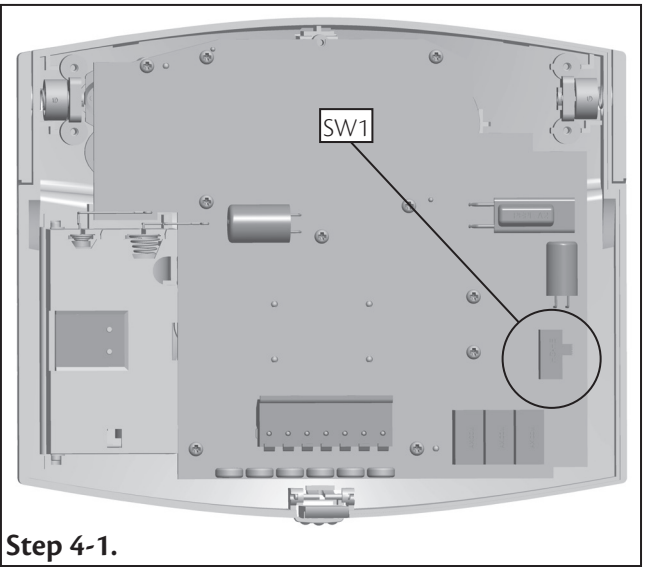
WIRE INSTALLATION

- A jumper wire has been included on the mounting plate between the RH and RC1 terminals. This jumper should remain between these 2 terminals unless RH and RC each have their own wire. Consult the diagram for "5 Wire Heat / Cool" on the back of this page.
- Loosen but do not remove the screws on the terminal block.
 - NOTE:** Ensure the ends of the wires have enough exposed wire to insert into the terminal block.
 - Insert each wire into the appropriate terminal and tighten the screw.
 - Note.** Consult the wiring charts under "Wiring Diagrams" on the backside of this sheet to ensure proper wiring.
 - Gently pull each wire to ensure they are properly secured.



FINISHING INSTALLATION

- Locate the SW1 switch on the back of the thermostat. If you have a gas/oil heating system, move this switch to the HG (Heating Gas) position, electric based systems should be set to HE (Heating Electric), and single stage heat pumps (SSHP) should be set to SSHP.



- Once all the wiring and settings have been made on the backplate and backside of the thermostat, place the top of the thermostat at an angle over the two tabs on the wall plate. Press the thermostat onto the wall plate and press to snap the bottom tab into place.
- Note:** Do not force the thermostat onto the wall plate, as the terminal pins may be damaged. If the thermostat does not snap into place properly, the unit may not work.
- Insert two AA alkaline batteries.
- Restore power at the electrical panel or furnace.

TECHNICAL SUPPORT

You may contact our Consumer Services department at 1-888-830-1326 (CAN 1-866-268-1936) or over the Internet at www.hunterfan.com/customer-care-center.aspx/ for support or manuals. Hours of operation are 7 a.m. to 7 p.m. Monday thru Friday and 8 a.m. to 5 p.m. on Saturday.

