

4-Light Adapter Light Kit

Owner's Guide and Installation Manual
Manual De Propietario



English

Español

Form# 43548-01
20090430
©2009 Hunter Fan Co.

SINCE 1886
Hunter[®]

Welcome

Your new Hunter® light kit is an addition to your home or office that will provide comfort and performance for many years. This installation and operation manual gives you complete instructions for installing and operating your light kit.

We are proud of our work. We appreciate the opportunity to supply you with the best products available anywhere in the world.

Before installing your light kit, for your records and warranty assistance, record information from the carton and Hunter nameplate label.

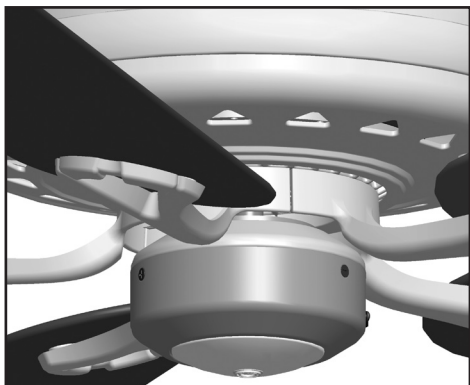
Cautions and Warnings

- **READ THIS ENTIRE MANUAL CAREFULLY BEFORE BEGINNING INSTALLATION. SAVE THESE INSTRUCTIONS.**
- Use only Hunter replacement parts.
- To reduce the risk of personal injury, install this light fixture only on Hunter® fan types A through Z. **Note:** The fan type can be found on the ceiling fan package or on the nameplate label located on top of the motor housing of the ceiling fan.
- To avoid possible electrical shock, before installing light fixtures, disconnect the power by turning off the circuit breakers both to the outlet box and to its associated wall switch location. If you cannot lock the circuit breakers in the off position, securely fasten a prominent warning device, such as a tag, to the service panel.
- Connect house wiring to the fan before attaching the light fixture to the fan.
- All wiring must be in accordance with national and local electrical codes and ANSI/NFPA 70. If you are unfamiliar with wiring, use a qualified electrician.

Table Of Contents

Installing the Light Kit on Fans With Removable Switch Housing.....	4
Installing the Light Kit on Fans With Non-Removable Switch Housing... ..	6
Installing the Light Kit on the Hunter Original	8
Troubleshooting.....	9

Installation Methods for Hunter® Ceiling Fans



Your *Hunter*® light kit can be installed on the Hunter Fan Corte D'Azur, Custom Home, 42" Dominion, 52" Dominion, Marseille, and Santa Barbara models.

Preparing the Light Kit

1. Shades are not included with this light kit. Be sure to purchase shades for your light kit before installing this light kit.
2. Disconnect power by turning off the circuit breakers both to the outlet box and to its associated wall switch location.

Installing the Light Kit on Fans With Removable Switch Housings

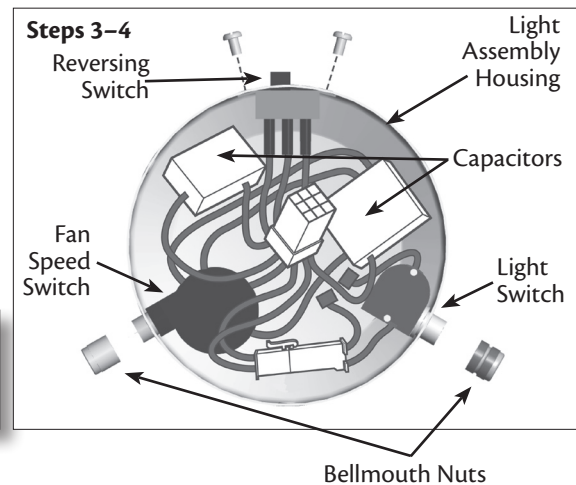
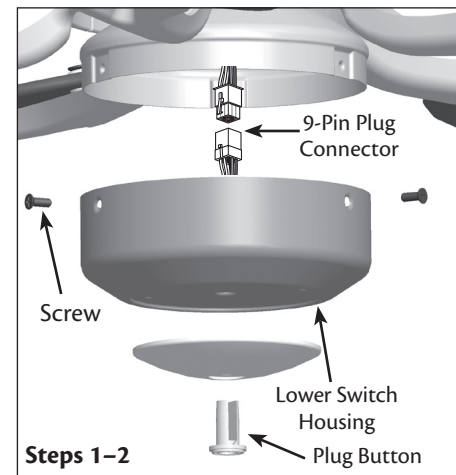
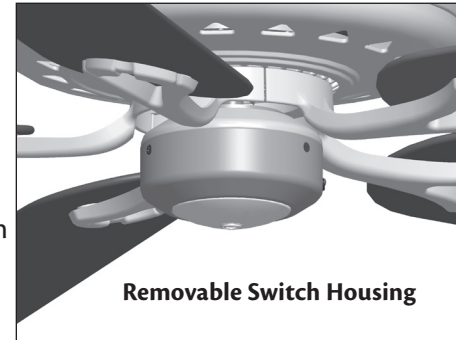
Before installing the light fixture, remove the wiring harness and its components from the fan's lower switch housing. Then install the wiring harness into the light fixture.

1. Unscrew the three screws from the upper switch housing. Disconnect the 9-pin plug connectors. Remove the lower switch housing.
2. Push the plug button from inside the lower switch housing to remove the plug button and switch housing cap. Unscrew the two attachment screws on the bottom of the switch housing.

NOTE: Save the plug button and switch housing cap should you choose to remove the light fixture in the future.

3. Locate the reversing switch and carefully remove the two screws holding the reversing switch to the lower switch housing. Then, remove the reversing switch from the housing.
4. Remove the patented breakaway connector from the end of the fan pull chain. Carefully loosen the bellmouth nut from the pull chain and remove the pull chain switch from the light fixture housing.
5. Locate and carefully remove the two capacitors from the lower switch housing.

You have now disconnected the wiring harness and its components from the lower switch housing.



WARNING: Improper installation could cause the light fixture to fall.

Installing the Light Kit

6. Insert the pull chain and fan pull chain switch through the round opening on the side of the empty switch housing. Thread the bellmouth nut over the pull chain and hand tighten the bellmouth nut.
7. Reattach the breakaway connector to the pull chain.
8. Insert the reversing switch into the square hole on the side of the switch housing. Install and tighten the two screws you removed previously from the other switch housing.
9. Carefully place the capacitors in the switch housing.

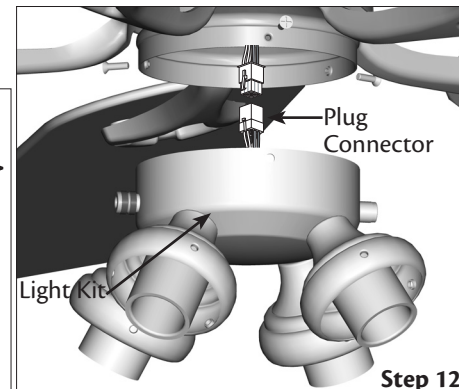
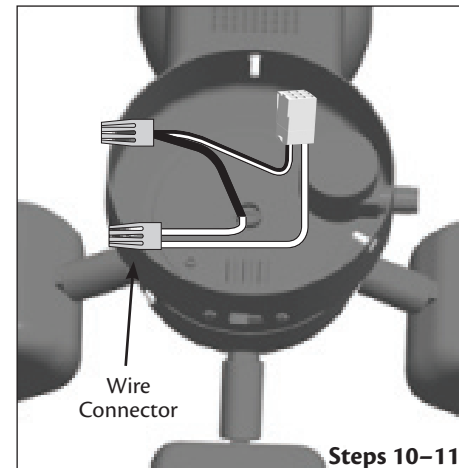
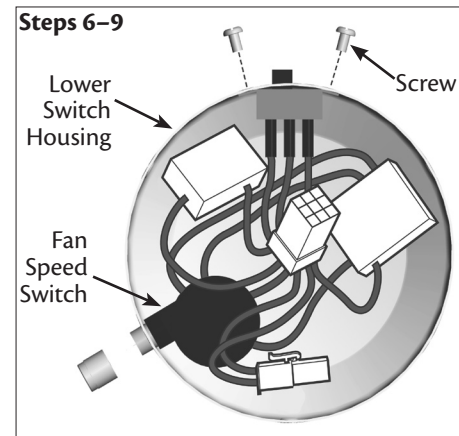
You have now installed the wiring harness and its components in the light kit.

10. Locate the two wires in the wiring harness (removed from the lower switch housing) labeled "Connect Light Here" or "For Light use." One is white; the other is white with a black stripe. Unscrew the connectors to expose the bare metal leads.
11. Locate the white wire and the black wire coming from the light fixture. Connect the black wire from the light fixture to the black/white wire from the wiring harness. Connect the white wire from the light fixture to the white wire from the wiring harness.
To connect the wires, hold the bare metal leads together and place a wire nut over them, then twist the wire nut clockwise until tight.

⚠ CAUTION: Be sure no bare metal wires or wire strands are visible after making the connections.

12. Reconnect the 9-pin plug connector.
13. Install screws to reattach the light kit to the upper switch housing.

Plug
Connector
Detail



Troubleshooting

Troubleshooting

Light does not come on

1. Make sure bulbs are installed properly.
2. Make sure breakers or fuses are on.
3. Verify that the light power lead is connected at the ceiling. Refer to your ceiling fan manual for locating assembly and wiring.

Glass rattles

1. Make sure the glass shades are secure.

If you need parts or service assistance, please call 888-830-1326 or visit us at our Web site at <http://www.hunterfan.com>.

Hunter Fan Company
7130 Goodlett Farms Pkwy. # 400
Memphis, Tennessee 38016

This Light Fixture Weighs 2 lbs.

Printed in China