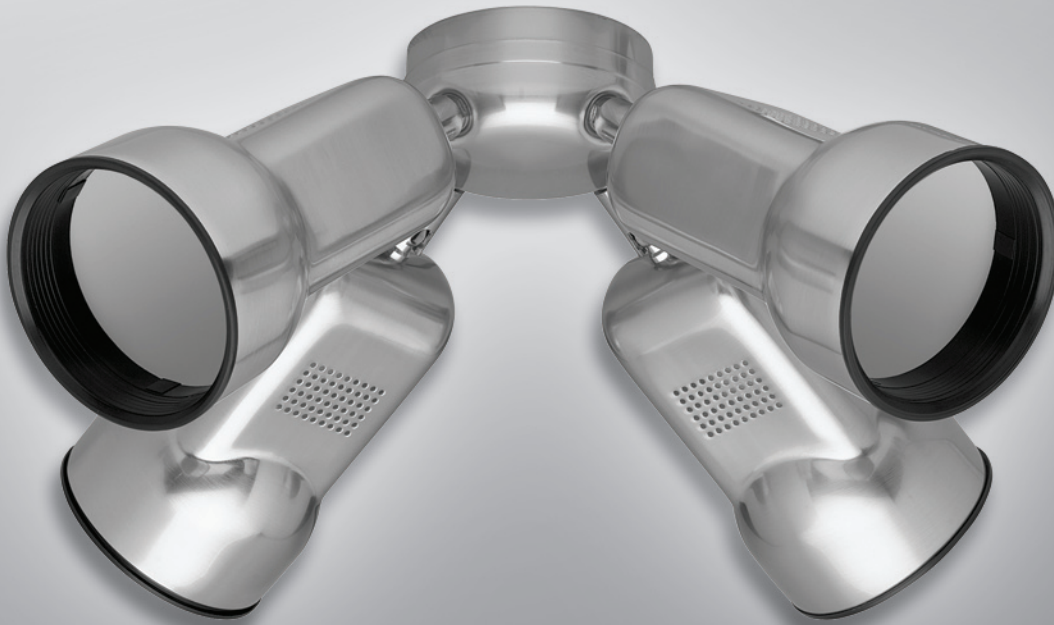


Bullet Spotlight Kit

Owner's Guide and Installation Manual
Manual De Propietario



English

Español

Form# 43551-01
20090420
©2009 Hunter Fan Co.

Hunter
SINCE 1886

Welcome

Your new Hunter® light kit is an addition to your home or office that will provide comfort and performance for many years. This installation and operation manual gives you complete instructions for installing and operating your light kit.

We are proud of our work. We appreciate the opportunity to supply you with the best products available anywhere in the world.

Before installing your light kit, for your records and warranty assistance, record information from the carton and Hunter nameplate label.

Cautions and Warnings

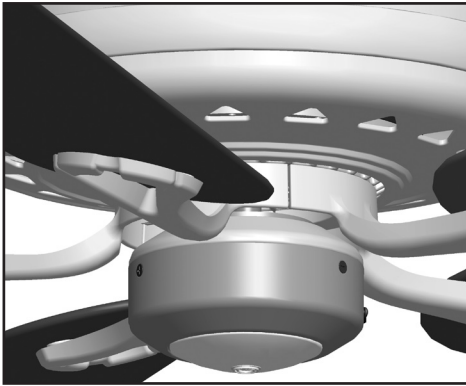
- **READ THIS ENTIRE MANUAL CAREFULLY BEFORE BEGINNING INSTALLATION. SAVE THESE INSTRUCTIONS.**

- Use only Hunter replacement parts.
- To reduce the risk of personal injury, install this light fixture only on Hunter® fan types A through Z. **Note:** The fan type can be found on the ceiling fan package or on the nameplate label located on top of the motor housing of the ceiling fan.
- To avoid possible electrical shock, before installing light fixtures, disconnect the power by turning off the circuit breakers both to the outlet box and to its associated wall switch location. If you cannot lock the circuit breakers in the off position, securely fasten a prominent warning device, such as a tag, to the service panel.
- Connect house wiring to the fan before attaching the light fixture to the fan.
- All wiring must be in accordance with national and local electrical codes and ANSI/NFPA 70. If you are unfamiliar with wiring, use a qualified electrician.

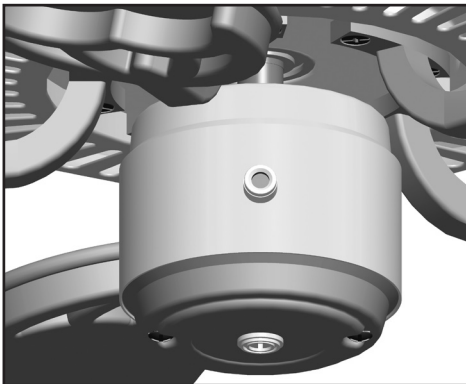
Table Of Contents

Installing the Light Kit on Fans With Removable Switch Housing.....	4
Installing the Light Kit on Fans With Non-Removable Switch Housing...	6
Installing the Light Kit on the Hunter Original	8
Troubleshooting.....	9

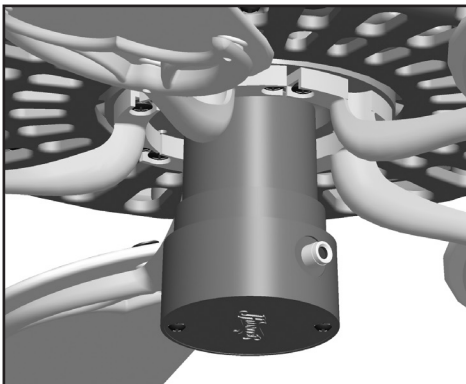
Installation Methods of Hunter® Ceiling Fans Type A-Z



Removable Switch Housing



Non-removable Switch Housing

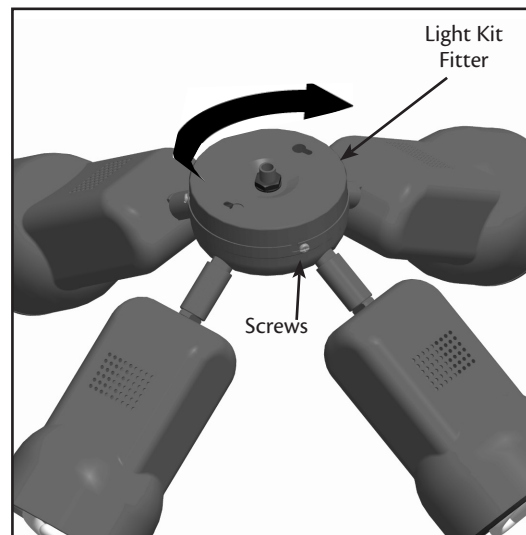


The Hunter Original

Your *Hunter*® light kit can be installed in one of three ways, depending on the type of switch housing. The steps in this manual include instructions for all three installation methods: Fans with removable switch housings, fans with non-removable switch housings, and Hunter Originals.

Preparing the Light Kit.

1. Disconnect power by turning off the circuit breakers both to the outlet box and to its associated wall switch location.
2. Loosen or remove the three screws on the top of the light kit fitter. Twist the fitter clockwise and loosen it from the light kit.



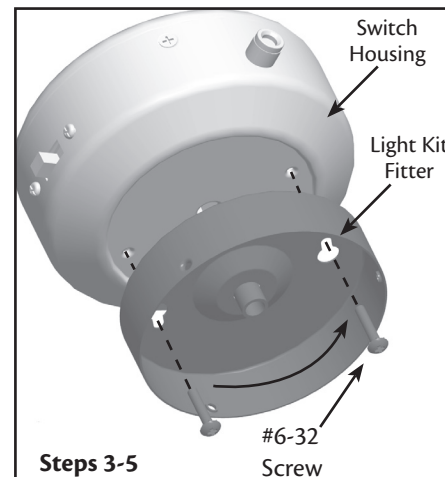
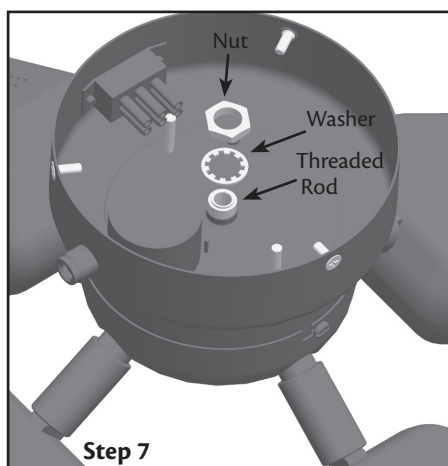
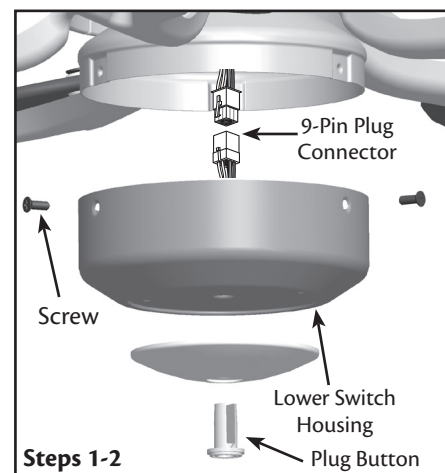
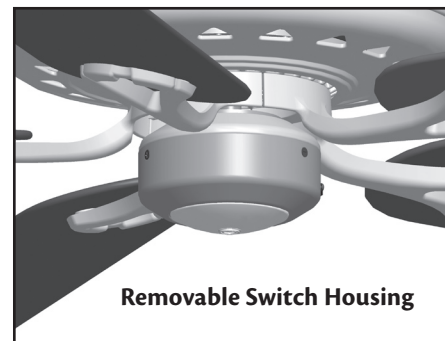
Installing the Light Kit on Fans With Removable Switch Housings

1. Unscrew the three screws from the upper switch housing. Disconnect the 9-pin plug connectors. Remove the lower switch housing.
2. Push the plug button from inside the lower switch housing to remove the plug button and switch housing cap.

NOTE: Save the plug button and switch housing cap should you choose to remove the light fixture in the future.

3. To attach the light kit fitter, partially install two #6-32 screws and the lock washers on the red tag into the switch housing.
4. Align the keyhole slots in the light kit fitter with the #6-32 screws.
5. Turn the housing counterclockwise until the housing assembly screws are firmly situated in the narrow end of the keyhole slots. Tighten screws firmly.
6. Feed the two wires from the light fixture through the center hole in the lower switch housing.
7. To secure the light kit fitter, thread the nut and washer onto the rod from the light kit. Tighten the nut and washer you previously threaded onto the rod from the light kit.

WARNING: Improper installation could cause the light fixture to fall.



Installing the Light Kit on Fans With Removable Switch Housings (Continued)

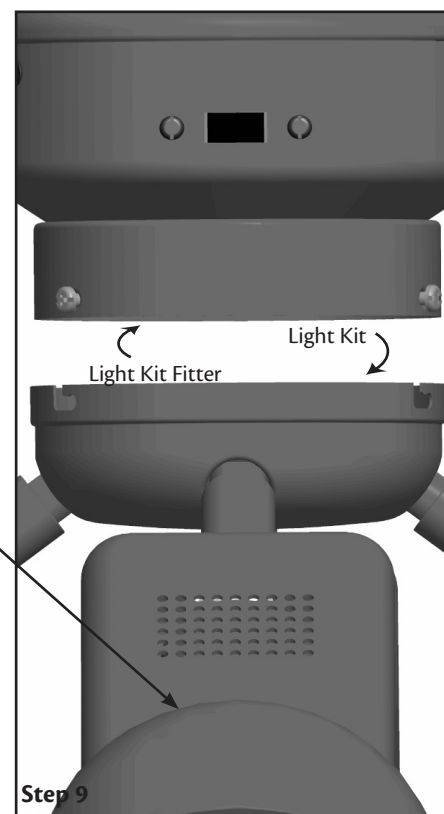
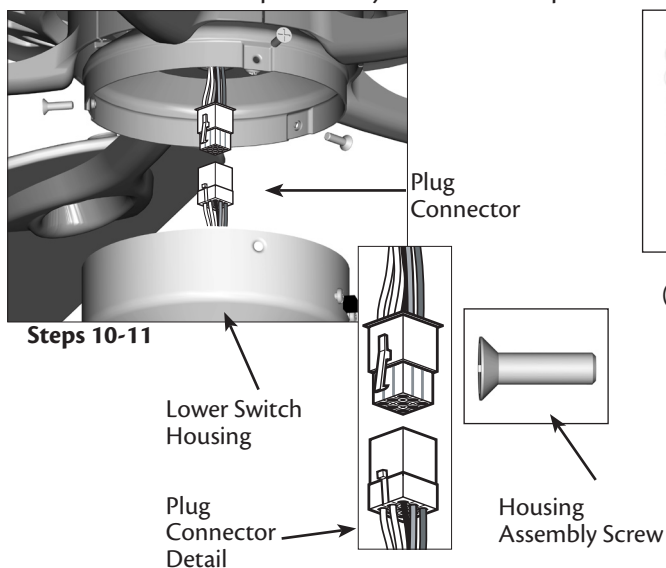
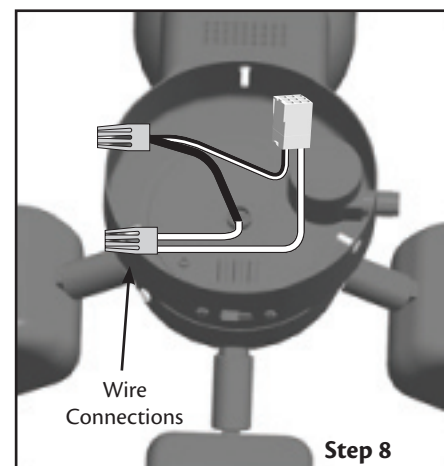
8. Remove the wire connectors from the two wires in the switch housing labeled "Connect Light Here" or "For Light Use."

To connect the wires, hold the bare metal leads together and place a wire connector over them, then twist the wire connector clockwise until tight.

Connect the black wire with a white stripe from the switch housing to the black wire from the light kit. Connect the white wire from the switch housing to the white wire from the light kit. Secure all wire connections using wire connectors.

⚠ CAUTION: Be sure no bare metal wires or wire strands are visible after making the connections.

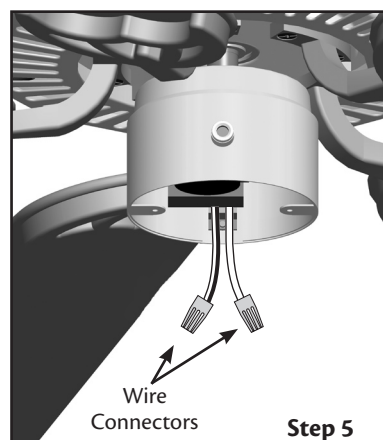
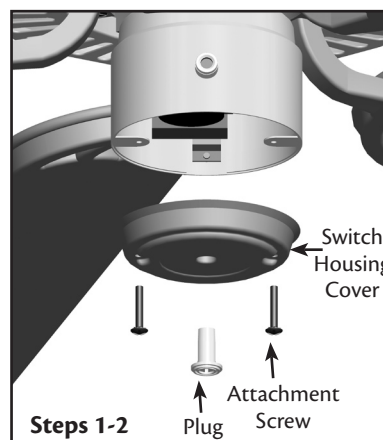
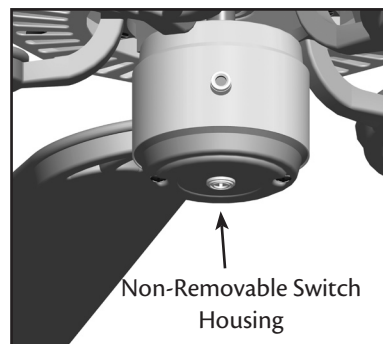
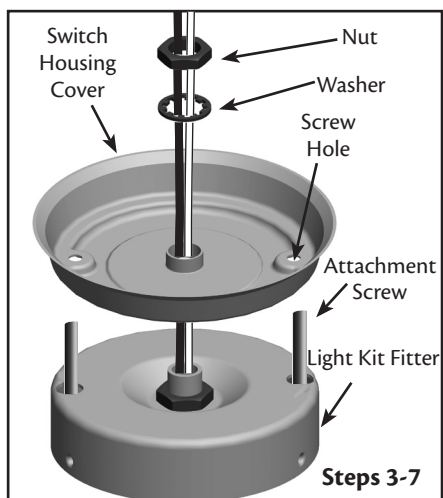
9. Finish attaching the light kit to the lower switch housing. Align the notches in the sides of the light kit with the screws on the fitter. Twist the light kit counterclockwise to lock the screws in place. Tighten the screws securely.
10. Reconnect the 9-pin plug connector.
11. Reinstall screws to reattach the lower switch housing to the upper switch housing.
12. Install the included CFL bulbs.
13. The installation is complete and you can restore power to the ceiling fan



Installing the Light Kit on Fans With Non-Removable Switch Housing

1. Uninstall the two attachment screws from the switch housing cover.
2. Remove the plug or screw from the center of the switch housing cover.
NOTE: Save the plug button and switch housing cap should you choose to remove the light fixture in the future.
3. Thread the switch housing cover onto the light kit fitter. Align the screw holes in the light kit fitter with the screw holes in the switch housing cover.
4. Install the nut and washer onto the threaded rod from the light kit fitter to secure the switch housing cover.
5. Remove the wire connectors from the two wires in the switch housing labeled "Connect Light Here" or "For Light Use." One wire is white and the other wire is black with a white stripe.
6. Feed the two wires from the switch housing through the threaded rod in the light kit fitter.
7. Use the two attachment screws removed from the lower switch housing and the lock washers on the red tag of the light kit fitter. Install the screws into the light kit and the housing. Securely tighten the two screws.

⚠ WARNING: Improper installation could cause the light fixture to fall, or result in electrical shock or personal injury.

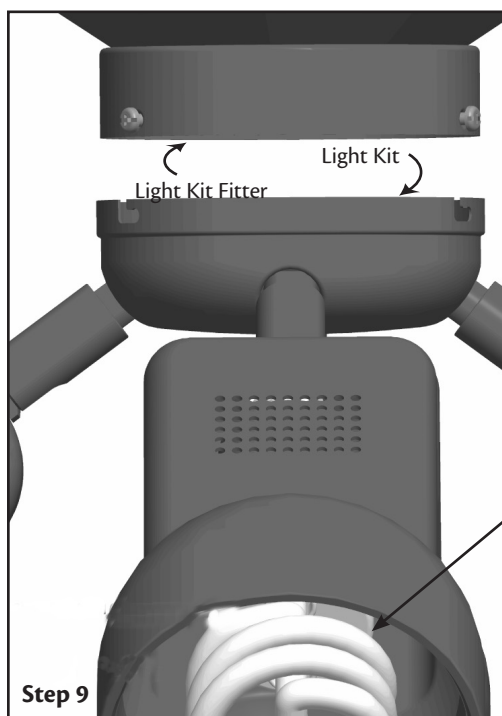
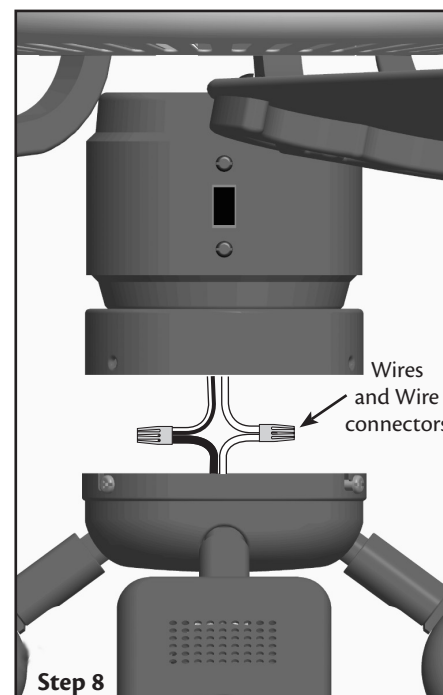


Installing the Light Kit on Fans With Non-Removable Switch Housing Cont.

- To connect the wires, hold the bare metal leads together and place a wire connector over them, then twist the wire connector clockwise until tight. Connect the black wire with a white stripe from the switch housing to the black wire from the light kit. Connect the white wire from the switch housing to the white wire from the light kit. Secure all wire connections using wire connectors.

⚠ CAUTION: Be sure no bare metal wires or wire strands are visible after making the connections.

- Finish attaching the light kit to the lower switch housing. Align the notches in the sides of the light kit with the screws on the fitter. Finish attaching the light kit to the lower switch housing. Align the notches in the sides of the light kit with the screws on the fitter. Twist the fitter counterclockwise to lock the screws in place. Tighten the screws securely.
- Install the included CFL bulbs.
- The installation is complete and you can restore power to the ceiling fan.



Installing the Light Kit on the Hunter Original

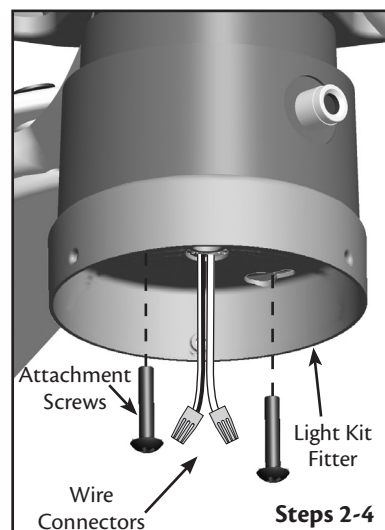
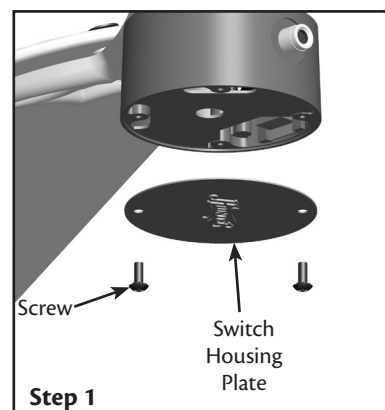
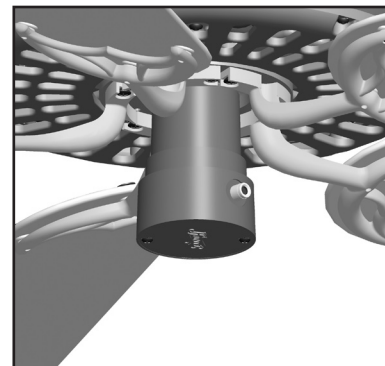
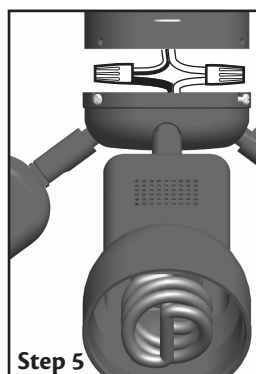
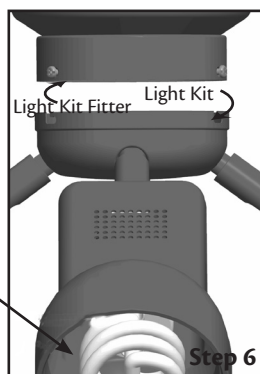
1. Uninstall the two attachment screws from the switch housing cover.
NOTE: Save the switch housing cover should you choose to remove the light fixture in the future.
2. Remove the wire connectors from the two wires in the switch housing labeled "Connect Light Here" or "For Light Use." One wire is white and the other wire is black with a white stripe.
3. Feed the two wires from the switch housing through the threaded rod in the light kit fitter.
4. Use the two attachment screws removed from the lower switch housing and the lock washers on the red tag of the light kit fitter. Partially install the screws in the switch housing. Install the screws into the light kit and the housing. Rotate the housing counterclockwise until the screws are locked into the narrow ends of the keyhole slots. Securely tighten the two screws.
5. To connect the wires, hold the bare metal leads together and place a wire connector over them, then twist the wire connector clockwise until tight. Connect the black wire with a white stripe from the switch housing to the black wire from the light kit. Connect the white wire from the switch housing to the white wire from the light kit. Secure all wire connections using wire connectors.

⚠ CAUTION: Be sure no bare metal wires or wire strands are visible after making the connections.

6. Finish attaching the light kit to the lower switch housing. Align the notches in the sides of the light kit with the screws on the fitter. Twist the fitter counterclockwise to lock the screws in place. Tighten the screws securely.
7. Install the included CFL bulbs.
8. The installation is complete and you can restore power to the ceiling fan.



CFL
(included)



Troubleshooting

Troubleshooting

Light does not come on.

1. Make sure bulbs are installed properly.
2. Make sure breakers or fuses are on.
3. Verify that the light power lead is connected at the ceiling. Refer to your ceiling fan manual for locating assembly and wiring.

If you need parts or service assistance, please call
888-830-1326 or visit us at our Web site at
<http://www.hunterfan.com>.

Hunter Fan Company
7130 Goodlett Farms Pkwy. # 400
Memphis, Tennessee 38016

This Light Fixture Weighs 4 lbs.

Printed in China