

# ASSEMBLY INSTRUCTION








ITEM: 5961-75200-02 Rectangle Dining Table w/ 2\*22 leaves  
5961-75200-89 Rectangle Dining Table w/ 2\*22 leaves

Thank you for purchasing this quality product. Be sure to unpack carefully looking for small parts which may have come loose during shipment.

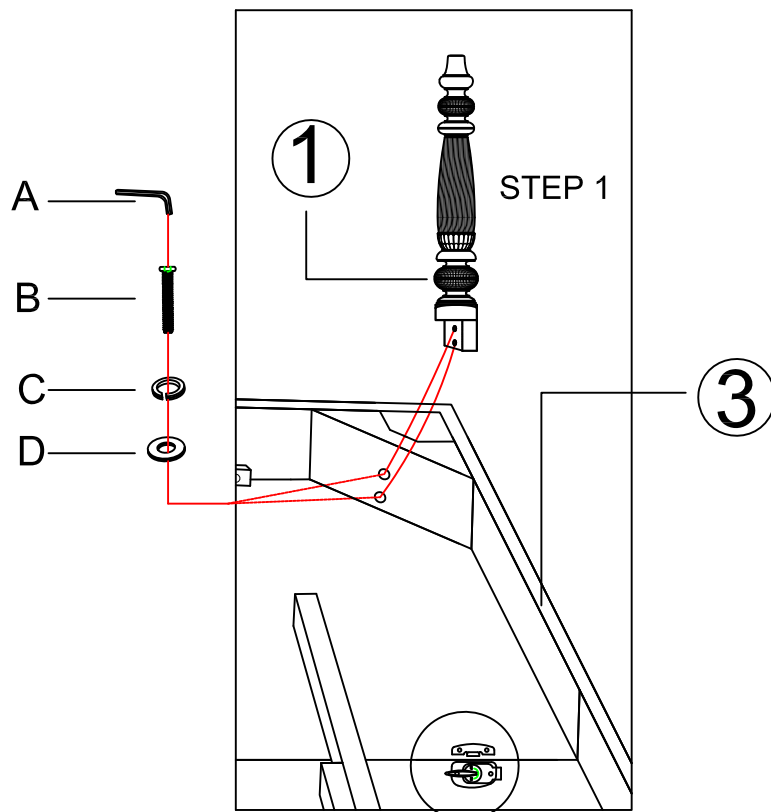
Read all instruction and study the drawing carefully before starting the assembly process.

**HARDWARE PACK**

**PART LIST**

| NO. | DRAWING   | DESCRIPTION  | SIZE      | Q'TY | NO. | DRAWING  | DESCRIPTION | Q'TY |
|-----|---|--------------|-----------|------|-----|--|-------------|------|
| A   |  | Allen Wrench | 73*29*5mm | 1PC  | ①   |  | Leg         | 4PCS |
| B   |  | Bolt         | 5/16"     | 8PCS | ②   |  | Leaf        | 2PCS |
| C   |  | Lock Washer  | 5/16"     | 8PCS | ③   |  | Top         | 1PC  |
| D   |  | Flat Washer  | 5/16"     | 8PCS |     |  |             |      |

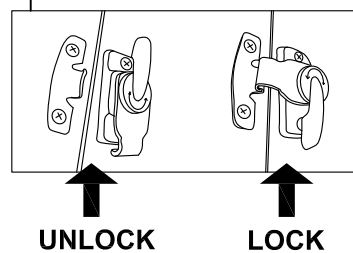
**Diagram 1**



**Note: Please follow numbers on legs and corner blocks during assembly.**

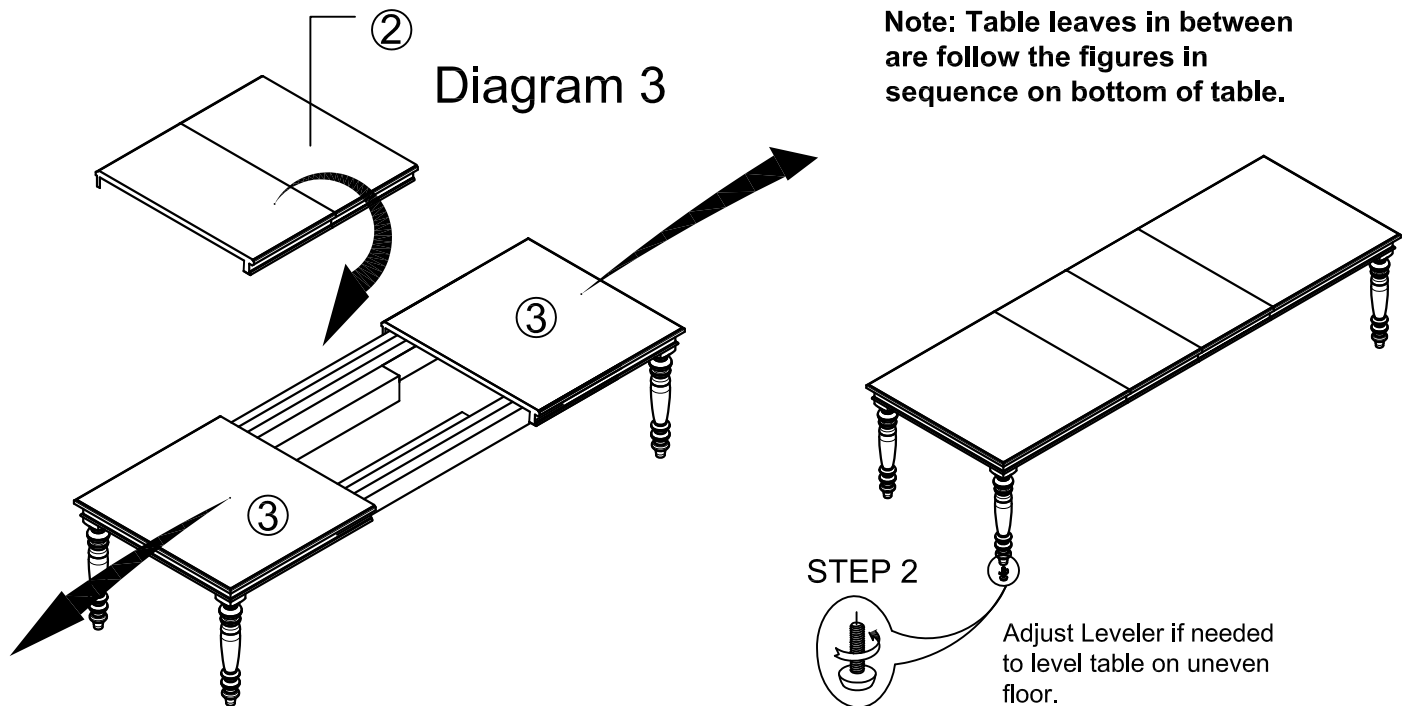
Step 1:

Attach legs (1) to top (3).



**Diagram 2**

Thank you for purchasing this quality product. Be sure to unpack carefully looking for small parts which may have come loose during shipment.  
Read all instruction and study the drawing carefully before starting the assembly process.



### Instruction for table leaves:

1. There are latches at the bottom of table top, unlock the latches as shown in Diagram 2 above.
2. Pull out table top as the arrow direction shown in Diagram 3.
3. Place table leaves (2) between table tops and push table tops together.
4. Lock the latches. (See Diagram 2)
5. Take opposite actions to remove table leaves.