


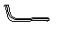


ASSEMBLY INSTRUCTION

Item#: 5603-75900-LTBR Buffet

* Please make sure you have all parts indicated below prior to assembly.
This unit is heavy and can best be assembled with the help of two or more persons.

NO	HARDWARE LIST		Q'TY
A		Flat Washer	8
B		Lock Washer	8
C		Bolt	8
D		Allen Wrench	1

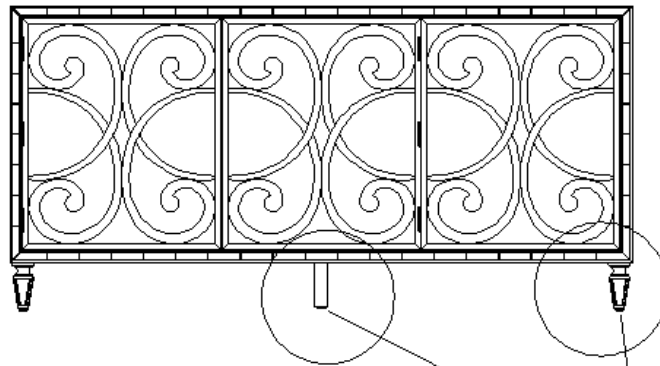
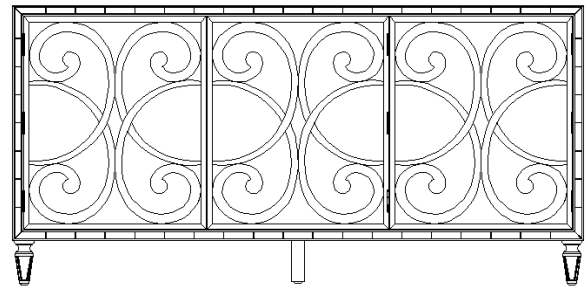


Diagram 1

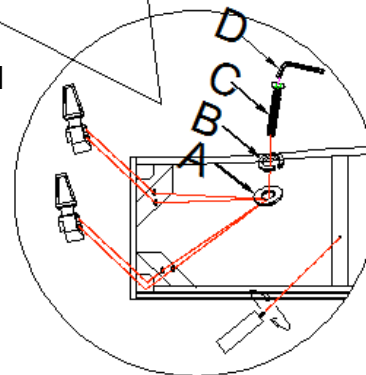


Diagram 2

Assembly Steps:

1. Place buffet upside down on a soft surface to prevent it from being scratched.
2. Follow numbers on legs and corner blocks. Attach legs to dresser by using flat washers (A), lock washers (B) and bolts (C), tighten all with allen wrench (D) in a clockwise direction. (See diagram 1)
3. Then screw center leg into the hole in a clockwise direction tightly. (See diagram 2)
4. Turn buffet upright.

Cleaning Instruction: Clean finished parts with a damp cloth using a mild dishwashing liquid and water solution. Polish the finish with soft cloth and an industry recognized furniture polish.