





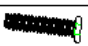
ASSEMBLY INSTRUCTION

Item#: 5070-75001 Round Dining Table Base(C)

Item#: 5070-75002 Round Dining Table Top(C)

Item#: 5070-75012 Round Urn Table Top

*** Please make sure you have all parts indicated below prior to assembly.
This unit is heavy and can best be assembled with the help of two or more people.

NO.	HARDWARE LIST		Q'TY
A		ALLEN WRENCH	1
B		$\frac{5}{16}$ "*35MM BOLT	4
C		$\frac{5}{16}$ " LOCK WASHER	8
D		$\frac{5}{16}$ " FLAT WAHSER	8
E		$\frac{5}{16}$ "*40MM BOLT	4

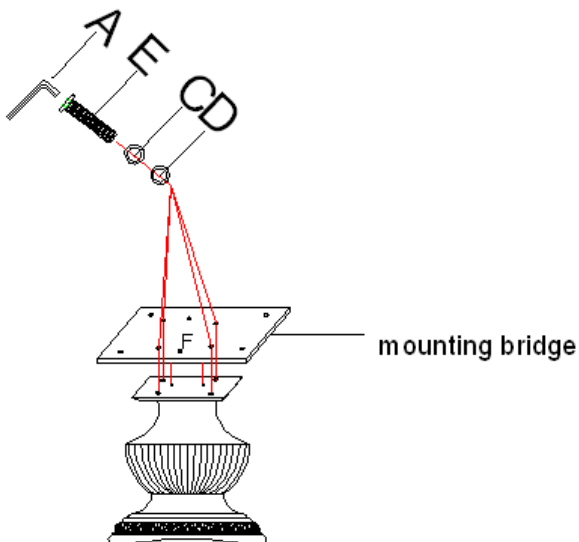


DIAGRAM 1

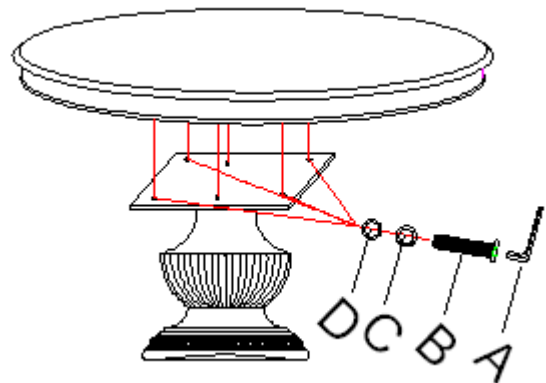


DIAGRAM 2

Assembly steps:

1. Place the base upright, use 4 bolts (E), 4 lock washers (C) and 4 flat washers(D) to attach the mounting bridge to the base, and tighten all bolts securely with allen wrench (A) (See diagram 1).
2. Put the top on the base, align the holes on the top with the dowels (F) on the mounting bridge, use 4 bolts (B), 4 lock washers (C) and 4 flat washers(D), and tighten all bolts securely with allen wrench (A) (See diagram 2).

*Cleaning Instruction: Clean finished parts with a mild dishwashing liquid and water solution on a damp cloth.
Polish the finish with soft cloth and an industry recognized furniture polish.*