

ASSEMBLY INSTRUCTION

Item#: 366-75-218 ROUND TOP LEAF PED TABLE W/2-10" LEAVES

** Please make sure you have all parts indicated below prior to assembly.

NO.	HARDWARE LIST		Q'TY
A		FLAT WASHER	8
B		LOCK WASHER	8
C		55mm BOLT	2
D		ALLEN WRENCH	1
E		35mm BOLT	6

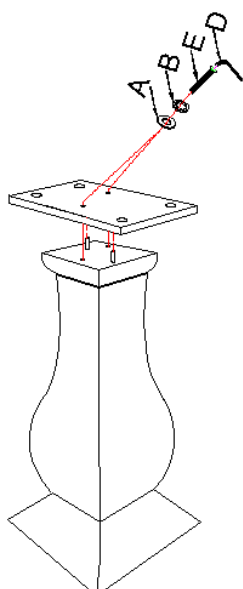
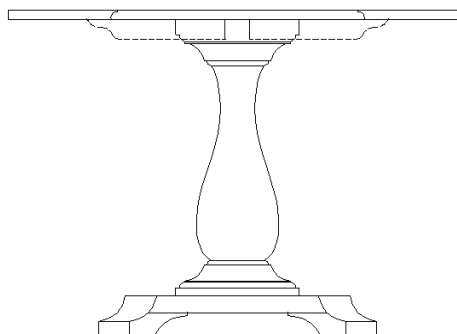


Diagram 1

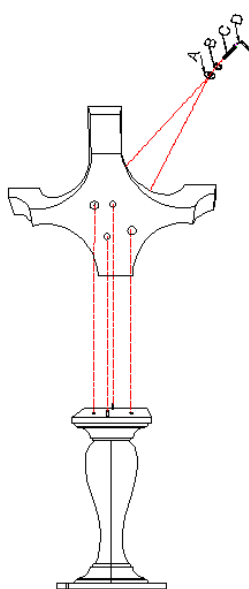


Diagram 2

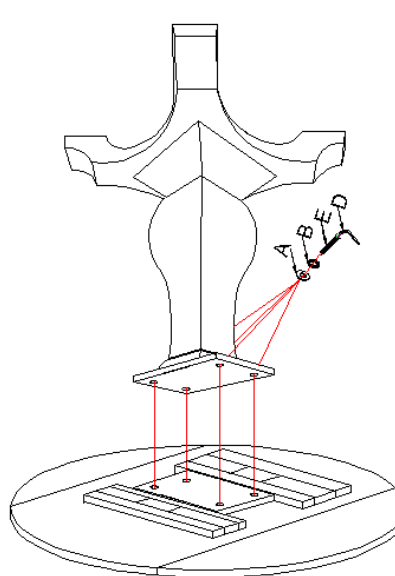


Diagram 3

Assembly Steps:

1. Align locator dowels at the table post top to the holes in the mending bridge panel, attach them using 2 bolts(E), 2 lock washers(B), 2 flat washers(A), by turning with allen wrench(D) in a clockwise direction. (see diagram 1).
2. Align locator dowels at the bottom of table post to holes in base, attach them using 2 bolts(E), 2 lock washers(B), 2 flat washers(A), by turning with allen wrench(D) in a clockwise direction. (see diagram 2).
3. Put table top upside down on a soft surface to prevent from scratching top, attach the assembled base to top using 4 bolts(E), 4 lock washers(B), 4 flat washers(A), by turning with allen wrench(D) in a clockwise direction. (see diagram 3).
4. Turn table upright, lift up the drop down leaf on each side and pull out the support lid under it for supporting.

Caution: Do not over tighten.

Cleaning Instruction: Clean finished parts with a damp cloth using a mild dishwashing liquid and water solution. Polish the finish with soft cloth and an industry recognized furniture polish.