

CALDER

1511BZ

CALDER LED TWINKLE LIGHT

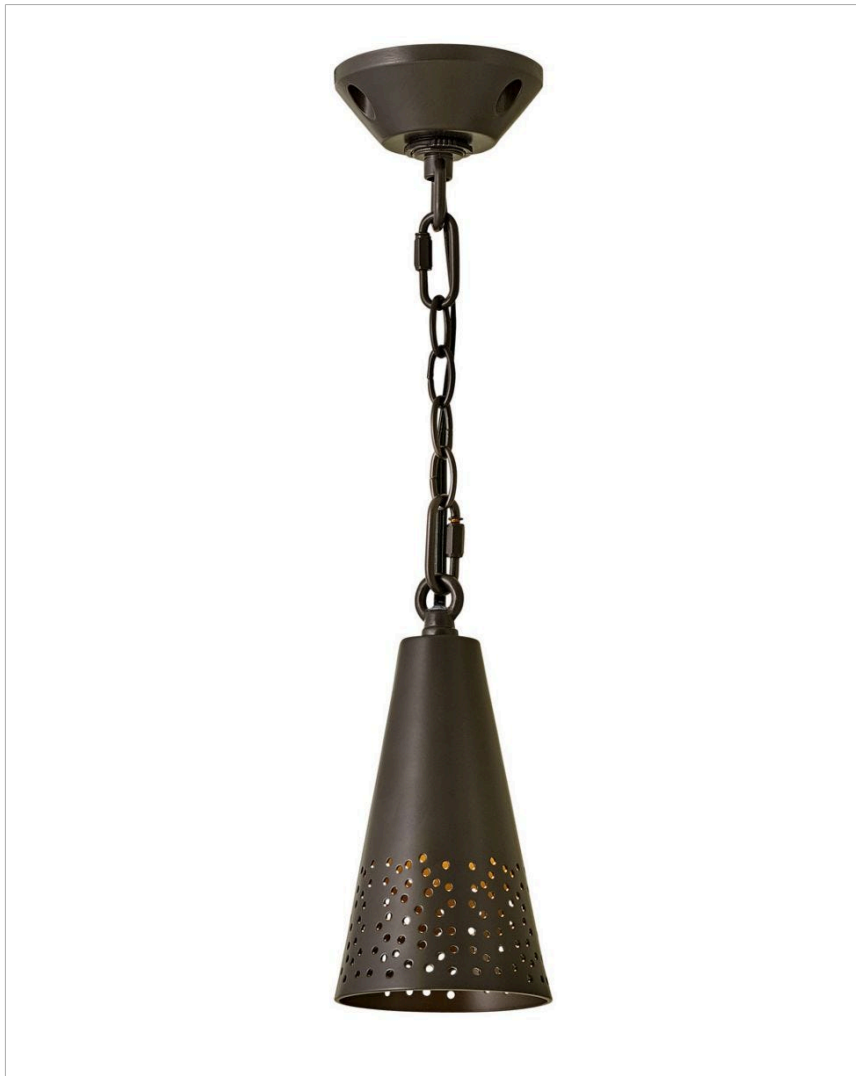
DETAILS	
FINISH:	Bronze
MATERIAL:	Cast Aluminum

DIMENSIONS	
WIDTH:	3.5"
HEIGHT:	7"
DEPTH:	3.5"
WEIGHT:	1.3 lbs.
TOP TO OUTLET:	0"

LIGHT SOURCE	
LIGHT SOURCE:	LED Lamp
LED NAME:	00T5-27LED-1.5
WATTAGE:	1-1.50w T5 LED *Included
VOLTAGE:	12v
COLOR TEMP:	2700
LUMENS:	150
CRI:	90
INCANDESCENT EQUIVALENCY:	1 x 25w
DIMMABLE:	Yes - MLV On Transformer Primary
TRANSFORMER REQUIRED:	Yes

MOUNTING	
CANOPY:	3.5" Dia.
LEAD WIRE:	1 X 72"

SHIPPING	
CARTON LENGTH:	6.3"
CARTON WIDTH:	6.3"
CARTON HEIGHT:	12.6"
CARTON WEIGHT:	2 lbs.



PRODUCT DETAILS:

- This chain or cable hung fixture may be installed on any sloped ceiling.
- Suitable for use in wet (interior direct splash and outdoor direct rain or sprinkler) locations as defined by NEC and CEC. Meets United States UL Underwriters Laboratories & CSA Canadian Standards Association Product Safety Standards
- Warm rich light bronze tone
- Please refer to Hinkley's Warranty for complete product warranty details; some warranty limitations may apply.

HINKLEY

HINKLEY
33000 Pin Oak Parkway
Avon Lake, OH 44012

PHONE: (440) 653-5500
Toll Free: 1 (800) 446-5539

hinkley.com