

# BARTON

## 46351GW-LCB

### MEDIUM FLUSH MOUNT

Timeless with a classic equestrian aesthetic, Barton's metal dome shade with double-strap design is available in Matte Black, Matte White, or Gloss White with Navy finishes complemented by Lacquered Brass and an etched opal glass diffuser.

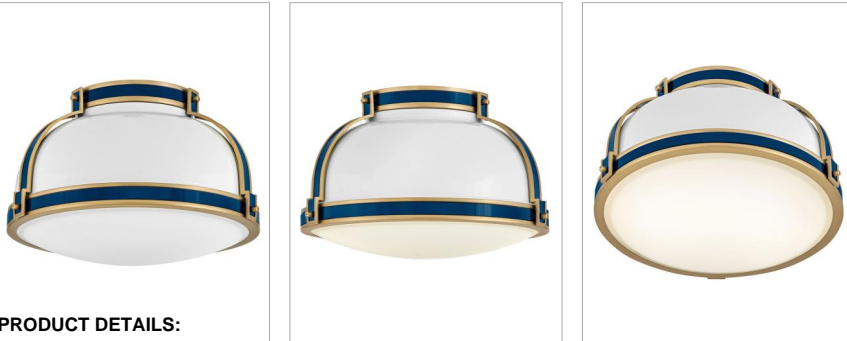
DETAILS	
FINISH:	Gloss White
MATERIAL:	Steel
GLASS:	Etched Opal
DIMMABLE:	No

DIMENSIONS	
WIDTH:	14.3"
HEIGHT:	8.5"
WEIGHT:	7.3lb

LIGHT SOURCE	
LIGHT SOURCE:	Socketed
WATTAGE:	2-10w Med. LED, 60w Equiv.
VOLTAGE:	120v

MOUNTING	
CANOPY:	6.5" Dia.

SHIPPING	
CARTON LENGTH:	15.5
CARTON WIDTH:	15.3
CARTON HEIGHT:	10.5
CARTON WEIGHT:	8.8



#### PRODUCT DETAILS:

- Suitable for use in dry (indoor) locations as defined by NEC and CEC. Meets United States UL Underwriters Laboratories & CSA Canadian Standards Association Product Safety Standards.
- Ideal for vintage filament bulbs (not included)
- Merging the best of traditional and modern elements with a sophisticated and streamlined look

# HINKLEY

HINKLEY  
33000 Pin Oak Parkway  
Avon Lake, OH 44012

PHONE: (440) 653-5500  
Toll Free: 1 (800) 446-5539

[hinkley.com](http://hinkley.com)