

TRESS

3678CPG

LARGE SINGLE TIER

Tress approaches style from different angles. Available in a variety of styles including a ring and linear chandelier, pendant, and sconce - recognized by its hammered metal rods of Champagne Gold, Forged Iron, or Burnished Nickel (sconce only). Tress uses this natural look to add an organic feel to transitional decor.

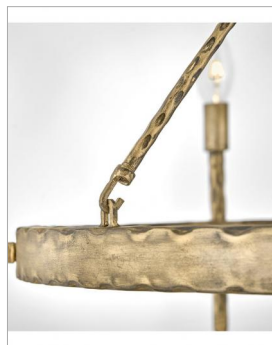
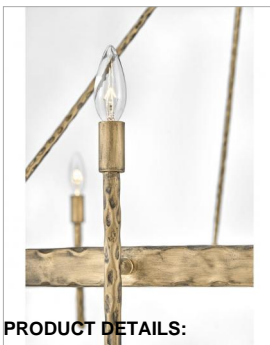
DETAILS	
FINISH:	Champagne Gold
MATERIAL:	Steel
SLOPE DEGREE:	90

DIMENSIONS	
WIDTH:	36.3"
HEIGHT:	26"
WEIGHT:	9.7
TOP TO OUTLET:	0

LIGHT SOURCE	
LIGHT SOURCE:	Socket
WATTAGE:	6-60w Cand.
VOLTAGE:	120v

MOUNTING	
CANOPY:	6.5" Dia.
LEAD WIRE:	1 X 120"
MAX HEIGHT:	58.8

SHIPPING	
CARTON LENGTH:	40.5
CARTON WIDTH:	40.5
CARTON HEIGHT:	6
CARTON WEIGHT:	23.1



PRODUCT DETAILS:

- This stem hung fixture may be hung on a sloped ceiling
- This fixture includes multiple down stems in various lengths to customize the installation height of the fixture, including one 6" stem and two 12" stems.
- Suitable for use in dry (indoor) locations as defined by NEC and CEC. Meets United States UL Underwriters Laboratories & CSA Canadian Standards Association Product Safety Standards
- Merging the best of traditional and modern elements, with a sophisticated and streamlined silhouette perfect for any space
- Luxurious gold finish with opulent sheen
- Please refer to Hinkley's Warranty for complete product warranty details; some warranty limitations may apply.

HINKLEY

HINKLEY
33000 Pin Oak Parkway
Avon Lake, OH 44012

PHONE: (440) 653-5500
Toll Free: 1 (800) 446-5539

hinkley.com