

# Invisia™ Corner Shelf

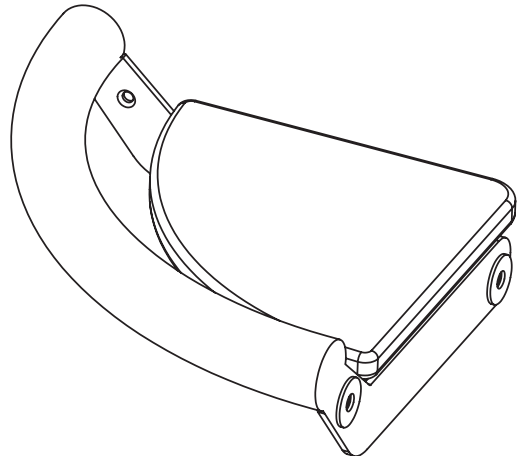
with Integrated Support Rail



## Technical Data Sheet

### Product Specification

The product shall be a combination corner shelf and grab rail. The product shall have a removable solid surface shelf. The product shall be mounted to the wall using two discreet 0.125"/0.318cm thick plates. The grab rail portion of the product shall be 1.25"/3.2 cm in diameter. The product shall be suitable for use in a wet environment. The product shall have a weight capacity in excess of 500lbs / 227kg. Product shall comply with ADAAG 4.26.3 specifying the structural strength of grab bars, tubs and shower seats. The grab rail shall be HealthCraft Products model INV-CS-\_\_\_\_ (see table below for appropriate product code).



### Key Features

- Elegant Design with Integrated Support
- Solid Surface Shelf
- Solid Construction and Mounting
- Discreet Wall Support
- Suitable For Use in a Wet Environment
- 500lbs / 227kg Weight Capacity

### Codes and Standards

- ADA Compliant Rail Diameter
- ADA Compliant Structural Strength (ADAAG 4.26.3)

### Specified Model

| Model     | Finish          | Material             |
|-----------|-----------------|----------------------|
| INV-CS-BS | Brushed         | #304 Stainless Steel |
| INV-CS-CP | Polished Chrome |                      |

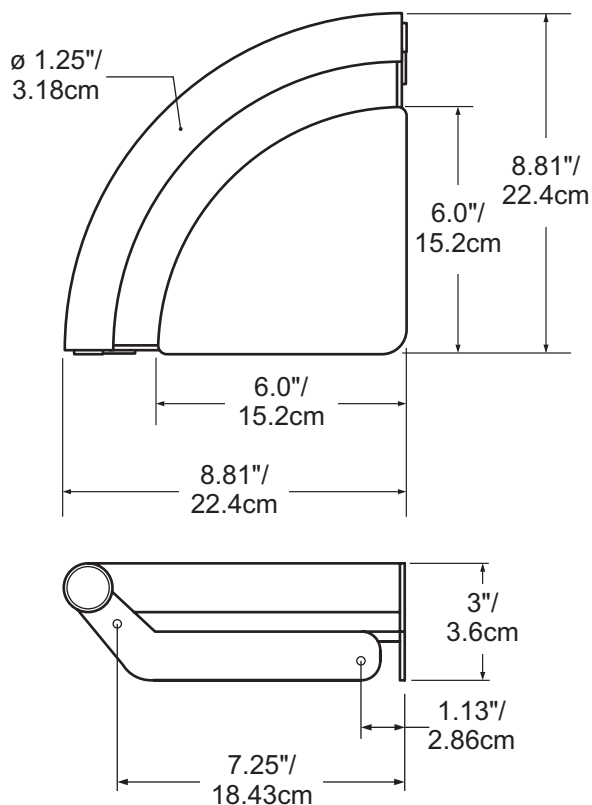
# Invisia™ Corner Shelf

with Integrated Support Rail



## Technical Data Sheet

### Product Dimensions



### Shipping Dimensions

| Model | Height (H)  | Width (W)     | Depth (D)      | Weight       |
|-------|-------------|---------------|----------------|--------------|
| CS    | 4" / 10.2cm | 9.5" / 24.1cm | 10.5" / 26.7cm | 4lbs / 1.8kg |

