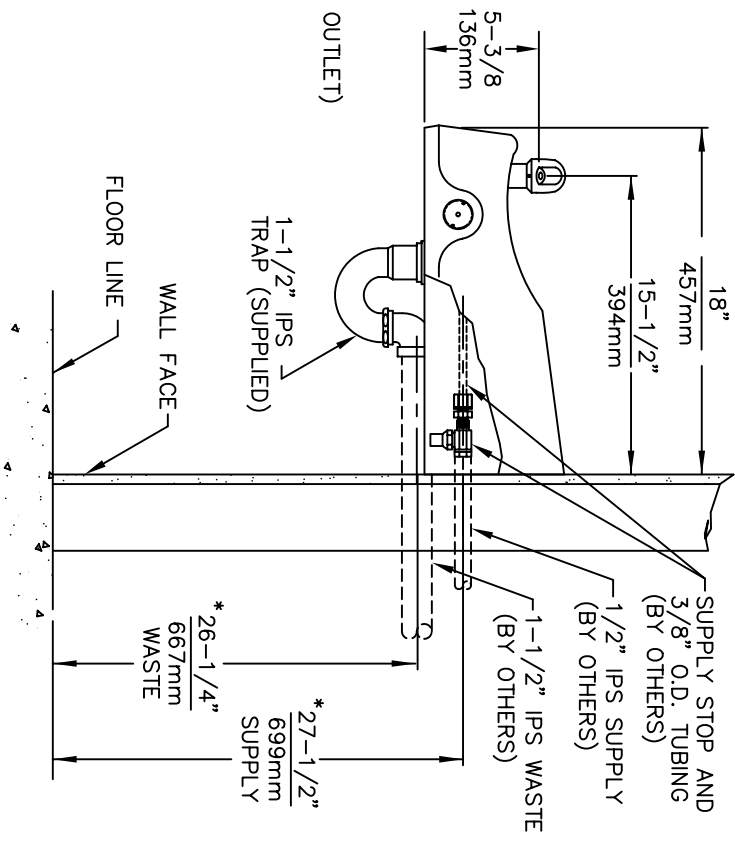
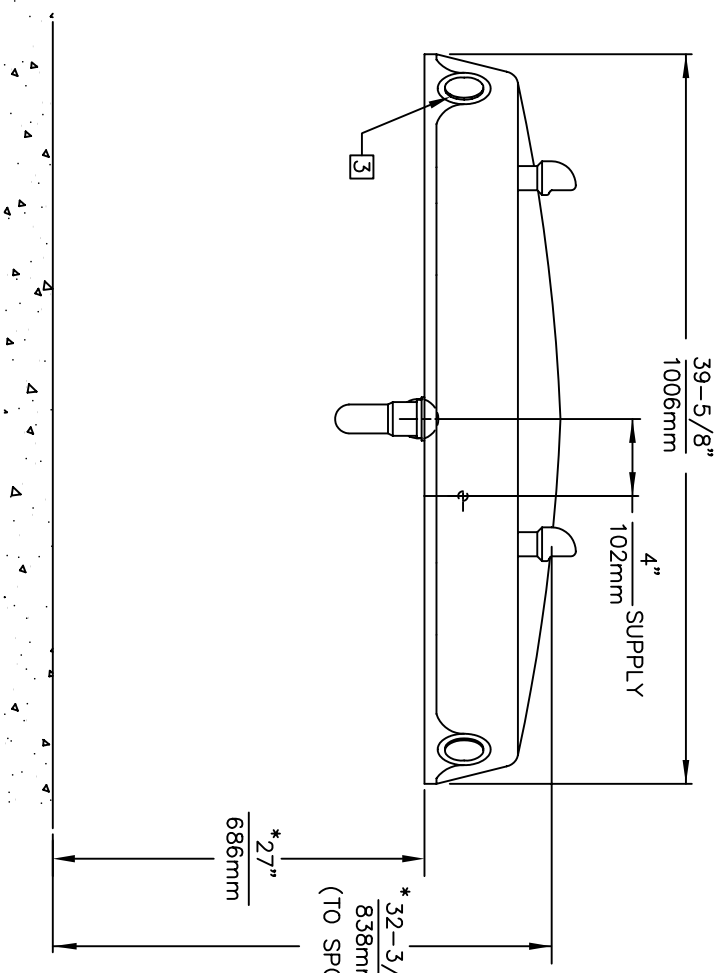



**MOUNTING DETAIL**



- NOTES:**
1. HOLD ROUGH-IN DIMENSIONS  $\pm 1/4"$  (6.4mm).
  2. WHEN INSTALLING THIS UNIT, LOCAL, STATE, OR FEDERAL CODES SHOULD BE ADHERED TO. FOR INSTALLATION HEIGHTS OTHER THAN SHOWN, DIMENSIONS MARKED (\*) MUST BE ADJUSTED ACCORDINGLY.
  3. REFER TO 5874/VRK5874 OPERATION AND MAINTENANCE MANUAL FOR PUSH BUTTON AND VALVE INSTALLATION/MAINTENANCE INSTRUCTIONS.



1455 KLEPPE LANE  
SPARKS, NEVADA 89431  
(775) 359-4712 FAX (775) 359-7424  
EMAIL: HAWS@HAWS.CO.COM  
WEBSITE: WWW.HAWS.CO.COM

EQ# NO.:	1441	MODEL(S):	1441
DATE:	08/92	INFO FAX DOC #:	21441
APPROVER:	C. HAWES	DESIGNER:	TRB
		DRAWING TYPE:	INSTALLATION/EXHIBIT
DATE:	08/92	SIZE:	A
		SHEET:	1 OF 1