

**NOTES:**

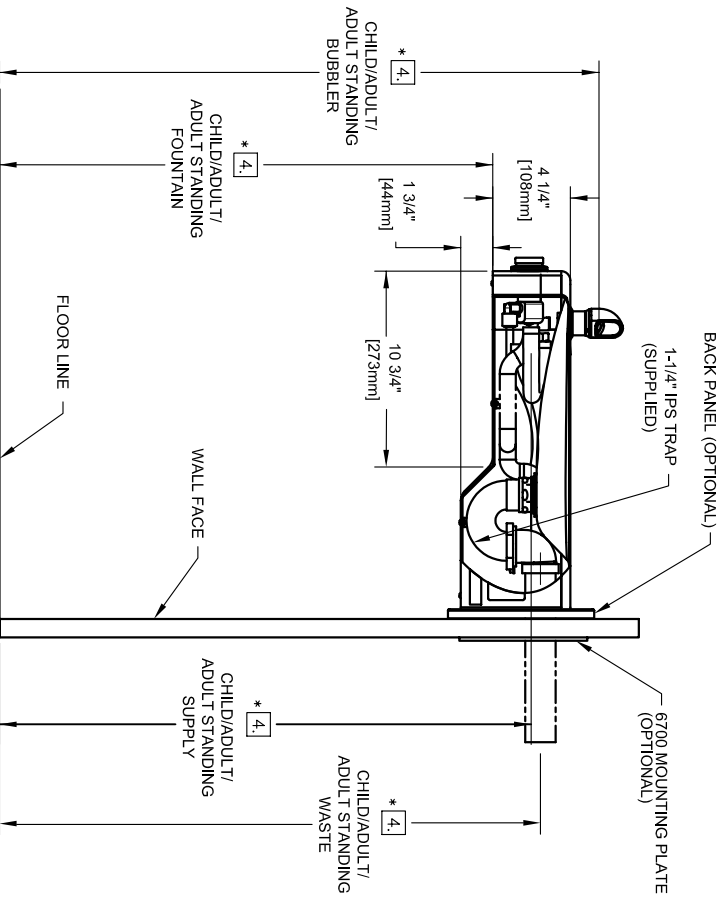
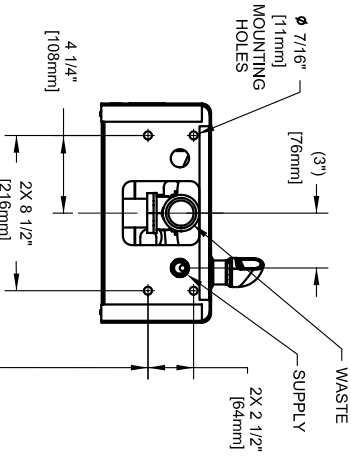
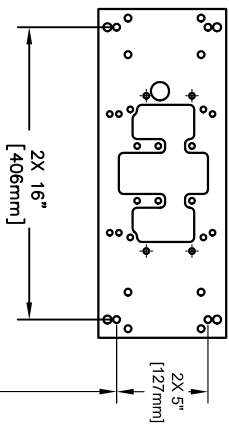
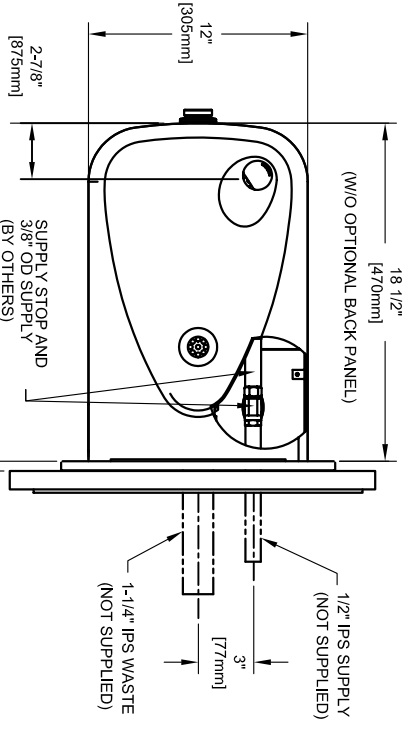
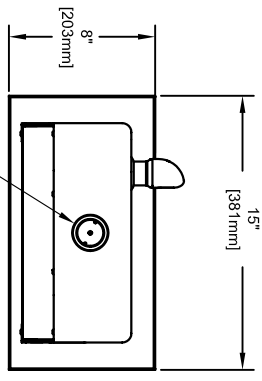
1. HOLD ROUGH-IN DIMENSIONS  $\pm 1/4"$  (6.4MM).
2. WHEN INSTALLING THIS UNIT, LOCAL, STATE OR FEDERAL CODES SHOULD BE ADHERED TO. FOR INSTALLATION HEIGHTS OTHER THAN SHOWN, DIMENSIONS MARKED (\*) MUST BE ADJUSTED ACCORDINGLY.
3. REFER TO 5874V/RK5874 OPERATION AND MAINTENANCE MANUAL FOR PUSH BUTTON AND VALVE INSTALLATION AND MAINTENANCE INSTRUCTIONS.
4. ROUGH IN DIMENSIONS FOR FOUNTAIN HEIGHTS:

CHILD WHEELCHAIR HEIGHT: SEE SHT 2 FIG 1

- WASTE: 26-1/4" (667mm)
- SUPPLY: 26-1/8" (664mm)
- MOUNTING HOLE: 24-13/16" (630mm)
- MOUNTING PLATE: 23-3/16" (589mm)
- FOUNTAIN: 24" (610mm)
- BUBBLER: 29-7/8" (756mm)

ADULT WHEELCHAIR HEIGHT: SEE SHT 2 FIG 2

- WASTE: 29-1/4" (743mm)
  - SUPPLY: 29-1/8" (740mm)
  - MOUNTING HOLE: 27-13/16" (706mm)
  - MOUNTING PLATE: 26-3/16" (663mm)
  - FOUNTAIN: 27" (686mm)
  - BUBBLER: 32-7/8" (832mm)
- STANDING ADULT HEIGHT: SEE SHT 2 FIG 3
- WASTE: 34-3/4" (883mm)
  - SUPPLY: 34-5/8" (879mm)
  - MOUNTING HOLE: 33-5/16" (846mm)
  - MOUNTING PLATE: 31-11/16" (805mm)
  - FOUNTAIN: 32-1/5" (826mm)
  - BUBBLER: 38-3/8" (972mm)



**MOUNTING DETAIL**  
BACK VIEW

**MOUNTING PLATE**  
(OPTIONAL, HAWS 6700)



EGMTN: 1107L DRAWN: C. FENNER DATE: 10/06 APPROVER:	MODEL(S): 1107L INFO FAX DOC #: 211075 SCALE: 1:1 DRAWING TYPE: INSTALLATION/BACK	1455 KLEPPE LANE SPARKS, NEVADA 89431 (775) 359-4712 FAX (775) 359-7424 E-MAIL: HAWS@HAWSCCO.COM WEBSITE: WWW.HAWSCCO.COM	P.O. BOX 200232 D LAS VEGAS, NV 89126 15267A00 6
--	--	---	---