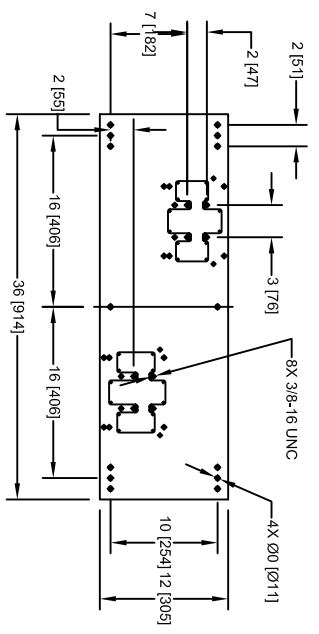
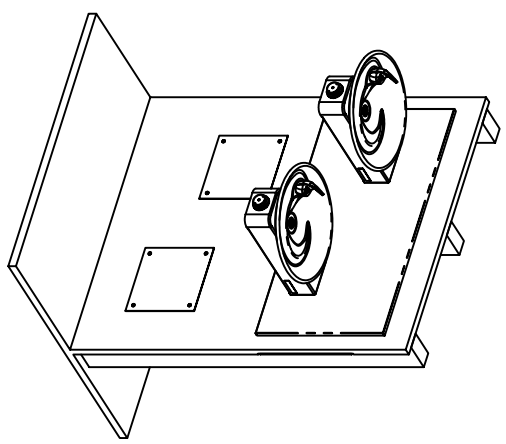
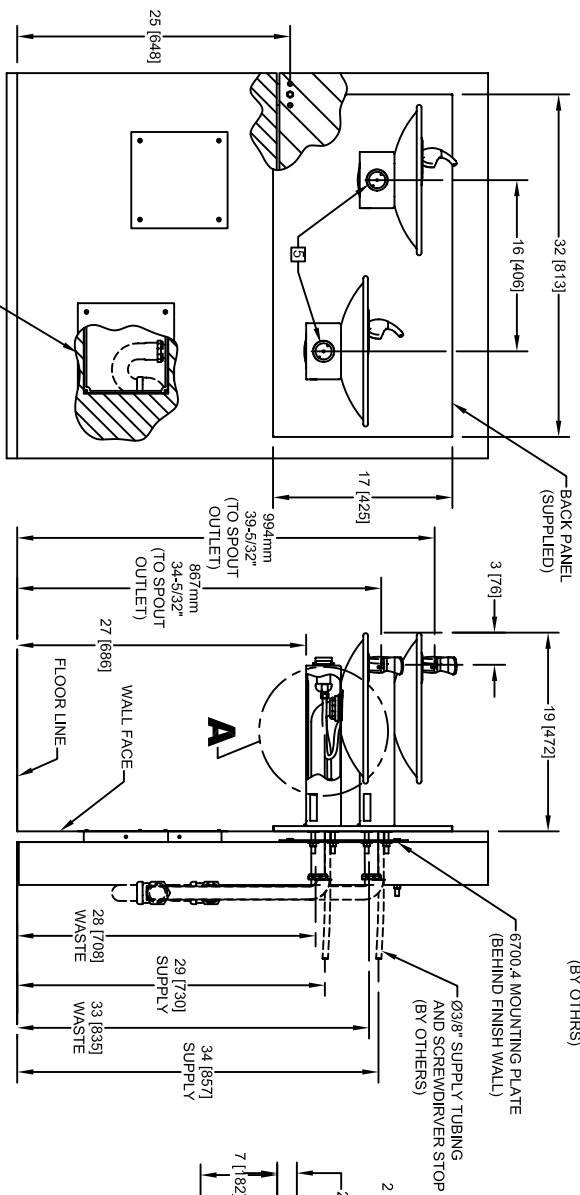
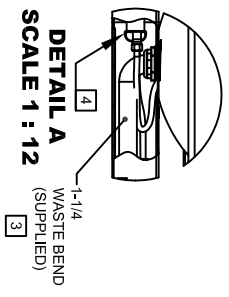
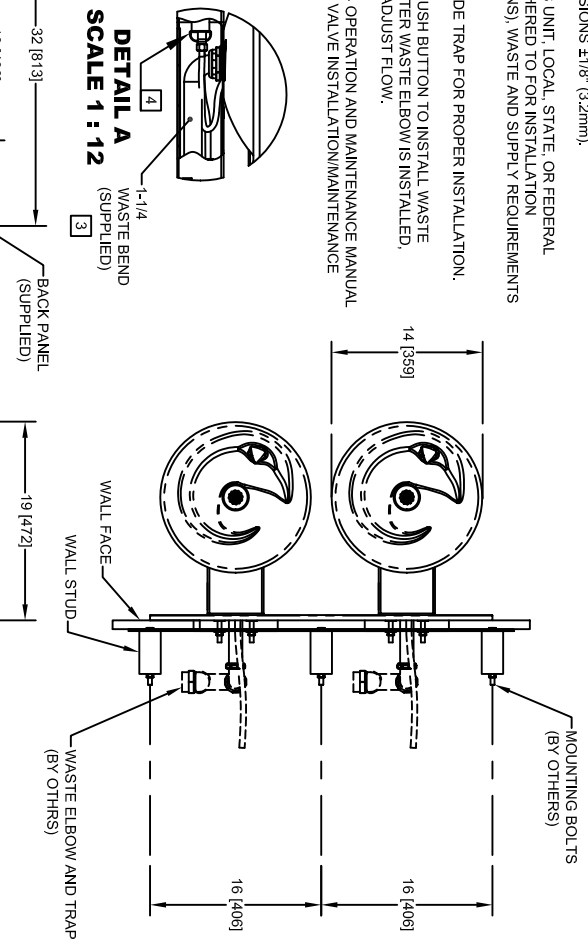


- NOTES:**
- HOLD ROUGH-IN DIMENSIONS ±1/8" (3.2mm).
 - WHEN INSTALLING THIS UNIT, LOCAL, STATE, OR FEDERAL CODES SHOULD BE ADHERED TO FOR INSTALLATION DIMENSIONS (LOCATIONS), WASTE AND SUPPLY REQUIREMENTS OTHER THAN SHOWN.
 - INSTALLER MUST PROVIDE TRAP FOR PROPER INSTALLATION.
 - REMOVE VALVE FROM PUSH BUTTON TO INSTALL WASTE ELBOW ONTO BOWL. AFTER WASTE ELBOW IS INSTALLED, REINSTALL VALVE AND ADJUST FLOW.
 - REFER TO 5874V/RK5874 OPERATION AND MAINTENANCE MANUAL FOR PUSH BUTTON AND VALVE INSTALLATION/MAINTENANCE INSTRUCTIONS.



6700.4 MOUNTING PLATE MUST BE INSTALLED BEFORE FINISH WORK. THIS PLATE IS A STANDARD ITEM.

OPTIONAL TRAP ACCESS PANEL
MODELS 6603 AND 6603HPS



1455 KLEPPE LANE
SPARKS, NEVADA 89431
(775) 359-4712 FAX (775) 359-7424
E-MAIL: HAWS@HAWS.CO.COM
WEBSITE: WWW.HAWS.CO.COM

ED. NO.:	1011/1011HPS	MODEL(S):	1011/1011HPS
DATE:	02/98	INFO. FAX DOC #:	21011
APPROVED:		DESIGN TYPE:	INSTALLATION/EXHIBIT
DATE:		SIZE:	A
NO. OF SHEETS:	1	SHEET:	1 OF 1