

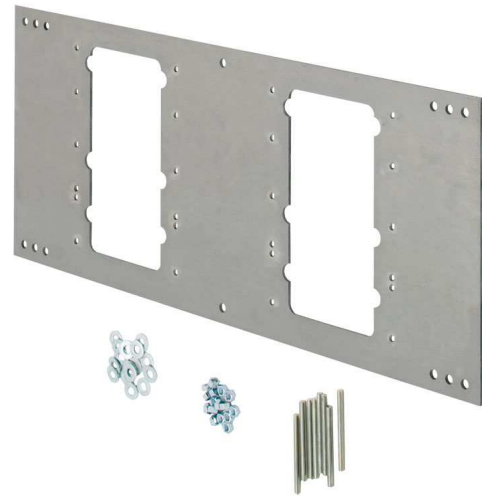
## FEATURES & BENEFITS

### MOUNTING

3/16" (.47 cm) steel pre-drilled and threaded mounting plate along with all-thread studs, nuts, and washers provides the maximum support and facilitates easy installation for Haws 'Hi-Lo' 1117L drinking fountain.

### OPTIONS

For more information, visit [www.hawsc.com](http://www.hawsc.com) or call (888) 640-4297.



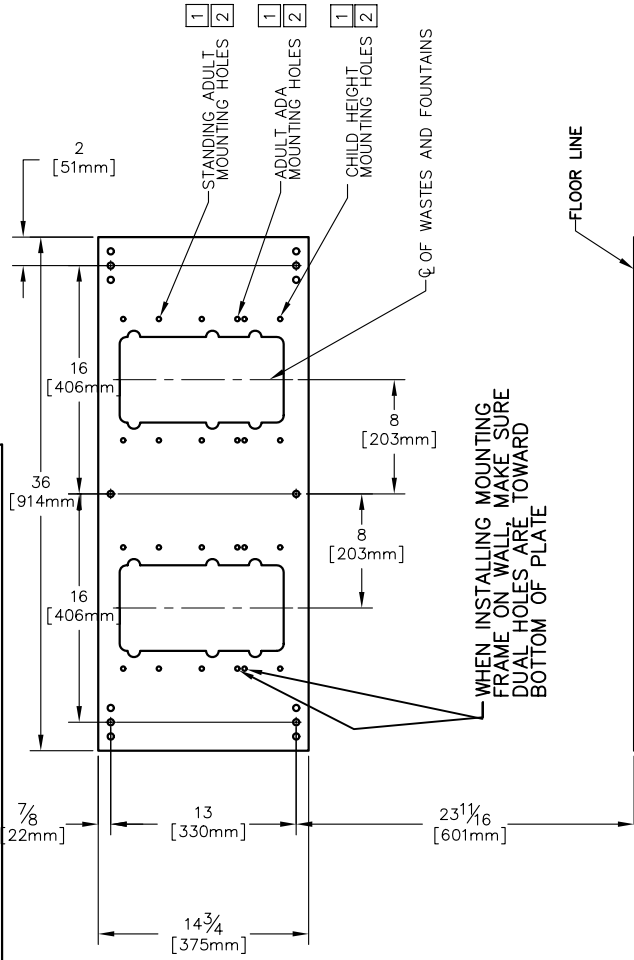
## SPECIFICATIONS

Model 6717 'Hi-Lo' mounting plate for Haws fountain model 1117L shall include a 3/16" (.47 cm) steel pre-drilled and threaded mounting plate along with all-thread studs, nuts, and washers.

## APPLICATIONS

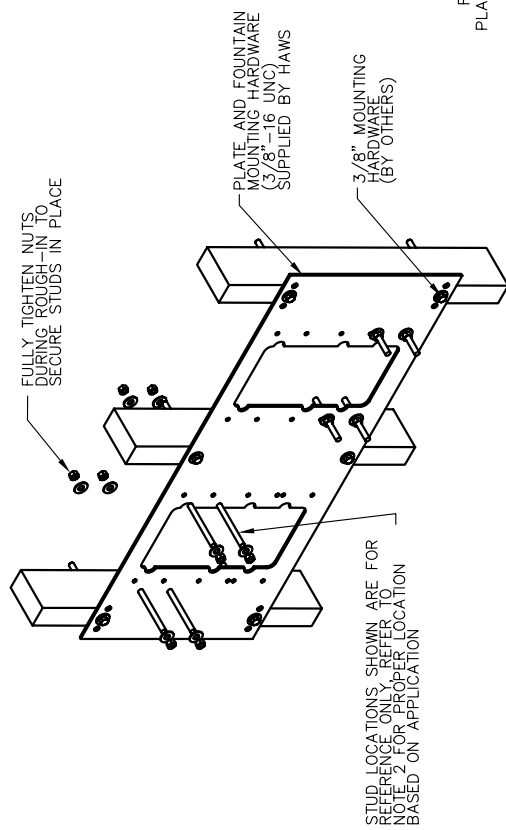
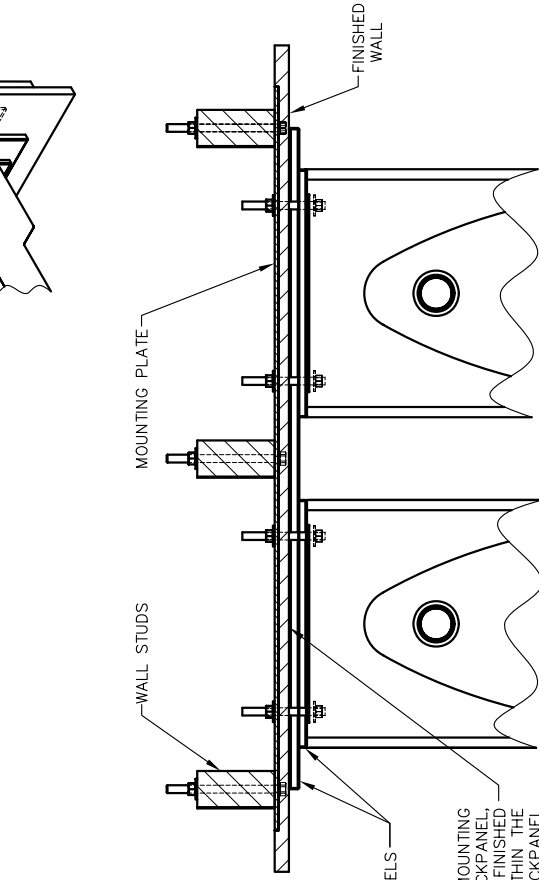
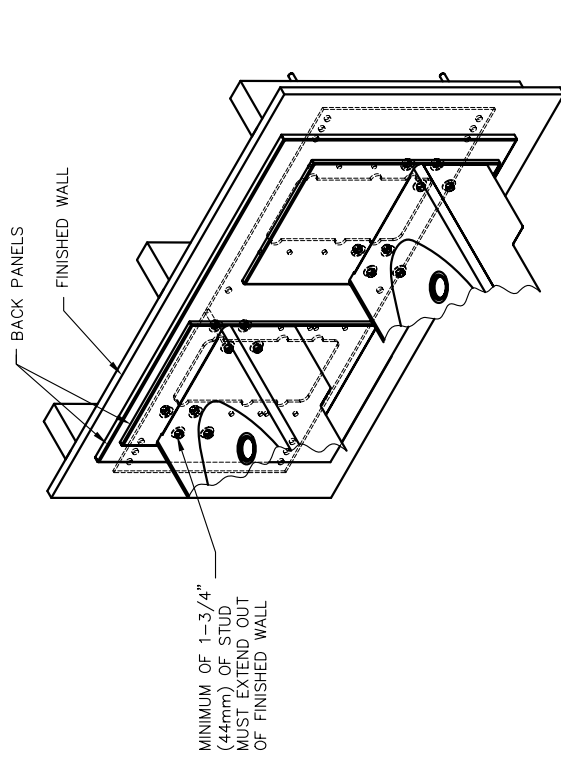
Haws produces mounting plates and frames to assist in the installation process as well as to provide a solid base for the wall mounted designed fountains. Mounting plates and frames meet the requirements solely for the specified applicable fountains and are not designed to be used in the installation of any unspecified fountain.

THIS DOCUMENT IS TRUE AND CORRECT AT TIME OF PUBLICATION. CONTINUED PRODUCT IMPROVEMENTS MAKE SPECIFICATIONS AND MEASUREMENTS SUBJECT TO CHANGE WITHOUT NOTICE.



NOTES:

1. SEE 1117L INSTALLATION DRAWING (SHEET 1) FOR PLUMBING ROUGH-IN DIMENSIONS
2. SEE 1117L INSTALLATION DRAWING (SHEET 2) FOR DETAILED FOUNTAIN MOUNTING POSITIONS.



STUD LOCATIONS SHOWN ARE FOR REFERENCE ONLY. REFER TO NOTE 2 FOR PROPER LOCATION BASED ON APPLICATION

CAUTION

REGARDING CONCRETE/MASONRY WALL MOUNTING:  
DO NOT SECURE MOUNTING PLATE TO SAME SIDE OF WALL AS FOUNTAIN. AVOID COMPROMISING INTEGRITY OF WALL WHEN ANCHORING FOUNTAIN. IT IS RECOMMENDED THAT INSTALLER CALL TECHNICAL SUPPORT IF THERE ARE ANY QUESTIONS AS TO HOW TO OBTAIN A PROPER ANCHOR IN CONCRETE/MASONRY WALLS. 1-800-766-5612



INFO FAX : 1-888-FAX-HAWS (1-888-329-4297)  
1455 Kleppe Ln, Sparks NV, 89431  
Phone: 775-359-4712 Fax: 775-359-7424  
Haws Ag, Bachweg 3, CH-3401 Burgdorf Switzerland  
Haws Mfg Pte Ltd 14 Sungai Kadut Loop Singapore 729531  
e-mail: Haws@hawsco.com website: www.hawsco.com

REV. NO. 3890  
DATE 12-12-06  
APPROVED C. FENNER  
DESIGNED PER DATE 06/27/05  
BY 15278A00  
SCALE: 1:1  
MODEL(S): 1117L  
INFO. FAX. DOC. #:  
INSTALLATION FEEDBACK