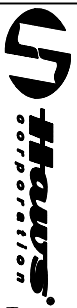
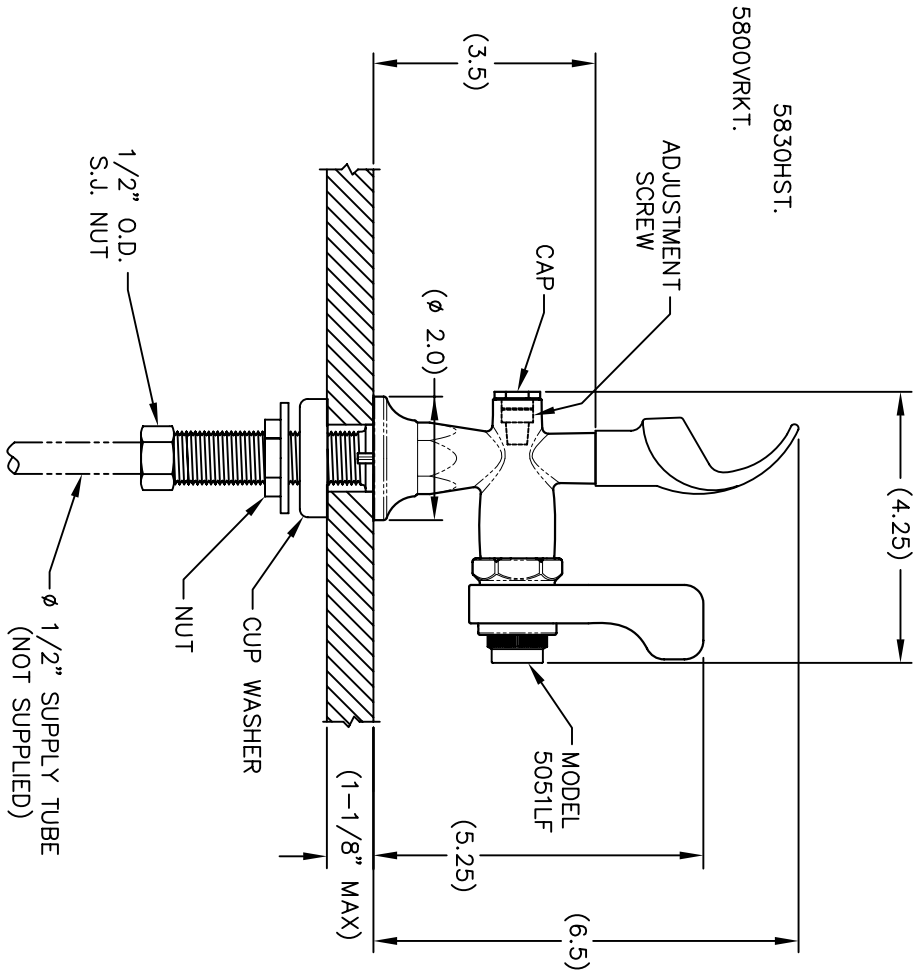
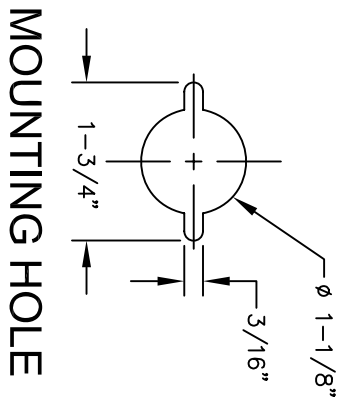


**NOTE:**

1. BE SURE INDEXING PIN IS INSTALLED AND ORIENTED TO ACCOMMODATE YOUR DESIRED MOUNTING
2. TO ADJUST FLOW, TURN ADJUSTMENT SCREW COUNTER CLOCKWISE TO INCREASE FLOW, AND CLOCKWISE TO DECREASE FLOW.
3. THE HANDLE/STEM REPAIR KIT FOR THIS MODEL IS:
4. THE VALVE REPAIR KIT FOR THIS MODEL IS:



INFO FAX : 1-888-FAX-HAWS (1-888-329-4297)  
 1455 Kleppe Ln, Sparks NY, 89431  
 Phone: 775-359-4712 Fax: 775-359-7424  
 Haws Ag Bachweg 3 CH-3401 Burgdorf Switzerland  
 Haws Mfg Pte Ltd 74 Sungei Kadut Loop Singapore 729531  
 e-mail: Haws@hawsco.com website: www.hawsco.com

FORM NO.	REVISED PER	DATE	BY	CHK'D	DATE	BY	SCALE	TYPE	INSTALLATION/FABRICATION
5051LF	5051LF	07					1:3		
MODEL(S)	5051LF	INFO FAX DOC #	2505153						
PART NUMBER	0002077515	DRAWING NUMBER	12986A00	SHEET	1	OF	1		