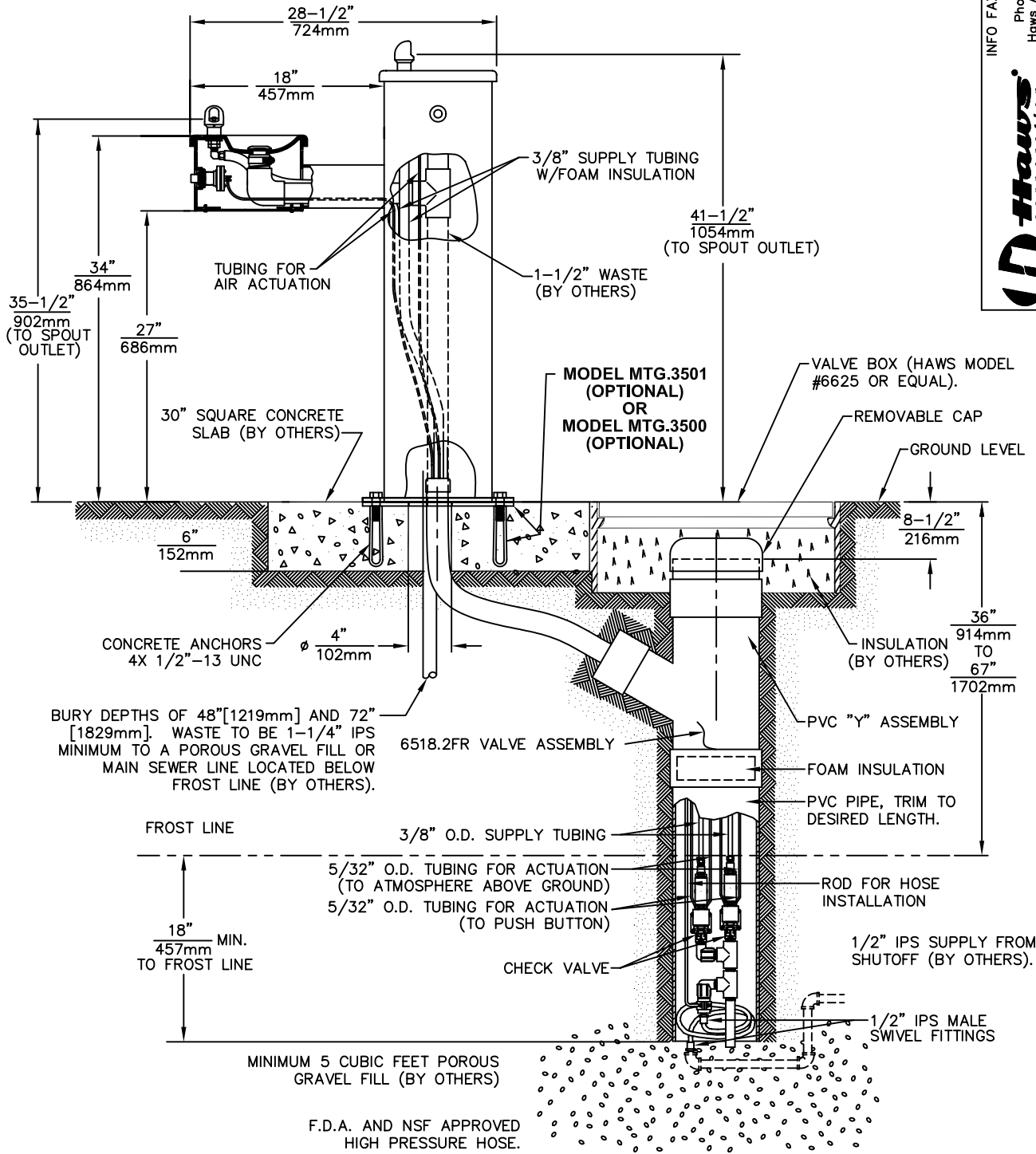


PEDESTAL MOUNTING DETAIL

NOTE:
DOOR SPECIFIED BY CUSTOMER
AND SHIPPED SEPARATELY.



BURY DEPTHS OF 48" [1219mm] AND 72" [1829mm]. WASTE TO BE 1-1/4" IPS MINIMUM TO A POROUS GRAVEL FILL OR MAIN SEWER LINE LOCATED BELOW FROST LINE (BY OTHERS).

FROST LINE
18" MIN. TO FROST LINE
457mm

MINIMUM 5 CUBIC FEET POROUS GRAVEL FILL (BY OTHERS)

F.D.A. AND NSF APPROVED HIGH PRESSURE HOSE.

Haws Corporation

INFO FAX : 1-888-FAX-HAWS (1-888-329-4297)
1455 Kleppe Ln, Sparks NV, 89431
Phone: 775-355-1727 Fax: 775-355-7424
Haws Ag, Bachweg 3, CH-3401 Burgdorf, Switzerland
Haws Mfg Pte Ltd 74 Sungai Kadut Loop Singapore 729551
e-mail: Haws@hawsco.com website: www.hawsco.com

ORDER NO. HAW-3574
DATE: 10/29/99
APPROVED: [Signature]

MODEL(S): 3500FR
INFO FAX DOC # 2350037
SCALE: 1:14 DRAWING TYPE: INSTALLATION/FABRACK

0009401445C00
14045C00
REV: 16
SIZE: A SHL: 1 OF 1

THIS DOCUMENT IS TRUE AND CORRECT AT TIME OF PUBLICATION. CONTINUED PRODUCT IMPROVEMENTS MAKE SPECIFICATIONS AND MEASUREMENTS SUBJECT TO CHANGE WITHOUT NOTICE.