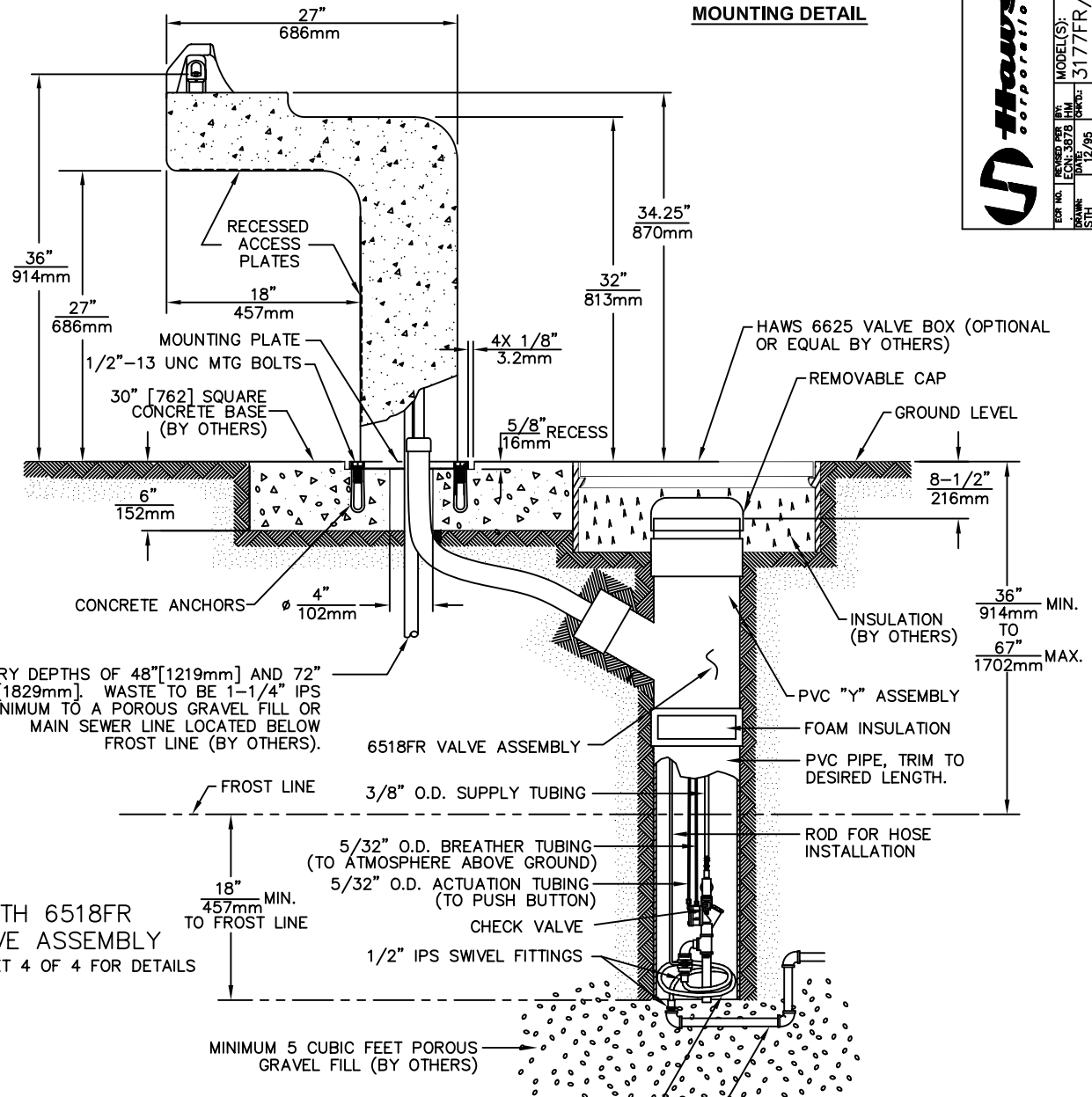


4X 1/2-13 UNC MOUNTING BOLTS (SUPPLIED)

MOUNTING DETAIL



NOTES:

1. SEE SHEET 2 OF 4 FOR DETAILS OF UNIT CONFIGURED WITH 6280FR JUG FILLER KIT.
2. SEE SHEET 3 OF 4 FOR DETAILS OF UNIT CONFIGURED WITH 6519FR FREEZE VALVE.

F.D.A. AND NSF APPROVED HIGH PRESSURE HOSE.

1/2" IPS SUPPLY FROM SHUTOFF (BY OTHERS).

Haws Corporation

INFO FAX : 1-888-FAX-HAWS (1-888-329-4297)
 1455 Kleppel Springs, NY 11943
 Phone: 715-359-4721 / 715-359-7424
 Haws AG, Bachstr. 3, CH-3401 Burgdorf, Switzerland
 Haws (S) Pte Ltd, 74, Sungai Kadut Loop, Singapore 729531
 e-mail: haws@hawsco.com website: www.hawsco.com

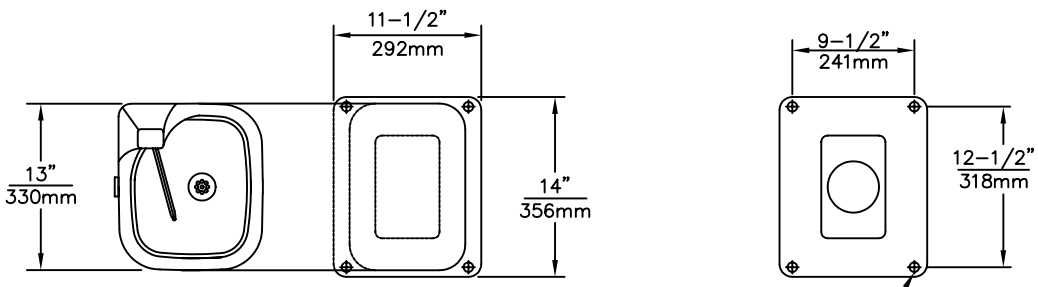
MODEL(S): 6625, 6625.D
 DRAWING NUMBER: 12205A00
 REV: 15
 SHEET: 1 OF 4

SCALE: 1:15 DRAWING TYPE: INSTALLATION/BACK

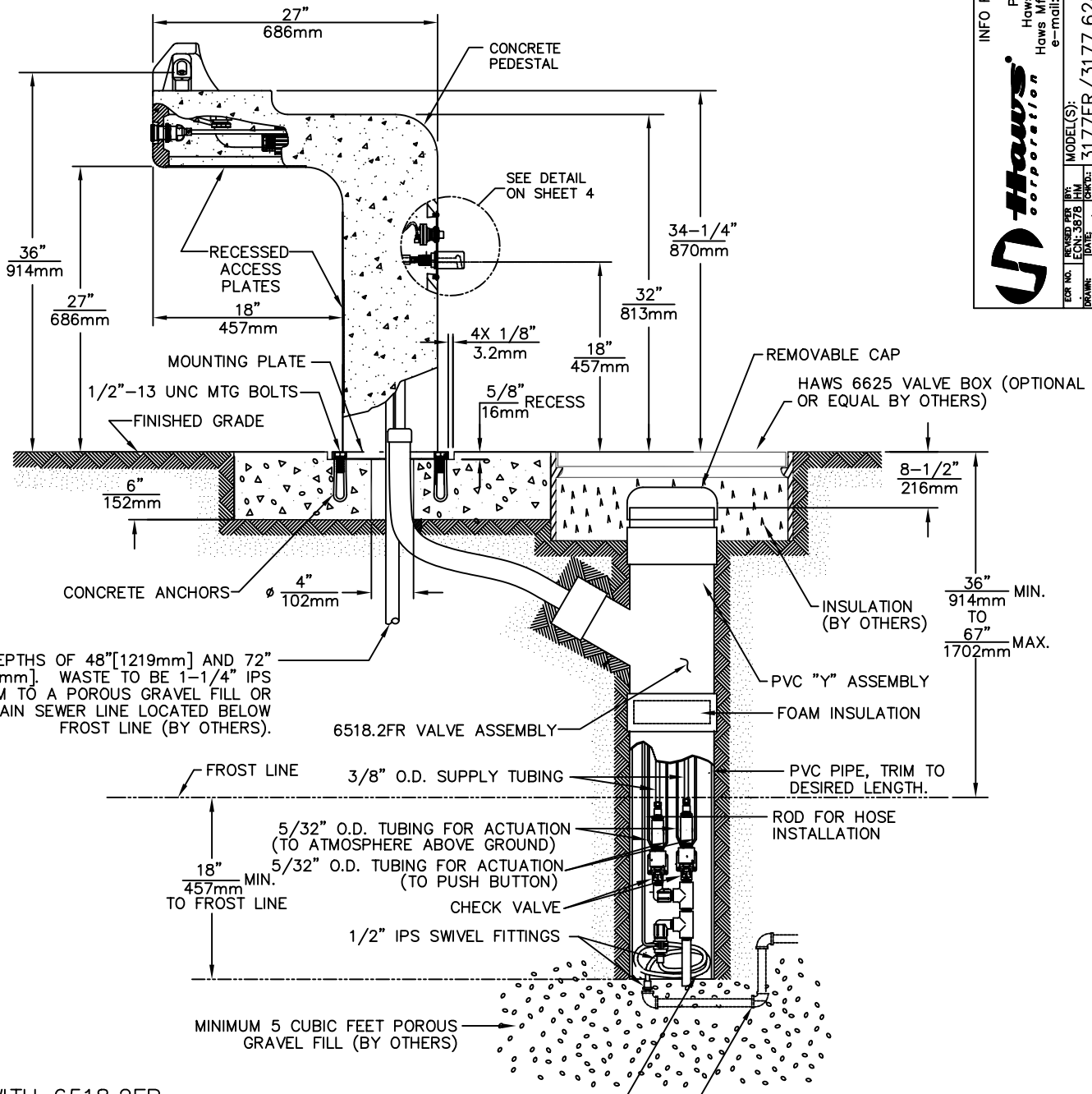
FOR NO. REVISIONS BY: 3177FR/3177.6519FR
 DATE: 12/05/06
 APPROVED: INFO FAX DOC # 2317737/23177628/23177651

THIS DOCUMENT IS TRUE AND CORRECT AT TIME OF PUBLICATION. CONTINUED PRODUCT IMPROVEMENTS MAKE SPECIFICATIONS AND MEASUREMENTS SUBJECT TO CHANGE WITHOUT NOTICE.

©2006 Haws Corporation - All Rights Reserved HAWS® and other trademarks used in these materials are the exclusive property of Haws Corporation.



4X 1/2-13 UNC MOUNTING BOLTS (SUPPLIED)



BURY DEPTHS OF 48" [1219mm] AND 72" [1829mm]. WASTE TO BE 1-1/4" IPS MINIMUM TO A POROUS GRAVEL FILL OR MAIN SEWER LINE LOCATED BELOW FROST LINE (BY OTHERS).

6518.2FR VALVE ASSEMBLY

WITH 6518.2FR VALVE ASSEMBLY SEE SHEET 4 OF 4 FOR DETAILS

F.D.A. AND NSF APPROVED HIGH PRESSURE HOSE.

1/2" IPS SUPPLY FROM SHUTOFF (BY OTHERS).

INFO FAX : 1-888-FAX-HAWS (1-888-329-4297)
 1455 Kleppe Ln, Sparks NV, 89431
 Phone: 775-359-4712 Fax: 775-359-7424
 Haws Ag, Bachweg 3, CH-3401 Burgdorf, Switzerland
 Haws Mfg Pte Ltd, 174 Sungai Kadut Loop, Singapore 729531
 e-mail: Haws@hawsco.com website: www.hawsco.com

Haws Corporation

MODEL(S): 3177FR/3177 6280FR/3177 6519FR
 INFO FAX DOC #: 2317737/23177628/23177651
 SCALE: E.T.S. DRAWING TYPE: INSTALLATION/FABRICATION
 DATE: 02/21/06
 DRAWN: H.M.
 CHECKED: H.M.
 APPROVED: H.M.

0005A00 7325.D
 DRAWING NUMBER: 12205A00 15
 SHEET: A SH. 2 OF 4

THIS DOCUMENT IS TRUE AND CORRECT AT TIME OF PUBLICATION. CONTINUED PRODUCT IMPROVEMENTS MAKE SPECIFICATIONS AND MEASUREMENTS SUBJECT TO CHANGE WITHOUT NOTICE.

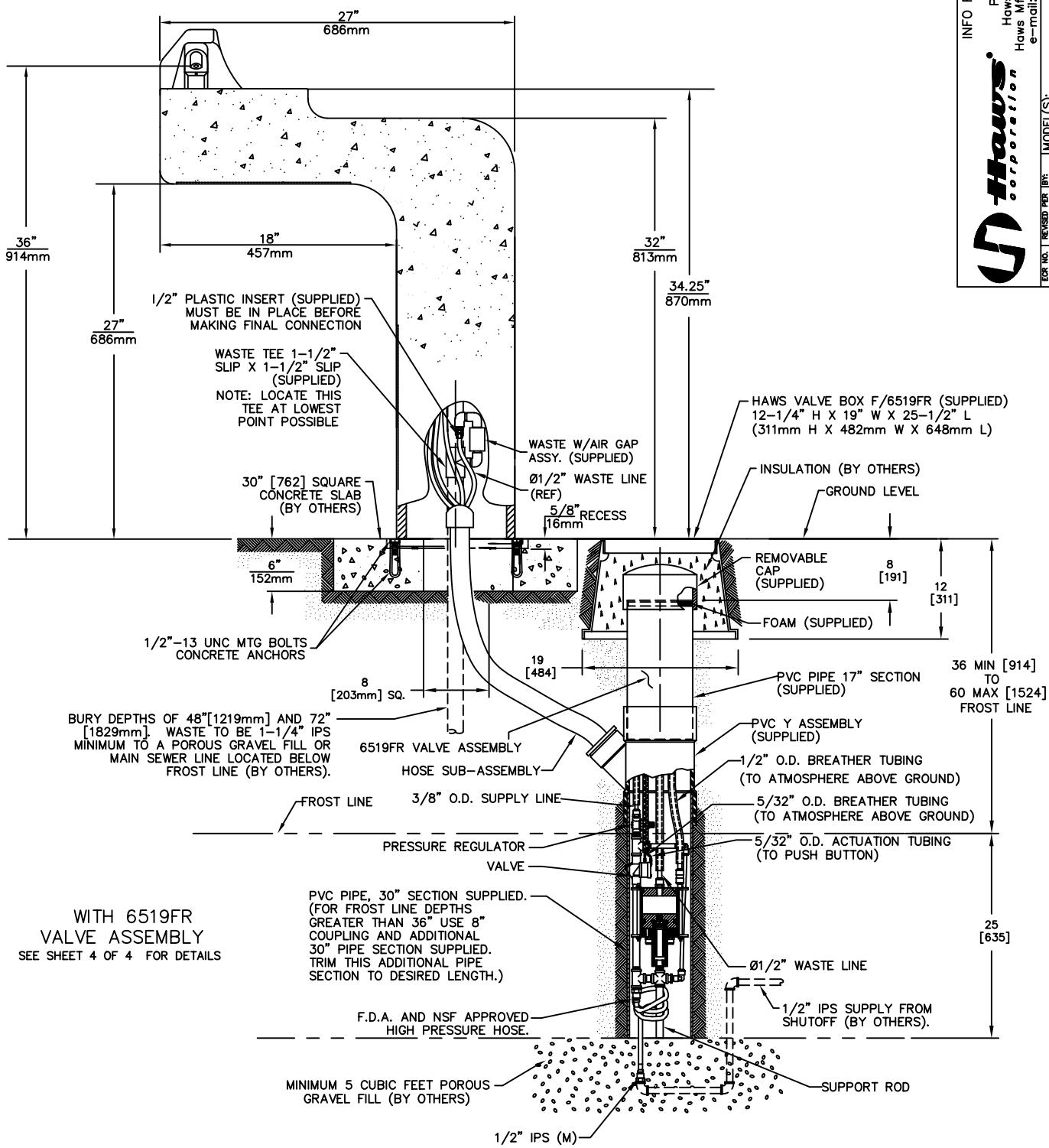
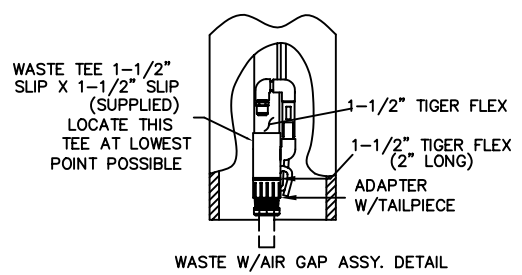
©2006 Haws Corporation - All Rights Reserved HAWS® and other trademarks used in these materials are the exclusive property of Haws Corporation.

Haws Corporation

INFO FAX : 1-888-FAX-HAWS (1-888-329-4297)
 1455 Kleppe Ln, Sparks NV, 89431
 Phone: 775-359-4712 Fax: 775-359-7424
 Haws Ag, Bachweg 3, CH-3401 Burgdorf Switzerland
 Haws Mfg Pte Ltd 14 Sungai Kadut Loop Singapore 729531
 e-mail: Haws@hawsco.com website: www.hawsco.com

MODEL(S): 3177FR/3177 6280FR/3177 6519FR
 INFO FAX DOC # 2317737/23177628/23177651
 SCALE: 1/8" = 1'-0" DRAWING TYPE: INSTALLATION/FABRICATION

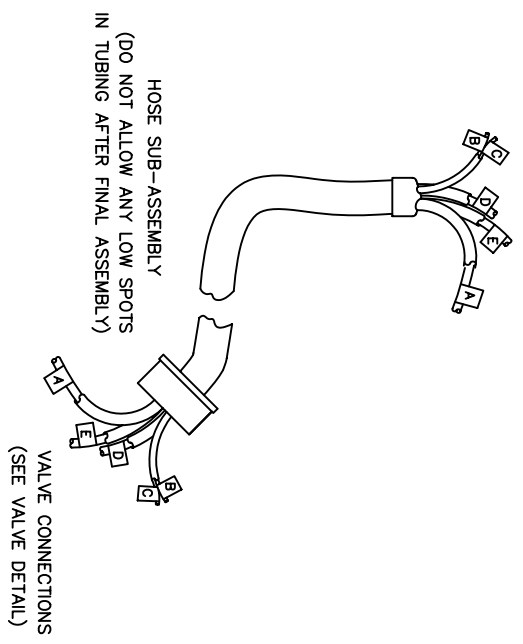
FOR NO. REVISIONS BY DATE APPROVED: []
 ECN: 3878
 DATE: 02/21/06
 HAWSON: []
 HAWSON: []
 HAWSON: []



WITH 6519FR VALVE ASSEMBLY
 SEE SHEET 4 OF 4 FOR DETAILS

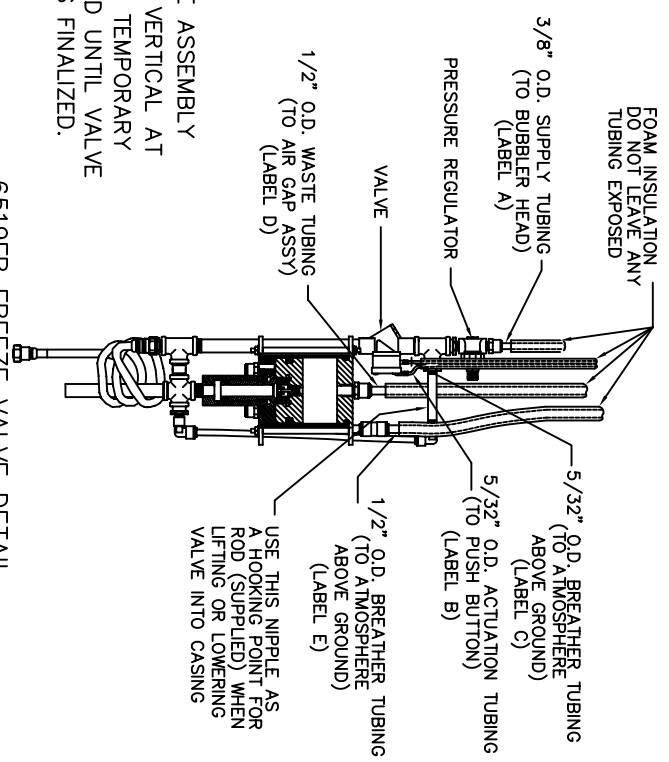
THIS DOCUMENT IS TRUE AND CORRECT AT TIME OF PUBLICATION. CONTINUED PRODUCT IMPROVEMENTS MAKE SPECIFICATIONS AND MEASUREMENTS SUBJECT TO CHANGE WITHOUT NOTICE.

©2006 Haws Corporation - All Rights Reserved HAWS® and other trademarks used in these materials are the exclusive property of Haws Corporation.

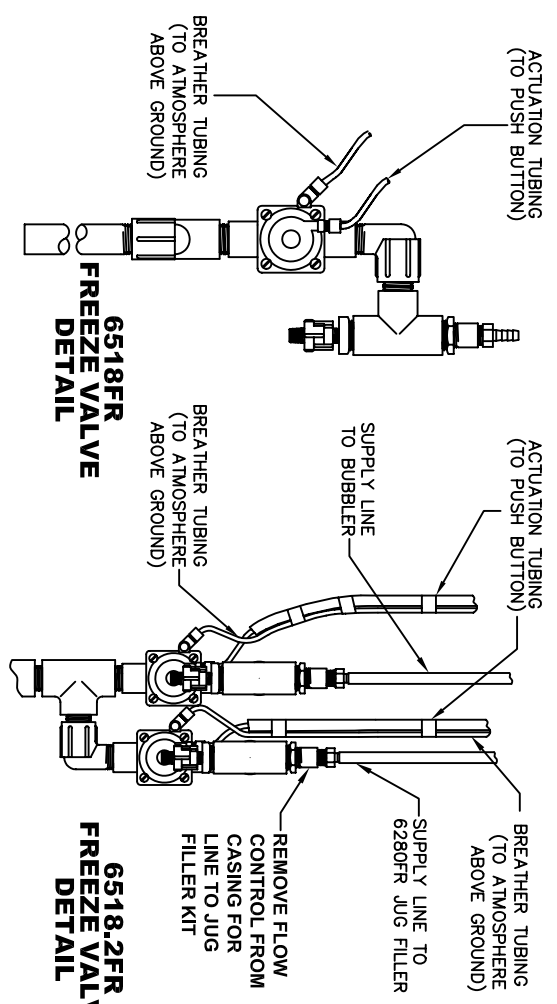


FOUNTAIN CONNECTIONS
(FOLLOW INSTRUCTIONS ON LABELS)

CAUTION: VALVE ASSEMBLY MUST BE KEPT VERTICAL AT ALL TIMES. USE TEMPORARY STAND PROVIDED UNTIL VALVE INSTALLATION IS FINALIZED.

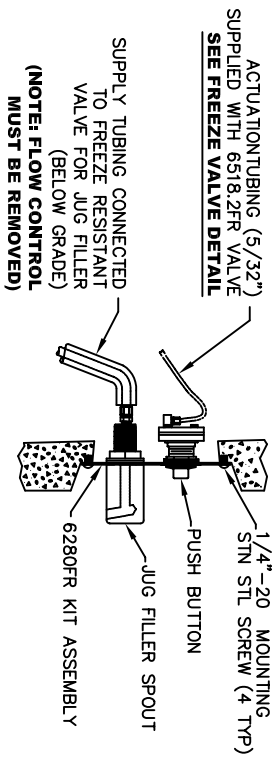


6519FR FREEZE VALVE DETAIL
(3 WAY DIVIDER W/TUBING AT BASE NOT SHOWN FOR CLARITY)



6518FR FREEZE VALVE DETAIL

6518.2FR FREEZE VALVE DETAIL



6280FR JUG FILLER KIT DETAIL

Haws Corporation

INFO FAX : 1-888-FAX-HAWS (1-888-329-4297)
 1455 Kiappa Ln, Sparks, NY 13843
 Phone: 775-359-4712 Fax: 775-359-7424
 Haws Ag Building 3 CH-3401 Burgdorf, Switzerland and
 Haws King Pte Ltd 74 Sungai Kodut Loop Singapore 729531
 e-MAIL: Haws@hawsco.com website: www.hawsco.com

REG. NO. 02/21/06 DATE: 02/21/06 APPROVER:	MODEL(S): 3177FR/3177 6280FR/3177 6519FR INFO FAX DOC #: 2317757/23177628/23177651	PART NO. 19205A00 QTY 5 SIZE A
--	--	--------------------------------------