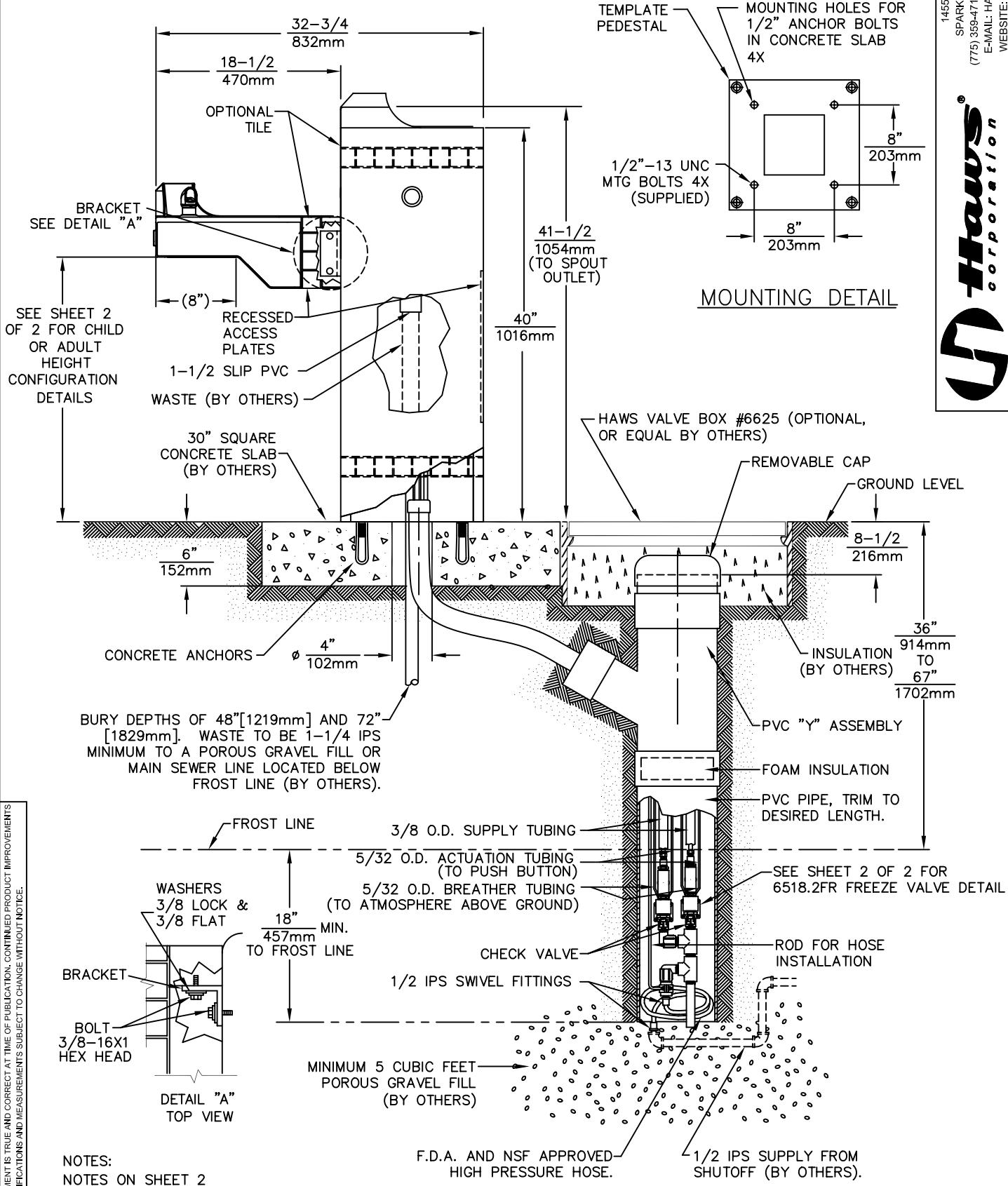


THIS DOCUMENT IS TRUE AND CORRECT AT TIME OF PUBLICATION. CONTINUED PRODUCT IMPROVEMENTS MAKE SPECIFICATIONS AND MEASUREMENTS SUBJECT TO CHANGE WITHOUT NOTICE.



1455 KLEPPE LANE
 SPARKS, NEVADA 89431
 (775) 359-4712 FAX (775) 359-7424
 E-MAIL: HAWS@HAWS.CO.COM
 WEBSITE: WWW.HAWS.CO.COM

REV.:	13
DATE:	09/28/02
BY:	CJL
CHKD:	BW
ECN:	4202
MODEL(S):	3150FR
INFO FAX DOC #:	2315037
SCALE:	1:1
DRAWING TYPE:	INSTALLATION/FABRICATION
SHEET:	1 OF 2

NOTES:
 NOTES ON SHEET 2

F.D.A. AND NSF APPROVED
 HIGH PRESSURE HOSE.

1/2 IPS SUPPLY FROM
 SHUTOFF (BY OTHERS).

©2009 Haws Corporation - All Rights Reserved HAWS® and other trademarks used in these materials are the exclusive property of Haws Corporation.

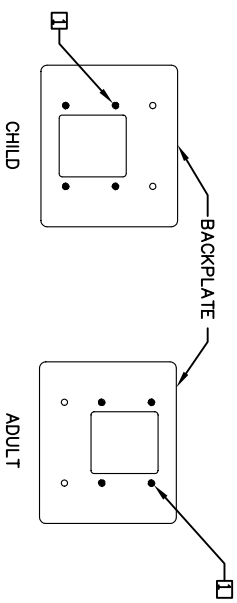
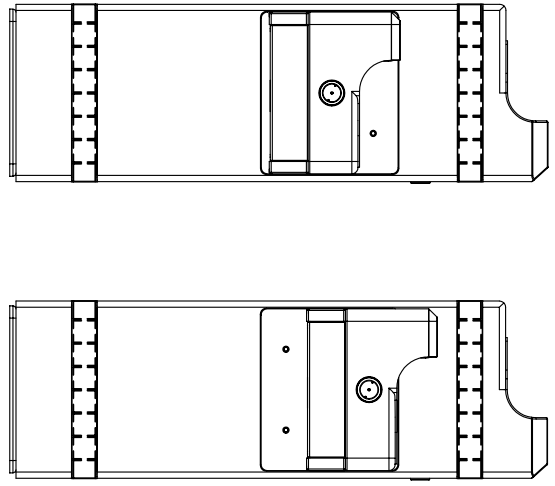
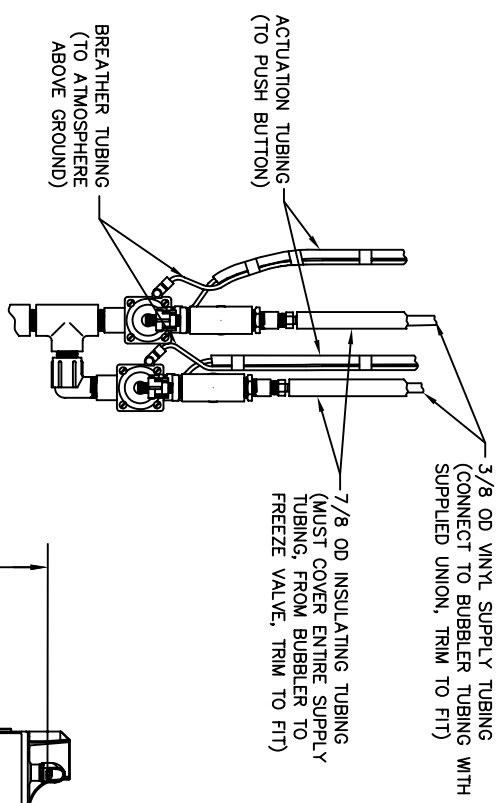


FIGURE 1

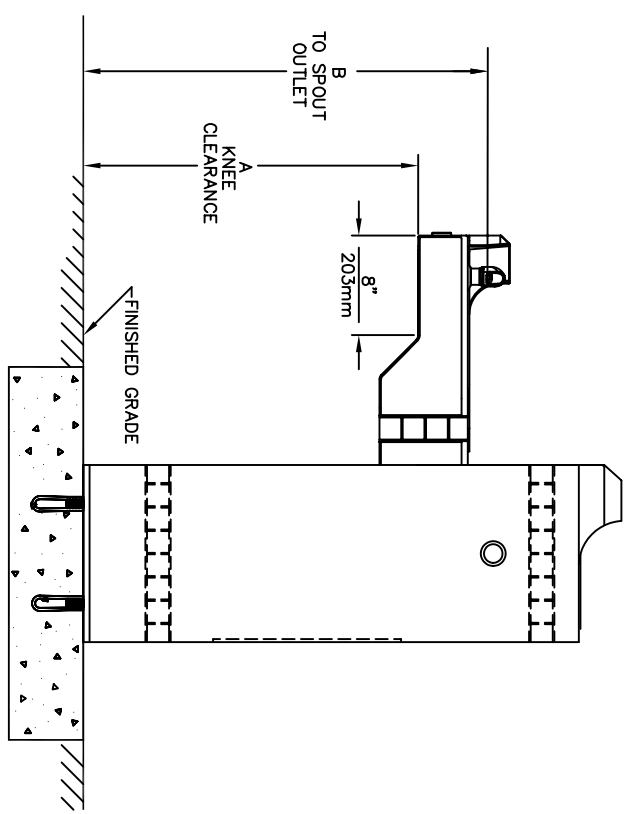
NOTES:
 [1] BASED ON DESIRED HEIGHT (CHILD OR ADULT) OF ARM, ORIENT BACKPLATE AS SHOWN IN FIGURE 1 AND USE APPROPRIATE SHADED HOLES.

[2] WASTE ASSEMBLY IS SUPPLIED DISASSEMBLED. THE SHORTER OF THE TWO PIECES IS FOR THE ARM DRAIN, AND MUST BE INSTALLED SO THAT ANY BEND IN THE FLEX TUBING WILL ALLOW WATER TO DRAIN COMPLETELY. THE LONGER IS FOR THE PEDESTAL DRAIN AND IS SUPPLIED AT THE LENGTH REQUIRED TO ASSEMBLE THE UNIT WITH THE ARM AT CHILD HEIGHT. IN ORDER TO ASSEMBLE AT ADULT HEIGHT, 3" MUST BE CUT FROM THE END OF THE FLEX TUBING PRIOR TO ASSEMBLY. TEES IS TO BE GLUED TO THE FLEX TUBING WASTE ARMS USING PVC PIPE CEMENT.

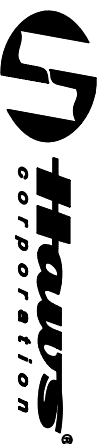
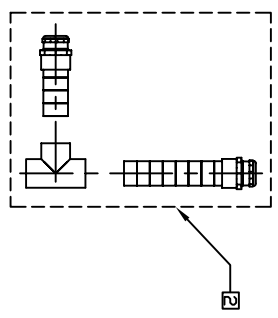
[3] INSULATION FOAM TUBING MUST NOT BE REMOVED



CHILD OR ADULT HEIGHT CONFIGURATION DETAILS



AVAILABLE ARM HEIGHTS			
DIM	ADULT ADA	CHILD ADA	
A	27" / 686mm	24" / 610mm	
B	32-3/4" / 832mm	29-3/4" / 756mm	



1455 KLEPPE LANE
 SPARKS, NEVADA 89431
 (775) 359-4712 FAX (775) 359-7424
 E-MAIL: HAWS@HAWS.CO.COM
 WEBSITE: WWW.HAWS.CO.COM

FORM NO. 10/2017	REV. 07/2017	MODEL(S) 3150FR	DATE 09/29/92	DATE 09/29/92	INFO FAX DOC # 2315037	INSTALLATION/EXHIBIT	DATE 09/29/92	REV. 07/2017	REV. 07/2017
ISSUE A	ISSUE 2	ISSUE 2	ISSUE 2	ISSUE 2	ISSUE 2	ISSUE 2	ISSUE 2	ISSUE 2	ISSUE 2