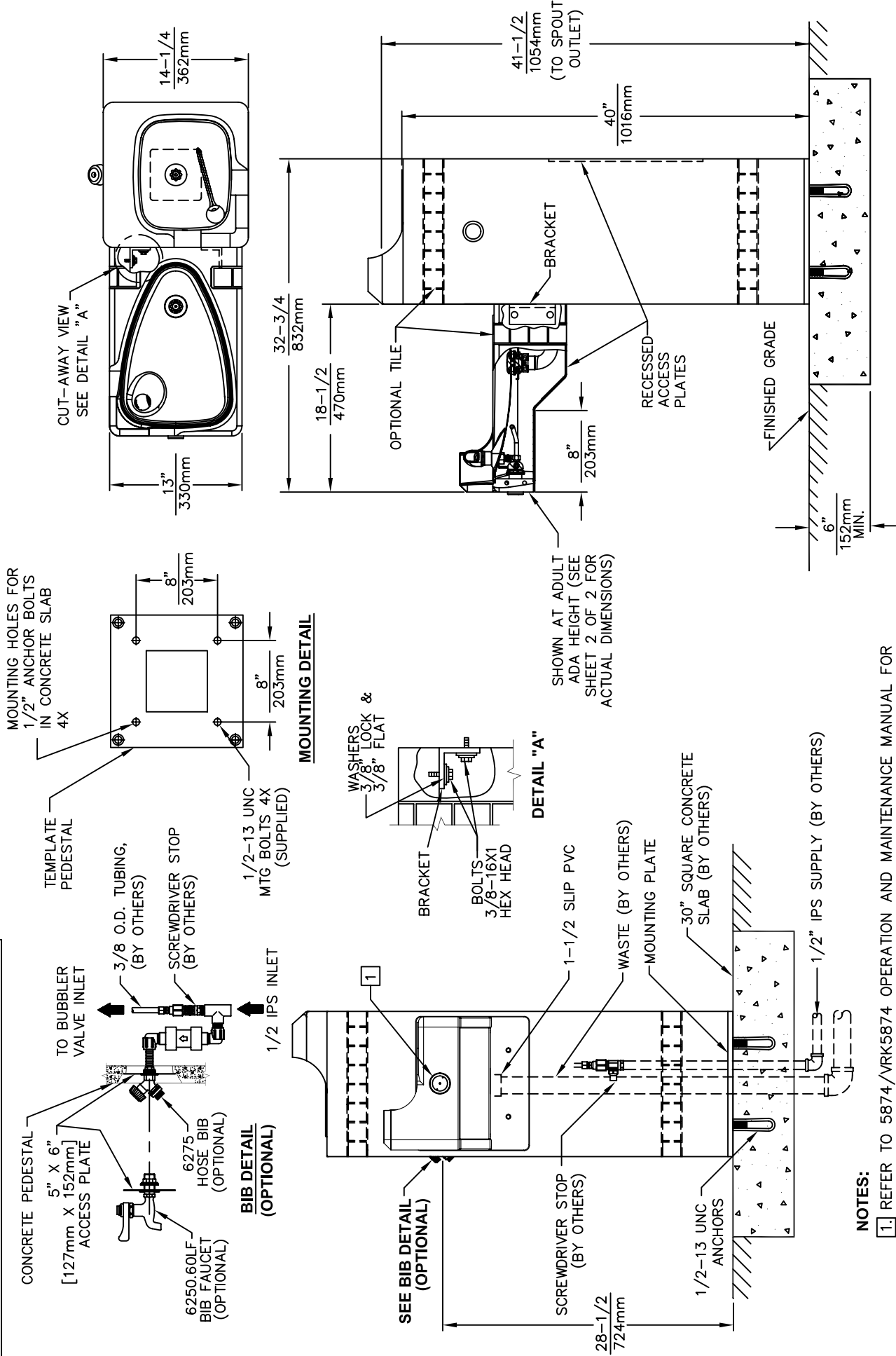


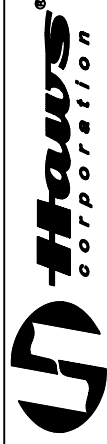
THIS DOCUMENT IS TRUE AND CORRECT AT TIME OF PUBLICATION. CONTINUED PRODUCT IMPROVEMENTS MAKE SPECIFICATIONS AND MEASUREMENTS SUBJECT TO CHANGE WITHOUT NOTICE.



NOTES:

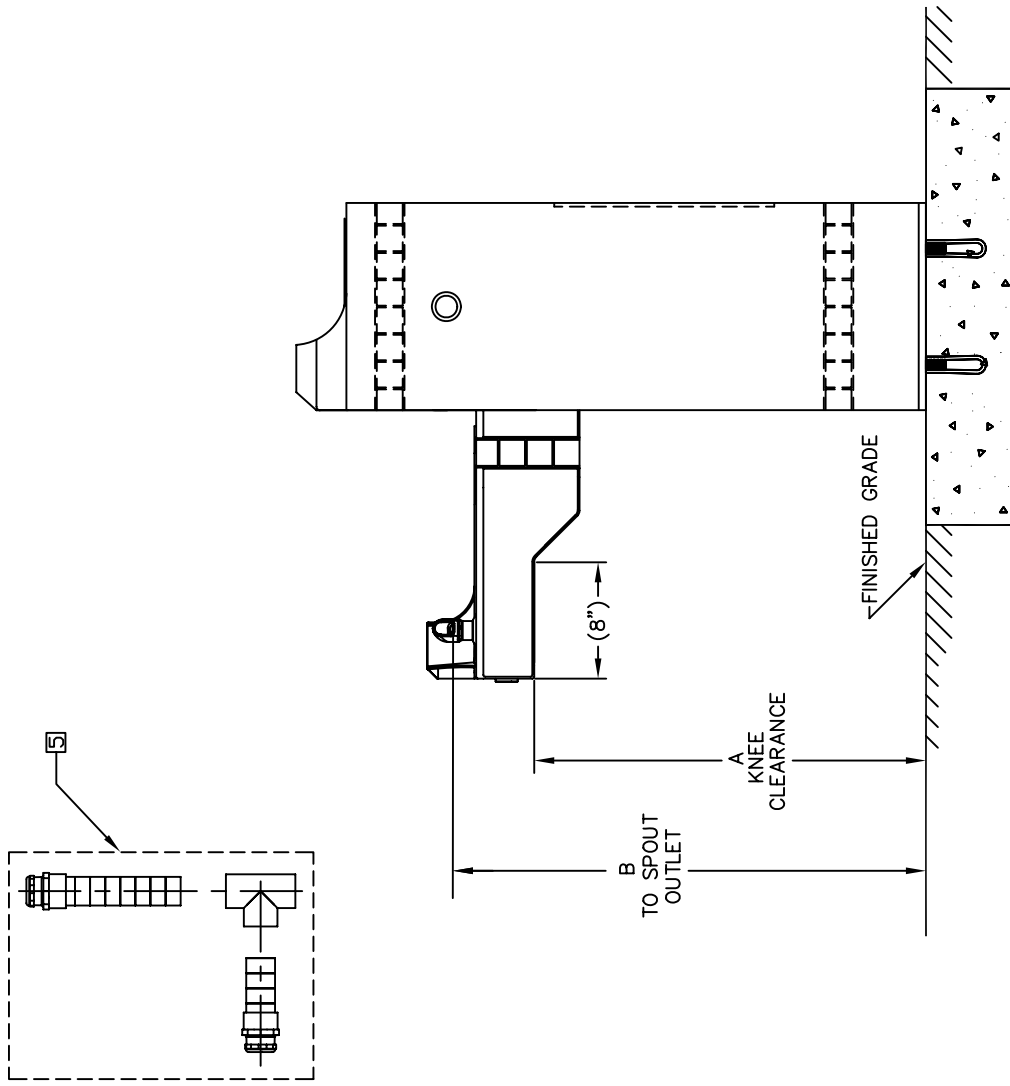
- REFER TO 5874/VRK5874 OPERATION AND MAINTENANCE MANUAL FOR PUSH BUTTON AND VALVE INSTALLATION/MAINTENANCE INSTRUCTIONS.
- PATENT NO. 353,739
- SIDE ARM IS ADJUSTABLE TO ACCOMMODATE EITHER CHILD OR ADULT HEIGHTS (SEE SHEET 2 OF 2 FOR DETAILS).

NOTES CONTINUED ON SHEET 2 OF 2.



1455 KLEPPE LANE
SPARKS, NEVADA 89431
(775) 359-4712 FAX (775) 359-7424
E-MAIL: HAWS@HAWS.CO.COM
WEBSITE: WWW.HAWS.CO.COM

REV:	19	DATE:	08/09	BY:	BJW
REV:	18	DATE:	08/09	BY:	BJW
REV:	17	DATE:	08/09	BY:	BJW
REV:	16	DATE:	08/09	BY:	BJW
REV:	15	DATE:	08/09	BY:	BJW
REV:	14	DATE:	08/09	BY:	BJW
REV:	13	DATE:	08/09	BY:	BJW
REV:	12	DATE:	08/09	BY:	BJW
REV:	11	DATE:	08/09	BY:	BJW
REV:	10	DATE:	08/09	BY:	BJW
REV:	9	DATE:	08/09	BY:	BJW
REV:	8	DATE:	08/09	BY:	BJW
REV:	7	DATE:	08/09	BY:	BJW
REV:	6	DATE:	08/09	BY:	BJW
REV:	5	DATE:	08/09	BY:	BJW
REV:	4	DATE:	08/09	BY:	BJW
REV:	3	DATE:	08/09	BY:	BJW
REV:	2	DATE:	08/09	BY:	BJW
REV:	1	DATE:	08/09	BY:	BJW



AVAILABLE ARM HEIGHTS	
DIM	CHILD ADA
A	27" / 686mm
B	32-3/4" / 832mm

FIGURE 1

- NOTES:**
- [4] BASED ON DESIRED HEIGHT (CHILD OR ADULT) OF ARM, ORIENT BACKPLATE AS SHOWN IN FIGURE 1 AND USE APPROPRIATE SHADED HOLES.
 - [5] WASTE ASSEMBLY IS SUPPLIED DISASSEMBLED. THE SHORTER OF THE TWO PIECES IS FOR THE ARM DRAIN, AND MUST BE INSTALLED SO THAT ANY BEND IN THE FLEX TUBING WILL ALLOW WATER TO DRAIN COMPLETELY. THE LONGER IS FOR THE PEDESTAL DRAIN AND IS SUPPLIED AT THE LENGTH REQUIRED TO ASSEMBLE THE UNIT WITH THE ARM AT CHILD HEIGHT. IN ORDER TO ASSEMBLE AT ADULT HEIGHT, 3" MUST BE CUT FROM THE END OF THE FLEX TUBING PRIOR TO ASSEMBLY. TEE IS TO BE GLUED TO THE FLEX TUBING WASTE ARMS USING PVC PIPE CEMENT.



Haws Corporation
 1455 KLEPPE LANE
 SPARKS, NEVADA 89431
 (775) 359-4712 FAX (775) 359-7424
 E-MAIL: HAWS@HAWSCO.COM
 WEBSITE: WWW.HAWSCO.COM

ENR NO:	REV:	MODEL(S):	0002077070.D
DATE:	DATE:	INFO FAX DOC #:	23150
DATE:	DATE:	SCALE:	1:1
DATE:	DATE:	DRAWING TYPE:	INSTALLATION/BACK
DATE:	DATE:	SIZE:	A SHEET 2 OF 2