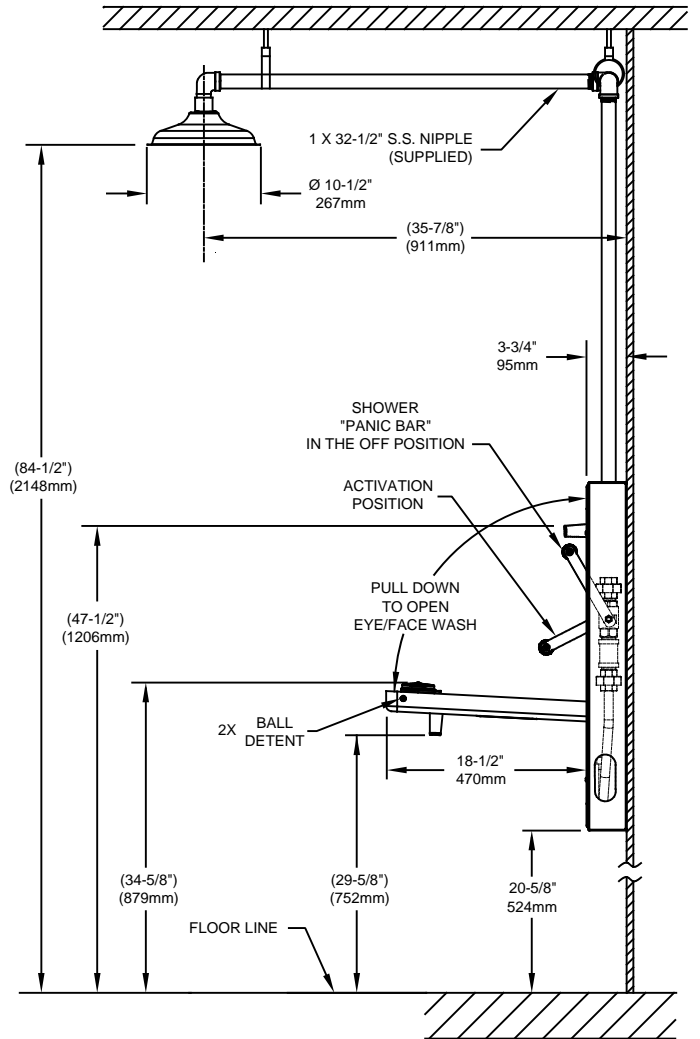
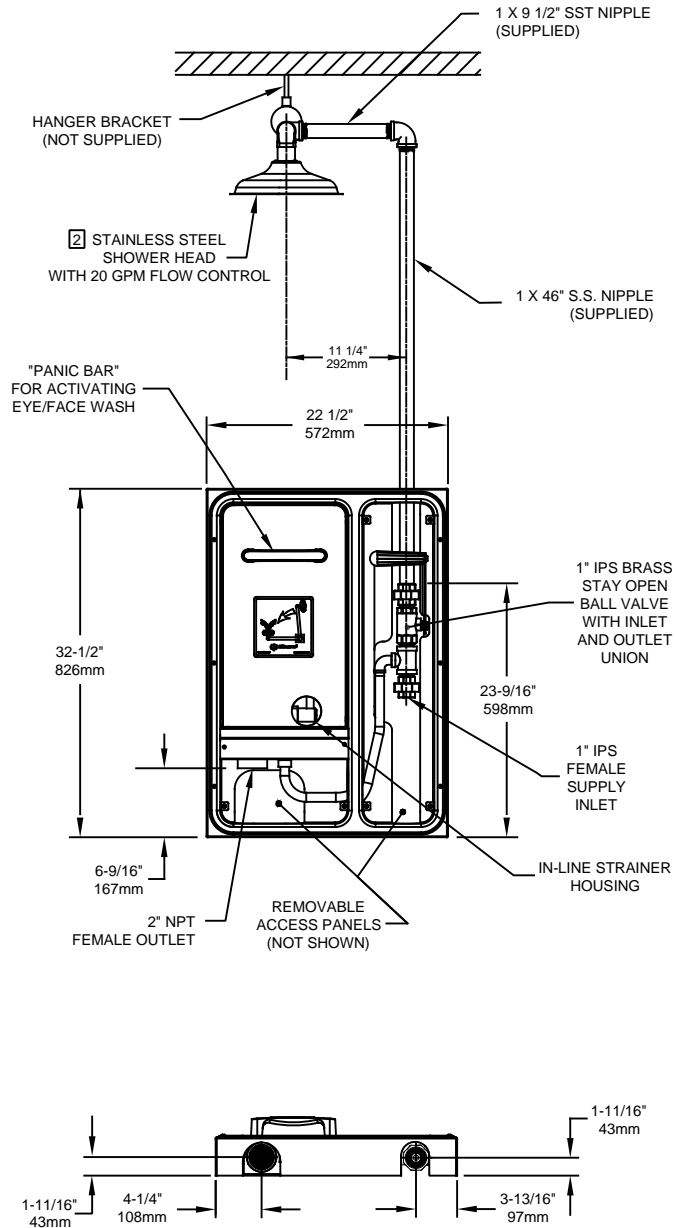


NOTES:

1. WHEN INSTALLING THIS UNIT, LOCAL, STATE OR FEDERAL CODES SHOULD BE ADHERED TO. WASTE CONNECTION MUST ADHERE TO LOCAL HEALTH AND PLUMBING CODES.
2. SHOWER HEAD MUST BE POSITIONED IN-LINE WITH EYE/FACEWASH HEAD TO ALLOW FOR SIMULTANEOUS USE BY THE SAME USER PER ANSI STANDARD Z358.1.
3. FLOW RATE FOR EYE/FACE WASH IS 3.7 GPM AND EXCEEDS ANSI STANDARD Z358.1.
4. DIMENSIONS MAY VARY BY  $\pm 1/2"$  [12.7mm].
- \* 5. MOUNTING HARDWARE NOT SUPPLIED.





1455 KLEPPE LANE  
SPARKS, NEVADA 89431  
(775) 359-4712 FAX (775) 359-7424  
E-MAIL: HAWS@HAWSCO.COM  
WEBSITE: WWW.HAWSCO.COM

ECN NO. 4290	REVISED PER ECN: 5162	BY: VWC	MODEL(S)	PART NUMBER
DRAWN: I. ROBERTS	DATE: 7/13/10	CHKD.: VWC	8356WCMS	0002080150.D
APPROVED: FV	DATE: 02/23/17	SCALE: 1/19		DRAWING TYPE: INSTALLATION
			SIZE: A	SHEET 1 OF 1