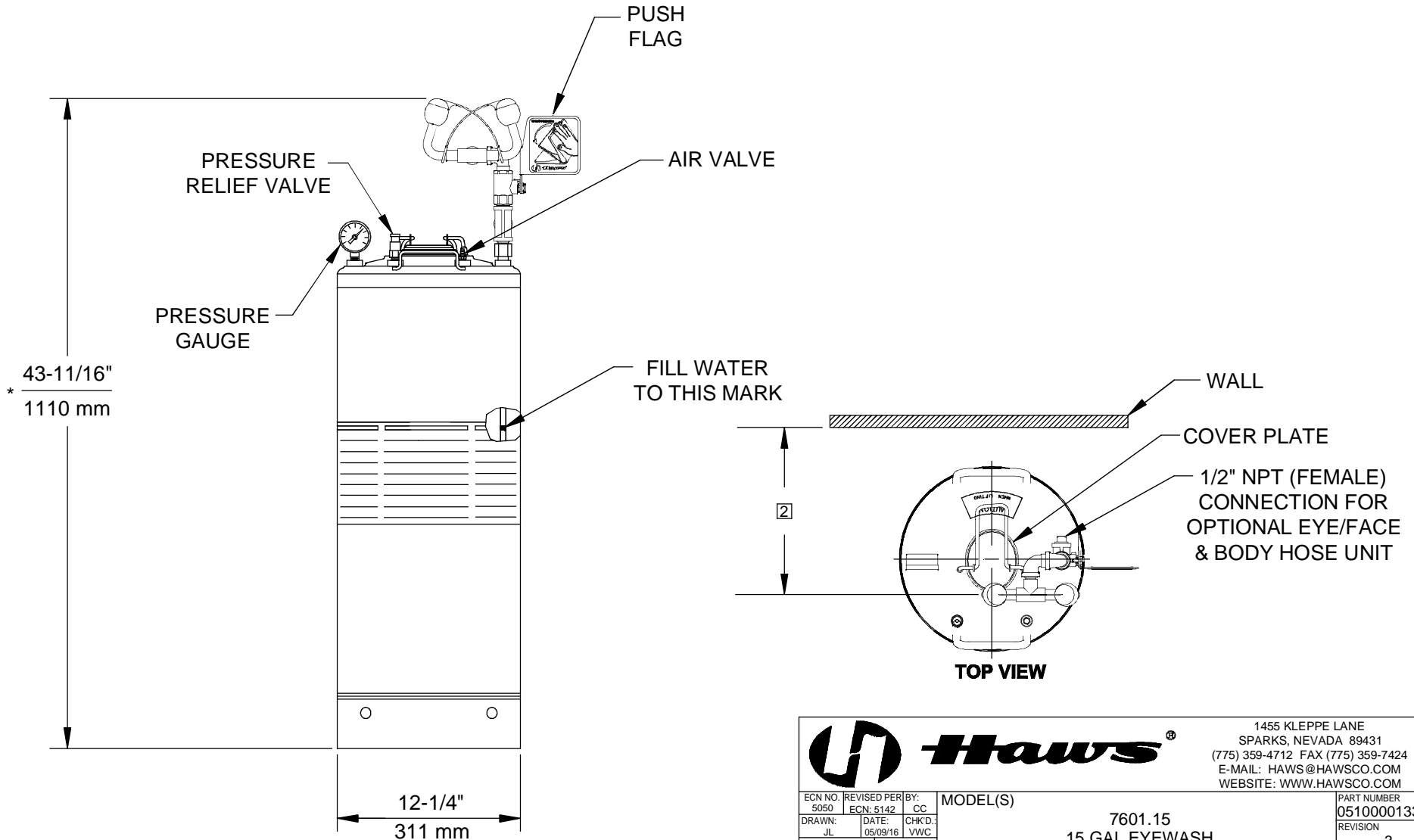


**NOTES:**

1. TO COMPLY WITH ANSI Z358.1-2014 FOR EMERGENCY EYEWASH OR EYEWASH:
  - UNIT SHALL BE INSTALLED IN ACCORDANCE WITH MANUFACTURER'S INSTRUCTIONS AND ACCEPTABLE PLUMBING PRACTICES.
  - EYE/FACE WASH SHALL BE POSITIONED SUCH THAT STREAMS ARE 15.3 CM (6 IN.) MINIMUM FROM WALL OR NEAREST OBSTRUCTION.
2. EYEWASH HEAD ASSEMBLY MUST BE PARALLEL TO WALL OR OBSTRUCTION TO MEET CRITERIA STATED IN ACCORDANCE TO NOTE 1.
- \*3. DIMENSIONS MAY VARY BY  $\pm 1/2"$  [12.7mm].
4. PRESSURIZE TO 100 PSI. REFILL IF PRESSURE < 95 PSI.



1455 KLEPPE LANE  
SPARKS, NEVADA 89431  
(775) 359-4712 FAX (775) 359-7424  
E-MAIL: HAWS@HAWS.CO.COM  
WEBSITE: WWW.HAWS.CO.COM

ECN NO. 5050	REVISED PER ECN: 5142	BY: CC	MODEL(S)	PART NUMBER
DRAWN: JL	DATE: 05/09/16	CHKD.: VWG	7601.15 15 GAL EYEWASH	0510000133.D
APPROVED: FV	DATE: 10/24/16	SCALE: 1:1	DRAWING TYPE: INSTALLATION	REVISION 3
			SIZE: A	SHEET 1 OF 1