



model 1920W

Vandal-Resistant White Powder-Coated Bottle filler

FEATURES & BENEFITS

PUSH BUTTON

With its patented stainless steel, push-button activated valve assembly which allows for front access stream adjustment as well as cartridge and strainer access, this bottle filler offers 100% lead free waterways. The valve works at an operating pressure range of 30 to 90 psi (2.1 to 6.2 bar).

LAMINAR FLOW.

Adjustable, splash-free, 1 gpm (3.78 L) laminar water flow

EFFICIENT & FLEXIBLE INSTALLATION

Unit is designed for retrofit or new construction applications. No drain required for mounting over existing drinking fountain.

DURABLE BUILD

Good for indoor or outdoor applications (in non-freezing areas). Made with 100% Stainless Steel for vandal resistance.

MOUNTING OPTIONS

Select from mounting plate and back panel models to complete installation. Unit can mount on various wall types.

CONSTRUCTION

Unit is made of 14 gauge Type 304 stainless steel with a white painted finish that resists stains and corrosion, and has soft rounded corners. Unit features vandal-resistant bottom plate and dispensing nozzle.

VANDAL-RESISTANT

The push button and bottom plate are locked in place, discouraging unwanted vandal tampering.



SPECIFICATIONS

Model 1920W wall mounted vandal-resistant bottle filler shall include 100% lead-free waterways, gloss white finish, stainless steel construction, 1 gpm (3.78 L) laminar flow, vandal-resistant push-button operated stainless steel valve with front-accessible cartridge and flow adjustment. It can be used as a stand-alone station, or mounted above the Haws® 1311 and 1501 drinking fountain models.

APPLICATIONS

This type of wall mounted bottle filler may be placed in settings such as schools and other locations in and around office buildings, or with existing fountain installations where the temperature remains above freezing. Haws manufactures drinking fountains, faucets and electric water coolers to be lead-free by all known definitions including NSF/ANSI/CAN 61-Section 9, NSF/ANSI/CAN 372, California Proposition 65, and the Federal Safe Drinking Water Act. Product is compliant to California Health and Safety Code 116875 (AB 1953-2006), and NSF/ANSI/CAN 61: Q ≤ 1.

OPTIONS

Mounting Plate: Model 6700 in-wall mounting plate for model 1920W.

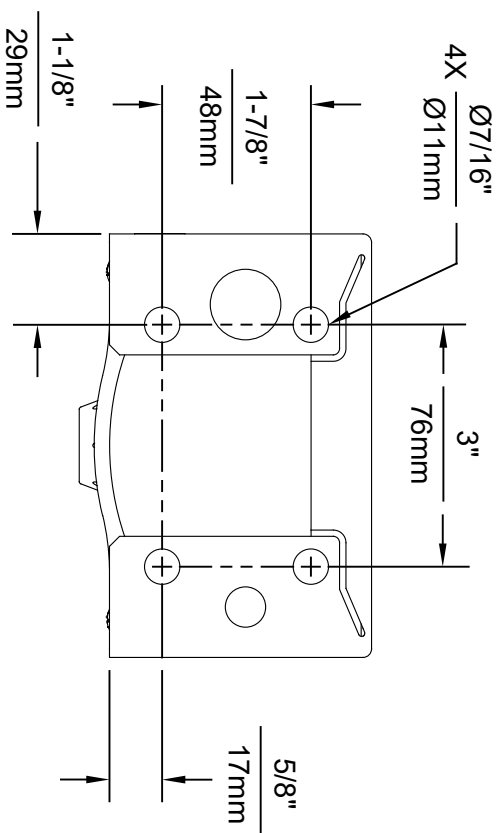
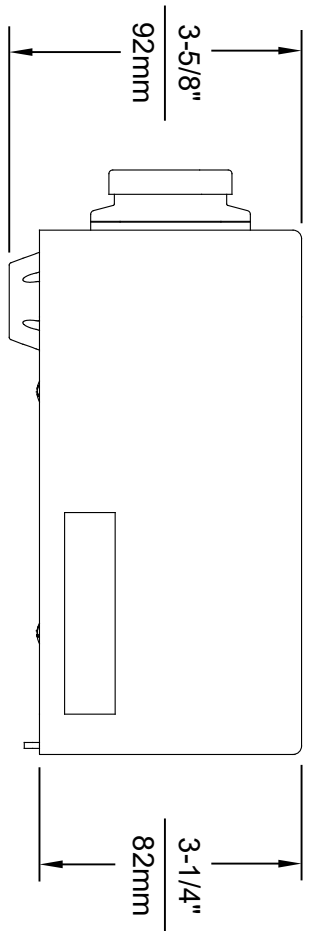
Mounting Plate: Model 6700R on-wall mounting plate for model 1920W.

Back Panel: Model BP8W white powder-coated stainless steel back panel for 1920W.

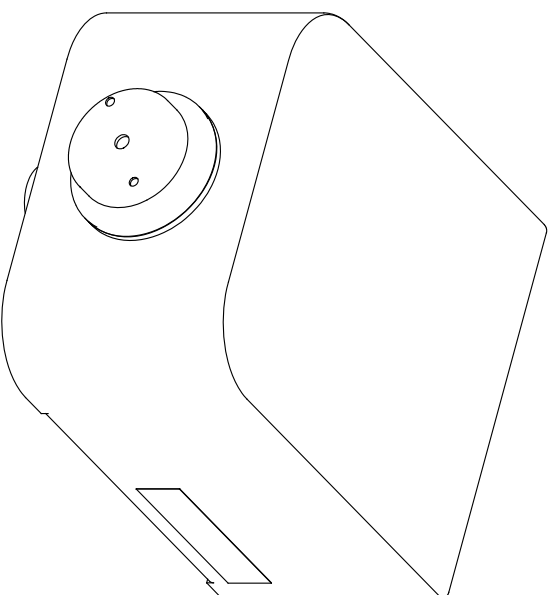
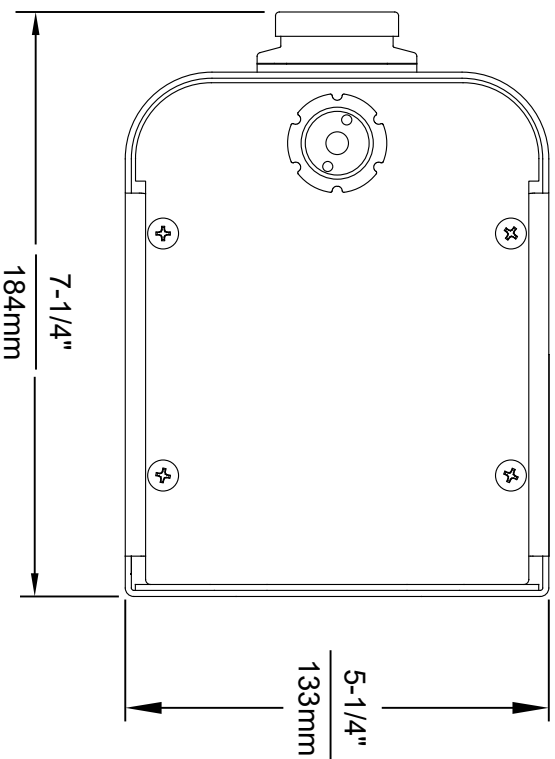
Back Panel: Model BP15W white powder-coated stainless steel back panel for 1920W.

For more information, visit www.hawsc.com or call (888) 640-4297.





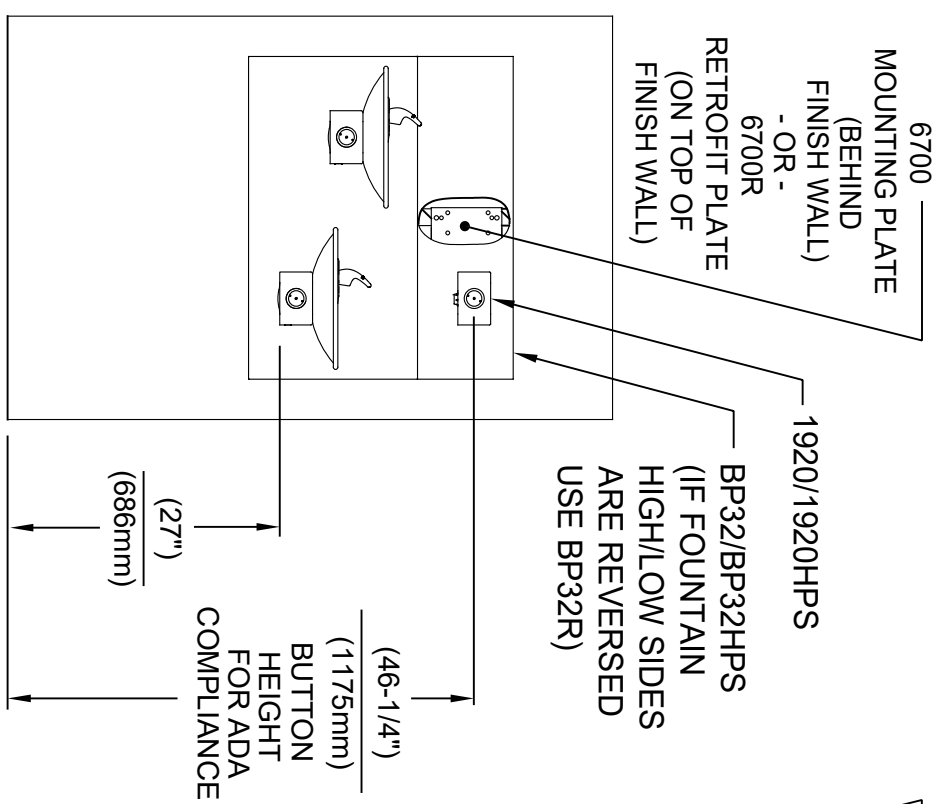
1920 MOUNTING HOLE LOCATIONS



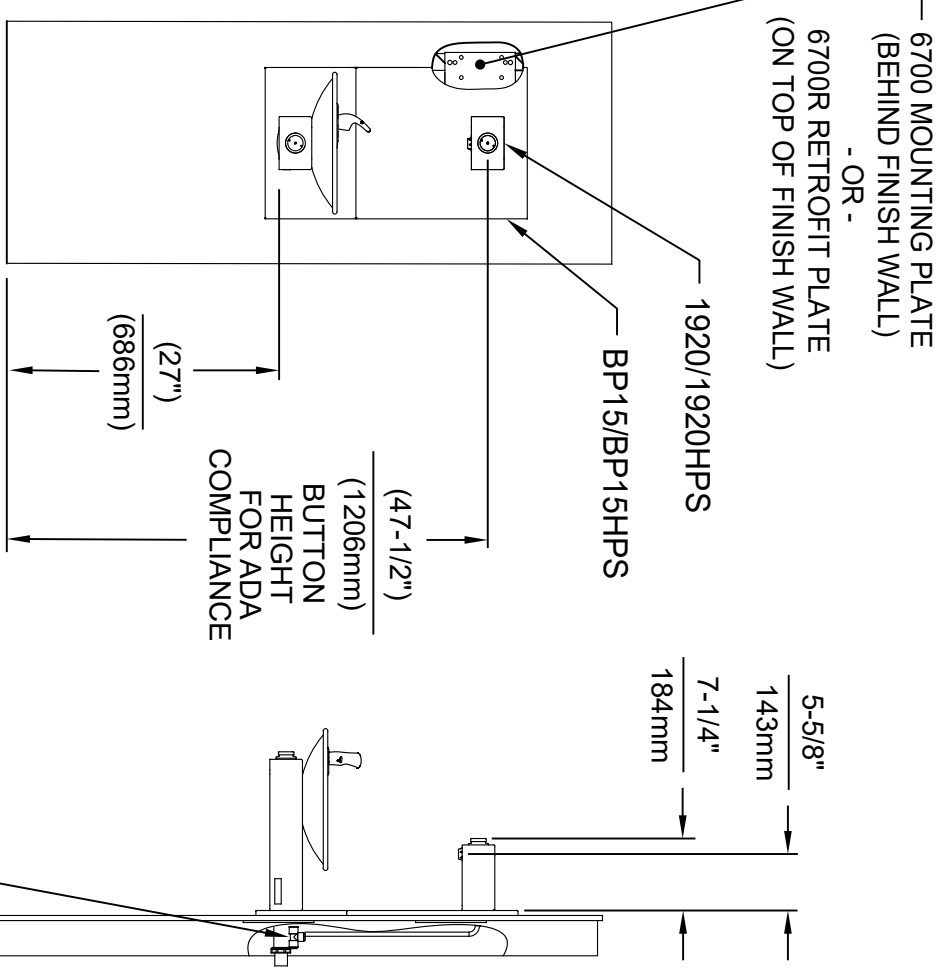
NOTES:

1. SEE SEPARATE INSTALLATION DRAWINGS FOR MOUNTING PLATES AND BACKPANELS
2. WHEN INSTALLING THIS UNIT, LOCAL, STATE OR FEDERAL CODES SHOULD BE ADHERED TO FOR INSTALLATION LOCATIONS, WASTE & SUPPLY REQUIREMENTS OTHER THAN SHOWN.

		Haws	
1459 KLEPPE LANE SPARKS, NEVADA, 89431 (775) 359-4712 FAX (775) 359-7424 E-MAIL: HAWS@HAWSCO.COM WEBSITE: WWW.HAWSCO.COM		MODEL(S) 1920/1920HPS/1920W	
ECN NO. REVISED PER BY:	5081	ECN. 5718	FV
DATE:	06/25/16	CHKD:	FV
APPROVED:	JL	DATE:	07/15/21
SCALE:	N/A	DRAWING TYPE:	INSTALLATION
SIZE:	A	SHEET:	1 OF 7
PART NUMBER	0510000490.D		
REVISION:	9		



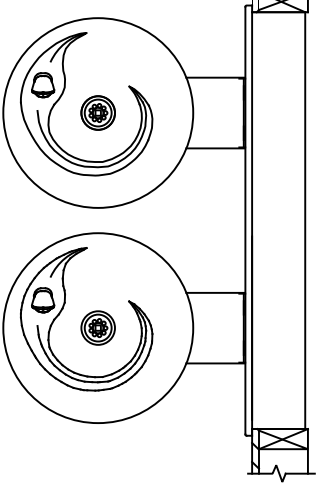
INSTALLATION ABOVE HAWS 1011 & H1011.8 SERIES



INSTALLATION ABOVE HAWS 1001 & H1001.8 SERIES

* IF YOUR FOUNTAIN IS THIS STYLE USE THESE DIMENSIONS

1. SEE SEPARATE INSTALLATION DRAWINGS FOR MOUNTING PLATES AND BACKPANELS
2. WHEN INSTALLING THIS UNIT, LOCAL, STATE OR FEDERAL CODES SHOULD BE ADHERED TO FOR INSTALLATION LOCATIONS, WASTE & SUPPLY REQUIREMENTS OTHER THAN SHOWN.

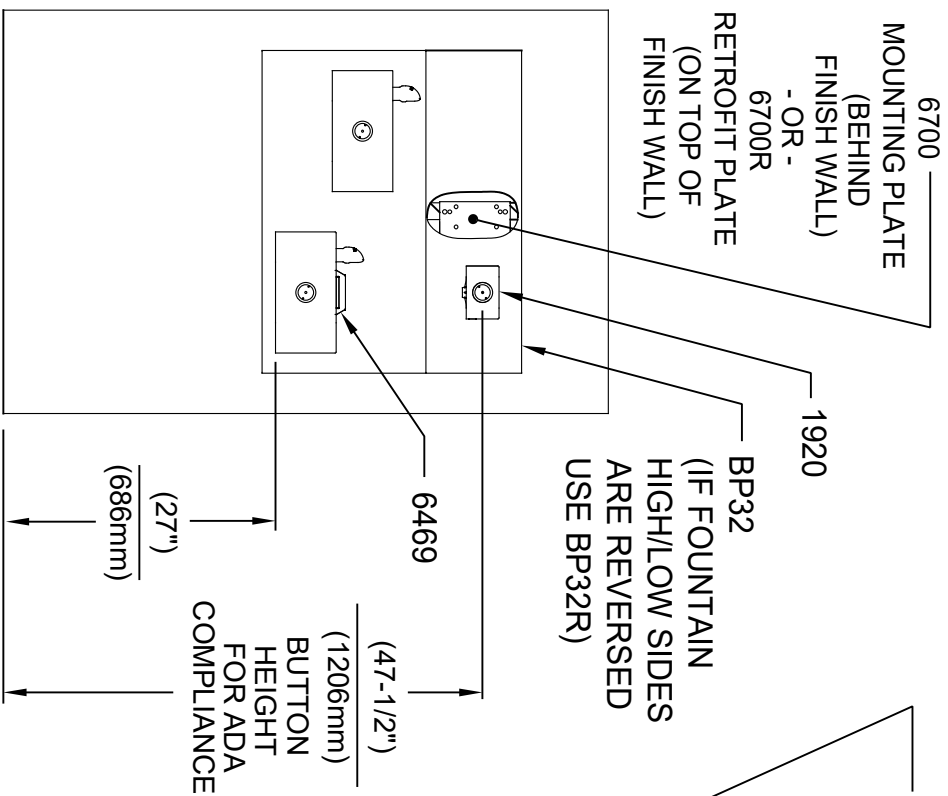


3/8" O.D. SUPPLY TUBING AND 3/8" O.D. PUSH-IN TEE SUPPLIED. (CONNECT TO FOUNTAIN SUPPLY LINE)

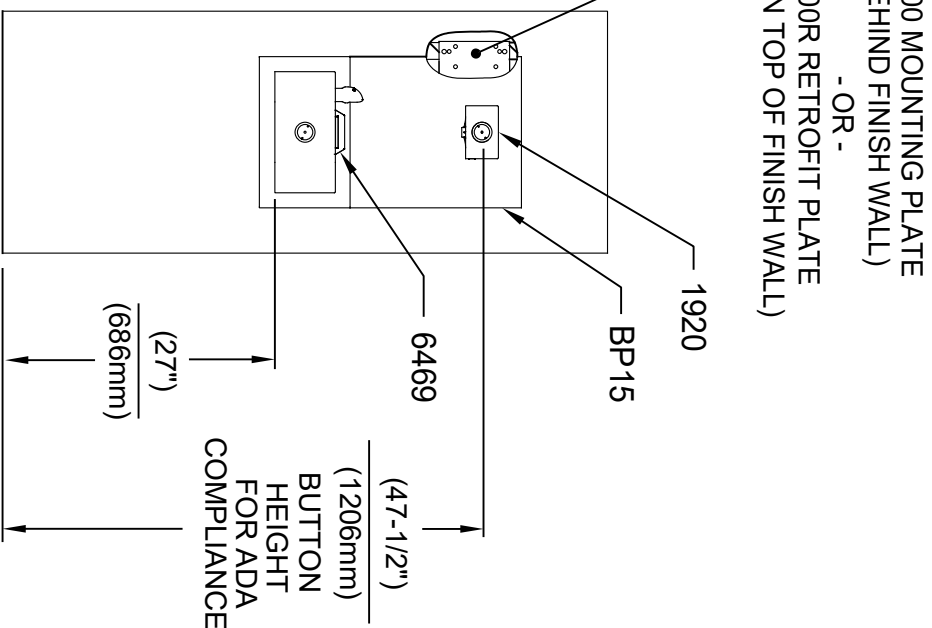
Haws

1459 KLEPPE LANE
SPARKS, NEVADA 89431
(775) 359-4712 FAX (775) 359-7424
E-MAIL: HAWS@HAWSCO.COM
WEBSITE: WWW.HAWSCO.COM

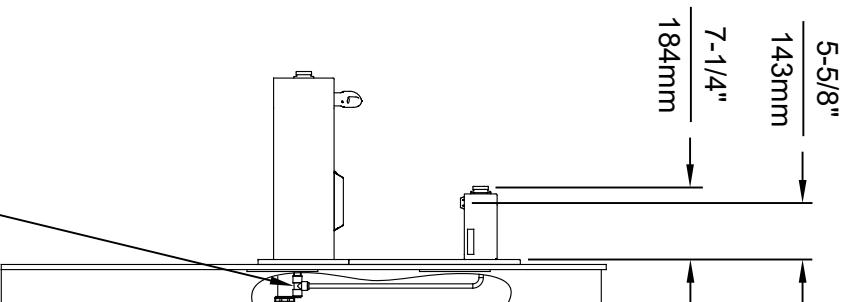
ECN NO. REVISED PER BY:	MODEL(S)
5081 ECN: 5718 EV	1920/1920HPS/1920W
DATE: 01/20/17	
CHKD: EV	
DATE: 07/15/21	
APPROVED: JL	
SCALE: N/A	DRAWING TYPE: INSTALLATION
SHEET: 2 OF 7	
PART NUMBER: 0510000490.D	REVISION: 9



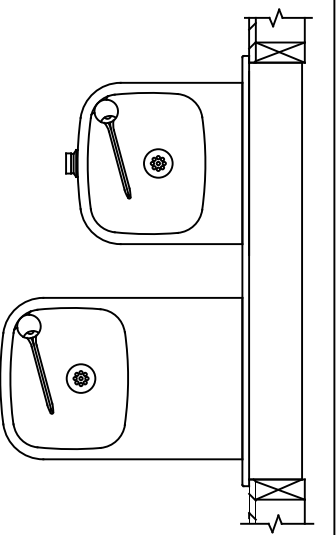
INSTALLATION ABOVE HAWS 1119 & H1119.8 SERIES



INSTALLATION ABOVE HAWS 1109 & H1109.8 SERIES

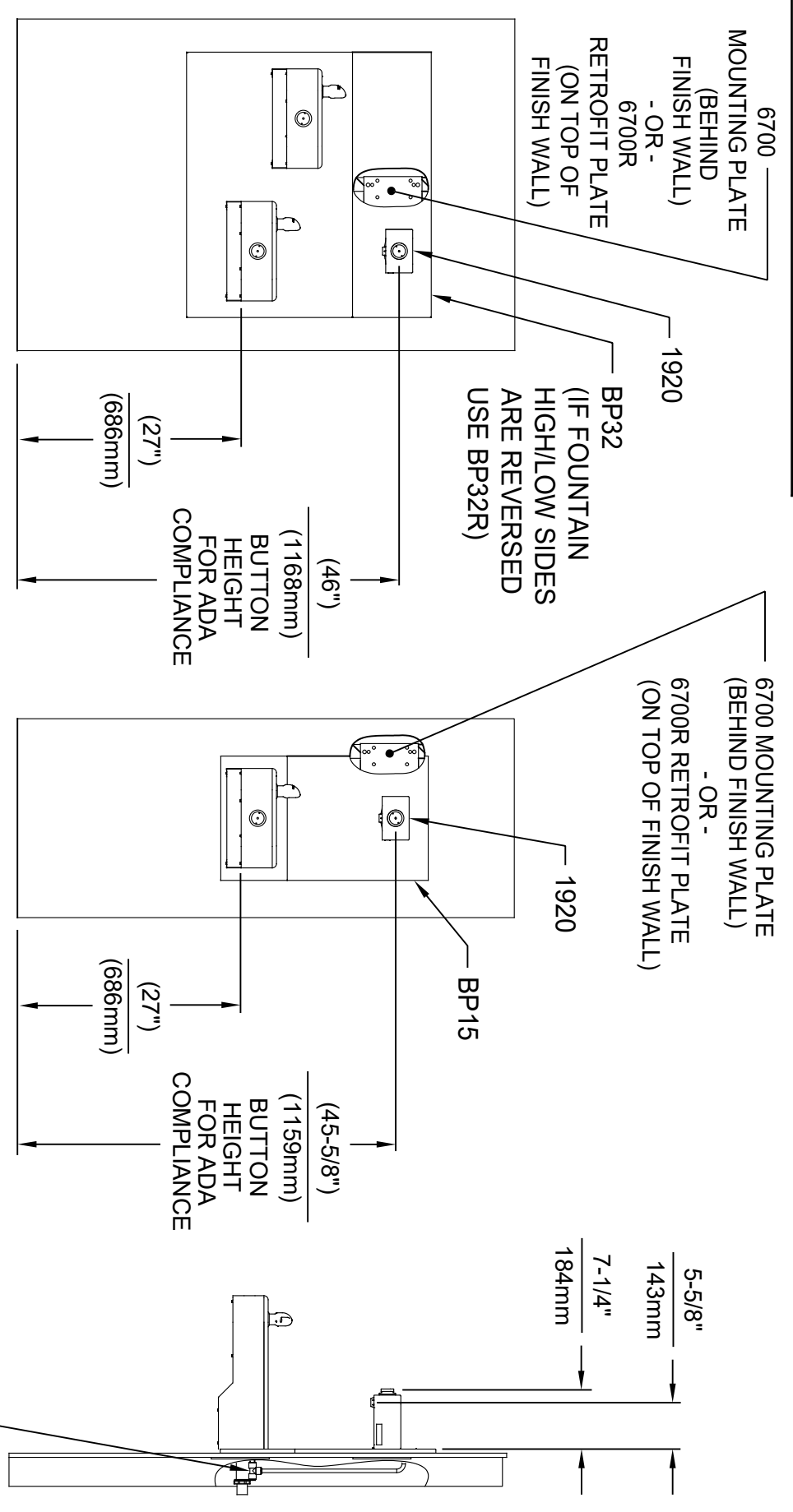


- * IF YOUR FOUNTAIN IS THIS STYLE USE THESE DIMENSIONS
1. SEE SEPARATE INSTALLATION DRAWINGS FOR MOUNTING PLATES, BACKPANELS & DRIP TRAY
 2. WHEN INSTALLING THIS UNIT, LOCAL, STATE OR FEDERAL CODES SHOULD BE ADHERED TO FOR INSTALLATION LOCATIONS, WASTE & SUPPLY REQUIREMENTS OTHER THAN SHOWN.



1459 KLEPPE LANE
SPARKS, NEVADA 89431
(775) 359-4712 FAX (775) 359-7424
E-MAIL: HAWS@HAWSCO.COM
WEBSITE: WWW.HAWSCO.COM

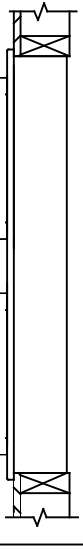
ECN NO. REVISED PER BY:	MODEL(S)	PART NUMBER
5081		0510000490.D
DATE:	DATE:	REVISION:
01/20/17	07/15/21	9
CHKD:	SCALE:	SHEET:
EV	N/A	3 OF 7
APPROVED:	INSTALLATION:	
JL		



INSTALLATION ABOVE HAWS 1117L, H1117.8 & H1117LN.8

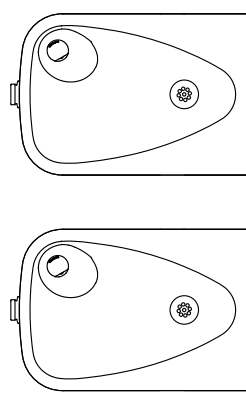
INSTALLATION ABOVE HAWS 1107L & H1107.8 SERIES

* IF YOUR FOUNTAIN IS THIS STYLE USE THESE DIMENSIONS



1. SEE SEPARATE INSTALLATION DRAWINGS FOR MOUNTING PLATES AND BACKPANELS

2. WHEN INSTALLING THIS UNIT, LOCAL, STATE OR FEDERAL CODES SHOULD BE ADHERED TO FOR INSTALLATION LOCATIONS, WASTE & SUPPLY REQUIREMENTS OTHER THAN SHOWN.



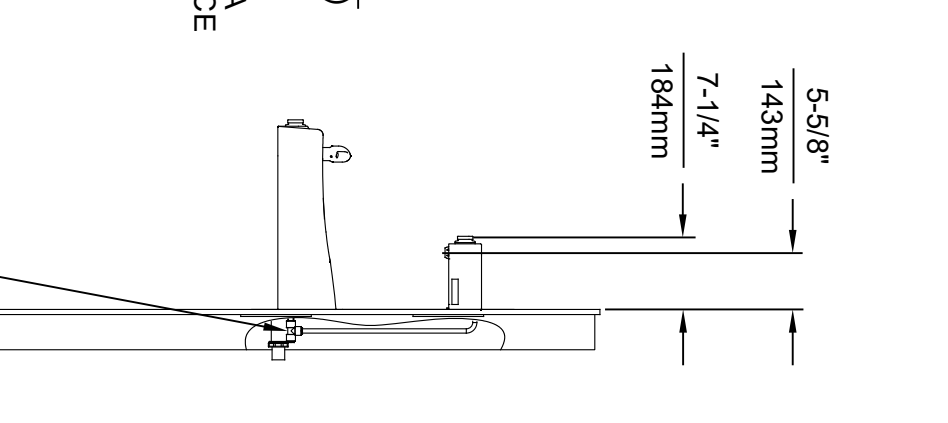
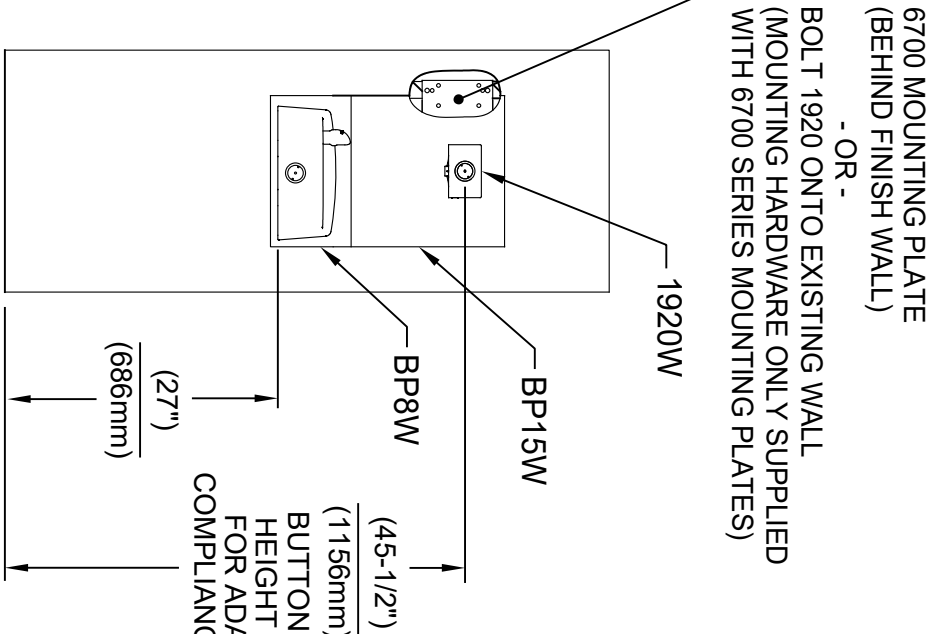
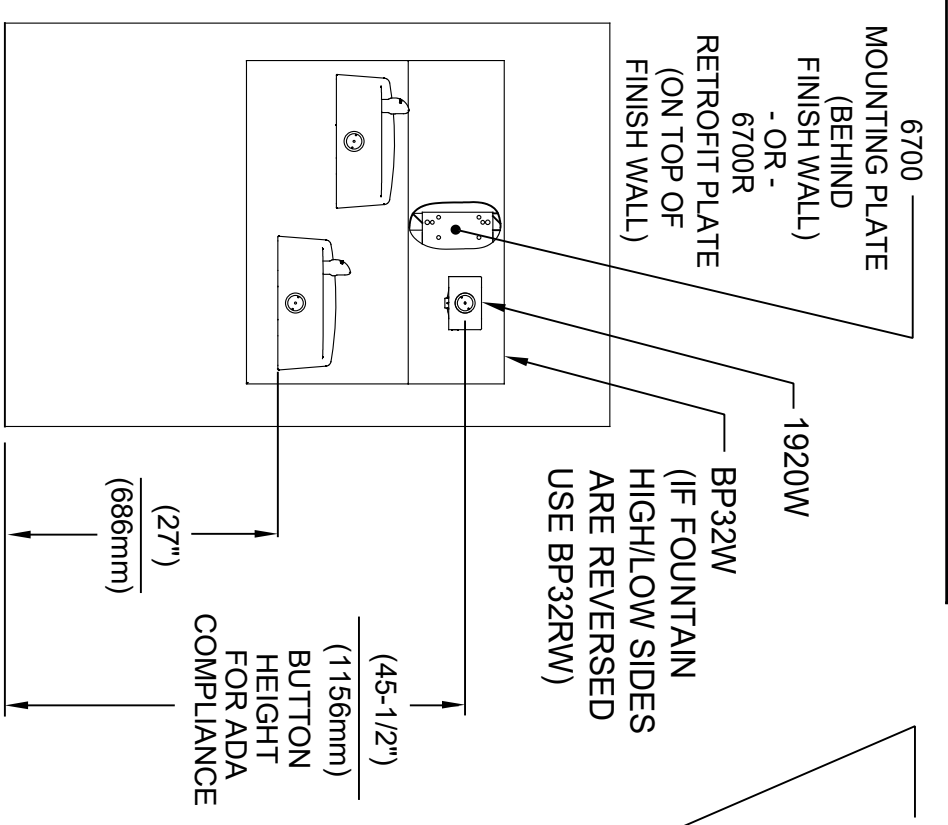
3/8" O.D. SUPPLY TUBING AND 3/8" O.D. PUSH-IN TEE SUPPLIED. (CONNECT TO FOUNTAIN SUPPLY LINE)



Haws

1456 KLEPPE LANE
SPARKS, NEVADA, 89431
(775) 359-4712 FAX (775) 359-7424
E-MAIL: HAWS@HAWSCO.COM
WEBSITE: WWW.HAWSCO.COM

ECN NO. REVISED PER BY:	MODEL(S)	1920/1920HPS/1920W
5081	DATE:	01/20/17
MD	CHK'D:	EV
APPROVED:	DATE:	07/15/21
SCALE:	N/A	DRAWING TYPE:
INSTALLATION:	SIZE:	A
SHEET:	4	OF 7
PART NUMBER:	0510000490.D	REVISION:
9		

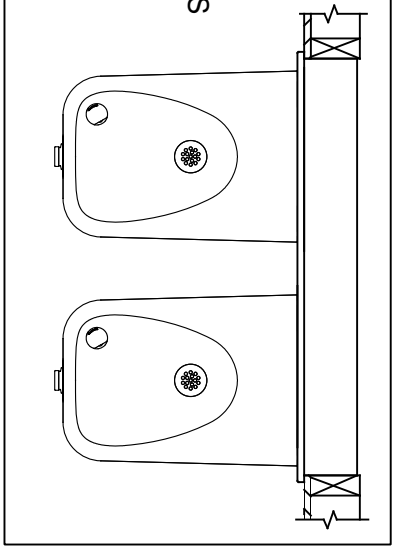


INSTALLATION ABOVE HAWS 1501

INSTALLATION ABOVE HAWS 1311

* IF YOUR FOUNTAIN IS THIS STYLE USE THESE DIMENSIONS

1. SEE SEPERATE INSTALLATION DRAWINGS FOR MOUNTING PLATES AND BACKPANELS
2. WHEN INSTALLING THIS UNIT, LOCAL, STATE OR FEDERAL CODES SHOULD BE ADHERED TO FOR INSTALLATION LOCATIONS, WASTE & SUPPLY REQUIREMENTS OTHER THAN SHOWN.

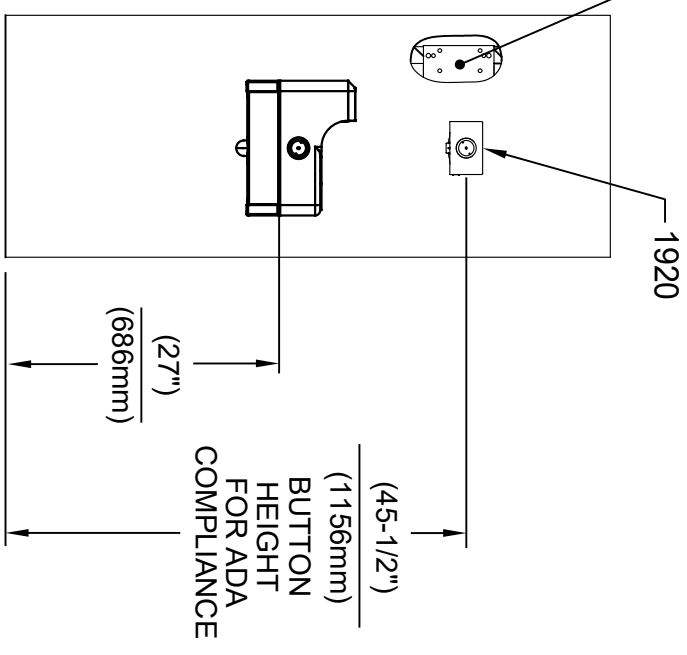


3/8" O.D. SUPPLY TUBING AND 3/8" O.D. PUSH-IN TEE SUPPLIED. (CONNECT TO FOUNTAIN SUPPLY LINE)

1456 KLEPPE LANE
SPARKS, NEVADA, 89431
(775) 359-4712 FAX (775) 359-7424
E-MAIL: HAWS@HAWSCO.COM
WEBSITE: WWW.HAWSCO.COM

ECN NO. REVISED PER BY:	MODEL(S)
5081	1920/1920HPS/1920W
DATE:	
02/13/17	
CHK'D:	
EV	
APPROVED:	SCALE: N/A DRAWING TYPE: INSTALLATION
JL	SIZE: A SHEET 5 OF 7
	REVISION: 9
	PART NUMBER: 0510000490.D

6700 MOUNTING PLATE
(BEHIND FINISH WALL)
- OR -
BOLT 1920 ONTO EXISTING WALL
(MOUNTING HARDWARE ONLY SUPPLIED
WITH 6700 SERIES MOUNTING PLATES)

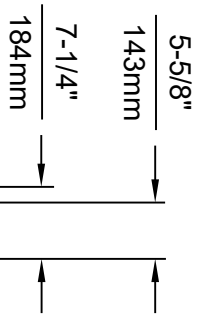


INSTALLATION ABOVE HAWS 1047

* IF YOUR FOUNTAIN IS THIS STYLE USE THESE DIMENSIONS



1. SEE SEPERATE INSTALLATION DRAWINGS FOR MOUNTING PLATES AND BACKPANELS
2. WHEN INSTALLING THIS UNIT, LOCAL, STATE OR FEDERAL CODES SHOULD BE ADHERED TO FOR INSTALLATION LOCATIONS, WASTE & SUPPLY REQUIREMENTS OTHER THAN SHOWN.



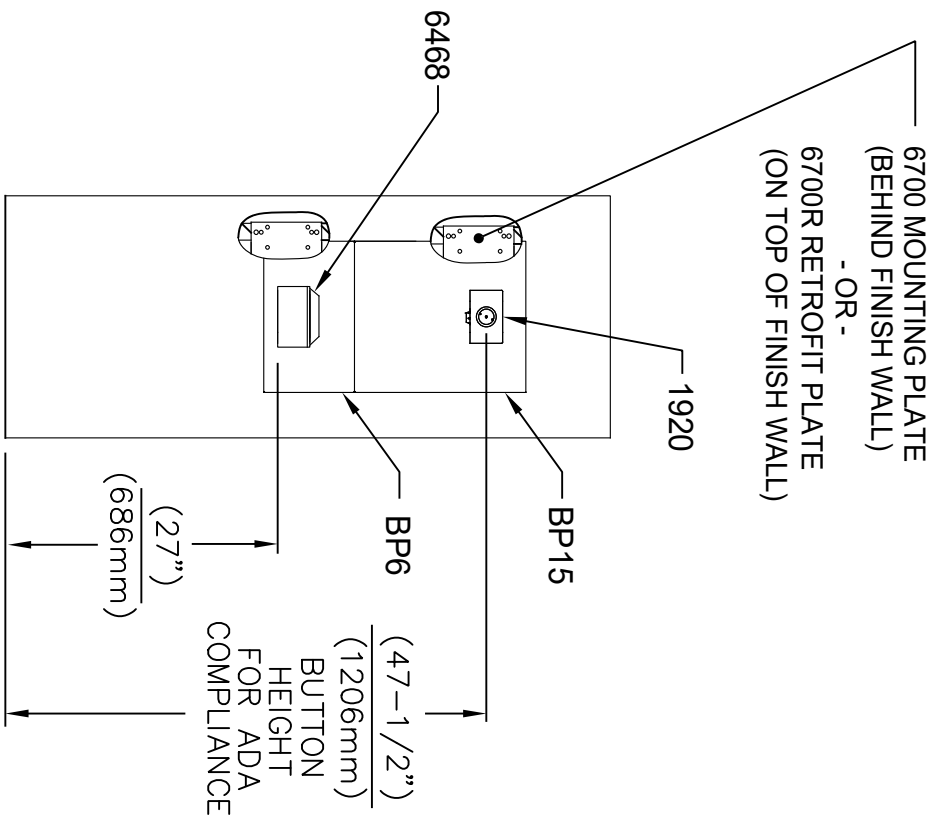
3/8" O.D. SUPPLY TUBING AND 3/8" O.D. PUSH-IN TEE SUPPLIED. (CONNECT TO FOUNTAIN SUPPLY LINE)



Haws

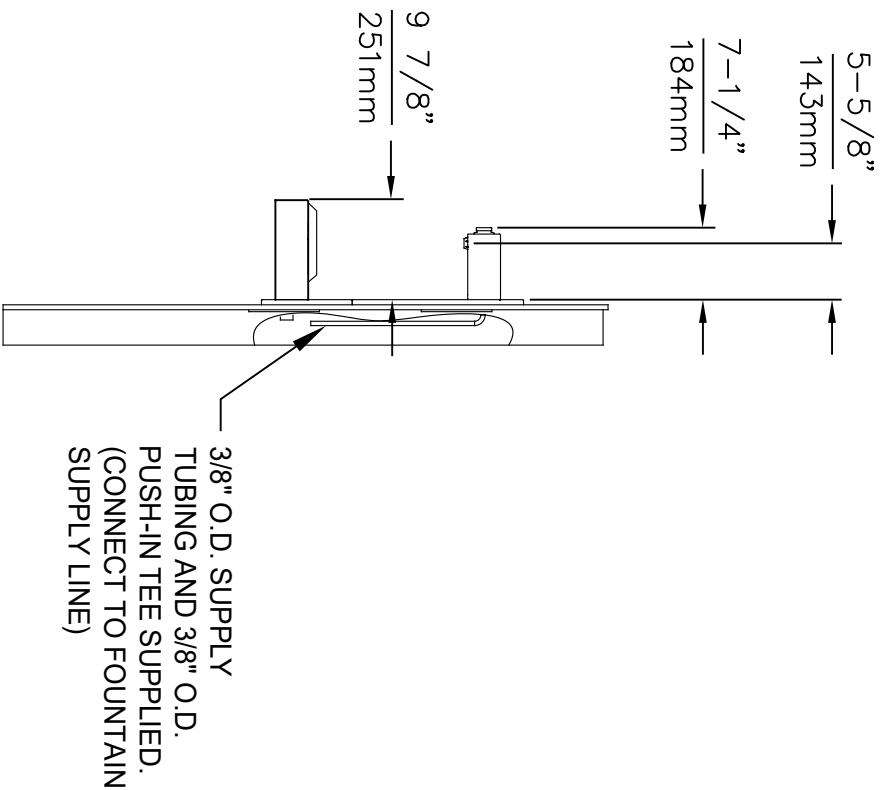
1459 KLEPPE LANE
SPARKS, NEVADA, 89431
(775) 359-4712 FAX (775) 359-7424
E-MAIL: HAWS@HAWSCO.COM
WEBSITE: WWW.HAWSCO.COM

ECN NO. REVISED PER BY:	MODEL(S)	PART NUMBER
5220 ECN: 5718 EV	1920/1920HPS/1920W	0510000490.D
DATE: 09/14/17	SCALE: N/A	REVISION: 9
CHKD: EV	DRAWING TYPE: INSTALLATION	SHEET 6 OF 7
APPROVED: JL	DATE: 07/15/21	



INSTALLATION ABOVE 6468

1. SEE SEPARATE INSTALLATION DRAWINGS FOR MOUNTING PLATES AND BACKPANELS
2. WHEN INSTALLING THIS UNIT, LOCAL, STATE OR FEDERAL CODES SHOULD BE ADHERED TO FOR INSTALLATION LOCATIONS, WASTE & SUPPLY REQUIREMENTS OTHER THAN SHOWN.



		Haws	
1456 KLEPPE LANE SPARKS, NEVADA, 89431 (775) 359-4712 FAX (775) 359-7424 E-MAIL: HAWS@HAWSCO.COM WEBSITE: WWW.HAWSCO.COM			
ECN NO. REVISED PER BY:	DATE:	MODEL(S)	SCALE:
5807	10/27/20	1920/1920HPS/1920W	N/A
CHKD:	DATE:	INSTALLATION	SIZE:
FV	07/15/21		A
APPROVED:	DATE:	SHEET	7 OF 7
JL		9	
PART NUMBER		REVISION	
0510000490.D			