

hardware resources®

USE58 Series Undermount Slide Installation Instructions

IMPORTANT:

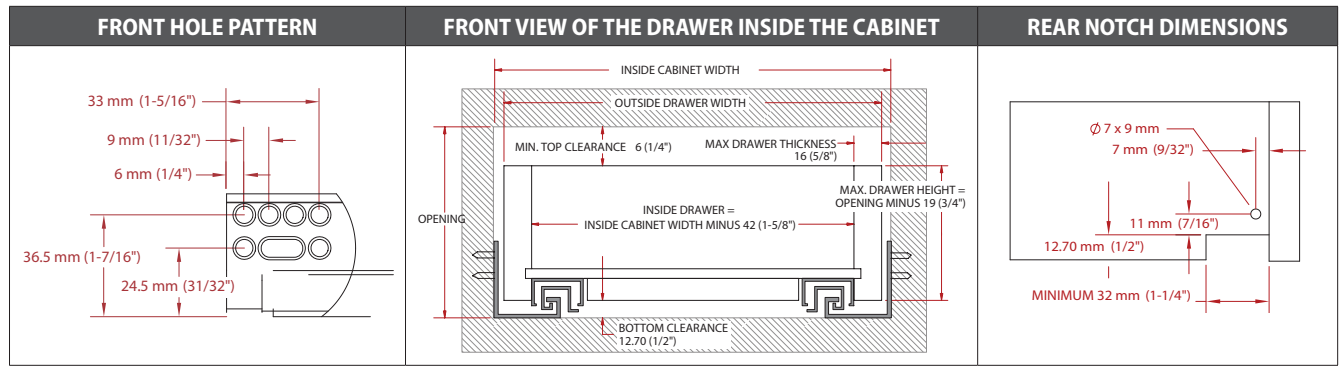
Before you begin, make sure you familiarize yourself with all the parts and fully read the instructions.

CUSTOMER SERVICE:

Toll-free customer help line available weekdays between 7:00am and 6:00pm Central Time at 800-463-0660.

TOOLS NECESSARY:

Screw gun and drill bits. NOTE: If screw gun has a clutch, set to lowest setting so as not to over tighten and/or strip screws during installation.



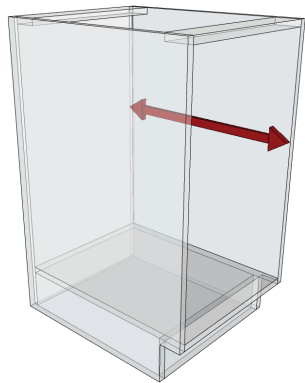
USE58-100 AND USE58-300 SERIES DRAWER BOX MINIMUM WIDTH (VARIES BY CLIP)

	US-CLIP-6WZ	US-CLIP-6W	US-CLIP-4WZ	US-CLIP-4W	US-CLIP-2W	US-CLIP-NR
5/8" (16 mm) material	7.25"	7.25"	7.25"	7.25"	6.25"	4.75"
1/2" (13 mm) material	7"	7"	7"	7"	6"	4.5"

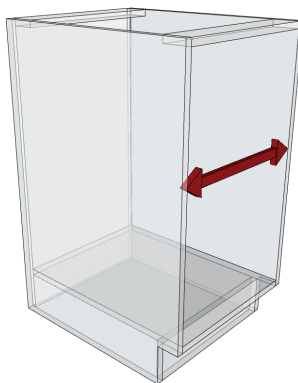
USE58-500 SERIES MINIMUM WIDTH (VARIES BY CLIP)

5/8" (16 mm) material	8.25"
1/2" (13 mm) material	8"

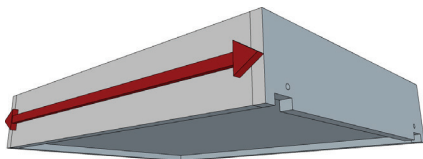
INSIDE CABINET DEPTH



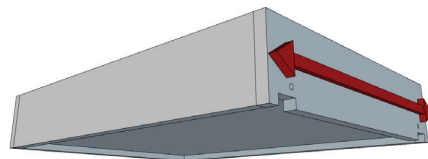
INSIDE CABINET WIDTH



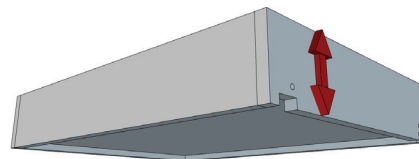
DRAWER DEPTH



DRAWER WIDTH



DRAWER HEIGHT



MAXIMUM DRAWER HEIGHT =
OPENING MINUS 19 MM (3/4")

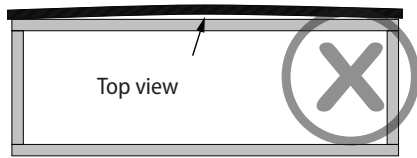
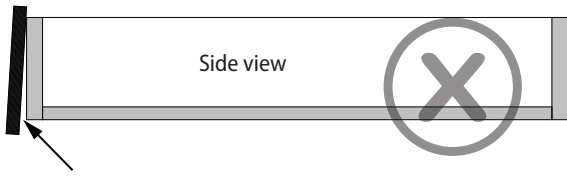
OUTSIDE DRAWER WIDTH CALCULATIONS

Drawer Side Thickness	Inside Cabinet Width Deduction
5/8" (16 mm)	3/8" (10 mm)
19/32" (15 mm)	15/32" (12 mm)
9/16" (14 mm)	9/16" (14 mm)
1/2" (13 mm)	5/8" (16 mm)
15/32" (12 mm)	23/32" (18 mm)

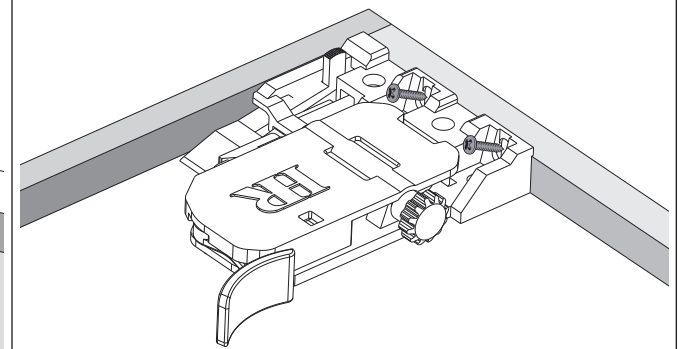
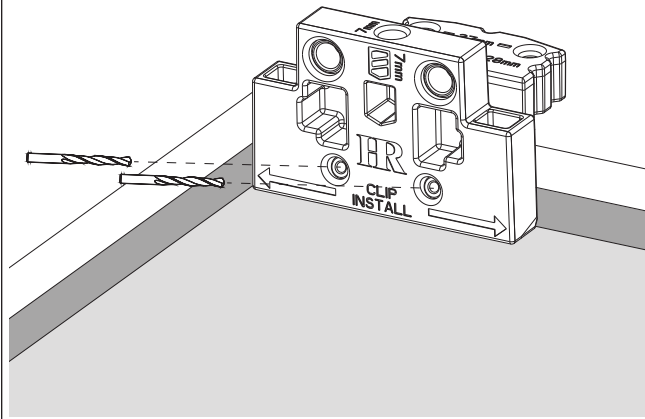
Verify drawer box is correct width

- Determine Drawer Side Thickness
- Drawer box width = Inside Cabinet Width minus proper Inside Cabinet Width Deduction (**See chart below**)
 - For 5/8" drawer box material, subtract 3/8" from inside cabinet width.
 - For 1/2" drawer box material, subtract 5/8" from inside cabinet width.
- Example: A drawer box made of 5/8" material would measure 14-5/8" for an inside cabinet width of 15".

Verify drawer front is square



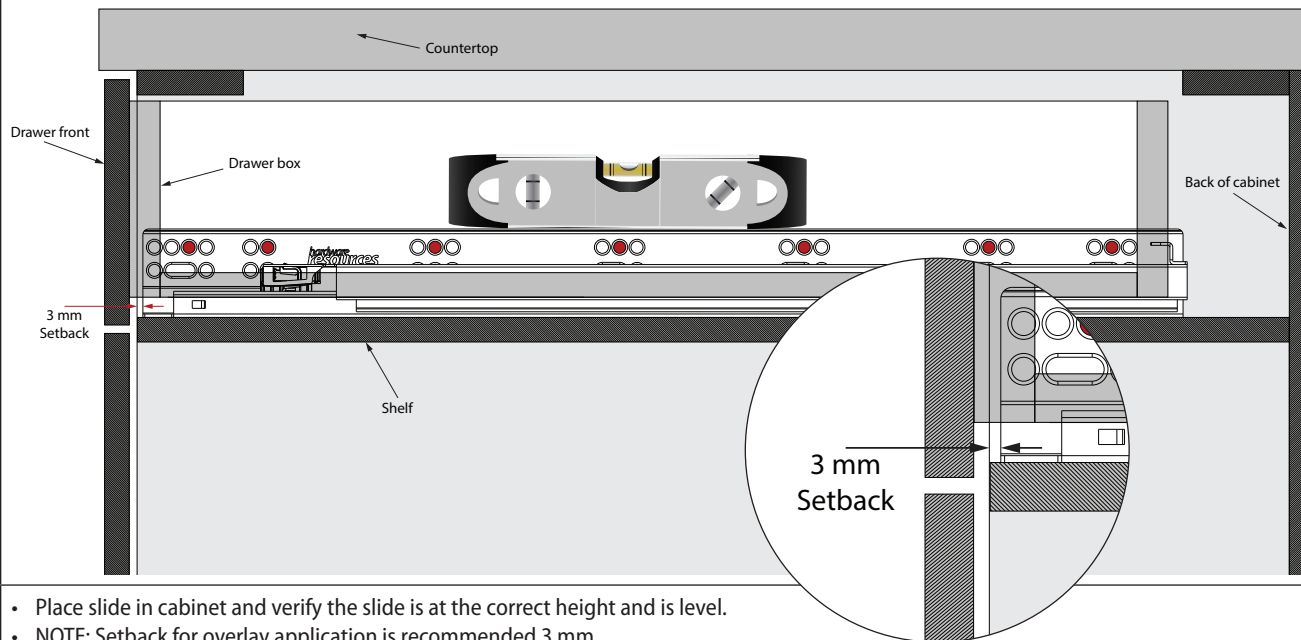
Install slide release clips



Turn drawer box upside down and drill holes for undermount slide release clips. Shown with optional multi-tool (HR-TOOL-300)

Install slide release clips with recommended # 6 x 5/8" pan head screws.

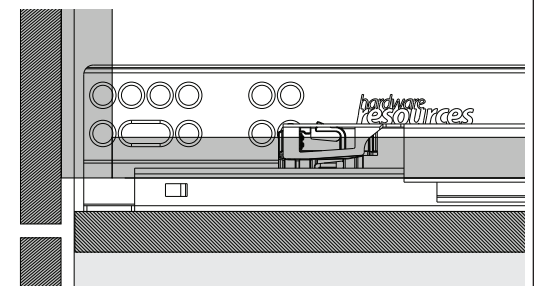
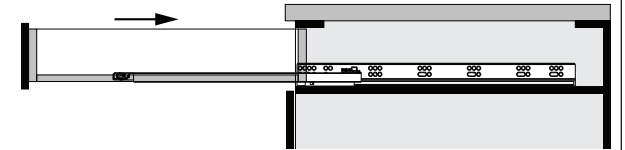
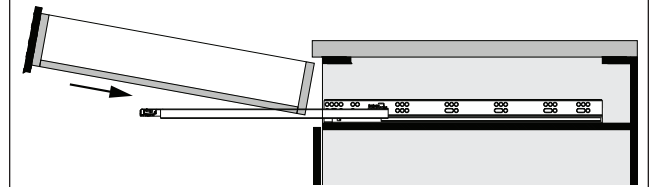
Measure and mark for slide placement



- Place slide in cabinet and verify the slide is at the correct height and is level.
- NOTE: Setback for overlay application is recommended 3 mm.
- Mark holes for predrilling. Remove slide while drilling holes to prevent wood chips from getting on the slide.
- Install slides with recommended #6 x 5/8" pan head screws.

* Not compatible with drawer bumpers

Insert and lock drawer box



- Insert the drawer box until release clips lock in.