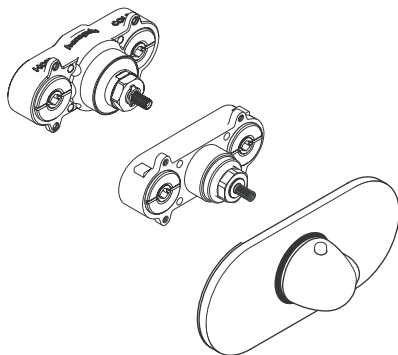


Installation Instructions / Warranty

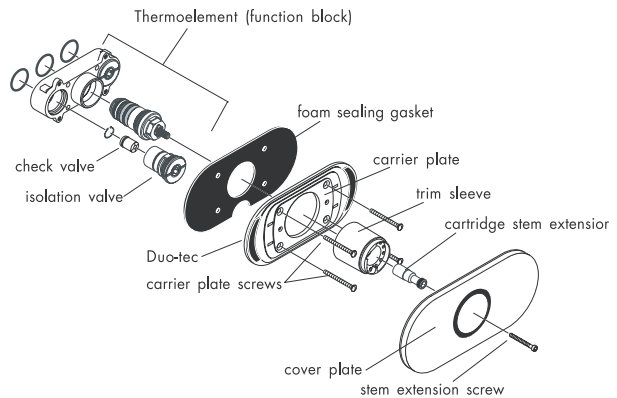
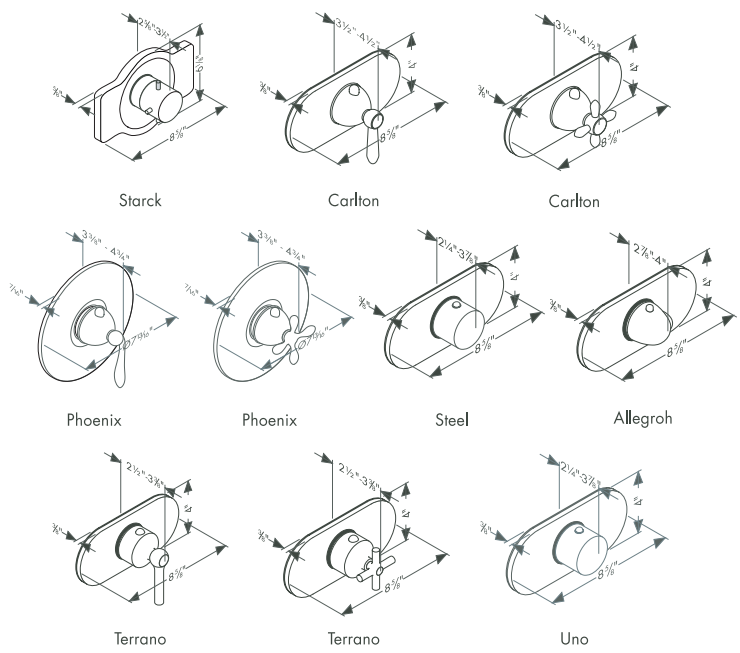


Ecostat™ Thermostatic Mixer Trim **EcoMax™ Thermostatic Mixer Trim**

	Ecostat	Ecomax
Starck	10375XX1	10379XX1
Steel	35375801	35379801
Uno	38475XX1	38379XX1
Allegroh	36375XX1	36379XX1
Terrano	37375XX1	37379XX1
Terrano	37475XX1	37374XX1
Carlton	17475XX1	17379XX1
Carlton	17375XX1	17374XX1
Phoenix	17384XX1	17387XX1
Phoenix	17385XX1	17386XX1

EcoMax™ Upgrade Kit 06800XX3

AXOR[®]
hansgrohe

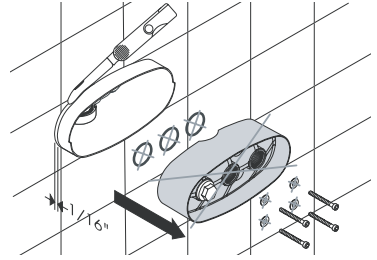


Installation Considerations

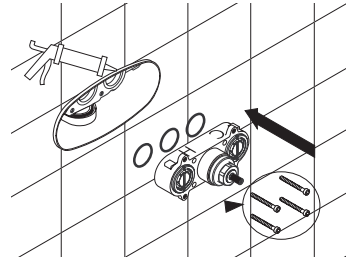
- For best results, Hansgrohe recommends that this trim kit be installed by a licensed, professional plumber.
- Prior to the installation of this trim kit, rough valve 15373181 or 15374181 must be installed. The finished wall must be complete.
- The water must be turned off at the main before beginning installation.
- **The Ecostat™ and Ecomax™ thermoelements incorporate isolation stops in the thermoelement.**

Installation

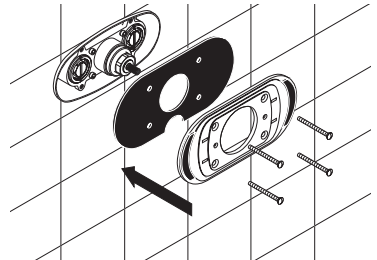
- Remove the flush insert and the o-rings. **Do not discard the hex-head screws.**



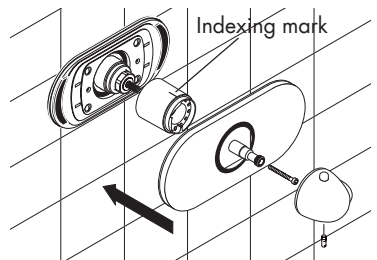
- Cut the installation box so that it is nearly flush with the finished wall. Seal around the installation box with waterproof bathroom sealant.
- Install the new o-rings included with the thermoelement. Install the thermoelement, using the saved hex-head screws. Turn on the water and check for leaks.



- Install the sealing gasket and the trim carrier plate.



- Install the trim sleeve with the indexing mark at the 12:00 position.
- Install the escutcheon and stem extension.
- Install and justify the handle.



EcoMax™ Upgrade Kit 06800XX3

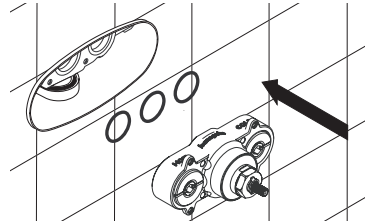
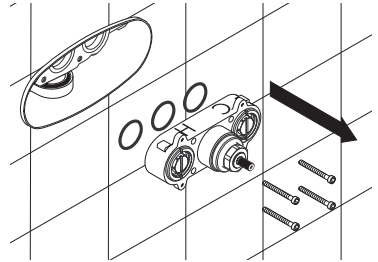
Installation Considerations

The EcoMax™ upgrade kit contains an EcoMax™ function block, trim sleeve, and screws. It is used to upgrade an existing EcoStat™ installation.

Install the EcoMax™ Upgrade Kit

Turn the water off at the main before proceeding. Do not use the stops on the EcoStat™ thermoelement.

- Remove the EcoStat™ trim. Set it aside in a safe place.
- Remove the EcoStat™ thermoelement and the o-rings.
- Install the EcoMax™ thermoelement and o-rings to the valve body. Use the screws provided with the EcoMax™ upgrade kit.
- Turn on the water to the valve and check for leaks.
- Replace the trim as shown in the previous instructions EXCEPT use the EcoMax™ trim sleeve.
- Justify the handle.



Justify the handle

Tools required: small slot-head screwdriver, thermometer

- Loosen, but do not remove, the set screw on the handle.
- Turn the water on to one of the functions. Place the thermometer in the water stream. Turn the handle until the water is 100° F.
- Remove the handle. Replace it so that the 100° mark is at the 12:00 position. Tighten the set screw.

User Instructions

- Turn the handle clockwise to make the water cooler, counter-clockwise to make it warmer.
- The handle will stop at the 100° safety stop. To obtain water hotter than 100°, push the red safety stop override button and continue turning the handle counter-clockwise.

Using the isolation stops

- Turn off the water using the isolation stops on the Ecostat or EcoMax instead of turning off the water to the whole house when making minor repairs to the shower.
- Use an 8 mm allen wrench to turn the isolation valve clockwise to close the stop. Be sure to close both the hot and cold stops before removing the cartridge, etc. Turn a volume control valve on to depressurize the system and to confirm that the water is off.
- The water must be turned off at the main before the entire thermoelement can be removed.

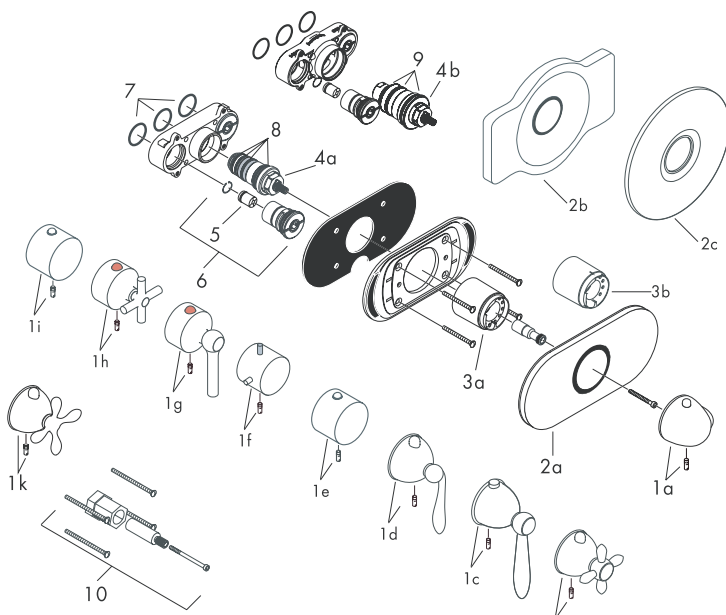


Reversing the Thermoelement

If the Ecostat™ or EcoMax™ outputs only hot or cold water, the supply lines may have been crossed, or the rough valve or thermoelement may have been installed upside down. If this is the case, a reversing cartridge is not necessary.

- Turn the water off to the valve – **do not use the stops on the thermoelement.**
- Remove, reverse, and reinstall the entire thermoelement.

In most cases, this will remedy the problem.



1a	Allegroh handle	36391XX1
1b	Carlton cross handle	17994XX1
1c	Carlton lever handle	17391X1
1d	Phoenix lever handle	96631XX1
1e	Steel handle	35391801
1f	Starck handle	10391XX1
1g	Terrano lever handle	37991XX1
1h	Terrano cross handle	37391XX1
1i	Uno handle	38391XX1
1k	Phoenix cross handle	96791XX1
2a	escutcheon	95028XX0
2b	Starck escutcheon	95029XX0
2c	Phoenix escutcheon	96634XX1
3a	Ecostat™ sleeve	95032XX0
3b	Ecomax™ sleeve	96635XX0
4a	Ecostat™ cartridge	94282000
4b	EcoMax™ cartridge	96633000
5	check valve	95033000
6	Isolation stop	95036000
7	seal kit	96364000
8	seal kit	95037000
9	seal kit	96636000
10	extension kit (optional)	92615000

XX = color
 00 = chrome
 09 = chrome/gold
 80 = steel
 81 = satinox
 82 = brushed nickel
 83 = polished nickel
 88 = satin chrome
 93 = polished brass

Cleaning Recommendation for Hansgrohe Products

Modern faucetry and shower products utilize a combination of materials to comply with the needs of the market with regard to design and functionality.

To avoid damage, it is necessary to use some caution when cleaning. Damage caused by improper treatment is not covered under the Hansgrohe warranty.

Cleaning Materials for Faucets and Showers

- To remove lime scale, use only products made specifically for that purpose. Always follow the manufacturer's instructions when using.
- Do not use cleaners that contain hydrochloric, formic, acetic, or phosphoric acids, as these will cause considerable damage to finishes and to plastic components.
- Never mix cleaning materials.
- Never use cleaners containing abrasives. Do not use abrasive cleaning cloths, pads, or sponges.

Cleaning Procedures

- Clean your faucets and shower products as and when required. Regular cleaning will prevent scale buildup and water spotting.
- Follow the label instructions. Do not allow any cleaner to remain on the product for longer than necessary.
- When using spray cleaners, spray first onto a sponge or cloth – do not spray directly onto the product.
- After cleaning, rinse thoroughly with clear water to remove any cleaner residue.

Important

- Soap and shampoo residue can also cause damage to the product. Rinse well with clean water after use.
- If the surface is already damaged, harsh cleaning materials will cause further damage.

Limited Lifetime Consumer Warranty

This product has been manufactured and tested to the highest quality standards by Hansgrohe, Inc. ("Hansgrohe"). This warranty is limited to Hansgrohe products which are purchased by a consumer in the United States after March 1, 1996, and installed in either the United States or Canada.

WHO IS COVERED BY THE WARRANTY

This warranty extends to the original consumer purchaser only.

WHAT IS COVERED BY THE WARRANTY

This warranty covers only your Hansgrohe manufactured product. Hansgrohe warrants this product against defects in material or workmanship as follows: Hansgrohe will repair at no charge for parts only or, at its option, replace any product or part of the product which proves defective because of improper workmanship and/or material, under normal installation, use, service and maintenance. If Hansgrohe is unable to provide a replacement and repair is not practical or cannot be timely made, Hansgrohe may elect to refund the purchase price in exchange for the return of the product.

LENGTH OF WARRANTY

Replacement or repaired parts of products will be covered for the term of this warranty as stated in the following two sentences. If you are a consumer who purchased the product for use primarily for personal, family, or household purposes, this warranty extends for as long as you own the product and the home in which the product is installed. If you purchased the product for use primarily for any other purpose, including, without limitation, a commercial purpose, this warranty extends only (i) for 1 year, with respect to Interaktiv and Retroaktiv products, and (ii) for 5 years, with respect to AXOR, ShowerPower and Pharo products.

THIS WARRANTY DOES NOT COVER, AND HANSGROHE WILL NOT PAY FOR:

- A. Conditions, malfunctions or damage not resulting from defects in material or workmanship.
- B. Conditions, malfunctions or damage resulting from (1) improper installation, improper maintenance, misuse, abuse, negligence, accident or alteration, or (2) the use of abrasive or caustic cleaning agents or "no rinse" cleaning products, or the use of the product in any manner contrary to the product instructions.
- C. Labor or other expenses for the disconnection or return of the product for warranty service, or for installation or reinstallation of the product.
- D. Accessories or related products not manufactured by Hansgrohe.

TO OBTAIN WARRANTY SERVICE

Contact your Hansgrohe retailer, or write to Technical Service at:

Hansgrohe Inc.
1492 Bluegrass Lakes Parkway
Alpharetta GA 30004

Or, call Hansgrohe toll-free at (800) 334-0455.

In requesting warranty service, you will need to provide

- 1. The sales receipt or other evidence of the date and place of purchase.
- 2. A description of the problem.
- 3. Delivery of the product or the defective part, postage prepaid and carefully packed and insured, to Hansgrohe Inc. 1492 Bluegrass Lakes Parkway, Alpharetta, Georgia 30004, Attention: Technical Service, if required by Hansgrohe.

When warranty service is completed, any repaired or replacement product or part will be returned to you postage prepaid.

EXCLUSIONS AND LIMITATIONS

REPAIR OR REPLACEMENT (OR, IN LIMITED CIRCUMSTANCES, REFUND OF THE PURCHASE PRICE) AS PROVIDED UNDER THIS WARRANTY IS THE EXCLUSIVE REMEDY OF THE PURCHASER. HANSGROHE NEITHER ASSUMES NOR AUTHORIZES ANY PERSON TO CREATE FOR IT ANY OBLIGATION OR LIABILITY IN CONNECTION WITH THIS PRODUCT.

HANSGROHE SHALL NOT BE LIABLE TO PURCHASER OR ANY PERSON FOR ANY INCIDENTAL, SPECIAL, OR CONSEQUENTIAL DAMAGES, ARISING OUT OF BREACH OF THIS WARRANTY OR ANY IMPLIED WARRANTY (INCLUDING MERCHANTABILITY).

Some States do not allow the exclusion or limitation of incidental or consequential damages, so the above limitation or exclusion may not apply to you.

This warranty gives you specific legal rights, and you may have other rights which vary from State to State.

You may be required by law to give us a reasonable opportunity to correct or cure any failure to comply before you can bring any action in court against us under the Magnuson-Moss Warranty Act.

PRODUCT INSTRUCTIONS AND QUESTIONS

Upon purchase or prior to installation, please carefully inspect your Hansgrohe product for any damage or visible defect. Prior to installing, always carefully study the enclosed instructions on the proper installation and the care and maintenance of the product. If you have questions at any time about the use, installation, or performance of your Hansgrohe product, or this warranty, please call or write to us at the toll-free number and address printed above.

hansgrohe

Hansgrohe, Inc. • 1490 Bluegrass Lakes Parkway • Alpharetta, GA 30004
Tel. 770 360-9880 • Fax 770 360 9887
www.hansgrohe-USA.com