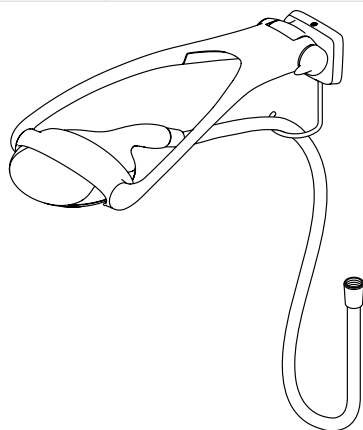


Installation Instructions / Warranty



Raindance Allrounder

28100000

Corner Mount Kit

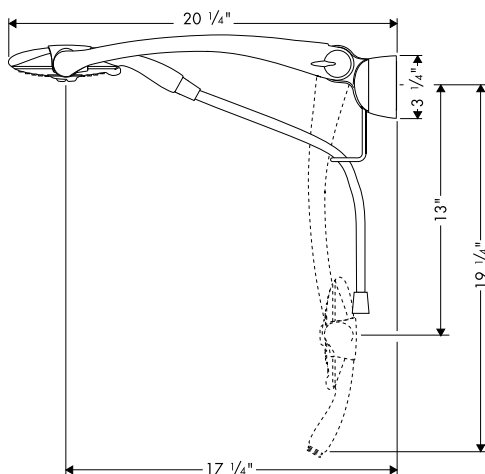
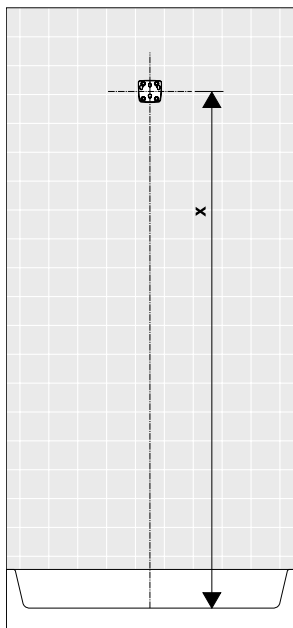
28105000

**Wall Outlet Adapter with Hose
Connection**

28108001

hansgrohe

Raindance Allrounder 28100000



Technical Data

Max. flow rate of showerhead 2.5 gpm

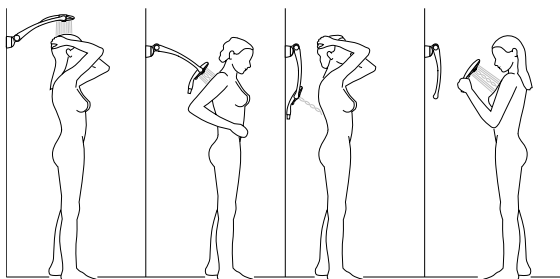
Available accessories:

28105000 corner mount kit - allows installation in 90° corner

28108001 wall outlet adapter with hose connection

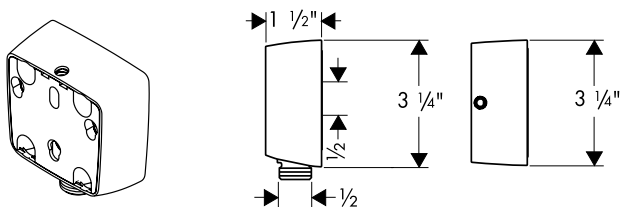
Determining the mounting height

The Allrounder should be mounted according to the preferences of the users. It should be convenient for all adult users.



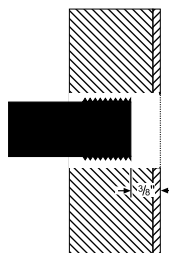
Install the Allrounder with the Optional Wall Outlet Adapter with Hose Connection 28108XX1

If you are not using the 28108XX1 wall outlet adapter, go to page 7.



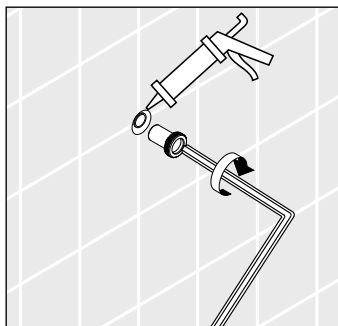
Roughing in

Wall outlet adapter requires one 1/2" male nipple, recessed 3/8" behind the surface of the finished wall.

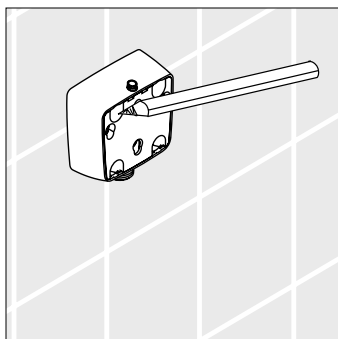


Install the wall outlet adapter

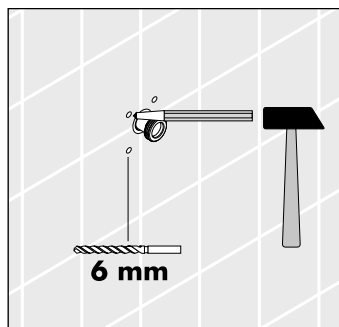
Wrap the threads with Teflon tape. Screw the mounting piece onto the nipple. Hansgrohe suggests using a 12mm allen wrench (not included). Seal the wall around the mounting piece with water-proof bathroom sealant.



Position the mounting plate over the mounting piece. Use a grease pencil or similar tool to mark the position of the screw holes. Put the mounting plate away in a safe place.

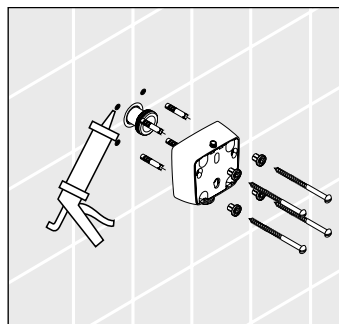


Drill the holes with a 6 mm bit suitable for the wall surface. **Use extreme caution - do not drill into the water line.**

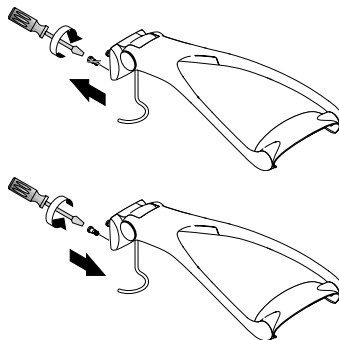


Install the anchors. Seal the wall around the anchors with waterproof bathroom sealant.

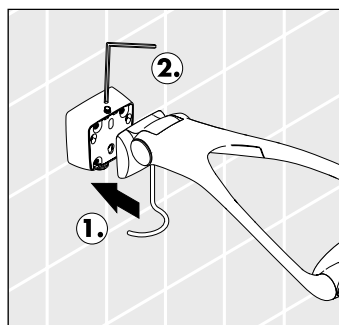
Install the mounting plate, using the screws and offset bushings provided.



Remove the long bottom mounting screw on the Allrounder. Replace with the shorter screw included with the adapter.



Attach the Allrounder to the mounting plate. Tighten the set screw.



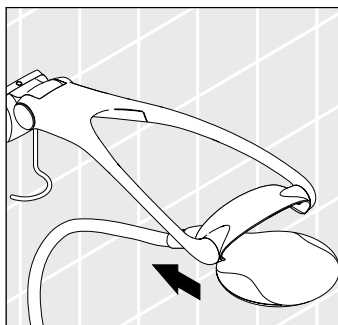
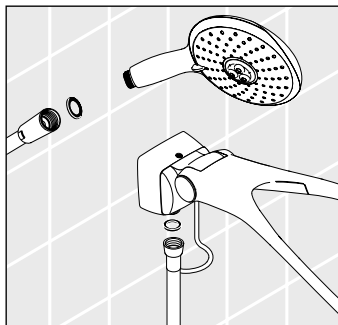
Install the handshower

Compare the two ends of the handshower hose. One hose end connection is longer than the other.

Place a black rubber washer in the shorter of the two hose end connections. Screw the short end to the outlet on the Allrounder.

Place a black rubber washer in the longer of the two hose end connections. Screw the long end to the handshower.

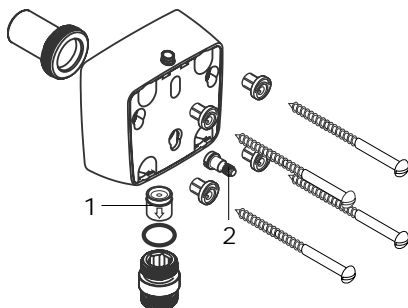
Slide the handshower into the handshower holder. Guide the hose over the hose hook.



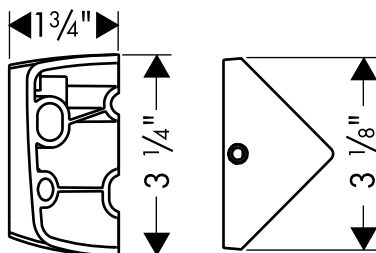
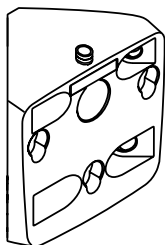
Important User Information: Backflow prevention is provided by a check valve, which is integral to the wall outlet adapter. The check valve should be removed and cleaned yearly.

Replacement Parts 28108001

- | | | |
|---|-------------|----------|
| 1 | check valve | 94074000 |
| 2 | screw | 97598000 |



Corner Mount Kit 28105000 (optional)



Important: The corner mount kit is not for use with the 28108001 wall outlet adapter.

Installation

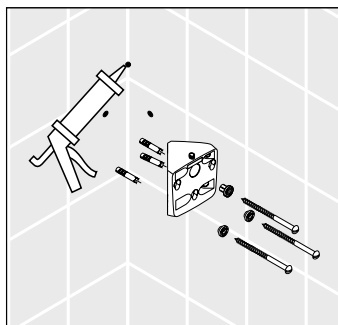
Position the corner mounting piece against the wall at the desired location. Mark the positions of the screw holes. Put the corner mounting piece away in a safe location.

Drill the holes using a 6 mm bit suitable for the wall surface.

Install the anchors. Seal the wall around the anchors with a suitable, non-staining, waterproof bathroom sealant.

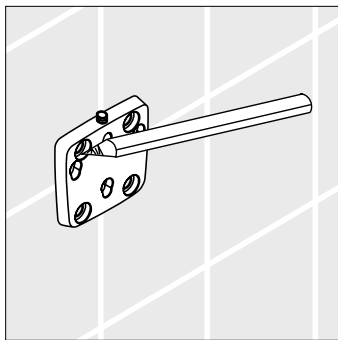
Attach the mounting piece to the wall with the screws and offset bushings provided.

Install the Allrounder. Tighten the setscrew.

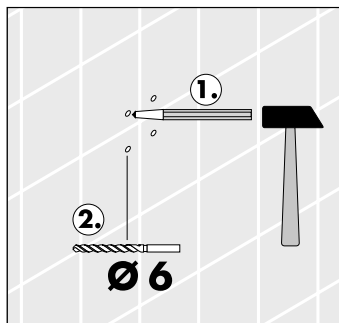


Install the Allrounder

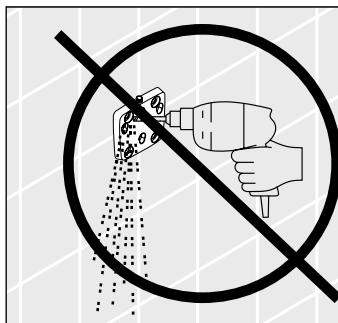
Place the mounting plate against the wall at the desired location. Mark the locations of the screw holes. Put the mounting plate away in a safe location.



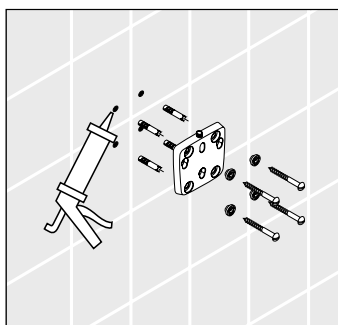
Drill the holes, using a 6 mm bit suitable for the wall surface. Install the anchors. Seal the wall around the anchors with waterproof bathroom sealant.



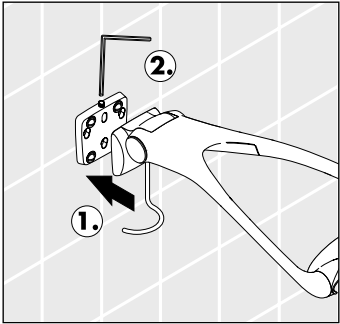
Do not drill through the mounting plate.



Secure the mounting plate to the wall with the screws and the offset bushings provided. The set screw should be on top.

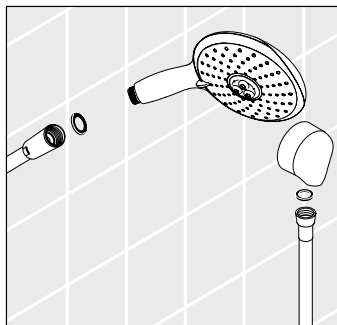


Place the Allrounder over the mounting bracket (1). Tighten the set screw (2).



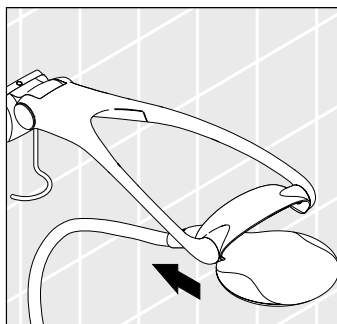
Install the handshower:

Compare the two ends of the handshower hose. Place a black rubber washer in the shorter of the two hose end connectors. Screw the shorter connector to the water supply (not included).



Place a black rubber washer in the longer hose end connector. Screw it to the handshower.

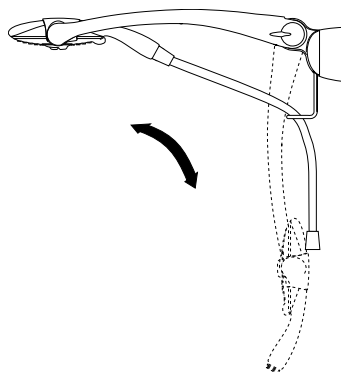
Slide the handshower into the holder, until the holder grips it firmly. Guide the hose over the hose hook.



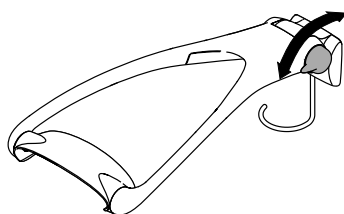
Using the Allrounder

To adjust the handshower height:

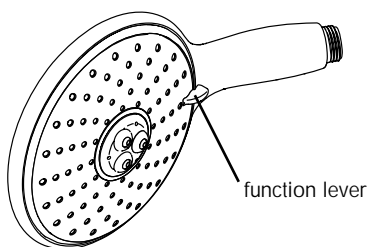
Pull or push the Allrounder to the desired position.



Turn the knob to the front to make the Allrounder easier to move. Turn the knob to the rear to make it harder to move.

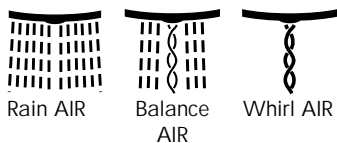


Raindance Handshower with Soft Grip 28501001



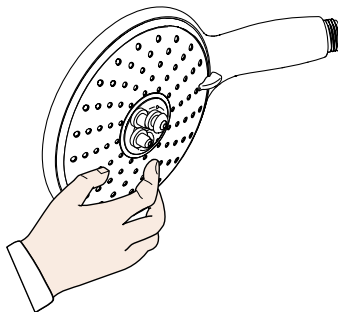
Change the spray modes

Push the function lever until it is next to the name of the desired function. The Raindance™ has 3 spray modes.

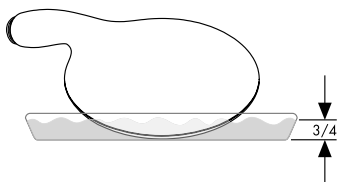


Limescale Removal

The spray channels on the Raindance are protected by the Rubit!™ self-cleaning system. If scale deposits are noticed, turn the water on lightly and rub across the channels with a sponge or fingers



Remove scale deposits on the spray face by using a commercial limescale remover such as Lime-Away™ or CLR™. Follow the label instructions carefully. Soak only the spray face.

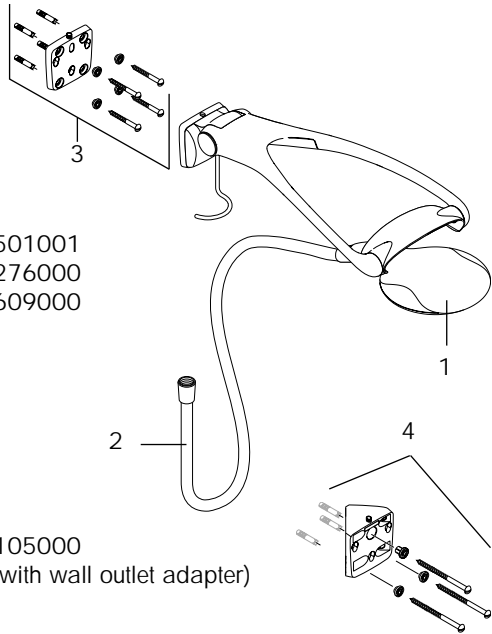


Rinse the handshower thoroughly when finished.

Replacement parts
28100000

- | | | |
|---|-----------------|----------|
| 1 | Handshower | 28501001 |
| 2 | Techniflex hose | 28276000 |
| 3 | Mounting plate | 97609000 |

- | | | |
|---|---|----------|
| 4 | Corner mount kit | 28105000 |
| | (optional - not for use with wall outlet adapter) | |



Cleaning Recommendation for Hansgrohe Products

Modern faucetry and shower products utilize a combination of materials to comply with the needs of the market with regard to design and functionality.

To avoid damage, it is necessary to use some caution when cleaning. Damage caused by improper treatment is not covered under the Hansgrohe warranty.

Cleaning Materials for Faucets and Showers

- To remove lime scale, use only products made specifically for that purpose. Always follow the manufacturer's instructions when using.
- Do not use cleaners that contain hydrochloric, formic, acetic, or phosphoric acids, as these will cause considerable damage to finishes and to plastic components.
- Never mix cleaning materials.
- Never use cleaners containing abrasives. Do not use abrasive cleaning cloths, pads, or sponges.

Cleaning Procedures

- Clean your faucets and shower products as and when required. Regular cleaning will prevent scale buildup and water spotting.
- Follow the label instructions. Do not allow any cleaner to remain on the product for longer than necessary.
- When using spray cleaners, spray first onto a sponge or cloth – do not spray directly onto the product.
- After cleaning, rinse thoroughly with clear water to remove any cleaner residue.

Important

- Soap and shampoo residue can also cause damage to the product. Rinse well with clean water after use.
- If the surface is already damaged, harsh cleaning materials will cause further damage.

Limited Lifetime Consumer Warranty

This product has been manufactured and tested to the highest quality standards by Hansgrohe, Inc. ("Hansgrohe"). This warranty is limited to Hansgrohe products which are purchased by a consumer in the United States after March 1, 1996, and installed in either the United States or Canada.

WHO IS COVERED BY THE WARRANTY

This warranty extends to the original consumer purchaser only.

WHAT IS COVERED BY THE WARRANTY

This warranty covers only your Hansgrohe manufactured product. Hansgrohe warrants this product against defects in material or workmanship as follows: Hansgrohe will repair at no charge for parts only or, at its option, replace any product or part of the product which proves defective because of improper workmanship and/or material, under normal installation, use, service and maintenance. If Hansgrohe is unable to provide a replacement and repair is not practical or cannot be timely made, Hansgrohe may elect to refund the purchase price in exchange for the return of the product.

LENGTH OF WARRANTY

Replacement or repaired parts of products will be covered for the term of this warranty as stated in the following two sentences. If you are a consumer who purchased the product for use primarily for personal, family, or household purposes, this warranty extends for as long as you own the product and the home in which the product is installed. If you purchased the product for use primarily for any other purpose, including, without limitation, a commercial purpose, this warranty extends only (i) for 1 year, with respect to Interaktiv and Retroaktiv products, and (ii) for 5 years, with respect to AXOR, ShowerPower and Pharo products.

THIS WARRANTY DOES NOT COVER, AND HANSGROHE WILL NOT PAY FOR:

- A. Conditions, malfunctions or damage not resulting from defects in material or workmanship.
- B. Conditions, malfunctions or damage resulting from (1) improper installation, improper maintenance, misuse, abuse, negligence, accident or alteration, or (2) the use of abrasive or caustic cleaning agents or "no rinse" cleaning products, or the use of the product in any manner contrary to the product instructions.
- C. Labor or other expenses for the disconnection or return of the product for warranty service, or for installation or reinstallation of the product.
- D. Accessories or related products not manufactured by Hansgrohe.

TO OBTAIN WARRANTY SERVICE

Contact your Hansgrohe retailer, or write to Technical Service at:

Hansgrohe Inc.
1492 Bluegrass Lakes Parkway
Alpharetta GA 30004

Or, call Hansgrohe toll-free at (800) 334-0455.

In requesting warranty service, you will need to provide

1. The sales receipt or other evidence of the date and place of purchase.
2. A description of the problem.
3. Delivery of the product or the defective part, postage prepaid and carefully packed and insured, to Hansgrohe Inc. 1492 Bluegrass Lakes Parkway, Alpharetta, Georgia 30004, Attention: Technical Service, if required by Hansgrohe.

When warranty service is completed, any repaired or replacement product or part will be returned to you postage prepaid.

EXCLUSIONS AND LIMITATIONS

REPAIR OR REPLACEMENT (OR, IN LIMITED CIRCUMSTANCES, REFUND OF THE PURCHASE PRICE) AS PROVIDED UNDER THIS WARRANTY IS THE EXCLUSIVE REMEDY OF THE PURCHASER. HANSGROHE NEITHER ASSUMES NOR AUTHORIZES ANY PERSON TO CREATE FOR IT ANY OBLIGATION OR LIABILITY IN CONNECTION WITH THIS PRODUCT.

HANSGROHE SHALL NOT BE LIABLE TO PURCHASER OR ANY PERSON FOR ANY INCIDENTAL, SPECIAL, OR CONSEQUENTIAL DAMAGES, ARISING OUT OF BREACH OF THIS WARRANTY OR ANY IMPLIED WARRANTY (INCLUDING MERCHANTABILITY).

Some States do not allow the exclusion or limitation of incidental or consequential damages, so the above limitation or exclusion may not apply to you.

This warranty gives you specific legal rights, and you may have other rights which vary from State to State.

You may be required by law to give us a reasonable opportunity to correct or cure any failure to comply before you can bring any action in court against us under the Magnuson-Moss Warranty Act.

PRODUCT INSTRUCTIONS AND QUESTIONS

Upon purchase or prior to installation, please carefully inspect your Hansgrohe product for any damage or visible defect. Prior to installing, always carefully study the enclosed instructions on the proper installation and the care and maintenance of the product. If you have questions at any time about the use, installation, or performance of your Hansgrohe product, or this warranty, please call or write to us at the toll-free number and address printed above.

hansgrohe

Hansgrohe, Inc. • 1490 Bluegrass Lakes Parkway • Alpharetta, GA 30004
Tel. 770 360-9880 • Fax 770 360 9887

www.hansgrohe-USA.com