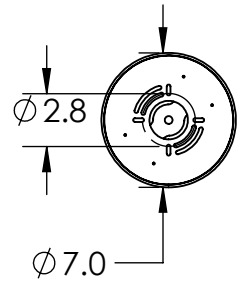
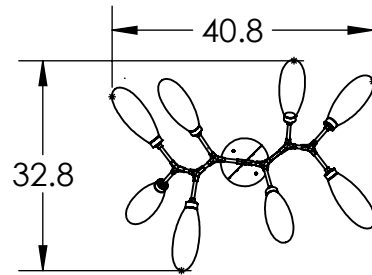
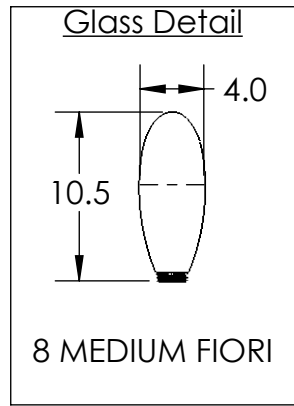
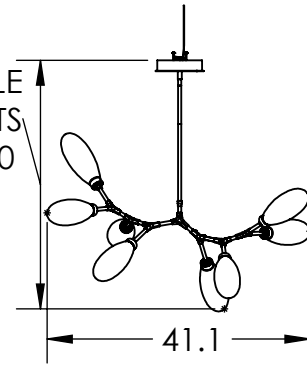


All dimensions are shown in inches unless otherwise stated.



OAH ADJUSTABLE
IN 3" INCREMENTS
FROM 27.0 - 78.0



Mounting Method: Mounts to j-box

PRODUCT SPECIFICATION

Construction: Steel Canopy, Steel Rods, Blown Glass

Finish Options: BS MB FB GB CS GP BB NB SN GM RB HB

Glass Options: White Glass

Suspension Method: Ceiling Mount

Weight(lbs.): 35

UL Rating: DRY

Top Diffuser: N/A

Bottom Diffuser: CLOSED GLASS

Light Source: LED

Electrical Qty: 8

Wattage (Watts):21

Voltage (Volts): 120

Source Lumens: 1440

Dimming: Forward/Reverse Phase to 1%

CCT: 2700/3000K

Driver Quantity & Location: 1, in Canopy

CRI: 93+

Power Factor: >0.9

PRODUCT DESCRIPTION

Lustrous white buds of artisan blown glass offer a playful reinterpretation of mid-century style in this 8-light linear organic branch chandelier. Integrated LED light gives the glass a rich luster and opacity that's reminiscent of mid-century Italian art glass.

SCAN FOR MORE
INFORMATION

Notes:

GENERAL NOTES:

Visit studio.hammerton.com to read about our Lifetime Limited Warranty.

This product may use mixed materials (steel and aluminum) in its construction. Transparent finishes may vary between steel and aluminum.

All Hammerton fixtures are handcrafted by artisans. Subtle imperfections reflect the mark of the artisan and should be expected in any handcrafted product. Dimensions may vary up to 7/8".

*Translucent finish upgrade available for additional charge

Rev (A) 9/28/2022