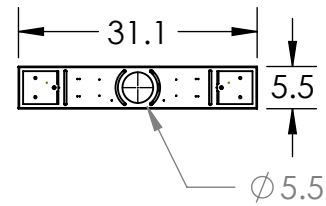
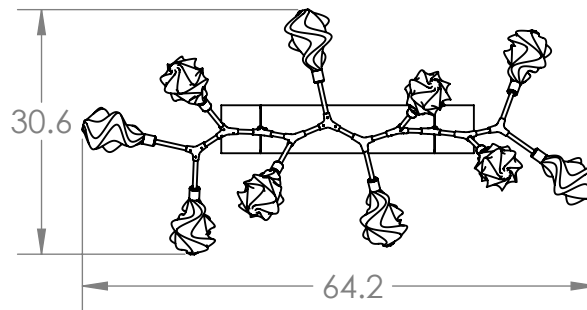


Mounting Detail
Mounts to Building Structure



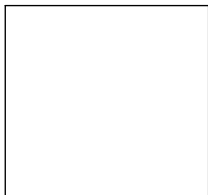
PRODUCT DESCRIPTION

Juxtaposing traditional, organic and modern elements, the Blossom 10 Piece Modern Branch linear suspension pairs integrated LED-lit artisan blown glass with hand-polished steel. The look is bold and surprisingly versatile, elevating a range of interiors from modern and contemporary to rustic and transitional.

PRODUCT SPECIFICATION

- Construction: Aluminum Branch, Steel Suspension, Blown Glass
- Finish Options: BS MB FB GB CS GP BB NB SN GM RB HB
- Glass Options: Clear Blown Glass
- Suspension Method: Ceiling Mount
- Weight (lbs.): 53
- UL Rating: Indoor/Dry
- Top Diffuser: Closed Glass
- Bottom Diffuser: Closed Glass
- Light Source: LED
- Electrical Qty: 10
- Wattage (Watts): 26
- Voltage (Volts): 120
- Source Lumens: 2332
- Dimming: Forward/Reverse Phase to 1%
- CCT: 2700K or 3000K
- Driver Quantity & Location: 2 Drivers in Canopy
- CRI: 93+
- Power Factor: >0.9

SCAN FOR MORE INFORMATION



GENERAL NOTES:

All dimensions are shown in inches unless otherwise stated.
 Visit studio.hammerton.com to read about our Lifetime Limited Warranty.
 This product may use mixed materials like steel and aluminum in its construction. Transparent finishes may vary between steel and aluminum.
 All Hammerton fixtures are handcrafted by artisans. Subtle imperfections reflect the mark of the artisan and should be expected in any handcrafted product. Dimensions may vary up to 7/8".

© Copyright 2022. All rights in design, detail or invention of this drawing are reserved as the property of Hammerton. Any imitation or adaptation without written consent is strictly prohibited.
 Hammerton Inc. 217 Wright Brothers Dr. Salt Lake City, UT 84116 (801)973-8095 | studio.hammerton.com | info@hammerton.com