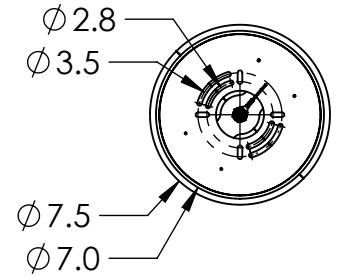
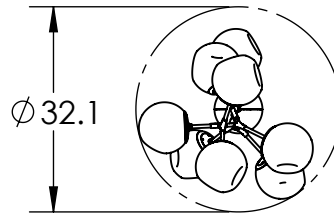
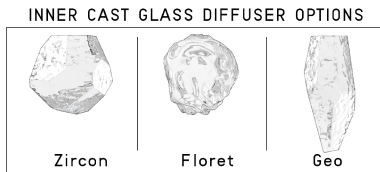


Mounting Detail

Mounts to J-Box



PRODUCT DESCRIPTION

A modern reinterpretation of the classic blown glass shade, the organic-inspired Nebula Luna 6 Piece Modern Vine replaces the traditional filament bulb with LED-illuminated artisan cast glass diffusers in a choice of three styles. Includes 93+ CRI integrated LED and a choice of three diffuser styles. Available only with Luna blown glass and integrated LED lamping.

PRODUCT SPECIFICATION

Construction: Aluminum Branches, Steel Suspension, Blown Glass

Finish Options:

BS	MB	FB	GB	CS	GP	BB	NB
----	----	----	----	----	----	----	----

Glass Options:

A	B	C	S
---	---	---	---

Suspension Method: Ceiling Mount

Weight(lbs.): 45

UL Rating: Indoor/Dry

Top Diffuser: Blown Glass

Bottom Diffuser: Blown Glass

Light Source: LED

Electrical Qty: 8

Wattage (Watts):21

Voltage (Volts): 120

Source Lumens: 1866

Dimming: Forward/Reverse Phase to 1%

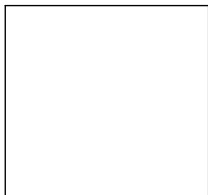
CCT: 2700k or 3000K

Driver Quantity & Location: 2, in Canopy

CRI: 93+

Power Factor: >0.9

SCAN FOR MORE INFORMATION



GENERAL NOTES:

All dimensions are shown in inches unless otherwise stated. Visit studio.hammerton.com to read about our Lifetime Limited Warranty. This product may use mixed materials like steel and aluminum in its construction. Transparent finishes may vary between steel and aluminum. Hammerton products are made by artisans, not machines. A close inspection may reveal subtle variations and imperfections in glass, metal and other handcrafted materials that reflect the mark of the maker. They should be expected and celebrated.