

# Halsey Taylor®

## Installation Manual

HF1500VRBMC

### 1500 Gallon Vandal-Resistant Retro-Fit Filter Kit with Filter Monitor

**IMPORTANT NOTE** – To avoid danger of an electric shock hazard, disconnect power to your unit before installing the filter.

#### **IMPORTANT**

THIS IS AN INDOOR APPLICATION ONLY.  
ALL SERVICE TO BE PERFORMED BY AN  
AUTHORIZED SERVICE PERSON.

#### **TOOLS REQUIRED**

##### **BUT NOT PROVIDED:**

- SAFETY GLASSES
- GLOVES
- LEVEL
- PENCIL
- MOUNTING SCREWS, ANCHORS, FASTENERS

#### **INSTALLATION STEPS**

1. Before starting your installation, verify that you have the following included pieces.
  - a. 1 Pinned Torx Bit
  - b. 2 AA Batteries
  - c. 1 Pinned Torx Screw
  - d. 3.5 Feet of Poly Tubing
2. Find a location to mount your new filter box near the water dispenser to which it is being connected. For accurate monitoring, the filter box should be mounted vertically as shown (Fig. 2, page 2).
3. **Shut off the water and electricity to the water dispenser.**
4. Lift the cover at the bottom and slide upwards toward the top.



**Fig. 1**

5. Take the filter box and place on the wall in the desired location. Be sure that the box is positioned vertically on the wall as shown. The arrow on the water monitor valve should always be pointing UP (Fig. 4). Make sure the filter box is level, take a pencil and mark around the inside opening and the mounting locations. If the water will not be coming thru the wall into the back of the filter box, knock-outs have been provided to allow the water lines to run thru the sides or bottom. **NOTE:** If running the water lines thru the knockouts, use the appropriate protection (not provided) to keep the lines from getting cut.

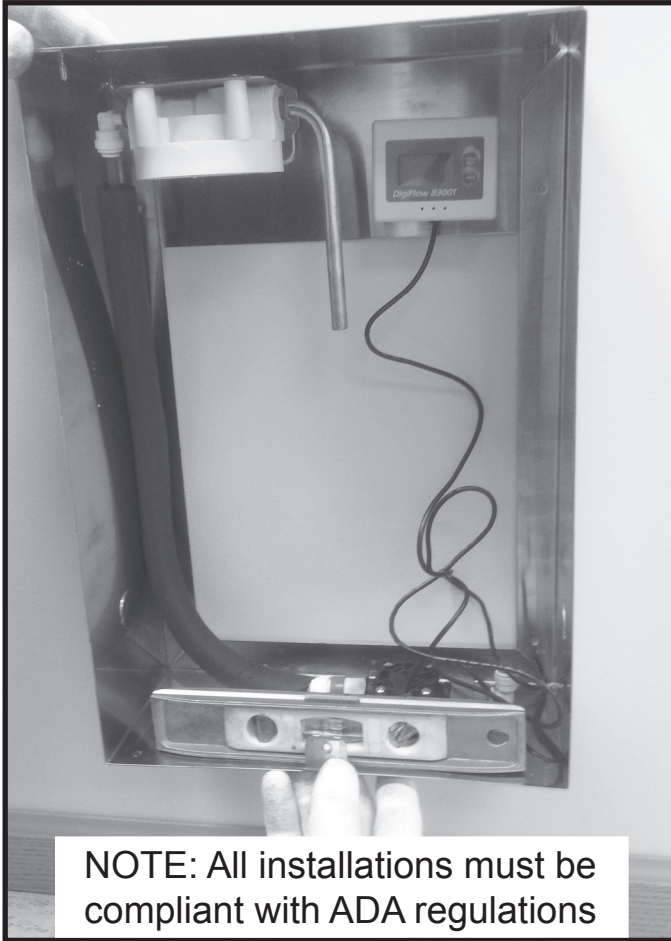


Fig. 2

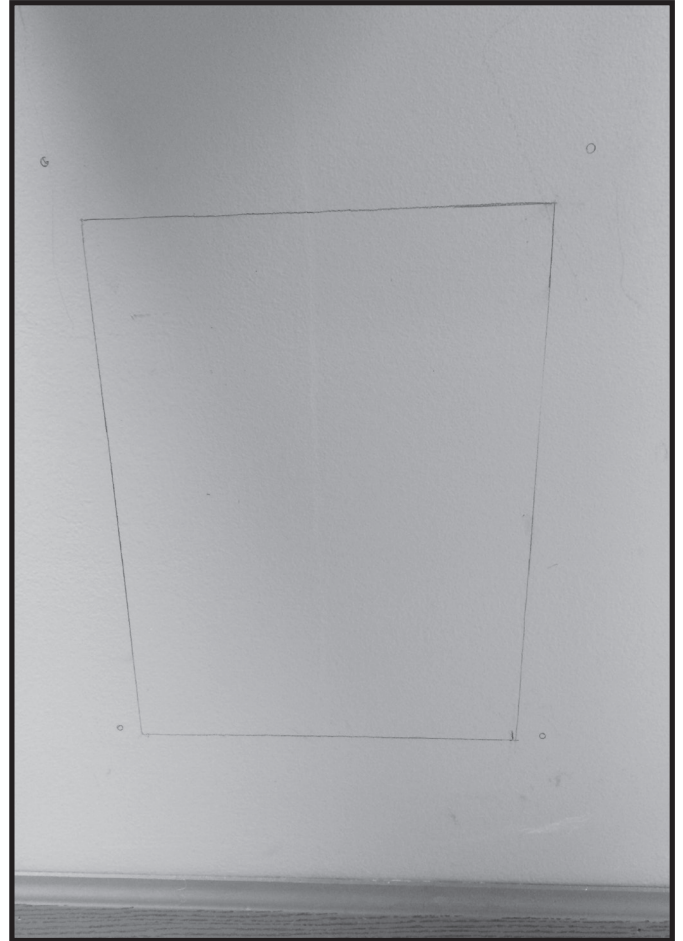


Fig. 3

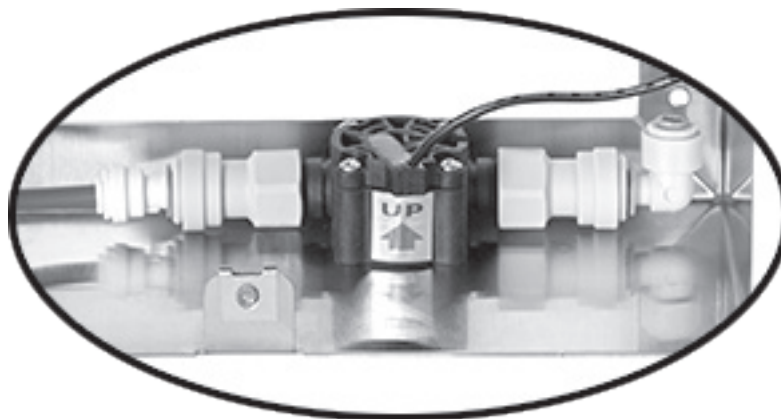


Fig. 4

6. Cut a hole in the wall anywhere inside the marked location to allow room for the water lines to come into the back of the box.
7. Remove any protective covering from the outside of the filter box.



**Fig. 5**



**Fig. 6**

8. Using the appropriate fasteners (Not Supplied), mount the box to the wall.

9. Disconnect the water inlet from the water dispenser and connect to the inlet copper tube on the filter head.

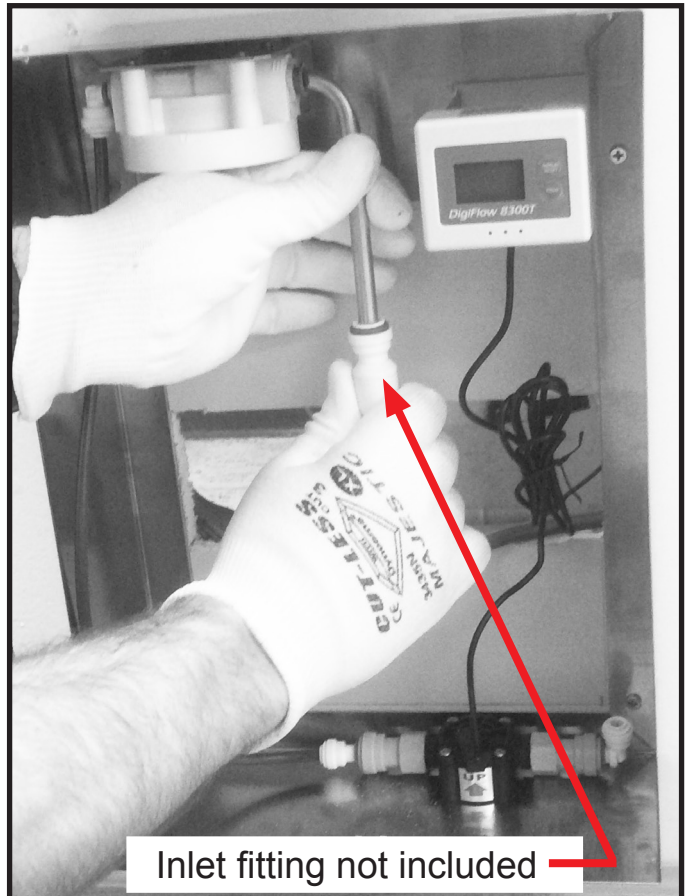


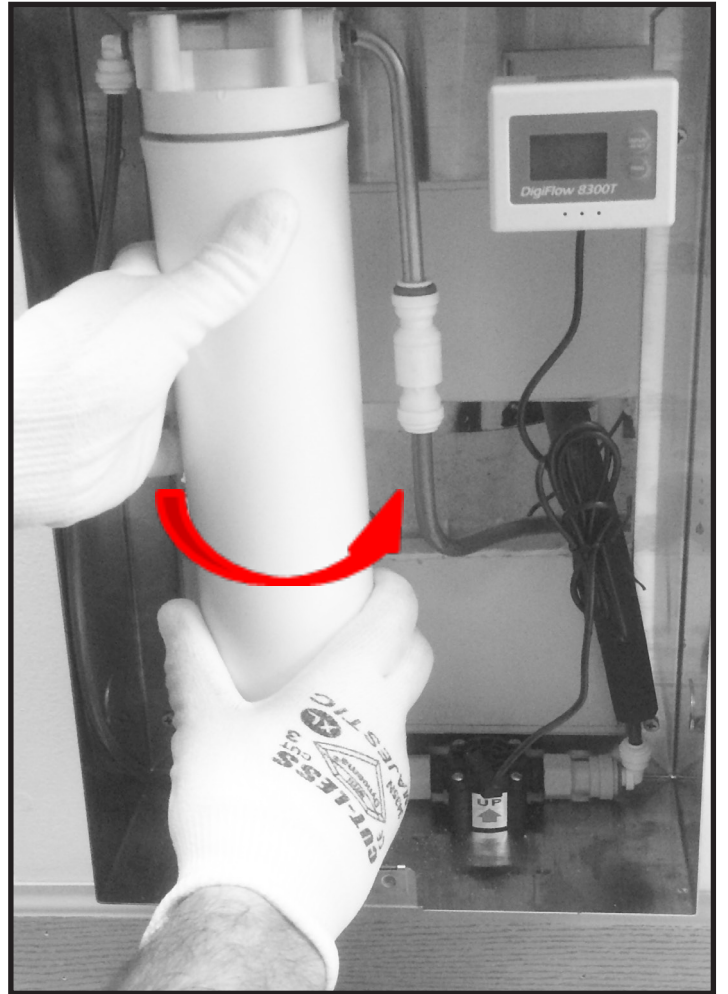
Fig. 7

10. Connect the poly tubing from inlet of the water dispenser to the outlet fitting on the flow meter



Fig. 8

11. Remove the red cap from the filter and install on the filter head turning clockwise.



**Fig. 9**

12. Remove the filter monitor from the back of the box and insert the supplied batteries. Once installed, the monitor will light up. The monitor can now be put back on the back of the box. Make sure it is positioned so that it can be viewed thru the window in the front cover once it is installed.



**Fig. 10**

13. Turn on the water and check for leaks. Repair as needed
14. Run approximately 1 gallon of water thru the fixture. This flushing procedure purges air and fine carbon particles from the filter. After 1 gallon of water has been purged carefully inspect all water connections for leaks

15. After peeling the protective covering from the front cover, hook the tabs on the top into the slots on the top of the box. Slide the cover down and install the supplied screw. Once done keep the bit as it will be needed for replacing the filter.



Fig. 11

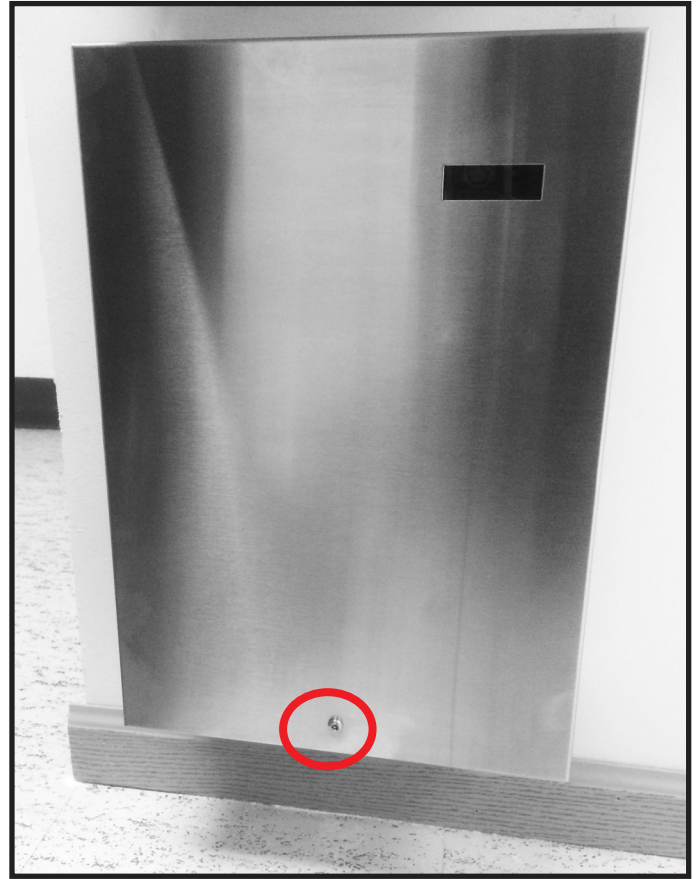


Fig. 12

## OPERATING INSTRUCTIONS FOR THE FILTER MONITOR

1. The filter monitor backlight automatically turns on when there is water flowing through it. The blue backlight will turn off after approximately 10 seconds but will display the remaining capacity the entire time water is flowing. To conserve battery life, the display will automatically turn off in 10 seconds when there is no water flowing. The power of the two batteries could last for approximately one year.
2. The flow meter will generate an audible alert and the digits on the LCD will blink red when the remaining capacity reaches zero.
3. To reset, press the reset button for four seconds. The "RESET" on the LCD blinks twice and the remaining capacity is reset to the original programming value.
4. When the battery power is low the monitor generates an audible alert and the empty battery symbol on the upper right corner blinks. The alert status will be released when the batteries are replaced with new one. **NOTE:** the data of the last status will be memorized when powered off.

*Halsey Taylor*®

2222 CAMDEN COURT  
OAK BROOK, IL 60523  
630.574.3500

FOR PARTS CONTACT YOUR LOCAL DISTRIBUTOR OR VISIT OUR WEBSITE - [WWW.HALSEYTAYLOR.COM](http://WWW.HALSEYTAYLOR.COM)

PRINTED IN U.S.A.

# NOTICE

To receive maximum benefit from your Halsey Taylor® WaterSentry® VII filters, note the installation dates below, and change according to the following guidelines.

## Halsey Taylor® Part No. 55897C WaterSentry® VII -- Lead Reduction Filter

Change every 1,500 gallons, or once a year -- whichever occurs first.

**-- KEEP THIS SHEET IN A HANDY LOCATION --**

DATE INSTALLED	MODEL (TYPE OF FILTER)	SERVICE PERSON	DATE INSTALLED	MODEL (TYPE OF FILTER)	SERVICE PERSON

*Halsey Taylor*<sup>®</sup>  
2222 CAMDEN COURT  
OAK BROOK, IL 60523  
630.574.3500  
PRINTED IN U.S.A.

FOR PARTS, CONTACT YOUR LOCAL DISTRIBUTOR OR VISIT OUR WEBSITE [WWW.HALSEYTAYLOR.COM](http://WWW.HALSEYTAYLOR.COM)