



Contour™ Barrier-Free

Rated for Indoor /Outdoor Use



Model HDFBLEBP



Standard Finish is Stainless Steel

Optional Accessories (extra cost):

- Cane Apron (HDFCANE)
- Access Panels (2) (APHT)
- 1500 Gal Filter (2 Recommended) (HWF172) - Indoor installation only

Each HDFBLEBP consists of 1 carton of the following:

- Fountain
- Panel
- Misc. Parts

GENERAL

Two face-mounted 14 gauge heavy duty fountains, one-piece, non-corrosive stainless steel type 300 series with brushed satin finish and one piece vandal resistant drain. Larger seamless drawn contour-formed basins with softly rounded corners and edges reduce splatter, insures proper drainage and prevents standing waste water. Designed to be easily accessible to both physically challenged and able-bodied individuals. Ideally suited for installation in public areas. When properly installed, model meets state and federal requirements as defined by the Americans with Disabilities Act.

BUBBLER

Vandal resistant bubbler is one-piece, heavy-duty construction with integral hood guard design to prevent contamination from other users, airborne deposits and tampering.

PUSH BAR ACTUATION MECHANISM

Self-closing, vandal-resistant pushbutton does not require grasping or twisting.

PANELS

Back panel constructed of stainless steel, type 300 series with satin finish. Solid 14 gauge heavy duty stainless steel underplate and vandal resistant pinned torx screws. 1/4" thick heavy duty stainless steel mounting backplate on fountain arm.

AUTOMATIC STREAM HEIGHT REGULATOR

Self-closing assembly is located inside unit to prevent tampering. Unit resists corrosion and liming. A constant stream height is automatically maintained under line pressures that vary from 20 to 105 psi.



INLET STRAINER

Easily cleaned in-line strainer screen traps particles of 140 microns or larger before they enter the waterway.

WATER INLET - 3/8" O.D. Tubing. **DRAIN OUTLET** - 1-1/4" tube outlet for 1-1/4" slip joint connection. **Trap and service stop not included.**

SUGGESTED SPECIFICATIONS

Both fountains shall include pushbutton on the front. Both shall include contour-formed basins to eliminate splashing and standing water, and shall have rounded corners and edges. Each bubbler shall be one-piece, heavy-duty, vandal-resistant type with integral hood guard and anti-squirt feature. Fountain shall comply with ANSI 117:1 and ADA for visual and motion disabilities. The manufacturer shall certify the unit to meet the requirements of NSF/ANSI 61, and the Safe Drinking Water Act.

CAPACITIES CHART				
Model	Order ID	Approx. Ship Wt.	ADA Compliant	NSF/ANSI 61 Certified
HDFBLEBP	7435005783	74 lbs.	•	•

NOTE: Continued product improvement makes specification sheets subject to change without notice.

HDFBLEBP Heavy Duty BI-Level Fountain with Back Panel



Halsey Taylor[®]
Satisfying Thirsts Since 1912

Contour™ Barrier-Free

Rated for Indoor/Outdoor Use

(CONTINUED)

MOUNTING INSTRUCTIONS

Refer to diagrams for rough-in of plumbing. Mount wall plate assembly to wall per the installation instructions. Hang fountain panel over the wall plate assembly. Attach fountains to wall plate assembly. Water service line and waste line are to be assembled as required. Final check for leaks and correct functions of fountain should be made. (For more details, see the installation instructions.)

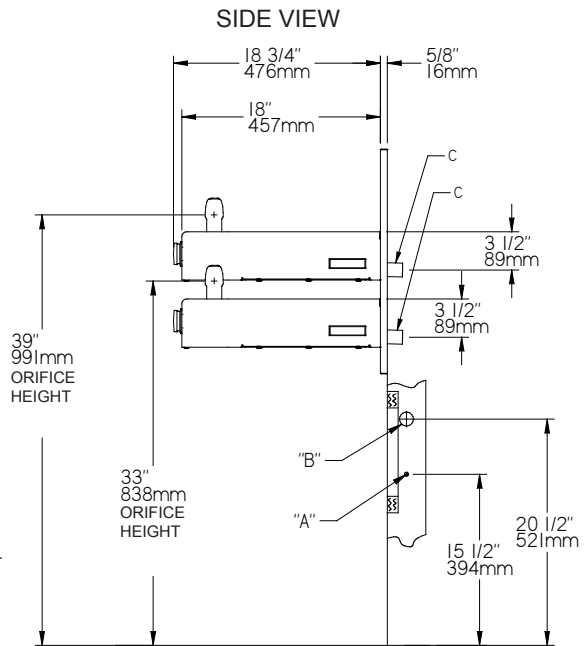
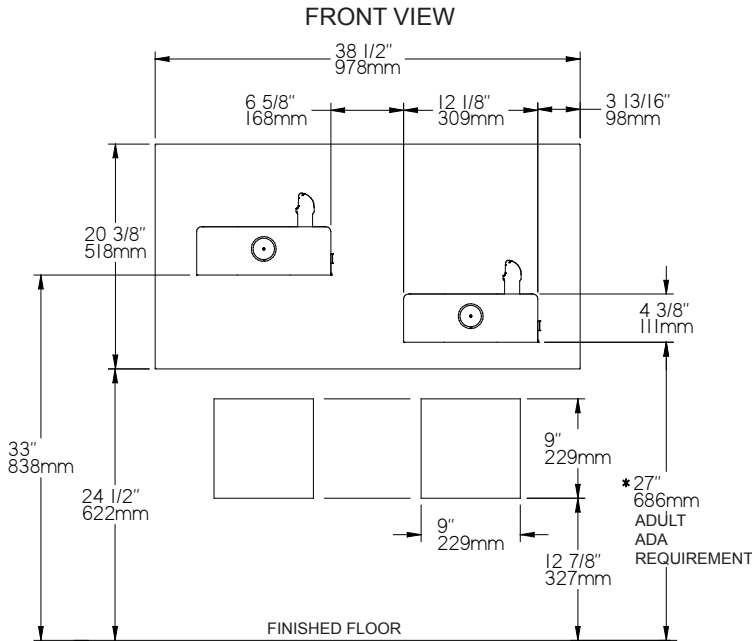
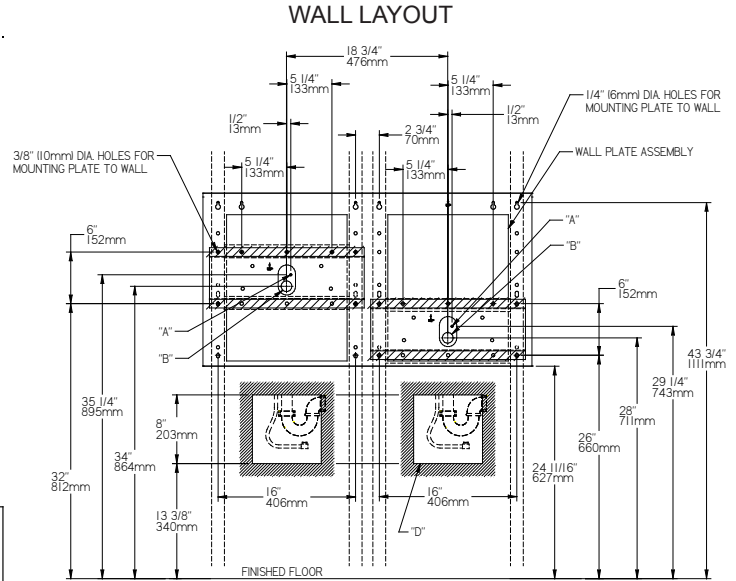
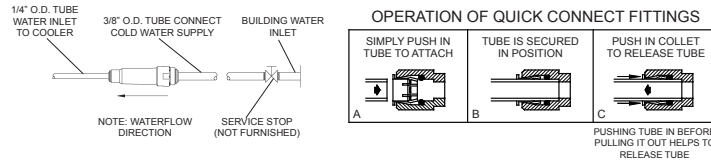
CAUTION - Fountain must be securely bolted to wall.

OPERATING PRESSURES

Supply water 20 - 105 psi maximum

Installation requires trap to be installed in wall. A service supply stop must be installed at the fountain inlet line. Trap and service stop not included.

Note: For wall support required locations see installation instructions provided with panel and fountains.



LEGEND

- A = Recommended water supply location 3/8" O.D. unplated copper tube connect stubbed 1-1/2" (38mm) from wall shut off by others.
- B = Recommended location for waste outlet 1-1/4" O.D. drain.
- C = 1-1/4" Drain furnished.
- D = Opening for optional APHT access panel. NOTE: Reinforce the wall in the shaded areas.

* Adult ADA Requirement.

*24" (610mm) for Child ADA, adjust other measurements accordingly.

Halsey Taylor[®]

Job Name: _____

Model: _____ Qty. _____

Contact: _____

Approval Signature: _____

Notes: _____