



Halsey Taylor®

Satisfying Thirsts Since 1912

Endura II™ Hose Bib Kits Model 4470NLHB* (Non-Locking)

Model 4471LHB* (Locking)

**Please see table below for entire sku*

GENERAL

These kits will modify units to provide the added ability to connect garden hoses or fill pails in outdoor applications. Ideal for golf courses, ball parks, and swimming pools for irrigation purposes.

Panel has textured powder coat finish and E-Coat immersion for year-round beauty with minimum maintenance. The E-Coat immersion process coats the outside and inside of the panel for the ultimate in corrosion protection.

This accessory is designed to replace the existing access cover on units in the Endura II™ Tubular Pedestal Fountain series. It is not designed for sub-freezing applications.

Locking Hose Bib kit includes panel and a door that can be secured with a standard padlock (not included).

Water inlet is 1/2" tubing (provided).

***When ordering use part #: 4470NLHB* (non-locking hose bib)
4471LHB* (locking hose bib)**

***FINISH COLOR OPTIONS – Choose color option to complete your model number, add as suffix example: 4470NLHBEVG or 4471LHBEVG**

Matte finish: ☐ Evergreen = **EVG**

Gloss finish:

- | | | |
|---|--|--|
| <input type="checkbox"/> Beige = BGE | <input type="checkbox"/> Gray = GRY | <input type="checkbox"/> Terracotta = TER |
| <input type="checkbox"/> Black = BLK | <input type="checkbox"/> Orange = ORN | <input type="checkbox"/> White = WHT |
| <input type="checkbox"/> Blue = BLU | <input type="checkbox"/> Purple = PUR | <input type="checkbox"/> Yellow = YLW |
| <input type="checkbox"/> Brown = BRN | <input type="checkbox"/> Red = RED | |

Now Available
in 12 Colors!



Hose Bib shown on Model 4400EVG
Endura II™ Pedestal Fountain

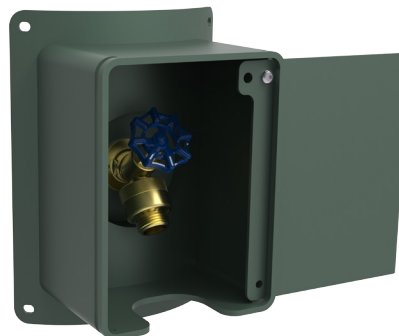
Non-Locking Hose Bib Kit (Model 4470NLHBEVG Shown)



Locking Hose Bib Kit (Model 4471LHBEVG Shown)



Locking Hose Bib Kit (open) (Model 4471LHBEVG Shown)



Shipping Weight: 6 lbs. (Non-Locking Hose Bib)
Shipping Weight: 13 lbs. (Locking Hose Bib)

Note: Continued product improvement makes specifications subject to change without notice. See Halsey Taylor website for most current spec sheet.

Endura II™ Hose Bib Kits

Model 4470NLHB* (Non-Locking)

Model 4471LHB* (Locking)

*Please see table for entire sku



Halsey Taylor®

Satisfying Thirsts Since 1912

Parts List		
Item No.	Part No.	Description
1	75624C	Fitting - Hose Vacuum Breaker
2	75619C	Faucet - 1/2" NPT
3	45836C*	Panel - Access w/Bib Recess
4	70977C	Nut - Lock 1/2" Conduit
5	70972C	Elbow - 90° x 1/2" MPT
6	75623C	Fitting - Tee 1/2" x 1/2" x 3/8"
7	66555C	Tube - 1/2" O.D. x 36.00" Lg.
8	66475C	Tube - 3/8" O.D. Tee to Strainer
9	66641C	Tube - 1/2" O.D. x 4.38" Lg.
10	45838C*	Door - locking Hose Bib
11	75535C	Screw - 1/4-20 x 3/4" Torx
12	45837C*	Panel - Locking Hose Bib
not shown	75521C	Bit - Pinned Torx T-27 (NS)

*Choose color option from page 1 to complete your item number, add as suffix. Example: 45836C-**EVG**, 45837C-**EVG**, or 45838C-**EVG**

INSTALLATION INSTRUCTIONS

1. Shut off water supply to fountain.
2. Determine location for installation of **Hose Bib Accessory**. Remove existing access cover plate. (This accessory is designed to replace the existing access cover.)
3. Disconnect the **fountain water line** from the **main water supply**. Connect Tube (Item 8) to existing fountain strainer as shown below.
4. Connect Tee (Item 6) to Tube (Item 8). Connect main water supply to Tee using 1/2" Copper Tube (Item 9). **DO NOT TURN MAIN WATER SUPPLY ON AT THIS TIME!**
5. Connect Hose Bib Accessory water line to the Tee and to the Elbow (Item 5) on the Access Panel (Item 3) using 1/2" Copper Tube (Item 7) as shown below, maintain loop in coil to facilitate installation and removal of Access Panel.
6. Turn on main water supply. Check for leaks. If there are leaks, turn off main water supply and correct the water leaks as required. After insuring that all connections are leak free, leave main water supply on and replace any panels that may have been removed in the installation process.
7. Assemble Hose Bib Accessory to the main fountain body.

