

Description

456 series slope ceiling trims are 6-inch aperture Coilex® baffles for use in the Halo HL6 LED Slope Ceiling System. The series is also listed with the H645 incandescent slope ceiling housing. The 456 slope ceiling coilex baffle trims feature a fully contoured continuous form designed specifically for use in slope ceiling applications.

Catalog #		Type
Project		
Comments		Date
Prepared by		

Specification Features

456 series slope ceiling trims are 6-inch aperture coilex baffles offered in White (W) and Black (P). 456 series baffles feature metal trim rings in matte white paint finish. The precision formed coilex baffle provides attractive visual presence. The white metal trim ring is a floating ring that may be interchanged with the TRM6 designer trim ring series (see accessories).

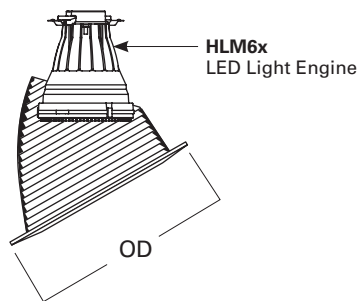
Coil springs attach to slots in the housing aiming mechanism and hold the trim flush to the ceiling.

Slope Ceiling Housings

Compatible with HL6 LED and H645 slope ceiling system housings; see specification sheets for further details:

- HL612ICAT (LED)
- HL618TAT (LED)
- H645IC (Incandescent)

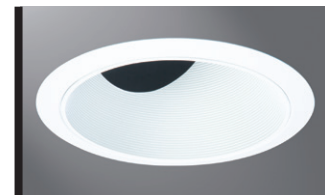
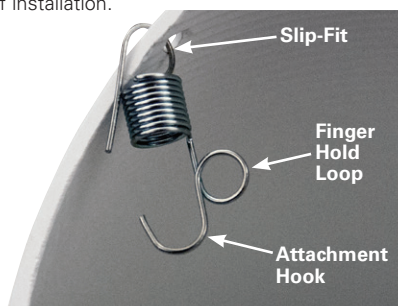
Trim Dimensions



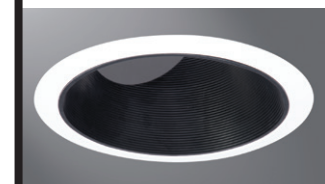
Outside Diameter: 7-1/4" [184mm]

Trim Attachment – Coil Springs

Coil spring hook attaches to vertical slots in the sides of aiming mechanism. Slip-fit on spring allows positioning of finger hold loop inside the trim for ease of installation.



456W
White Baffle



456P
Black Baffle

456 Series Slope Trims

6-Inch Coilex® Baffle

For use with Halo LED slope ceiling system:
HL6 LED

Ordering Information

Sample Number: 456W

Trim	Finish	Accessories
456 = 6" slope ceiling Coilex baffle	W = White Coilex baffle, white metal trim ring P = Black Coilex baffle, white metal trim ring	TRM6C = Chrome metal TRM6MB = Black metal TRM6P = White metal TRM6SN = Satin nickel metal TRM6TBZ = Tuscan bronze metal TRM7MB = Black polymer