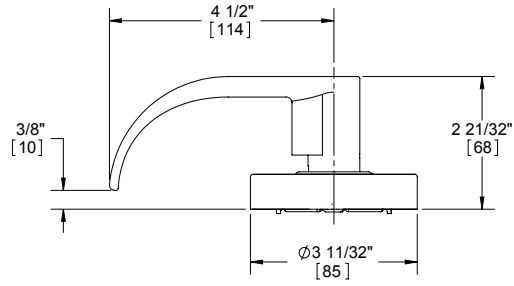
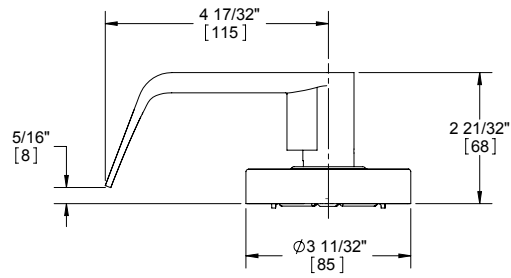


2500 Series - Lever Options

ARCHER LEVER



WITHNELL LEVER



2500 Series - Grade 2 Cylindrical - Standard Duty Commercial

WARRANTY

Five year warranty

FEATURES

- No exposed mounting screws
- Non-handed
- Conventional cylinder and small format interchangeable core option available

Applications:

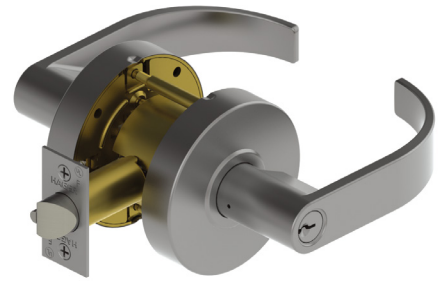
- Standard duty commercial
- Standard door prep - 2-1/8" (54 mm) diameter (bore)
- Latch hole - 1" (25.4 mm) diameter (cross bore)

Certifications:

- Meets BHMA ANSI A156.2, Series 4000, Grade 2
- ADA Compliant ANSI A117.1 Accessibility Code
- UL/cUL Listed for all functions up to 3 hours "A" label single doors
- UL 10C Positive Pressure Related

Lever Options:

Archer, Withnell levers



SPECIFICATIONS

Exposed Trim:

- Wrought brass, bronze, and stainless steel
- Lever is zinc based, plated to match BHMA symbols

Rose Diameter:

3-11/32" (85 mm)

Lock Chassis:

- Heavy gauge steel, zinc dichromated for corrosion resistance
- "Non-clutching" exterior lever on keyed functions
- Removable thru-bolts
- Failure to install thru-bolts and removable screw posts voids BHMA certification, UL rating, and warranty

Keys:

Two operating keys supplied per lock

Cylinders/Cores:

- Brass, keyed different, Schlage C keyway standard
- Cylinder drilled 6-pin, keyed 5-pin
- Other keying options, including keyed 6-pin, available from the factory (see cylinders, cores and keying sections).
- Zero bit cylinders will be 6 pin keyed – standard
- Small Format Interchangeable Core option available
- SFIC uncombined or combined, brass 6- or 7-pin cores sold separately

Door Thickness:

1-3/8" - 1-3/4" (35 mm - 45 mm)

Backset:

- 2-3/4" (70 mm) - Standard
- 2-3/8" (60 mm) - Optional

Latchbolt:

- 1/2" (13 mm) throw, stainless steel
- 1-1/8" x 2-1/4" (29 mm x 57 mm) faceplate for 2-3/4" (70 mm) backset
- 1" x 2-1/4" (25 mm x 57 mm) faceplate for 2-3/8" (60 mm) backset
- Deadlocking latchbolt prevents manipulation when door is closed; keyed functions and 25 function only

Strike:

- 3935 ASA 1-1/4" x 4-7/8" (32 mm x 124 mm) strike standard
- Optional strikes available

Functions:

10 Passage, 17 Dummy, 25 Exit Only, 27 Double Dummy, 40 Privacy, 50 Entry/Office, 53 Entry, 70 Classroom, 80 Storeroom

Notes:

Blank plate projection is 13/16" (21 mm) for function 25

FINISHES

US10B, US26D, BLK