



3600 Series - Lever

Description: Tubular Locks > 3600 Series - Grade 2 - Lever



Applications	<ul style="list-style-type: none"> - Heavy - Duty Residential - Medium - Duty Commercial - Standard Door Prep: 2 1/8" Diameter (Cross Bore) - Latch Hole: 1" Diameter (Edge Bore) 	Door Thickness	- 1 3/8" - 1 3/4"
Certifications	<ul style="list-style-type: none"> - BHMA Certified ANSI A156.2, Series 4000, Grade 2 - ADA Compliant ANSI A117.1 Accessibility Code - UL/cUL Listed for all functions up to 3 hours for "A" label single doors - UL10C/UBC 7-2 (1997) Positive Pressure Rated - UL10B Neutral Pressure Rated 	Backset	- Adjustable 2 3/8" - 2 3/4", Preset at factory for 2 3/8"
Exposed Trim	<ul style="list-style-type: none"> - Wrought Brass or Bronze - Lever is zinc based, plated to match BHMA symbols 	Latchbolt	<ul style="list-style-type: none"> - 1/2" Throw - Stainless Steel - 2 1/4" X 1" Faceplate - Deadlocking latchbolt prevents manipulation when door is closed; keyed functions only
Lock Chassis	<ul style="list-style-type: none"> - Heavy gauge steel, zinc dichromated for corrosion resistance 	Strikes	<ul style="list-style-type: none"> - ANSI 1 1/4" X 4 7/8" strike - "T" strike 1 1/8" x 2 3/4" - Optional
Keys	<ul style="list-style-type: none"> - Two brass keys per lock 	Functions	<ul style="list-style-type: none"> - 53 Entry - 80 Storeroom - 40 Privacy - 10 Passage - 17 Dummy
Rose Diameter	- 3"	Finishes	- US3, US4, US10, US10B, US26, US26D
Cylinders	<ul style="list-style-type: none"> - Standard Core - Brass 6-pin - Keyed Different - C Keyway - Interchangeable Core - Brass 6 & 7 pin - Uncombined and Combined - Other keying options available from the factory 	Option	- Tactile Knurling (Levers Only)



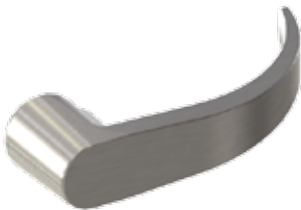
HAGER LOCKSET KNOB AND LEVER OPTIONS



APOLLO KNOB

Available on:

- 3400 Series
- 3500 Series



ARCHER LEVER

Available on:

- 3400 Series
- 3400 Series (Electrified)
- 3500 Series
- 3600 Series
- 3700 Series
- 3800 Series - Escutcheon
- 3800 Series - Sectional
- 3800 Series - Escutcheon (Electrified)
- 3800 Series - Sectional (Electrified)
- 2500 Series



AUGUST LEVER

Available on:

- 3400 Series
- 3400 Series (Electrified)
- 3500 Series
- 3600 Series
- 3700 Series
- 3800 Series - Escutcheon
- 3800 Series - Sectional
- 3800 Series - Escutcheon (Electrified)
- 3800 Series - Sectional (Electrified)



WILLIAM LEVER

Available on:

- 3800 Series - Escutcheon
- 3800 Series - Sectional
- 3800 Series - Escutcheon (Electrified)
- 3800 Series - Sectional (Electrified)



WITHNELL LEVER

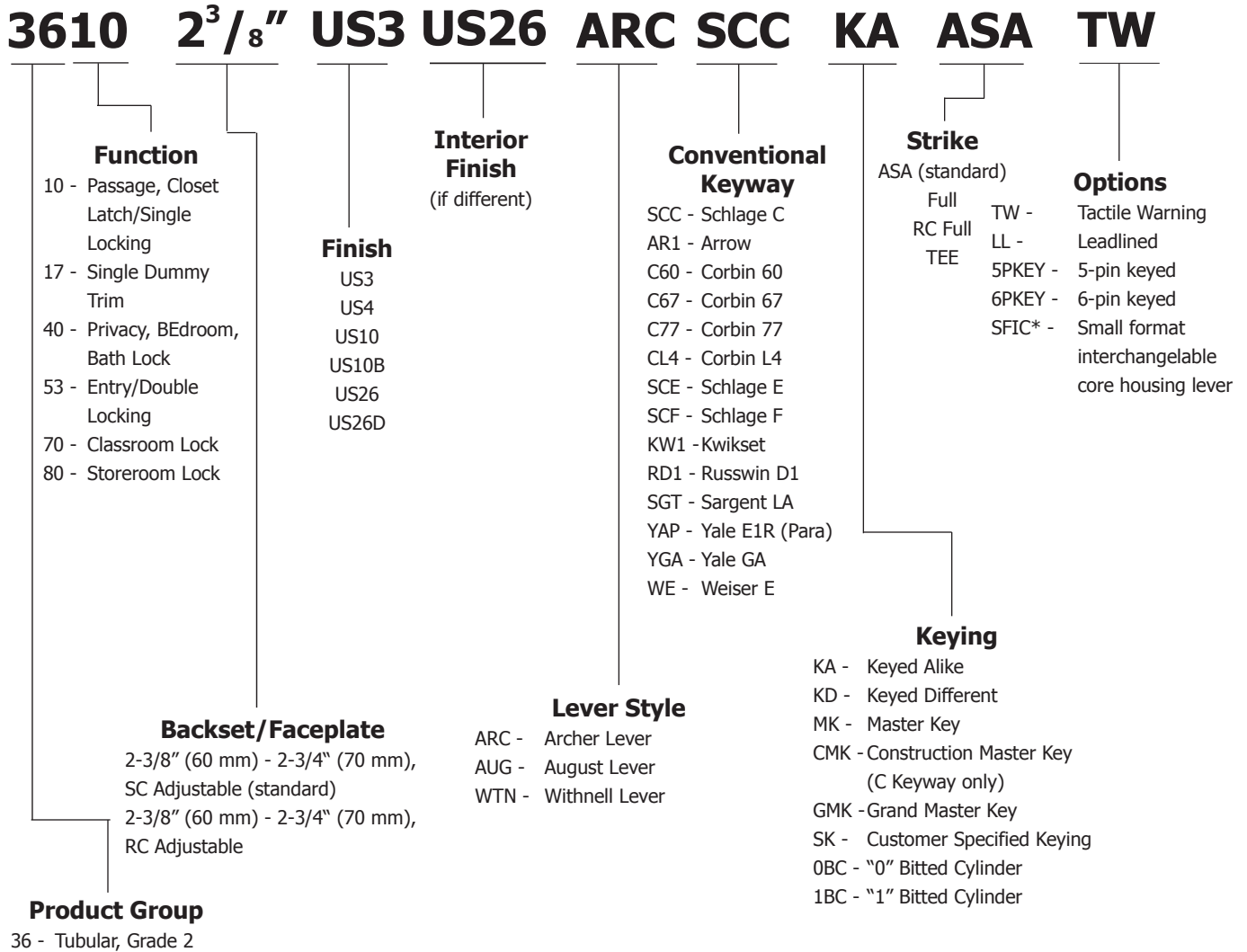
Available on:

- 3400 Series
- 3400 Series (Electrified)
- 3500 Series
- 3600 Series
- 3700 Series
- 3800 Series - Escutcheon
- 3800 Series - Sectional
- 3800 Series - Escutcheon (Electrified)
- 3800 Series - Sectional (Electrified)
- 2500 Series





3600 SERIES LOCKS HOW TO ORDER



Notes:

1. If master-keyed, include master key instruction sheet with order (available in catalog or online).

* Small format interchangeable core sold separately. Available in Best Keyways only, A Standard.

Ordering example: 3653 ADJ 2-3/8" to 2-3/4" US26D WTN NC ASA SFIC





Hager Companies, Inc
139 Victor Street
Saint Louis, MO 63104

HAGER TEST REPORT NO.: LS04012

EVALUATION OF

**Hager Companies
3600 Series Grade 2 Lever Lockset**

TEST PARAMETERS:

This report covers tests and/or evaluations performed using the following standard(s) as a guideline:
ANSI/BHMA A156.2-2003 American National Standard for Bored and Preassembled Locks & Latches.
Testing was conducted by Intertek Testing Services NA, Inc., at their Middleton, WI facility.

DESCRIPTION OF TEST SAMPLES:

Samples were identified as Model 3600 Grade 2 Tubular Lever Lockset.
Samples were received in good condition on 6/01/2004.

TEST DATES: 6/03/2004 – 6/14/2004

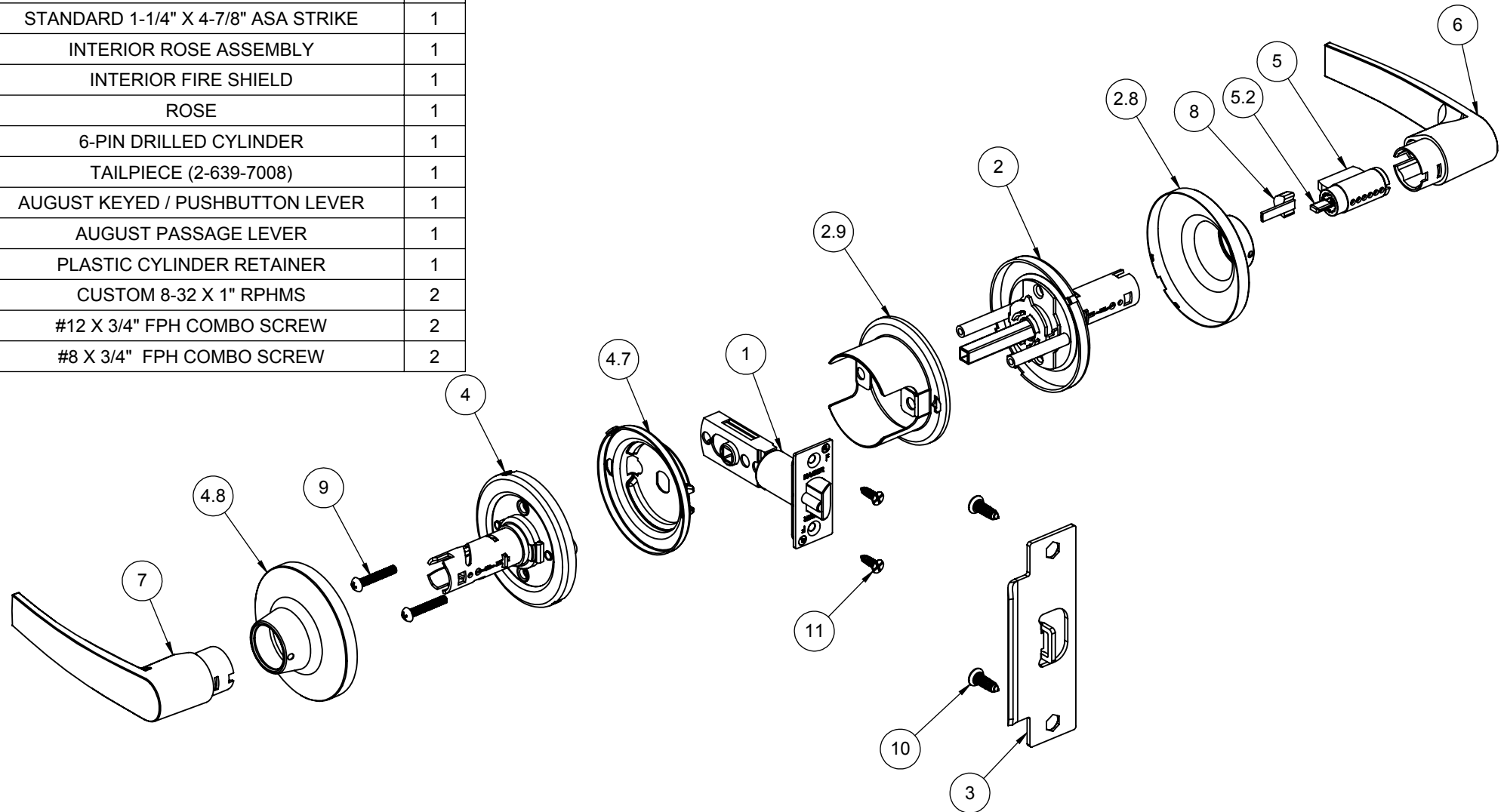
RESULTS: COMPLIANT

The testing results of specific subsections are summarized below.


Subsection	Test Description	Test Results
9	Operational Tests	Compliant
10	Strength Tests	Compliant
11	Cycle Tests	Compliant
12	Performance after Cycle Tests	Compliant
13	Material Evaluation Tests	Compliant

This report summary was prepared as an account of work performed by a Third-Party Nationally Recognized Testing Laboratory. The information included in this report is certified extracts from the original test records, as contained in the permanent records of Hager Companies, Inc. Copies of the original third-party test reports are available upon request.

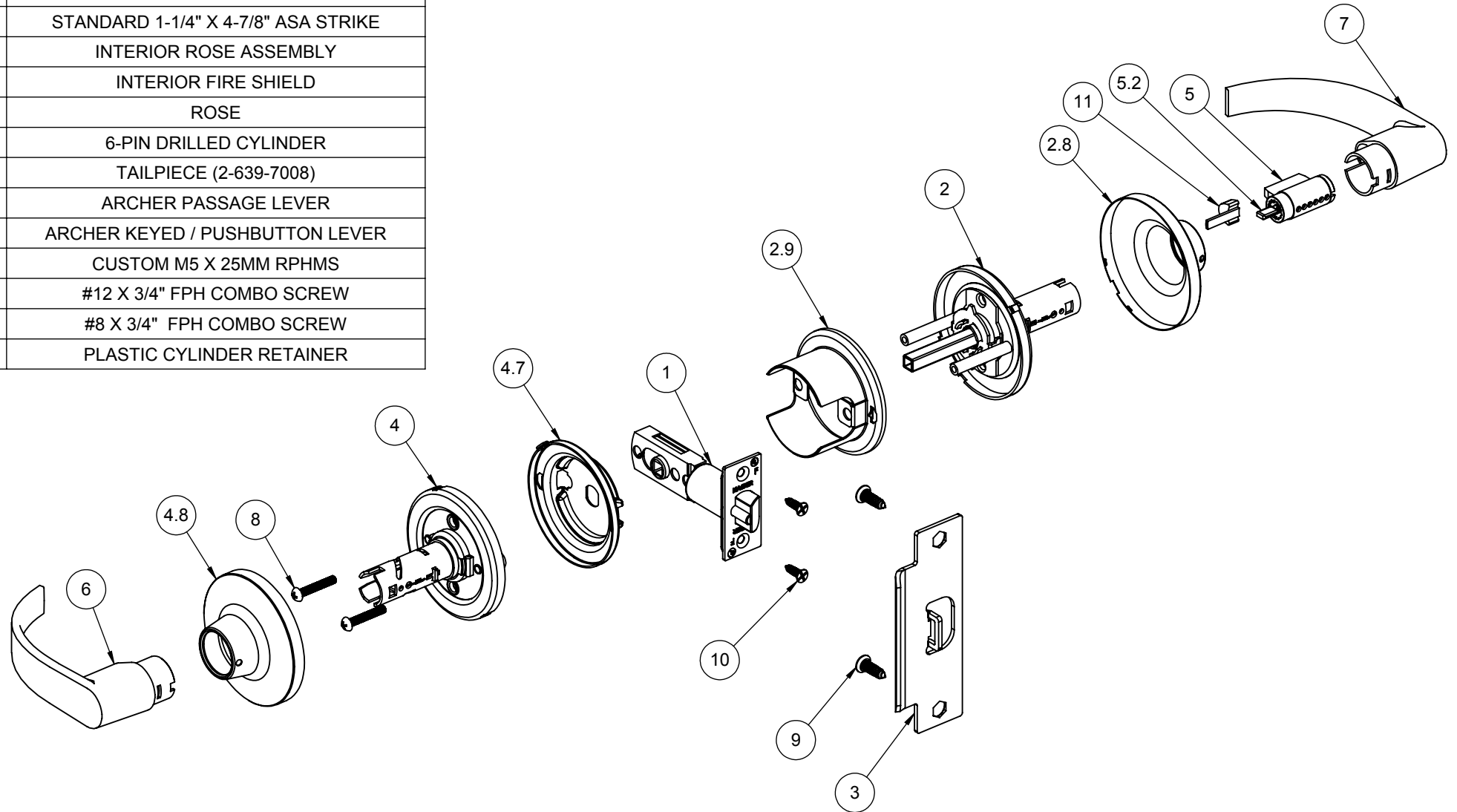
ITEM NO.	FILE NAME	DESCRIPTION	QTY.
1	S-LS00519	3952 ADJ DEAD LATCH	1
2	S-LS00505	EXTERIOR ROSE ASSEMBLY	1
2.8	S-LS00494	ROSE	1
2.9	S-LS00493	EXTERIOR FIRE SHIELD	1
3	S-LS00236	STANDARD 1-1/4" X 4-7/8" ASA STRIKE	1
4	S-LS00505	INTERIOR ROSE ASSEMBLY	1
4.7	S-LS00526	INTERIOR FIRE SHIELD	1
4.8	S-LS00494	ROSE	1
5	S-LS00617	6-PIN DRILLED CYLINDER	1
5.2	S-LS00220	TAILPIECE (2-639-7008)	1
6	S-LS00027	AUGUST KEYED / PUSHBUTTON LEVER	1
7	S-LS00027	AUGUST PASSAGE LEVER	1
8	S-LS00816	PLASTIC CYLINDER RETAINER	1
9	Round Head Screw_AI	CUSTOM 8-32 X 1" RPHMS	2
10	S-LS00882	#12 X 3/4" FPH COMBO SCREW	2
11	S-LS00882	#8 X 3/4" FPH COMBO SCREW	2



NOTE 1: (2) KEYS PROVIDED
NOTE 2: AUGUST LEVER SHOWN, OTHERS OPTIONAL

 PROPRIETARY & CONFIDENTIAL THE INFORMATION CONTAINED IN THIS DRAWING IS THE SOLE PROPERTY OF HAGER COMPANIES. ANY REPRODUCTION IN PART OR AS A WHOLE WITHOUT THE WRITTEN PERMISSION OF HAGER COMPANIES IS PROHIBITED.	HAGER RESERVES THE RIGHT TO MAKE DESIGN CHANGES WITHOUT NOTICE. CALL HAGER ENGINEERING AT 1-800-325-9995 FOR THE LATEST REVISION DATE OF TEMPLATE.			DRAWN: MRJ 8/20/2009	3680 GRADE 2 - STOREROOM LEVERSET (TUBULAR)		
	MATERIAL:	ENG. APPR.: -	Q.A.:				
	FINISH:	TOLERANCES: FRACTIONAL: ±0.015" ANGULAR: MACH: ±1° BEND: ±1° TWO PLACE DECIMAL: ±0.01" THREE PLACE DECIMAL: ±0.004"			SIZE: B	DWG. NO.: S-LS00867	REV.: 02
	DO NOT SCALE DRAWING	SCALE: 1:12	WEIGHT:	SHEET 1 OF 1			

ITEM NO.	QTY.	DRAWING NO	DESCRIPTION
1	1	S-LS00519	3952 ADJ DEAD LATCH
2	1	S-LS00505	EXTERIOR ROSE ASSEMBLY
2.8	1	S-LS00494	ROSE
2.9	1	S-LS00493	EXTERIOR FIRE SHIELD
3	1	S-LS00236	STANDARD 1-1/4" X 4-7/8" ASA STRIKE
4	1	S-LS00505	INTERIOR ROSE ASSEMBLY
4.7	1	S-LS00526	INTERIOR FIRE SHIELD
4.8	1	S-LS00494	ROSE
5	1	S-LS00617	6-PIN DRILLED CYLINDER
5.2	1	S-LS00220	TAILPIECE (2-639-7008)
6	1	S-LS00496	ARCHER PASSAGE LEVER
7	1	S-LS00496	ARCHER KEYED / PUSHBUTTON LEVER
8	2	Round Head Screw_Al	CUSTOM M5 X 25MM RPHMS
9	2	S-LS00882	#12 X 3/4" FPH COMBO SCREW
10	2	S-LS00882	#8 X 3/4" FPH COMBO SCREW
11	1	S-LS00816	PLASTIC CYLINDER RETAINER



NOTE 1: (2) KEYS PROVIDED
NOTE 2: ARCHER LEVER SHOWN, OTHERS OPTIONAL



PROPRIETARY & CONFIDENTIAL
THE INFORMATION CONTAINED IN THIS DRAWING IS THE SOLE PROPERTY OF HAGER COMPANIES. ANY REPRODUCTION IN PART OR AS A WHOLE WITHOUT THE WRITTEN PERMISSION OF HAGER COMPANIES IS PROHIBITED.

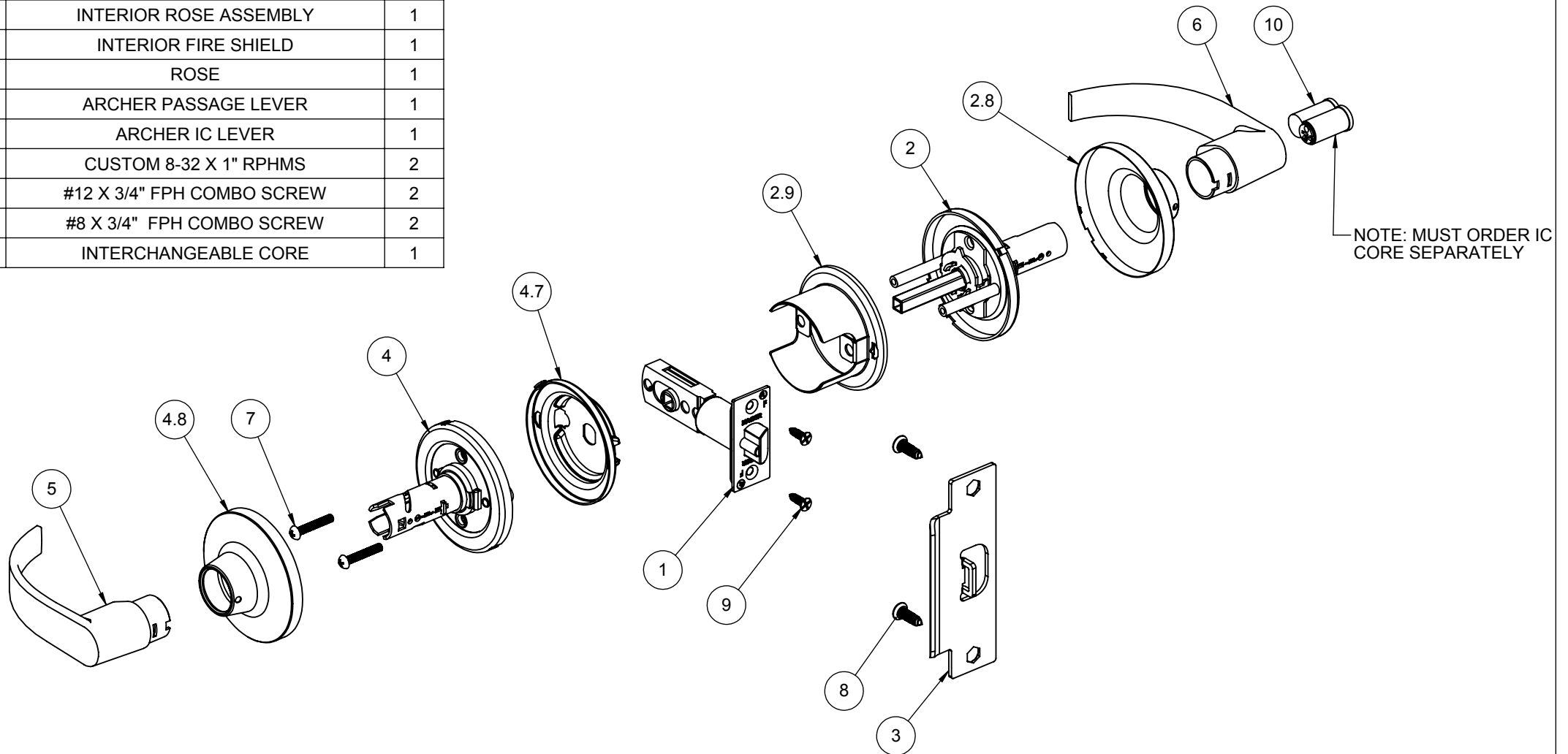
HAGER RESERVES THE RIGHT TO MAKE DESIGN CHANGES WITHOUT NOTICE. CALL HAGER ENGINEERING AT 1-800-325-9995 FOR THE LATEST REVISION DATE OF TEMPLATE.

MATERIAL	
FINISH	
DO NOT SCALE DRAWING	


DRAWN	MRJ	8/20/2009
ENG. APPR.	-	-
TOLERANCES:		
FRACTIONAL: ±0.015"		
ANGULAR: MACH: ±1° BEND: ±1°		
TWO PLACE DECIMAL: ±0.01"		
THREE PLACE DECIMAL: ±0.004"		

3670			GRADE 2 - CLASSROOM LEVERSET (TUBULAR)	
SIZE	DWG. NO.	REV.		
B	S-LS00868			02
SCALE: 1:12	WEIGHT:	SHEET 1 OF 1		

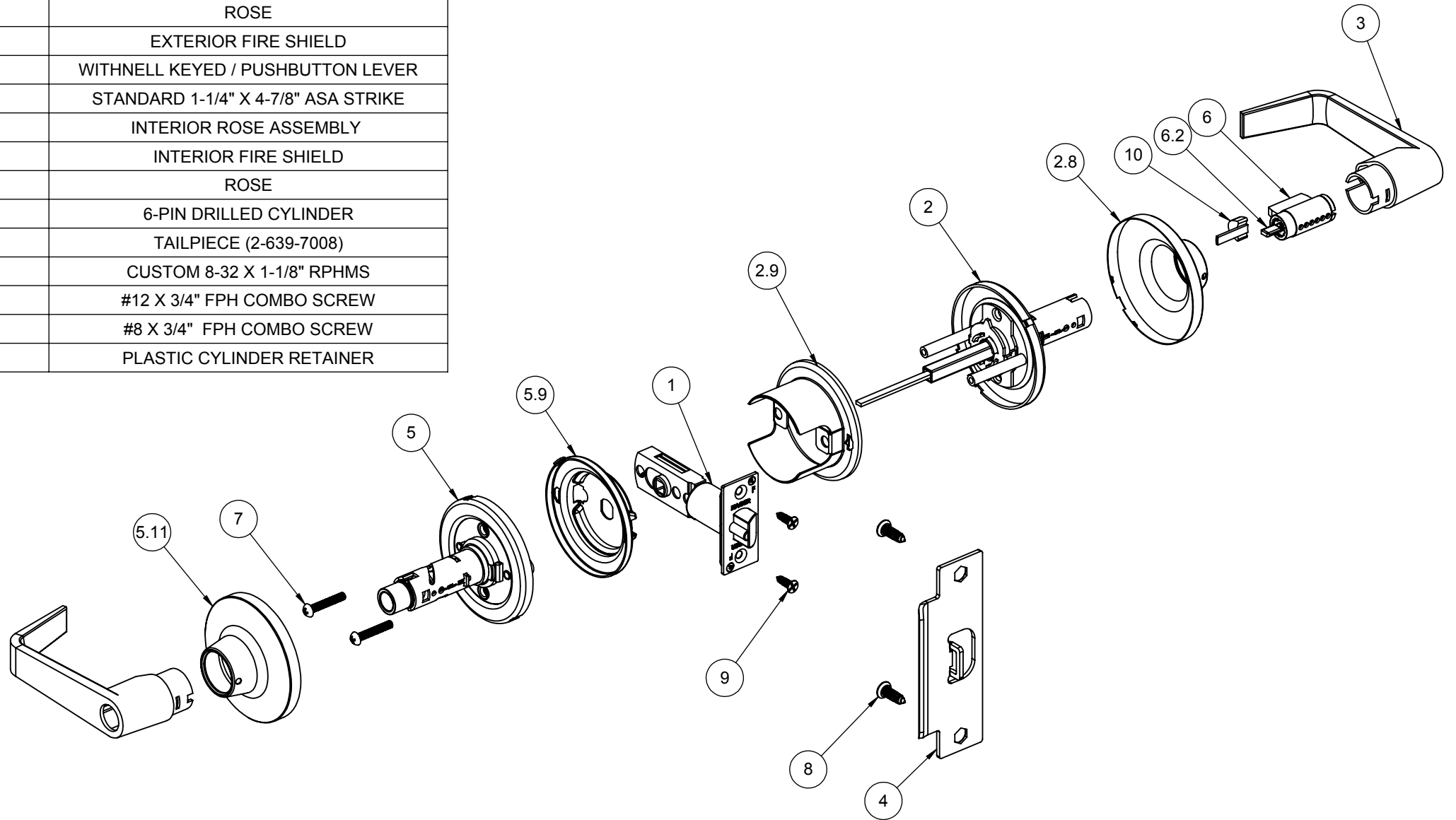
ITEM NO.	FILE NAME	DESCRIPTION	QTY.
1	S-LS00519	3952 ADJ DEAD LATCH	1
2	S-LS00505	EXTERIOR ROSE ASSEMBLY	1
2.8	S-LS00494	ROSE	1
2.9	S-LS00493	EXTERIOR FIRE SHIELD	1
3	S-LS00236	STANDARD 1-1/4" X 4-7/8" ASA STRIKE	1
4	S-LS00505	INTERIOR ROSE ASSEMBLY	1
4.7	S-LS00526	INTERIOR FIRE SHIELD	1
4.8	S-LS00494	ROSE	1
5	S-LS00496	ARCHER PASSAGE LEVER	1
6	S-LS00496	ARCHER IC LEVER	1
7	Round Head Screw_AI	CUSTOM 8-32 X 1" RPHMS	2
8	S-LS00882	#12 X 3/4" FPH COMBO SCREW	2
9	S-LS00882	#8 X 3/4" FPH COMBO SCREW	2
10	S-LS00550	INTERCHANGEABLE CORE	1



NOTE: ARCHER LEVER SHOWN, OTHERS OPTIONAL

 <p>PROPRIETARY & CONFIDENTIAL THE INFORMATION CONTAINED IN THIS DRAWING IS THE SOLE PROPERTY OF HAGER COMPANIES. ANY REPRODUCTION IN PART OR AS A WHOLE WITHOUT THE WRITTEN PERMISSION OF HAGER COMPANIES IS PROHIBITED.</p>	<p>HAGER RESERVES THE RIGHT TO MAKE DESIGN CHANGES WITHOUT NOTICE. CALL HAGER ENGINEERING AT 1-800-325-9995 FOR THE LATEST REVISION DATE OF TEMPLATE.</p>	DRAWN	MRJ	8/20/2009	<p>3670 GRADE 2 - CLASSROOM IC LEVERSET (TUBULAR)</p>		
		ENG. APPR.	-	-			
		MATERIAL	Q.A.			SIZE	DWG. NO.
		FINISH	TOLERANCES: FRACTIONAL: ±0.015" ANGULAR: MACH: ±1° BEND: ±1° TWO PLACE DECIMAL: ±0.01" THREE PLACE DECIMAL: ±0.004"			B	S-LS00869
DO NOT SCALE DRAWING					REVISION	01	
					SCALE: 1:12	WEIGHT:	
					SHEET 1 OF 1		

ITEM NO.	QTY.	DRAWING NO	DESCRIPTION
1	1	S-LS00519	3952 ADJ DEAD LATCH
2	1	S-LS00505	EXTERIOR ROSE ASSEMBLY
2.8	1	S-LS00494	ROSE
2.9	1	S-LS00493	EXTERIOR FIRE SHIELD
3	2	S-LS00490	WITHNELL KEYED / PUSHBUTTON LEVER
4	1	S-LS00236	STANDARD 1-1/4" X 4-7/8" ASA STRIKE
5	1	S-LS00505	INTERIOR ROSE ASSEMBLY
5.9	1	S-LS00526	INTERIOR FIRE SHIELD
5.11	1	S-LS00494	ROSE
6	1	S-LS00617	6-PIN DRILLED CYLINDER
6.2	1	S-LS00220	TAILPIECE (2-639-7008)
7	2	Round Head Screw_AI	CUSTOM 8-32 X 1-1/8" RPHMS
8	2	S-LS00882	#12 X 3/4" FPH COMBO SCREW
9	2	S-LS00882	#8 X 3/4" FPH COMBO SCREW
10	1	S-LS00816	PLASTIC CYLINDER RETAINER



NOTE 1: (2) KEYS PROVIDED
NOTE 2: WITHNELL LEVER SHOWN, OTHERS OPTIONAL



PROPRIETARY & CONFIDENTIAL
THE INFORMATION CONTAINED
IN THIS DRAWING IS THE SOLE
PROPERTY OF HAGER
COMPANIES. ANY REPRODUCTION
IN PART OR AS A WHOLE WITHOUT
THE WRITTEN PERMISSION OF
HAGER COMPANIES IS PROHIBITED.

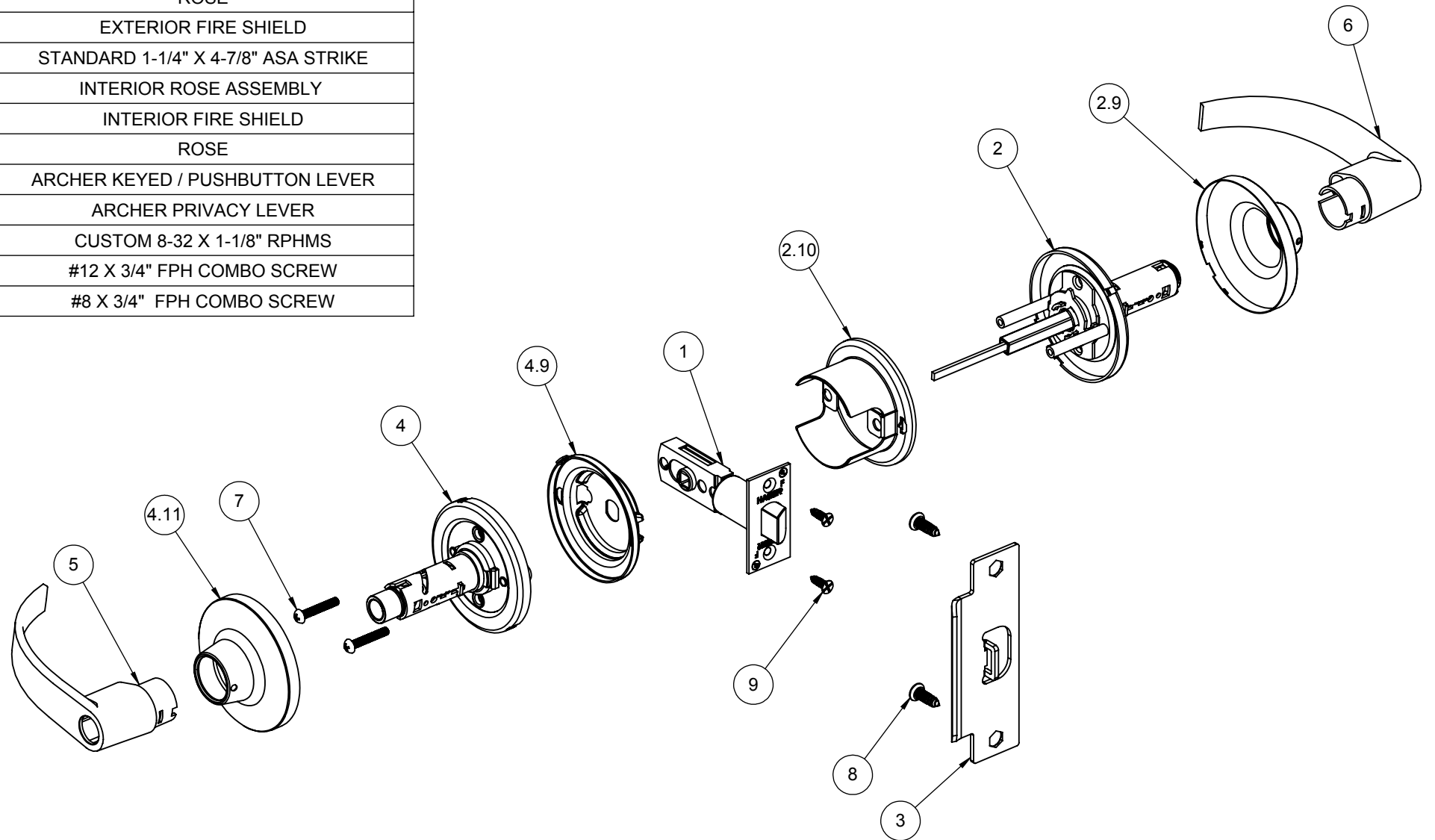
HAGER RESERVES
THE RIGHT TO
MAKE DESIGN
CHANGES
WITHOUT NOTICE.
CALL HAGER
ENGINEERING AT
1-800-325-9995
FOR THE LATEST
REVISION DATE
OF TEMPLATE.

MATERIAL	
FINISH	
DO NOT SCALE DRAWING	

DRAWN	MRJ	9/20/2009
ENG. APPR.	-	-
TOLERANCES:		
FRACTIONAL: ±0.015"		
ANGULAR: MACH: ±1° BEND: ±1°		
TWO PLACE DECIMAL: ±0.01"		
THREE PLACE DECIMAL: ±0.004"		

3653 GRADE 2 - ENTRY LEVERSET (TUBULAR)		REV.
SIZE	DWG. NO.	REV.
B	S-LS00870	02
SCALE: 1:12	WEIGHT:	SHEET 1 OF 1

ITEM NO.	QTY.	FILE NAME	DESCRIPTION
1	1	S-LS00519	3951 ADJ SPRING LATCH
2	1	S-LS00505	EXTERIOR ROSE ASSEMBLY
2.9	1	S-LS00494	ROSE
2.10	1	S-LS00493	EXTERIOR FIRE SHIELD
3	1	S-LS00236	STANDARD 1-1/4" X 4-7/8" ASA STRIKE
4	1	S-LS00505	INTERIOR ROSE ASSEMBLY
4.9	1	S-LS00526	INTERIOR FIRE SHIELD
4.11	1	S-LS00494	ROSE
5	1	S-LS00496	ARCHER KEYED / PUSHBUTTON LEVER
6	1	S-LS00496	ARCHER PRIVACY LEVER
7	2	Round Head Screw_AI	CUSTOM 8-32 X 1-1/8" RPHMS
8	2	S-LS00882	#12 X 3/4" FPH COMBO SCREW
9	2	S-LS00882	#8 X 3/4" FPH COMBO SCREW



NOTE: ARCHER LEVER SHOWN, OTHERS OPTIONAL



PROPRIETARY & CONFIDENTIAL
 THE INFORMATION CONTAINED
 IN THIS DRAWING IS THE SOLE
 PROPERTY OF HAGER
 COMPANIES. ANY REPRODUCTION
 IN PART OR AS A WHOLE WITHOUT
 THE WRITTEN PERMISSION OF
 HAGER COMPANIES IS PROHIBITED.

HAGER RESERVES
 THE RIGHT TO
 MAKE DESIGN
 CHANGES
 WITHOUT NOTICE.
 CALL HAGER
 ENGINEERING AT
 1-800-325-9995
 FOR THE LATEST
 REVISION DATE
 OF TEMPLATE.

DRAWN	MRJ	8/20/2009
ENG. APPR.	-	-
MATERIAL	Q.A.	
FINISH	TOLERANCES: FRACTIONAL: ±0.015" ANGULAR: MACH: ±1° BEND: ±1° TWO PLACE DECIMAL: ±0.01" THREE PLACE DECIMAL: ±0.004"	
DO NOT SCALE DRAWING		

3640
 GRADE 2 - PRIVACY LEVERSET
 (TUBULAR)

SIZE	DWG. NO.	REV.
B	S-LS00871	01
SCALE: 1:12	WEIGHT:	SHEET 1 OF 1