

INSTALLATION INSTRUCTIONS FOR HAGER 251 thru 254 FULL SURFACE REINFORCING PIVOT HINGE

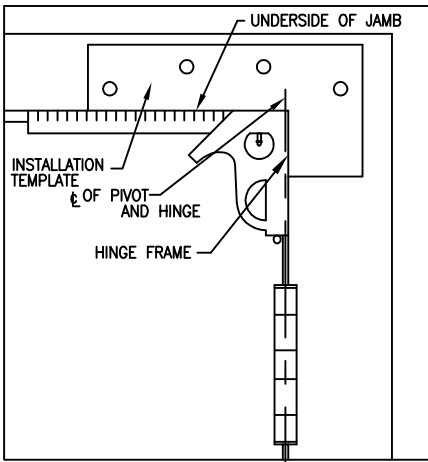


FIGURE 1
(LEFT HAND SHOWN)

STEP NO. 1

TO LOCATE PIVOT ON FRAME, HOLD COMBINATION SQUARE IN CORNER OF FRAME AND PLACE INSTALLATION TEMPLATE AGAINST SQUARE EXACTLY AS SHOWN. SPOT HOLE CENTERS WITH PRICK PUNCH.

STEP NO. 2

DRILL HOLES AS REQUIRED PER SCHEDULE

METAL FRAME - DRILL .201" (5.11 mm) DIAMETER HOLES (NO. 7 DRILL) FOR 1/4-20 MACHINE SCREW AND TAP HOLE.

NOTE: IF MATERIAL THICKNESS IS NOT SUFFICIENT OR WHEN HOLLOW METAL FRAMES ARE NOT REINFORCED, USE NO. 14 x 1 1/4" TYPE A SHEET METAL SCREW.

WOOD FRAME - DRILL PILOT HOLES AND INSTALL WOOD SCREWS.

STEP NO. 3

WITH DOOR IN PLACE, CHECK TO BE SURE THAT HINGES ARE FIRMLY ATTACHED AND THERE IS PROPER CLEARANCE BETWEEN DOOR AND FRAME AT ALL SIDES OF JAMB AND DOOR BOTTOM.

IF DOOR TENDS TO SAG AWAY FROM HINGE JAMB AT TOP, DRIVE WEDGES BETWEEN FRAME AND DOOR AT OPPOSITE STRIKE SIDE AND REALIGN HINGES UNTIL DOOR IS PROPERLY POSITIONED TO SWING FREE.

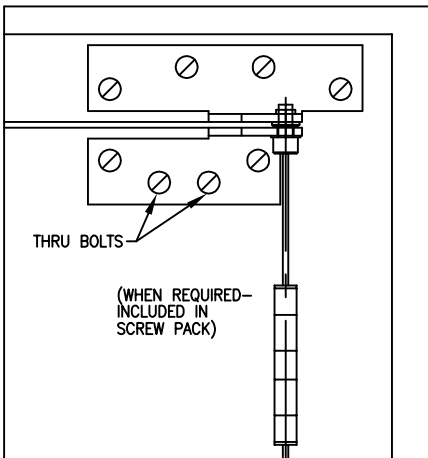


FIGURE 2
(LEFT HAND SHOWN)

STEP NO. 4

PLACE DOOR PORTION OF PIVOT (WITH PIN IN PLACE) ON DOOR AND MOVE INTO POSITION SO THAT PIN ENTERS BRONZE BUSHING. WHEN PROPERLY ALIGNED WITH LOWER PART MAKING LIGHT CONTACT WITH BEARING FLANGE, HOLD FIRMLY IN PLACE, PARALLEL WITH HEAD OF DOOR, AND MARK HOLE LOCATIONS.

STEP NO. 5

REPEAT DRILLING INSTRUCTIONS NOTED IN STEP NO. 2 FOR METAL DOORS, DRILL .201" (5.11 mm) DIAMETER HOLES (NO. 7 DRILL) FOR 1/4-20 MACHINE SCREW AND TAP HOLE.

NOTE: USE TWO (2) THRU BOLTS (SEX BOLTS) FURNISHED WITH EACH PIVOT. USE AS REQUIRED FOR HOLLOW METAL, OR MINERAL CORE DOORS (SEE FIG. 3). DRILL 1/4" (6.35 mm) HOLE THROUGH DOOR. ENLARGE HOLE ON SIDE OPPOSITE PIVOT ONLY TO 3/8" (9.53 mm) DIAMETER FOR SEX BOLT.

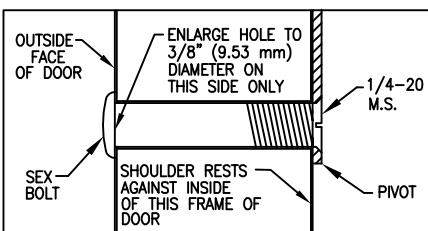


FIGURE 3

HAGER COMPANIES
139 VICTOR STREET
P.O. BOX 12300
ST. LOUIS, MISSOURI 63157-0300

Template No. T450B

No.	REVISION	BY	DATE
2	DRAWING CLEAN UP	DLW	8-18-06