

# Electromagnetic Holders



Hager Companies offers a line of electromagnetic door holders with built-in protection and low residual magnetism so they release easily even in applications meeting ADA requirements with minimal spring force door closers. These features make the electromagnetic holders a great solution for both safety and convenience and are ideal solutions for applications in hotels, hospitals and nursing homes.

Hager electromagnetic holders are designed for virtually any remote door release application and are ideal for holding doors open until released by a fire alarm or switching device. When deactivated the electromagnetic holders help to control the spread of fire and smoke by the simultaneous release of doors from an open to a closed position. The electromagnetic holders can be utilized independently or with the smoke detector systems.

The electromagnetic holders include a door mounted armature and a floor or wall mounted electromagnet. The features of this hardware include: dual voltage capability, very low current draw for energy efficiency, silent operation and an adjustable catch plate.



## ELECTROMAGNETIC DOOR HOLDERS - PERFORMANCE DATA

MODEL	VOLTAGE	DC/mA	AC/mA	TERMINALS	LB.	KG.
1224	12V	40	38	C&L	30	13.6
	24V	40	36	C&H	30	13.6
24120	24V	20	19	C&L	40	18.1
	120V		20	C&H	35	15.8
24220	24V	20	19	C&L	20	9.0
	220V		15	C&H	22	9.8

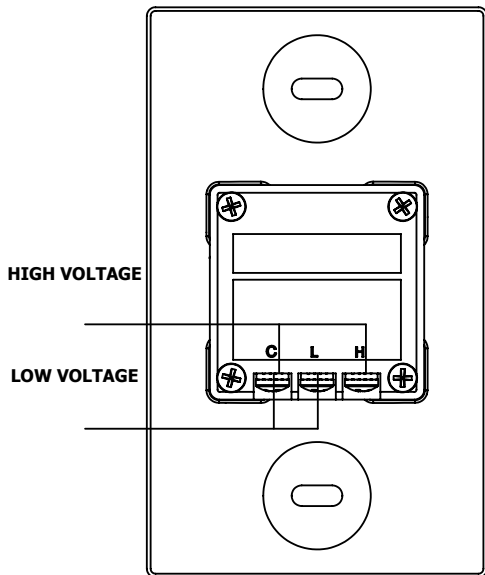
MODEL	VOLTAGE	DC/mA	AC/mA	TERMINALS	LB.	KG.
1224	24V	85	81	C&L	75	34.0
24120	120V		100	C&L	110	49.8

**\*High Holding Force/Special Applications:**

To obtain the performance values in the above table, apply high listed voltage to low voltage terminals (C&L).

NOTE: This configuration can only be applied to models 1224 and 24120.

### DUAL VOLTAGE (REAR VIEW SHOWN)



### EXTENSION ROD/ADJUSTABLE EXTENSION ROD

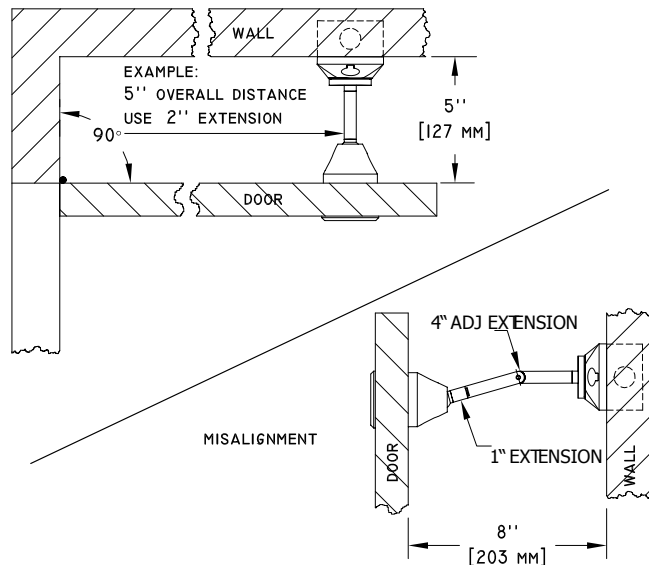
To calculate extension rod length needed, use the formula below based on style holder being used.

**Flush mount:** Measure distance from door to wall when held at desired opening. Subtract 3" (76 mm) to obtain extension rod length needed.

**Recessed mount:** Measure distance from door to wall when held at desired opening. Subtract 2-3/8" (60 mm) to obtain extension rod length needed.

**Surface mount:** Measure distance from door to wall when held at desired opening. Subtract 4-5/8" (117 mm) to obtain extension rod length needed.

See example below using flush mount.



## ELECTROMAGNETIC DOOR HOLDERS - GRADE 1 HEAVY DUTY COMMERCIAL

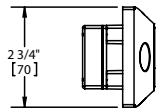
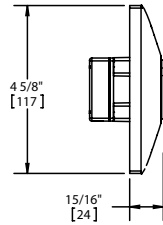
<b>WARRANTY</b>	One-year warranty
<b>FEATURES</b>	<ul style="list-style-type: none"> <li>• Ideal for hospitals, hotels, schools, and other commercial buildings</li> <li>• Designed for use with self-closing fire and smoke barrier doors</li> <li>• Low current draw</li> <li>• Fail safe: when electrical current is interrupted, doors release to close automatically</li> </ul>
Certification:	<ul style="list-style-type: none"> <li>• UL/ULC listed</li> <li>• Meets ANSI 156.15 for C00011</li> <li>• California State Fire Marshall listed (CSFM)</li> <li>• City of New York MEA approved</li> <li>• Factory Mutual</li> </ul>
Body:	Zinc alloy
Voltages:	Standard dual voltage AC or DC inputs of 12 & 24V, 24 & 120V, 24 & 220V models
Holding Force:	Typical holding force of 25-40 pounds; performance value can be increased to 110 pounds on special applications
Mount:	Single or double coil floor, surface, flush, and recessed mount
<b>SPECIFICATIONS</b>	
Total Projection:	<ul style="list-style-type: none"> <li>• Recessed mount: 2-11/32" (60 mm)</li> <li>• Flush mount: 3-1/16" (78 mm)</li> <li>• Surface mount: 4-5/8" (117 mm)</li> <li>• Floor mount (single door): 5" (127 mm)</li> <li>• Floor mount (double door): 9-5/8" (244 mm)</li> </ul>
Fasteners:	Hardware package, mounting bracket
Notes:	<ul style="list-style-type: none"> <li>• Optional aluminum extension and misalignment rods available</li> <li>• Drill fixture available</li> <li>• Replacement armature disc and armature plate assemblies available</li> <li>• Adhesive template included</li> </ul>
<b>FINISHES</b>	US3, LS, L2



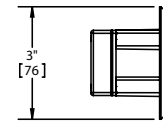
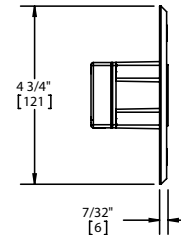
## ELECTROMAGNETIC DOOR HOLDERS - 380 SERIES HOLDERS



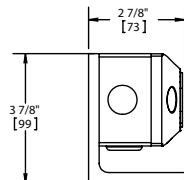
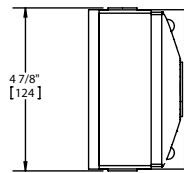
**380F**  
Flush Mount



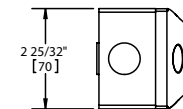
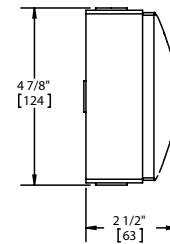
**380R**  
Recessed Mount



**380G**  
Floor Mount (Single Door)



**380S**  
Surface Mount



**380H**  
Floor Mount (Double Door)

