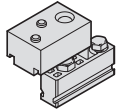
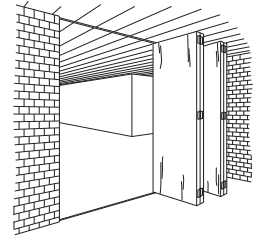
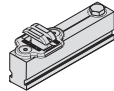


Sliding/Folding for Interior Partitions

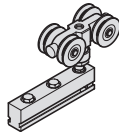
HAWA-Variofold 80/H



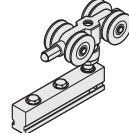
Upper pivot with suspension block



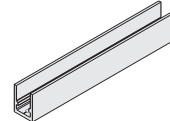
Door stopper with adjustable catch



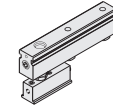
Running gear, M10 with ball-bearing wheels



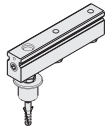
Running gear with distance spacers



Carrier profile



Thrust bearing with lower pivot



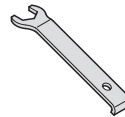
Thrust bearing with lower pivot



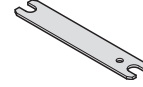
Lower guide with plastic slider



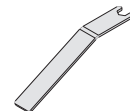
Cover caps to carrier profile, gray



Vertical adjustment wrench, 19 mm





Wrench, 10/11 mm for suspension assembly



Wrench, 13 mm

Fittings Sets for Folding Doors



Set does not include the upper tracks, lower guide channels, hinges or locks.

	 Basic set for lower pivot w/guide channel		 Additional set with guide channel		
	943.29.010	943.29.011	943.29.012	Item No.	
1 Fitting set includes:					
Upper pivot with suspension block	1 pc.	1 pc.	-	943.27.022	
Door stopper with adjustable catch	1 pc.	1 pc.	1 pc.	943.27.043	
Running gear, M10 with ball bearing wheels	1 pc.	1 pc.	-	943.27.012	
Running gear, M10 with distance spacer	-	-	1 pc.	943.27.021	
Carrier profile, 208 mm (8 3 1/16") aluminum anodized	5 pcs.	4 pcs.	3 pcs.	940.81.080	
Thrust bearing for lower guide channel, includes lower pivot	1 pc.	-	-	943.28.028	
Thrust bearing, used w/o lower guide channel, includes lower pivot	-	1 pc.	-	943.28.029	
Lower guide with plastic slider	1 pc.	-	1 pc.	943.28.027	
Cover cap to carrier profile, rubber gray	5 pcs.	4 pcs.	3 pcs.	942.56.029	
Vertical adjustment wrench, 19 mm	1 pc.	1 pc.	-	943.27.090	
Wrench, 10/11 mm for suspension assembly	1 pc.	1 pc.	-	941.20.091	
Wrench, 13 mm	1 pc.	1 pc.	-	943.30.095	

Note: Item numbers are valid for only 1 piece, when ordering individual components please state the desired amount.

Fittings Sets for Pivot Doors

Set does not include the upper tracks, lower guide channels, hinges or locks.

	 Pivot door set attached to folding doors		 Pivot door set w/guide channel		
	943.29.013	943.29.014	943.29.015	Item No.	
1 Fitting set includes:					
Upper pivot with suspension block	-	1 pc.	1 pc.	943.27.022	
Door stopper with suspension block	1 pc.	1 pc.	1 pc.	943.27.041	
Carrier profile, 208 mm (8 3 1/16") aluminum anodized	1 pc.	3 pcs.	3 pcs.	940.81.080	
Thrust bearing for lower guide channel, includes lower pivot	-	1 pc.	-	943.28.028	
Thrust bearing, used w/o lower guide channel, includes lower pivot	-	-	1 pc.	943.28.029	
Cover cap to carrier profile, rubber gray	1 pc.	3 pcs.	3 pcs.	940.80.029	

Note: Item numbers are valid for only 1 piece, when ordering individual components please state the desired amount.

Dimensional data not binding. We reserve the right to alter specifications without notice.

Dimensions in mm are exact
Inches are approximate