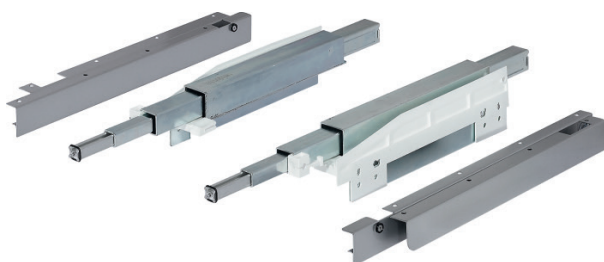


Pull-Out Table Systems



- > Extension fitting supports surface width: max. 900 mm (35 1/2")
- > As the table is extended, the front panel drops down automatically until the top is flush with the table
- > Recommended tabletop thickness: 16 mm (5/8")
- > Weight capacity: 30 kg (66 lbs.)
- > Extended length: 810 mm (32")
- > Cabinet width: 450–900 mm (17 3/4"–35 1/2")
- > Interior cabinet opening height: 120 mm (4 3/4")
- > Cabinet depth: min. 510 mm (20")
- > Material: Steel, plated

→ Top Flex Pull-Out Table

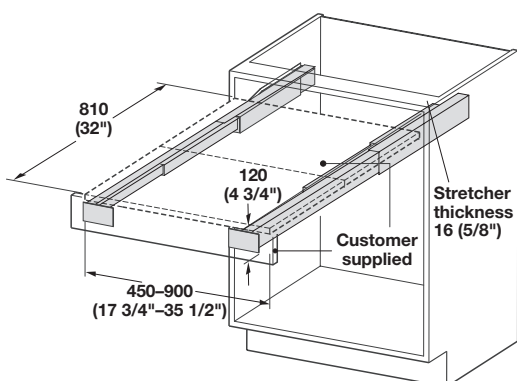


Item No.

505.70.200

Note

Tabletop and front panel are customer supplied.



Dimensional data not binding. Dimensions in mm, inches are approximate. We reserve the right to alter specifications without notice.