

Sliding/Stacking for Cabinet Applications

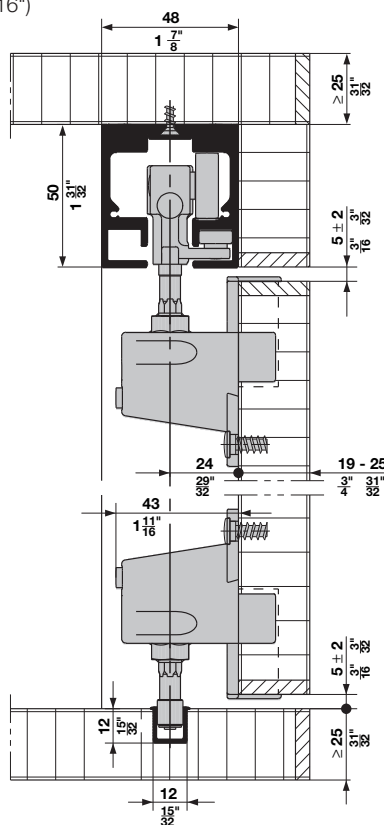
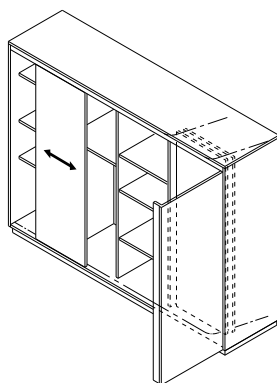
HAWA-Aperto 40/F

- Up to 7 panels can be stored in a parking area on one side of the cabinet
- Cabinet front is flush when closed
- Smooth and quiet operation
- Use for left or right handed application
- Maximum door weight: **40 kg** (88 lbs.)
- For door thickness: **19 – 25 mm** (3/4" – 1")
- Height adjustable: **+/- 2 mm** (5/64")
- Depth adjustment up to **25 mm** (1")
- Door width: **400 mm – 900 mm** (15 3/4" – 35 7/16")
- Maximum door height: **2600 mm** (102 3/8")

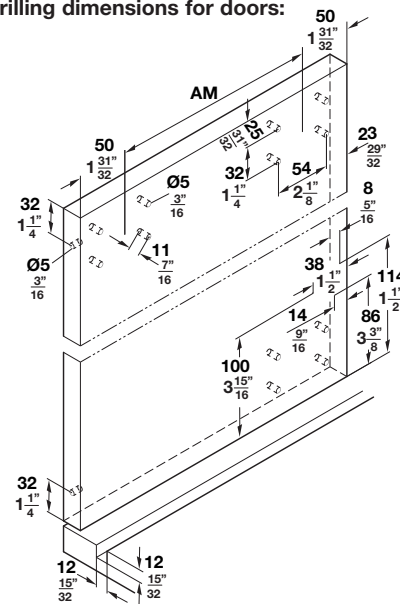
Custom and curved applications available. Contact our product specialist at **1-888-437-7477**.



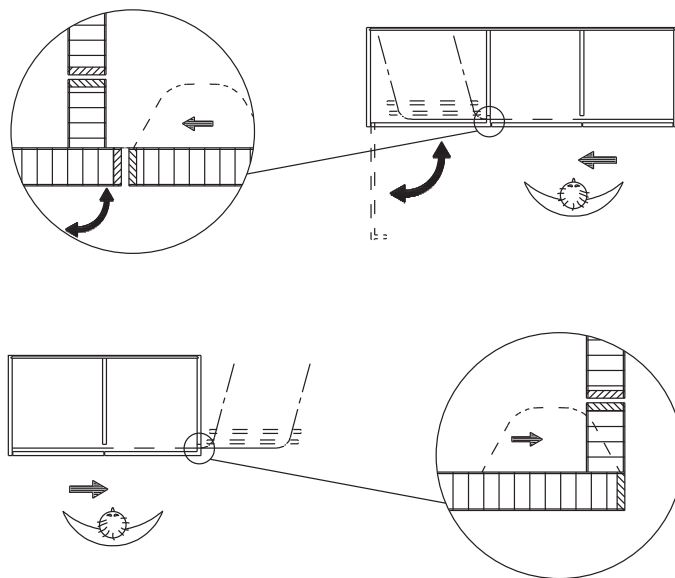
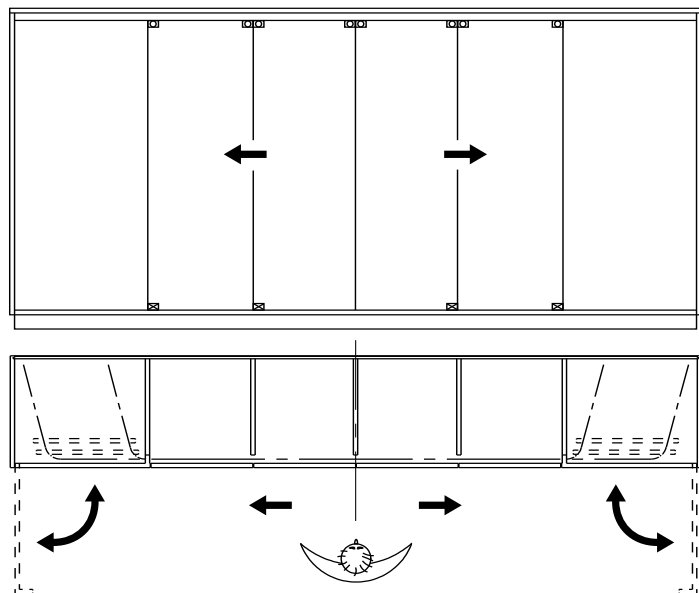
For stackable cabinet fronts



Drilling dimensions for doors:



Layout example:



Dimensions in mm are exact
Inches are approximate