

## Elite wardrobe tube profiles

Aluminum



EXTENDING



SWITCHING



NETWORKING



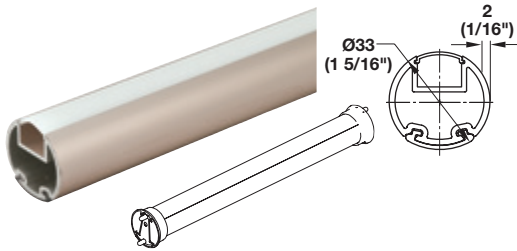
DISTRIBUTING



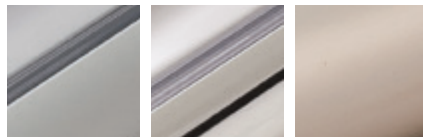
SUPPLYING



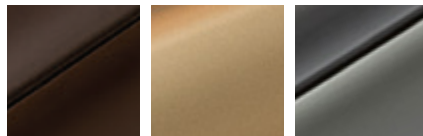
### Wardrobe tube 5111



- > Material/Finish: Aluminum, anodized
- > Insert: Plastic
- > Supplied with: 1 pc. with milk lens



matt aluminum    polished chrome    matt nickel



oil-rubbed bronze    matt gold    slate

Length	Finish/insert	Item No.
2438 mm (8')	Matt aluminum/clear	<b>830.28.700</b>
2438 mm (8')	Matt nickel/clear	<b>830.28.710</b>
2438 mm (8')	Polished chrome/clear	<b>830.28.720</b>
2438 mm (8')	Oil-rubbed bronze/black	<b>830.28.730</b>
2438 mm (8')	Matt gold/clear	<b>830.28.790</b>
2438 mm (8')	Slate/black	<b>830.28.800</b>
1219 mm (4')	Matt aluminum/clear	<b>830.28.701</b>
1219 mm (4')	Matt nickel/clear	<b>830.28.711</b>
1219 mm (4')	Polished chrome/clear	<b>830.28.721</b>
1219 mm (4')	Oil-rubbed bronze/black	<b>830.28.731</b>
1219 mm (4')	Matt gold/clear	<b>830.28.705</b>
1219 mm (4')	Slate/black	<b>830.28.706</b>

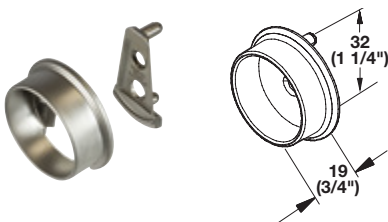


#### Lens

- > Material: Plastic
- > Cover: Milk
- > Height: 13 mm (1/2")

Item No.
<b>833.74.781</b>

### Wardrobe tube support



- > Unique two-part design allows the support to fully surround the tube ends
- > Connect the wedge shaped brackets into line bore holes and side supports onto the end of the tube
- > Side supports connect to the wedge shaped brackets
- > With two pins for 5 mm (3/16") holes
- > 32 mm (1 1/4") spacing with an additional screw hole for side panel mounting

- > Material: Zinc-plated
- > Diameter: 32 mm (1 1/4")

Finish	Item No.
Matt aluminum	<b>803.39.410</b>
Matt nickel	<b>803.39.610</b>
Polished chrome	<b>803.39.210</b>
Oil-rubbed bronze	<b>803.39.110</b>
Matt gold	<b>803.39.910</b>
Slate	<b>803.39.710</b>

Dimensional data not binding. Dimensions in mm, inches are approximate. We reserve the right to alter specifications without notice.