

### HAWA Concepta 25/30/40/50

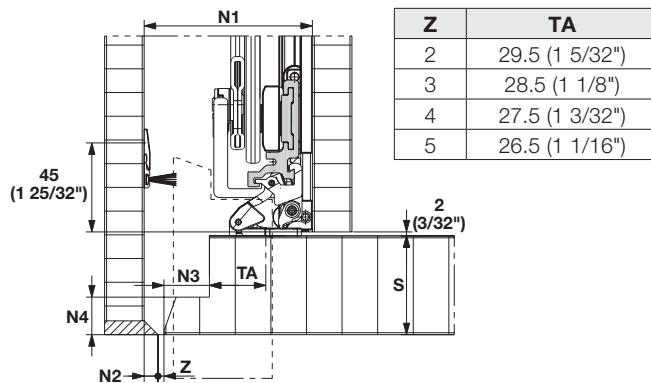
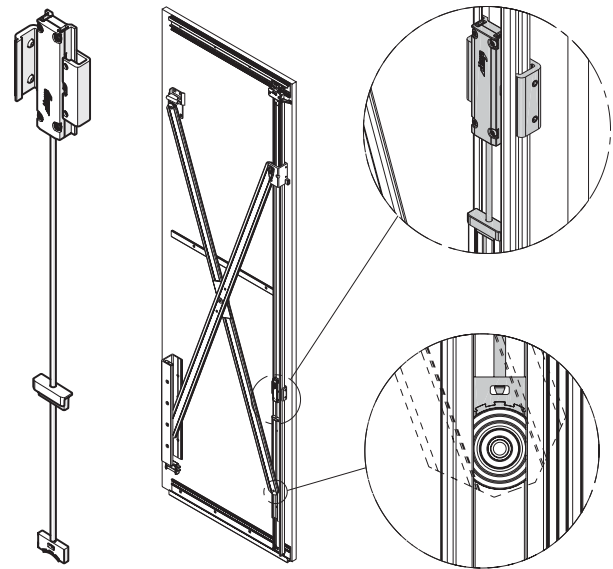
#### Shock Absorber

- The shock absorber stops the door gently and quietly when it is pulled out

#### Stop Cover Caps and Depth Adjustment

The stop cover caps are screwed onto the face side of the top tracks and floor guides, allowing for the following:

- The integrated guide roller makes it easy to pivot the door and slide it in, positioning it in the closed position
- The closed front can be aligned by 0 – 2 mm (0" – 3/32") in the depth of the cabinet
- The hardware set includes a pair of stainless steel cover caps for extra visual appeal, that simply clip on to the stop cover caps

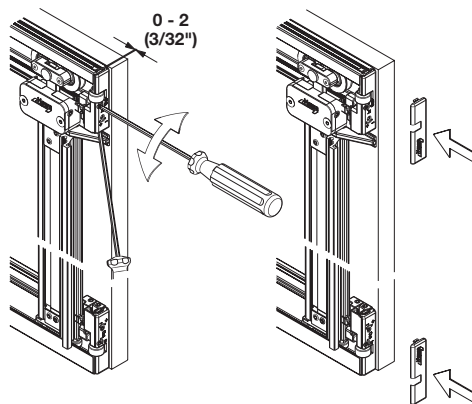


#### Wood Doors from 30 mm (1 3/16")

- Rabbets enable the installation of wood doors with thicknesses from >30–50 mm (1 3/16"–1 31/32").

#### Rabbet Dimensions

S	N1	N2	N3	N4
19 – 30 (3/4" – 1 3/16")	55 (2 3/16")	0	0	0
33 (1 5/16")	58 (2 9/32")	0	3 (1/8")	3 (1/8")
36 (1 7/16")	63 (2 1/2")	2 (3/32")	6 (1/4")	5 (7/32")
39 (1 17/32")	67 (2 21/32")	3 (1/8")	9 (3/8")	8 (5/16")
42 (1 21/32")	70 (2 3/4")	3 (1/8")	12 (15/32")	11 (7/16")
45 (1 25/32")	75 (2 21/32")	5 (7/32")	15 (19/32")	14 (9/16")
48 (1 29/32")	79 (3 1/8")	6 (1/4")	18 (23/32")	17 (11/16")
50 (1 31/32")	83 (3 9/32")	7 (9/32")	21 (27/32")	19 (3/4")



Front Depth Adjustment

Adjustment Screw Cover

Dimensional data not binding. We reserve the right to alter specifications without notice.