

27 595

TEMPESTA®

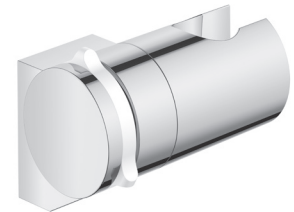
ADJUSTABLE HAND SHOWER HOLDER

*Pure Freude
an Wasser*



STANDARD SPECIFICATION:

- Wall mounted hand shower holder
- Adjustable



PRODUCT FEATURES:



CERTIFICATIONS:

AVAILABLE FINISHES:

27595001



GROHE StarLight® Chrome

NOTE: Install this product according to the installation guide. ADA, CSA compliant when installed to the specific requirements of these regulations.

We reserve the right to make revisions without notice to product specifications. 12-08-2023

US
Tel: 1.630.582.7711 Fax: 1.630.582.7722
For the most current Specification Sheet,
go to www.grohe.us.

Canada
Tel: 1.888.644.7643 Fax: 1.905.366.2071
For the most current Specification Sheet,
go to www.grohe.ca.

PART OF LIXIL

27 595

TEMPESTA®

ADJUSTABLE HAND SHOWER HOLDER

*Pure Freude
an Wasser*



TECHNICAL DATA:

