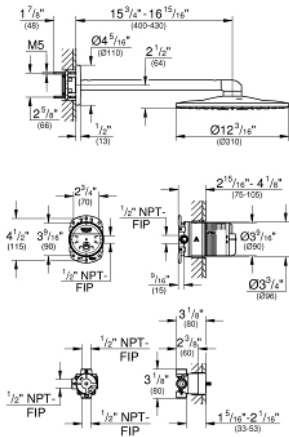


RAINSHOWER 310
SMARTACTIVE
Shower Head Set 2 Sprays
MODEL # 26502EN0

Pure Freude
an Wasser



Product Description:
RAINSHOWER 310 SMARTACTIVE
Shower Head Set 2 Sprays

Standard Specification:

- Consisting of:
- Rainshower 310 SmartActive shower head Brushed Nickel
- 2 Spray patterns:
- GROHE PureRain, ActiveRain
- Includes 16" shower arm

GROHE EcoJoy 1.75 gpm flow limiter per each water way

- **GROHE DreamSpray** perfect spray pattern
- **GROHE StarLight** finish
- **SpeedClean**® anti-lime system
- Inner WaterGuide for a longer life
- Rough-in set for shower head
- 2-Way diverter rough-in set 29 900 000 (Trim set to be ordered separately)

Applicable Codes & Standards:

- Energy Policy Act of 1992
- ASME A112.18.1/CSA B125.1
- US Federal and State material regulations

Color:

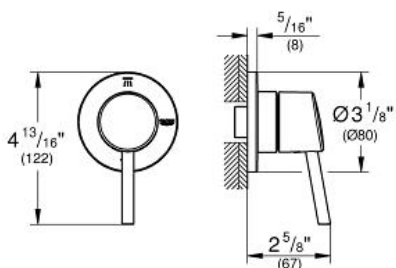
- 26502EN0 Brushed Nickel

CONCETTO
2-Way Diverter Trim (Shower
head/Hand Shower)

MODEL # 29108001

Pure Freude
an Wasser

GROHE



ADA

Product Description:

CONCETTO

2-Way Diverter Trim (Shower head/Hand Shower)

Standard Specification:

- GROHE StarLight chrome finish
- Metal lever handle for 2 outlets: shower head/hand shower
- For use with 2-way diverter rough-in valves (29 900) or (29 901)
- ADA Compliant

Applicable Codes & Standards:

- ICC/ANSI A117.1

Color:

- 29108001 StarLight Chrome

CONCETTO
Pressure Balance Valve Trim
MODEL # 29100001

Pure Freude
an Wasser

GROHE



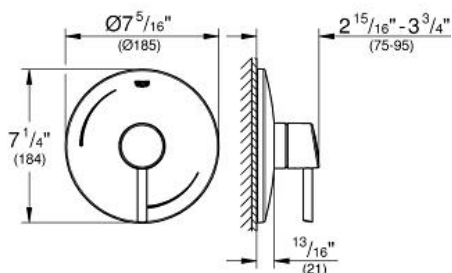
Product Description:
CONCETTO
Pressure Balance Valve Trim

Standard Specification:

- GROHE StarLight chrome finish
- Metal lever handle
- Metal wall escutcheon
- For use with GrohSafe rough-in valves (35 015), (35 064), (35 065), (35 066)
- ADA Compliant

Color:

- 29100001 StarLight Chrome

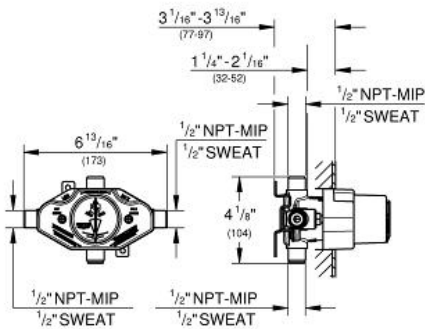


GROHSAFE
Universal Pressure Balance Rough-
In valve

MODEL # 35015001

Pure Freude
an Wasser

GROHE



Product Description:
GROHSAFE
Universal Pressure Balance Rough-In valve

Standard Specification:

- $\frac{1}{2}''$ universal inlets
- $\frac{1}{2}''$ Universal outlets
- Includes Blue Core cartridge
- 265° comfort range
- Handle limit stop
- Check valves
- Includes plug for 3-port installation
- Includes metal support bracket
- Universal connection is $\frac{1}{2}''$ male threads by copper sweat
- Service stops
- Optional extension kit (47 996 000) available
- Max flow rate (top port) 3.7 gpm at 45 psi (14 l/min), (bottom port) 4.0 gpm at 45 psi (15 l/min)

Applicable Codes & Standards:

- ASME A112.18.1/CSA B125.1

Color:

- 35015001 StarLight Chrome