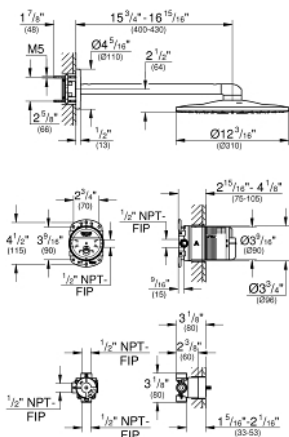


RAINSHOWER 310 SMARTACTIVE Shower Head Set 2 Sprays

MODEL # 26502EN0

Pure Freude
an Wasser



Product Description: RAINSHOWER 310 SMARTACTIVE Shower Head Set 2 Sprays

Standard Specification:

- Consisting of:
- Rainshower 310 SmartActive shower head Brushed Nickel
- 2 Spray patterns:
- GROHE PureRain, ActiveRain
- Includes 16" shower arm

GROHE EcoJoy 1.75 gpm flow limiter per each water way

- **GROHE DreamSpray** perfect spray pattern
- **GROHE StarLight** finish
- **SpeedClean®** anti-lime system
- Inner WaterGuide for a longer life
- Rough-in set for shower head
- 2-Way diverter rough-in set 29 900 000 (Trim set to be ordered separately)

Applicable Codes & Standards:

- Energy Policy Act of 1992
- ASME A112.18.1/CSA B125.1
- US Federal and State material regulations

Color:

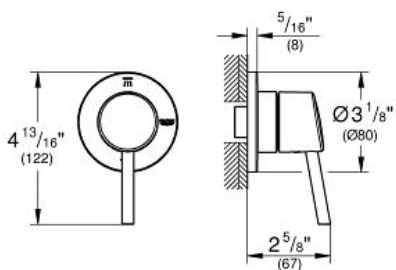
- 26502EN0 Brushed Nickel

CONCETTO
2-Way Diverter Trim (Shower
head/Hand Shower)

MODEL # 29108001

Pure Freude
an Wasser

GROHE



ADA

Product Description:

CONCETTO

2-Way Diverter Trim (Shower head/Hand Shower)

Standard Specification:

- GROHE StarLight chrome finish
- Metal lever handle for 2 outlets: shower head/hand shower
- For use with 2-way diverter rough-in valves (29 900) or (29 901)
- ADA Compliant

Applicable Codes & Standards:

- ICC/ANSI A117.1

Color:

□ 29108001 StarLight Chrome

EUROCUBE

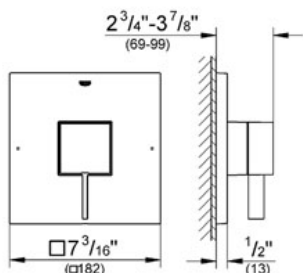
Single function pressure balance trim with control module

MODEL # 19924

Pure Freude an Wasser



GROHE America, Inc | 200 North Gary Avenue, Suite G, Roselle, IL 60172
Phone: +1 (800) 444-7643 | Fax: +1 (800) 225-2778 | us-customerservice@grohe.com



ADA

Product Description:

Single function pressure balance trim with control module

Standard Specification:

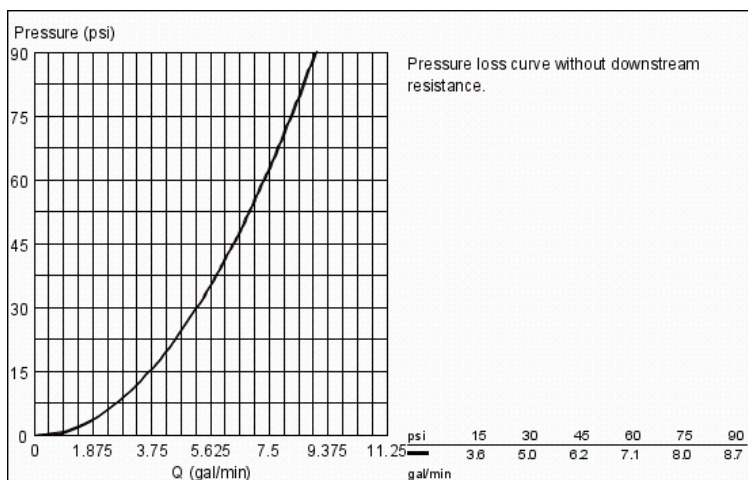
- GROHE SilkMove®
- GROHE StarLight® finish
- For shower only or shower\tub with diverter applications
- Integrated bypass option when used with diverter tub spout
- For use with GrohFlex™ universal rough-in box 35 026 000 sold separately
- 6.1 gpm at 45 psi

Applicable Codes & Standards:

- Energy Policy Act of 1992
- ASME A112.18.1/CSA B125.1
- ICC/ANSI A117.1

Color:

□ 19924 000 chrome

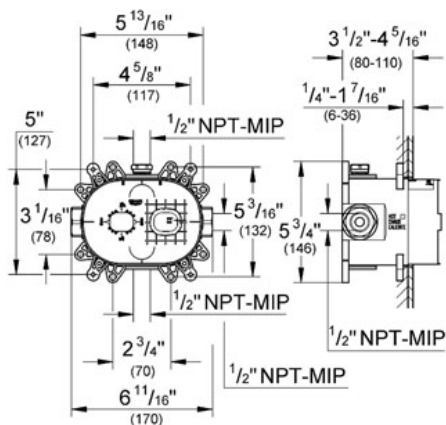
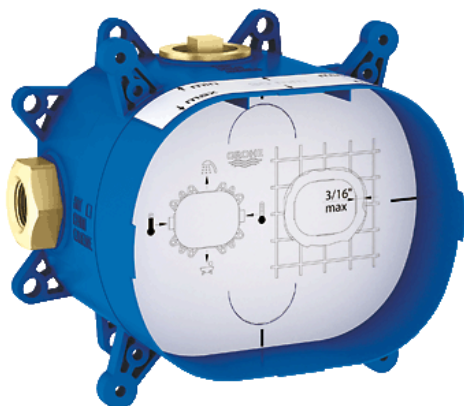


GROHFLEX™
Universal Rough-In Box
MODEL # 35026

Pure Freude an Wasser



GROHE America, Inc | 200 North Gary Avenue, Suite G, Roselle, IL 60172
Phone: +1 (800) 444-7643 | Fax: +1 (800) 225-2778 | us-customerservice@grohe.com



Product Description:
Universal Rough-In Box

Standard Specification:

- Inlets and outlets 1/2"
- Fixing points for front and back wall
- Leakproof housing
- Integrated service stops
- Flushing plug
- Removable protection cover with installation information
- For use with the GrohFlex Bathroom Solution Kits (sold separately):
 - Pressure Balance Valves and Thermostats
 - Single Function, Dual Function or Custom Shower

Applicable Codes & Standards:

- Energy Policy Act of 1992
- ASME A112.18.1/CSA B125.1

Color:

□ 35026 000