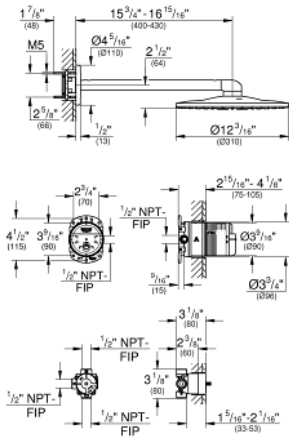


RAINSHOWER 310
SMARTACTIVE
Shower Head Set 2 Sprays
MODEL # 26502EN0

Pure Freude
an Wasser



Product Description:
RAINSHOWER 310 SMARTACTIVE
Shower Head Set 2 Sprays

Standard Specification:

- Consisting of:
- Rainshower 310 SmartActive shower head Brushed Nickel
- 2 Spray patterns:
- GROHE PureRain, ActiveRain
- Includes 16" shower arm

GROHE EcoJoy 1.75 gpm flow limiter per each water way

- **GROHE DreamSpray** perfect spray pattern
- **GROHE StarLight** finish
- **SpeedClean**® anti-lime system
- Inner WaterGuide for a longer life
- Rough-in set for shower head
- 2-Way diverter rough-in set 29 900 000 (Trim set to be ordered separately)

Applicable Codes & Standards:

- Energy Policy Act of 1992
- ASME A112.18.1/CSA B125.1
- US Federal and State material regulations

Color:

- 26502EN0 Brushed Nickel

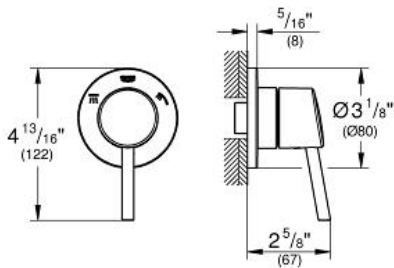
CONCETTO
3-Way Diverter Trim (Shower
head/Hand Shower/Tub Spout)

MODEL # 29106001

Pure Freude an Wasser

GROHE

GROHE America, Inc | 200 North Gary Avenue, Suite G, Roselle, IL 60172
Phone: +1 (800) 444-7643 | Fax: +1 (800) 225-2778 | us-customerservice@grohe.com



ADA

Product Description:

3-Way Diverter Trim (Shower head/Hand Shower/Tub Spout)

Standard Specification:

- GROHE StarLight® finish
- Metal lever handle for 3 outlets: shower head/hand shower/tub spout
- For use with 3-way diverter rough-in valves (29 902) or (29 903)
- ADA Compliant

Color:

- 29106001 001 chrome

2-Way Diverter Rough-In Valve (Discrete Functions)

MODEL # 29900000

Pure Freude an Wasser



GROHE America, Inc | 200 North Gary Avenue, Suite G, Roselle, IL 60172
Phone: +1 (800) 444-7643 | Fax: +1 (800) 225-2778 | us-customerservice@grohe.com



Product Description:

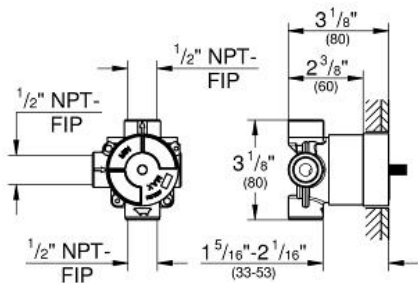
2-Way Diverter Rough-In Valve (Discrete Functions)

Standard Specification:

- ADA compliant: requires less than 5 lbs/22.2 N force to operate handle
- 1 inlet/2 outlets
- 2 discrete functions
- plasterguard included 1/2" NPT
- non shared (discrete) functions
- CALGreen compliant

Color:

- 29900000 000 chrome



CONCETTO
Pressure Balance Valve Trim
MODEL # 29100001

Pure Freude
an Wasser

GROHE



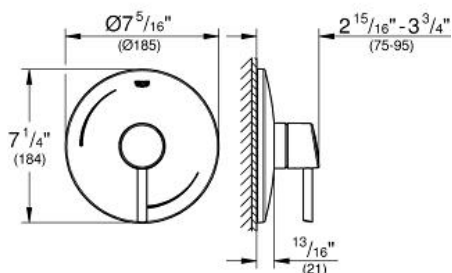
Product Description:
CONCETTO
Pressure Balance Valve Trim

Standard Specification:

- GROHE StarLight chrome finish
- Metal lever handle
- Metal wall escutcheon
- For use with GrohSafe rough-in valves (35 015), (35 064), (35 065), (35 066)
- ADA Compliant

Color:

- 29100001 StarLight Chrome

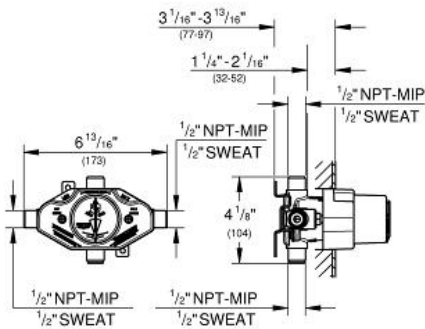


GROHSAFE
Universal Pressure Balance Rough-
In valve

MODEL # 35015001

Pure Freude
an Wasser

GROHE



Product Description:
GROHSAFE
Universal Pressure Balance Rough-In valve

Standard Specification:

- 1/2" universal inlets
- 1/2" Universal outlets
- Includes Blue Core cartridge
- 265° comfort range
- Handle limit stop
- Check valves
- Includes plug for 3-port installation
- Includes metal support bracket
- Universal connection is 1/2" male threads by copper sweat
- Service stops
- Optional extension kit (47 996 000) available
- Max flow rate (top port) 3.7 gpm at 45 psi (14 l/min), (bottom port) 4.0 gpm at 45 psi (15 l/min)

Applicable Codes & Standards:

- ASME A112.18.1/CSA B125.1

Color:

- 35015001 StarLight Chrome

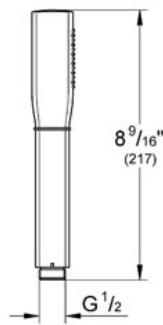
GRANDERA™ STICK Hand Shower

MODEL # 26037

Pure Freude an Wasser



GROHE America, Inc | 200 North Gary Avenue, Suite G, Roselle, IL 60172
Phone: +1 (800) 444-7643 | Fax: +1 (800) 225-2778 | us-customerservice@grohe.com



Product Description: Hand Shower

Standard Specification:

- GROHE StarLight® finish
- GROHE EcoJoy® 2.0g flow limiter
- GROHE CoolTouch No risk of scalding
- GROHE DreamSpray® perfect spray pattern
- SpeedClean anti-lime system
- Inner WaterGuide for a longer life
- Spray pattern: Rain
- Metal
- Suitable for instantaneous heater
- Universal mounting system (fits all standard shower hoses)
- Min. recommended pressure 15 psi
- Max Flow Rate 2.0 gpm (7.6 L/min)

Applicable Codes & Standards:

- Energy Policy Act of 1992
- ASME A112.18.1/CSA B125.1
- EPA WaterSense®

Color:

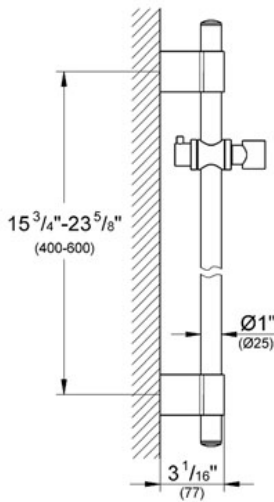
- 26037 000 chrome
- 26037 EN0 Brushed Nickel

RAINSHOWER®
24" Shower Bar
MODEL # 28797

Pure Freude an Wasser



GROHE America, Inc | 200 North Gary Avenue, Suite G, Roselle, IL 60172
Phone: +1 (800) 444-7643 | Fax: +1 (800) 225-2778 | us-customerservice@grohe.com



Product Description:
24" Shower Bar

Standard Specification:

- GROHE StarLight® finish
- With wall holders
- Glide element and swivel holder
- Adjustable distance between wall mount shower holders (for adapting to existing piping)
- Suitable for the Relaxa handshowers
 - Trio (28 793)
 - Champagne spray (28 794)
 - Massage (28 795)
 - Five (28 796)
- Suitable for the Rainshower handshowers
 - 5 1/8" Classic (28 764)
 - 6 1/4" Classic (28 765)
 - 5 1/8" Cosmopolitan (28 755)
 - 6 1/4" Cosmopolitan (28 756)

Applicable Codes & Standards:

- Energy Policy Act of 1992
- ASME A112.18.1/CSA B125.1

Color:

- 28797 001 chrome
- 28797 BE0 Sterling inf
- 28797 EN1 Brushed Nickel inf

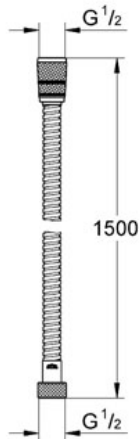
ROTAFLEX Shower Hose

MODEL # 28417

Pure Freude an Wasser



GROHE America, Inc | 200 North Gary Avenue, Suite G, Roselle, IL 60172
Phone: +1 (800) 444-7643 | Fax: +1 (800) 225-2778 | us-customerservice@grohe.com



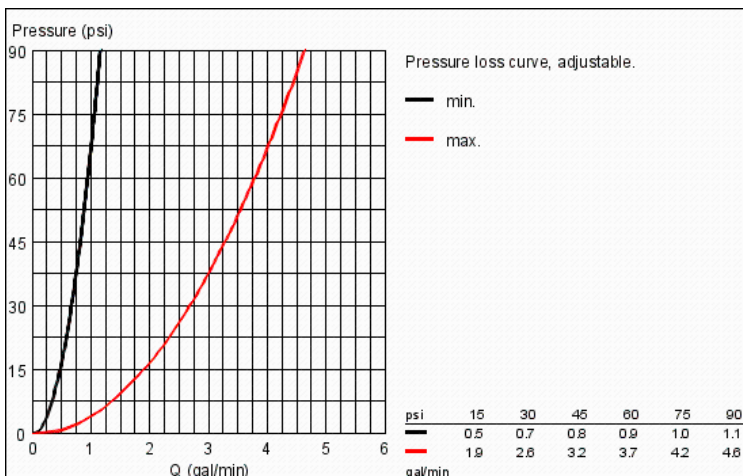
Product Description: Shower Hose

Standard Specification:

- GROHE StarLight® finish
- Rotation cone for Twistfree-function
- Silicone strip prevents hand shower from turning while in body pray position
- Metal
- 59"

Color:

- 28417 000 chrome
- 28417 ZB0 Oil Rubbed Bronze
- 28417 BE0 Sterling inf
- 28417 EN0 Brushed Nickel



RELEXA
Shower outlet elbow
MODEL # 28627

Pure Freude an Wasser



GROHE America, Inc | 200 North Gary Avenue, Suite G, Roselle, IL 60172
Phone: +1 (800) 444-7643 | Fax: +1 (800) 225-2778 | us-customerservice@grohe.com



Product Description:
Shower outlet elbow

Standard Specification:

- GROHE StarLight® finish
- 1/2" NPT Female Threads

Applicable Codes & Standards:

- Energy Policy Act of 1992
- ASME A112.18.1/CSA B125.1

Color:

- 28627 000 chrome
- 28627 EN0 Brushed Nickel

