

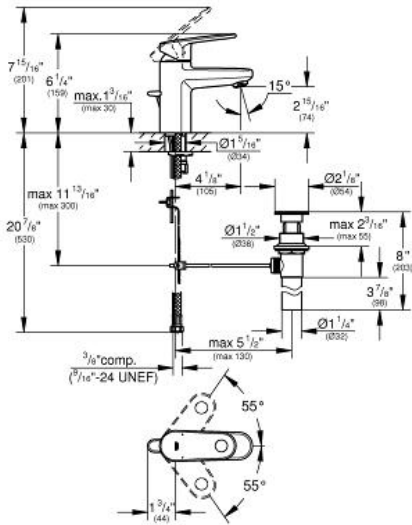
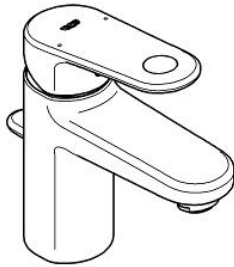
EUROPLUS
Lavatory Centerset
S-Size

MODEL # 33170

Pure Freude an Wasser



GROHE America, Inc | 200 North Gary Avenue, Suite G, Roselle, IL 60172
Phone: +1 (800) 444-7643 | Fax: +1 (800) 225-2778 | us-customerservice@grohe.com



Product Description:
Lavatory Centerset
S-Size

Standard Specification:

- Single hole installation
- **GROHE SilkMove** 35 mm ceramic cartridge
- Adjustable flow rate limiter
- Adjustable minimum flow rate approx. 1.0 gpm
- Temperature limiter
- **GROHE StarLight**® finish
- **SpeedClean** flow control
- Pop-up waste set
- Stainless steel flex lines
- Max flow rate: 1.2 gpm (4.56 L/min)

Color:

- 33170 002 chrome
- 33170 00A chrome
- 33170 EN2 brushed nickel
- 33170 ENA brushed nickel