

Note: Handlesets fit doors 1-3/4" to 2" thick.

A

USE INCLUDED DOOR PREPARATION TEMPLATE FOR NON-PREPED DOORS.

Depth of edge bore holes
2.318"
3.728"
1"
1" Diameter
Cross Bore Holes
Edge Bore Holes
Mortise for Faceplate
Edge bore holes
(Backset size See Step (C))
1/4" bore through door
Cross Bore Holes
Edge Bore Holes
Center Line

USE INCLUDED PLASTIC TEMPLATE TO LOCATE AND DRILL THE 1/4" BOTTOM GRIP MOUNTING HOLE. (See note on reverse side.)

B

Install deadbolt and handleset latches.

Door-Inside

Deadbolt Tongue (Part #1A) (See D Below Before Deadbolt Latch Installation.)
Deadbolt Latch (Part #1)
Deadbolt Faceplate (Part #14)
3/4" Latch & Strike Wood Screws (Part #2)
Post Holes
Edge Bore Holes
Handleset Latch (Part #13)
Latch Tongue (Part #13A)
3/4" Latch & Strike Wood Screws (Part #2)
Latch Faceplate (Part #14)
(See Latch Tongue Note in Panel C)

C

Latch tongue note

Bevel side of latch tongue should contact curved end of face plate, and curved end of strike plate.

Bevel Side
Face Plate Curve
Strike Plate Curve

D

Deadbolt latch tongue note

Door-Inside

Deadbolt Tongue must be EXTENDED during installation.

E

Install cylinder into plate

Door-Outside

Cylinder Assembly (part #3)
Tailpiece must be VERTICAL during installation.
Spin Ring (part #3C)
Plate (part #4)

F

Place cylinder assembly with plate, on door exterior. Attach deadbolt adaptor plate with provided screws.

Door Inside

Deadbolt Adaptor Plate (part #5)
Machine Screws (part #6)
Cylinder Assembly (part #3)

G

Attach thumbturn assembly with provided screws.

Door-Inside

Thumbturn Assembly (part #7)
5/8" machine screws (part #8)

H

Install exterior handleset on door exterior. (part #16)

Door-Outside

Cylinder and Plate (part #s 3 & 4)

I

Install rosette/short plate on door inside.

Insert bottom grip mounting screw.

Door-Inside

Machine Mounting Screws (part #18)
Knob (Part #19)
Rosette/Short Plate (part #17)
Bottom Grip Mounting Screw (part #21)
Mounting Screw Cover (part #22)
Screw Cover Adapter (part #20)

J

Install jamb strike plate.

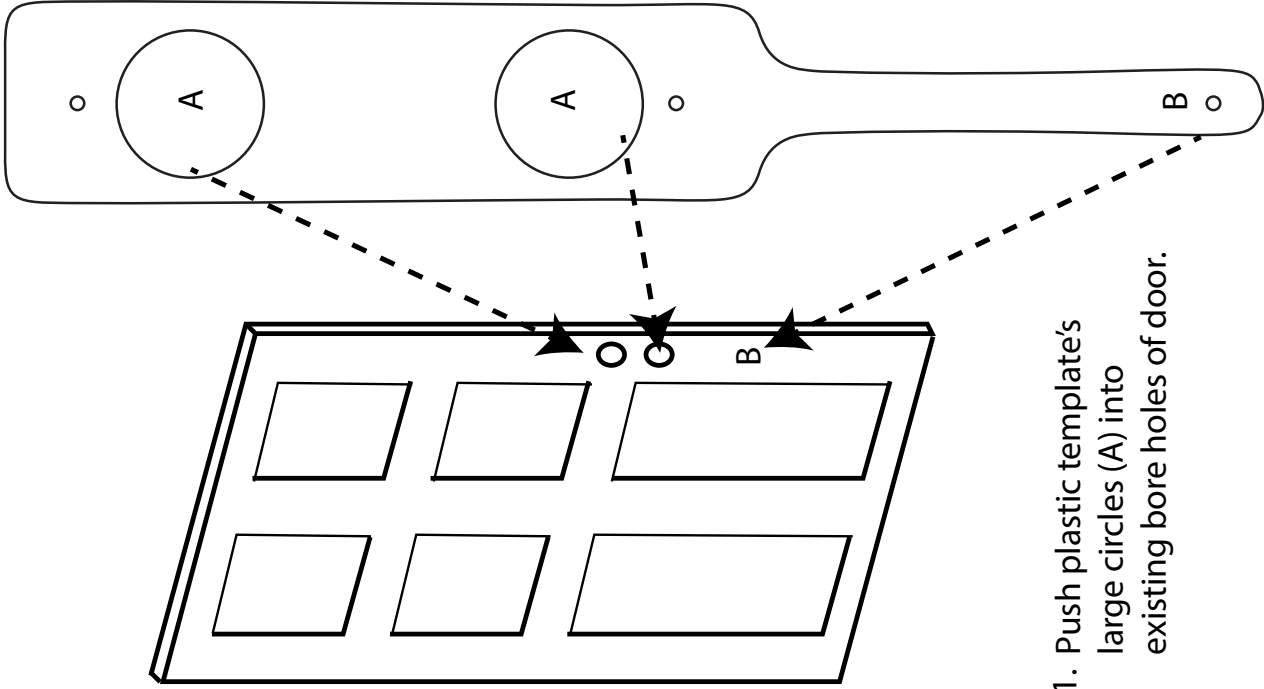
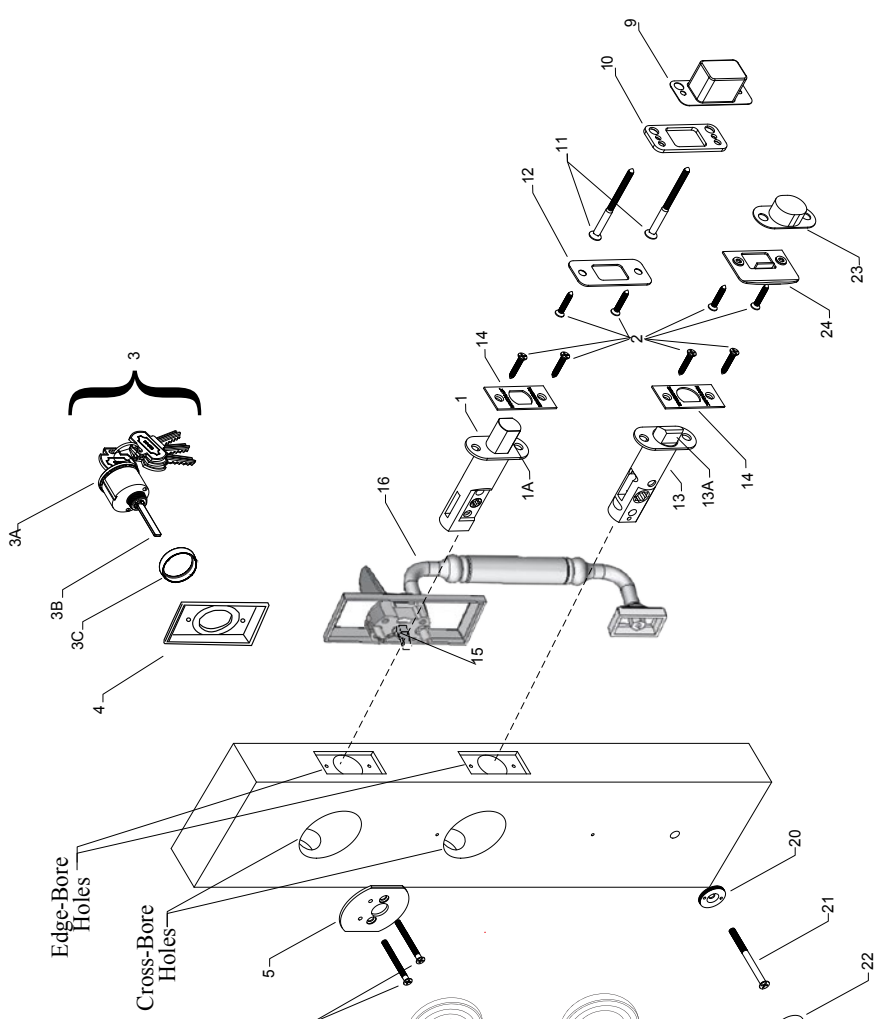
Door-Outside

Dust Box (Part #9)
Door Frame Reinforcer (Part #10)
Strike Plate (Part #12)
3" Wood Screws (Part #11)
3/4" Latch & Strike Wood Screw (Part #2)

Exploded Drawing Single Cylinder Handleset— Rosette/Short Plate with Sectional Handleset

**Part
Number Description**

1. Deadbolt Latch
- 1A. Latch Tongue
2. 3/4" Faceplate & Strike Wood Screws (8)
3. Cylinder Assembly (W/Keys)
 - 3A. Cylinder Body
 - 3B. Tailpiece
 - 3C. Spin Ring (Georgetown & Newport do not require spin ring)
4. Deadbolt Plate
5. Deadbolt Adapter Plate
6. 2" Machine Screws (2) for 1-3/4" thick doors. 2-1/4" Machine Screws (2) for 2" thick doors.
7. Thumbturn Assembly
8. 5/8" Thumbturn Machine Screws (2)
9. Dustbox for Deadbolt
10. Door Frame Reinforcer
11. 3" Reinforcer Wood Screws (2)
12. Strike Plate for Deadbolt
13. Handleset Latch
 - 13A. Latch Tongue
14. Latch Faceplate
15. Handleset Spindle
16. Sectional Exterior Handleset
17. Rosette/Short Plate
18. 1-3/4" Machine Mounting Screws
19. Knob
20. Screw Cover Adapter
21. 2-1/2" Bottom Grip Mounting Screw for 1-3/4" thick doors. 2-3/4" for 2" thick doors.
22. Mounting Screw Cover
23. Dustbox for Handleset
24. Strike Plate for Handleset



1. Push plastic template's large circles (A) into existing bore holes of door.

2. Use position of bottom hole (B) to mark and drill 1/4 inch bottom grip mounting hole.

Grandeur Door Hardware Installation Instructions

LONG PLATE SECTIONAL TRIM

Single Cylinder Handleset

Note: Handlesets fit doors 1-3/4" to 2" thick.

A

USE INCLUDED DOOR PREPARATION TEMPLATE FOR NON-PREPARED DOORS.

USE INCLUDED PLASTIC TEMPLATE TO LOCATE AND DRILL THE 1/4" BOTTOM HOLE.

B

Install Deadbolt and Handleset Latches.

C

Latch Tongue Note

Bevel side of latch tongue should contact curved end of face plate, and curved end of strike plate.

D

Deadbolt Latch Tongue Note

E

Install Cylinder and Escutcheon.

F

Insert Cylinder Assembly into Escutcheon, and place on door exterior. Attach deadbolt adaptor plate with provided screws.

G

Attach Thumbturn Assembly with provided screws.

H

Install Exterior Handleset on Door Exterior. (part #16) Use included plastic template to drill the bottom hole.

I

Install Long Plate with Knob on Door Inside.

J

Install Jamb Strike Plate.

Exploded Drawing Single Cylinder Handleset Long Plate Sectional Trim

**Part
Number** **Part
Description**

1. Deadbolt Latch
- 1A. Latch Tongue
2. 3/4" Latch & Strike Wood Screws (8)
3. Cylinder Assembly (W/Keys)
- 3A. Cylinder Body
- 3B. Tailpiece
- 3C. Spin Ring
4. Escutcheon
5. Deadbolt Adapter Plate
6. 2" Machine Screws (2)
7. Thumbturn Assembly
8. 5/8" Thumbturn Machine Screws (2)
9. Dustbox for Deadbolt
10. Door Frame Reinforcer
11. 3" Reinforcer Wood Screws (2)
12. Strike Plate for Deadbolt
13. Handleset Latch
- 13A. Latch Tongue
14. Latch Faceplate
15. Handleset Spindle
16. Handleset
17. Adapter Plate
18. Adapter Plate Screws (2)
19. Long Plate
20. 1" Plate Mounting Screws
21. Knob
22. Screw Cover Adapter
23. 2-1/2" Lower Mounting Screw
24. Mounting Screw Cover
25. Dustbox for Handleset
26. Strike Plate for Handleset

