

Note: Handlesets fit doors 1-3/4" to 2" thick.

A USE INCLUDED DOOR PREPARATION TEMPLATE FOR NON-PREPARED DOORS.

Depth of edge bore holes: 2 3/8", 3 7/8"
1" Diameter
Mortise for Faceplate
Edge bore holes (Backset size See Step C)
1/4" (Tall Plate Mounting Holes)
1/4" (Bottom Grip Mounting Hole)
1/4" (Cross Bore Holes)
1 1/2" (Edge Bore Holes)
Center Line

USE INCLUDED PLASTIC TEMPLATE TO LOCATE AND DRILL THE TWO TALL PLATE 1/4" MOUNTING HOLES, AND THE 1/4" BOTTOM GRIP MOUNTING HOLE. (See note on reverse side.)

B Install deadbolt and handleset latches.

Deadbolt Latch (Part #1)
Deadbolt Tongue (Part #1A)
Deadbolt Faceplate (Part #14)
3/4" Latch & Strike Wood Screws (Part #2)
Edge Bore Holes
Post Holes
Handleset Latch (Part #13)
Latch Tongue (Part #13A)
3/4" Latch & Strike Wood Screws (Part #2)
Latch Faceplate (Part #14)
Door-Inside

(See D Below Before Deadbolt Latch Installation.)
(See Latch Tongue Note in Panel C)

C Latch Tongue Note

Bevel side of latch tongue should contact curved end of face plate, and curved end of strike plate.

Bevel Side
Face Plate Curve
Strike Plate Curve

D Deadbolt Latch Tongue Note

Door Inside

Deadbolt Tongue must be EXTENDED during installation.

E Install screw extenders into exterior plate.

Screw Extenders (part #8)
Tighten securely.

F Install cylinder into exterior plate.

Cylinder Assembly (part #3)
Tailpiece must be VERTICAL during installation.

G Insert cylinder into exterior plate, and place exterior plate on door outside. Attach deadbolt adaptor plate with provided screws.

Door Inside

Deadbolt Adaptor Plate (part #5)
2" Machine Screws (part #6)
Cylinder (part #3)

DO NOT FULLY TIGHTEN THESE SCREWS.

H Insert bottom grip mounting screw.

DO NOT FULLY TIGHTEN THIS SCREW.

Wait to install the mounting screw cover until you have completed step K.

Mounting Screw Cover (part #22)
Screw Cover Adapter (part #20)
Bottom Grip Mounting Screw (part #21)

Door-Outside

I Install adapter plate.

DO NOT FULLY TIGHTEN THESE SCREWS.

Adapter Plate (part #17)
1-1/2" Adapter Plate Machine Screws (part #18)

Door-Inside

J Slide handleset up, hold, and tighten deadbolt screws.

Tighten adapter plate screws.

Door-Outside

K Check operation by pressing the thumbpiece down.

Thumb-piece

Tighten bottom grip mounting screw and check operation again.

Install bottom mounting screw cover.

Door-Outside

L Attach tall plate with included screws.

Door-Inside

Check deadbolt operation by turning thumbturn and key.

Check knob/lever operation. Latch tongue should retract and extend smoothly.

M Install jamb strike plate.

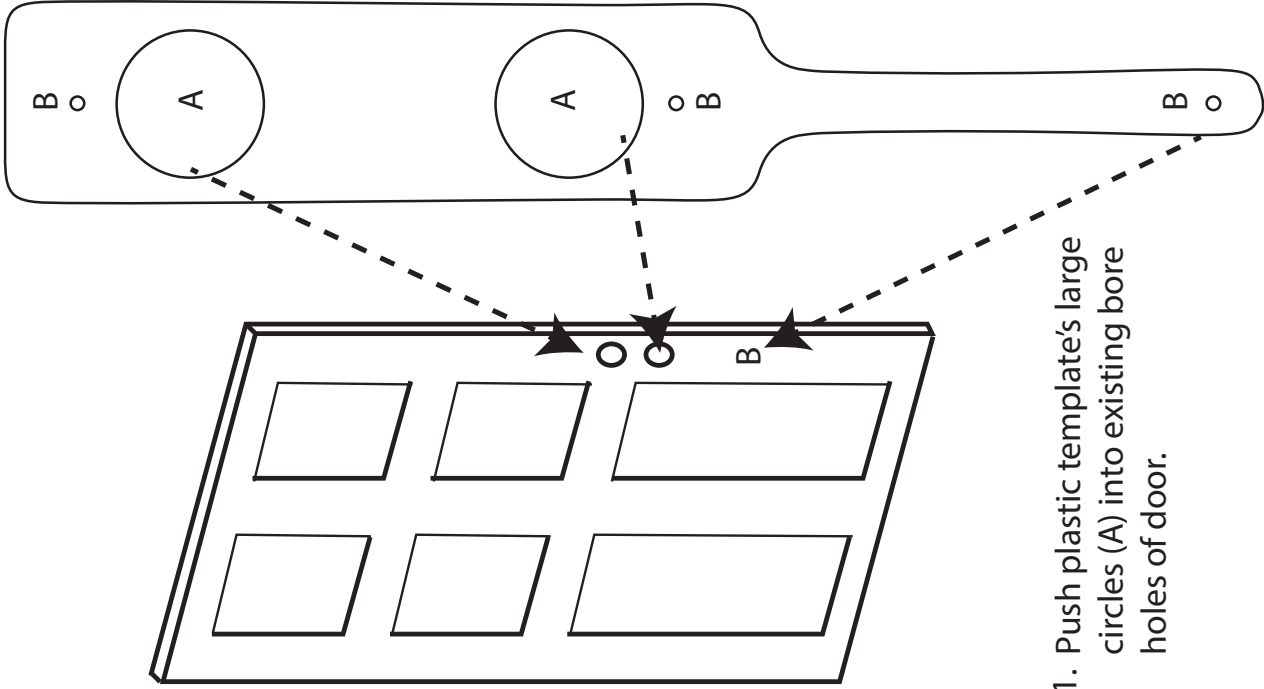
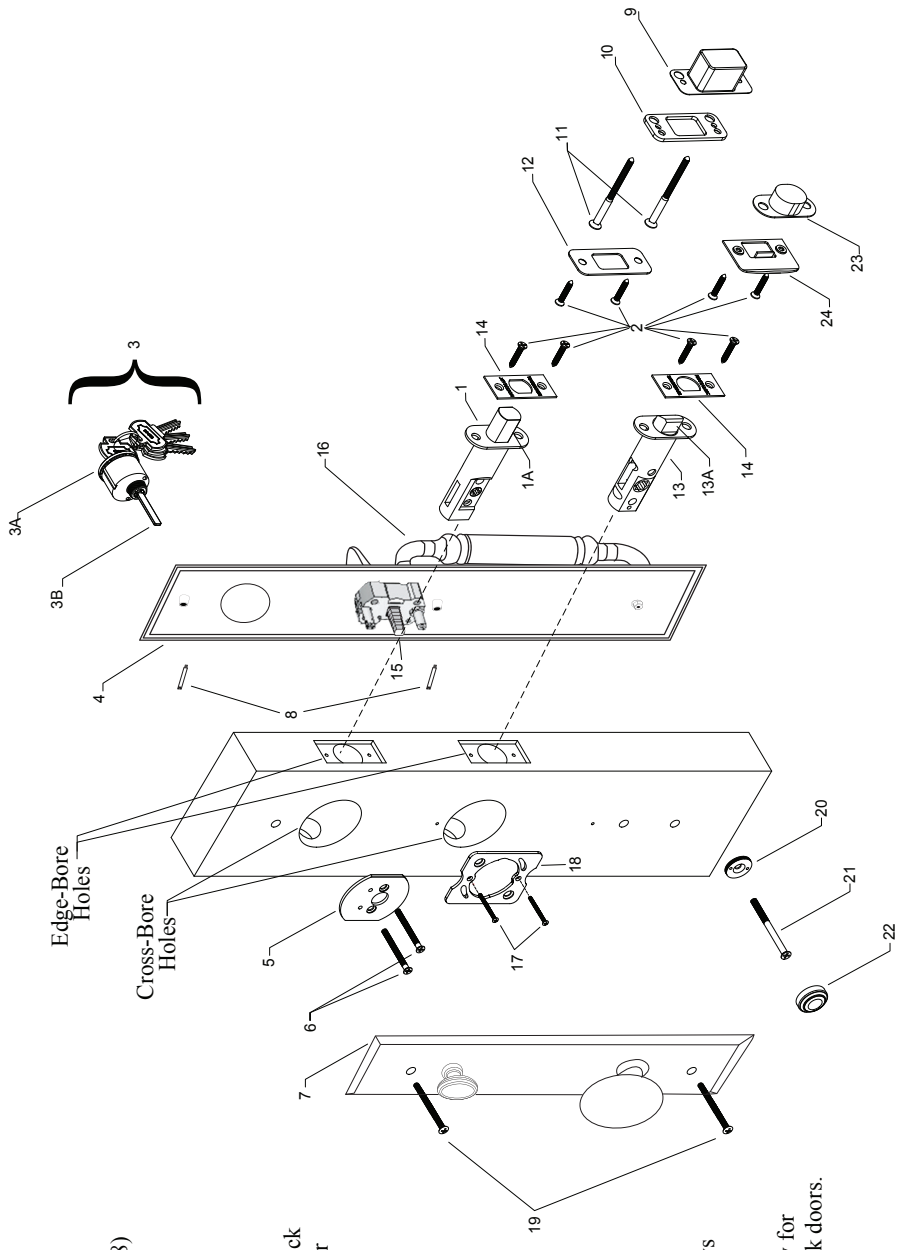
Door Jamb

Dust Box (Part #9)
Door Frame Reinforcer (Part #10)
Strike Plate (Part #12)
3" Wood Screws (Part #11)
3/4" Latch & Strike Wood Screw (Part #2)

Exploded Drawing Single Cylinder Handset– Tall Plate with One-Piece Exterior Plate

**Part
Number** **Part
Description**

1. Deadbolt Latch
- 1A. Latch Tongue
2. 3/4" Faceplate & Strike Wood Screws (8)
3. Cylinder Assembly (W/Keys)
 - 3A. Cylinder Body
 - 3B. Tailpiece
4. One-Piece Exterior Plate
5. Deadbolt Adapter Plate
6. 2" Machine Screws (2) for 1-3/4" thick doors. 2-1/4" Machine Screws (2) for 2" thick doors.
7. Tall Plate
8. Screw Extenders
9. Dustbox for Deadbolt
10. Door Frame Reinforcer
11. 3" Reinforcer Wood Screws (2)
12. Strike Plate for Deadbolt
13. Handset Latch
 - 13A. Latch Tongue
14. Latch Faceplate
15. Handset Spindle
16. One-Piece Handset
17. Adapter Plate
18. 1-1/2" Adapter Plate Machine Screws
19. 1-3/4" Machine Mounting Screws
20. Screw Cover Adapter
21. 2-1/2" Bottom Grip Mounting Screw for 1-3/4" thick doors. 2-3/4" for 2" thick doors.
22. Mounting Screw Cover
23. Dustbox for Handset
24. Strike Plate for Handset



1. Push plastic template's large circles (A) into existing bore holes of door.
2. Use position of small holes (B) to mark and drill 1/4" holes through the door.